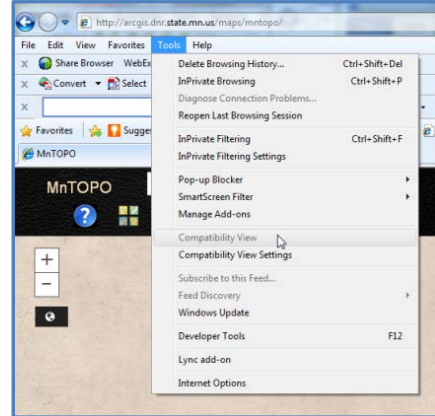
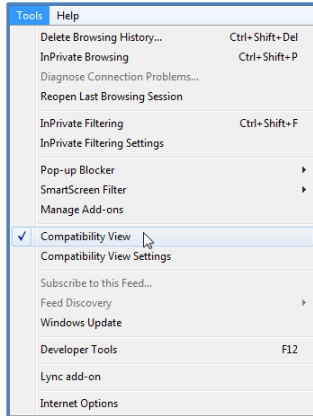
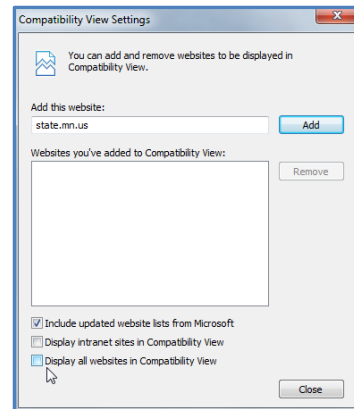
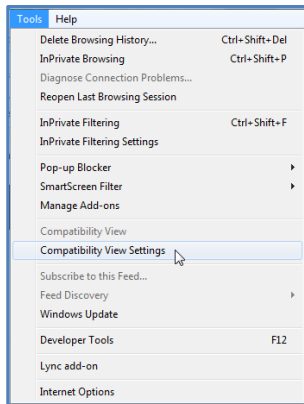


**Steps:**

Check your **Compatibility View** settings. Turn off/uncheck **Compatibility View**.



If **Compatibility View** is grayed out, select **Compatibility View Settings**. Ensure **Display intranet sites in Compatibility View** and **Display all websites in Compatibility View** are off/unselected.



MnTOPO should begin to complete its loading in the browser immediately after these changes are made.

