



# Minnesota Geospatial Advisory Council

March 20, 2024

# Introductions

- **City, Twin Cities metro**
  - Dennis Tumberg, City of Chanhassen
- **City, Greater Minnesota**
  - Vacant
- **County, Twin Cities metro**
  - Victoria Reinhardt, Ramsey County
- **County, Greater Minnesota**
  - Christy Christensen, McLeod County
- **Regional government, Twin Cities metro**
  - Tanya Mayer, Met Council
- **Regional government, Greater Minnesota**
  - Jill Amundson, West Central Initiative
- **State agencies**
  - Kari Geurts, DNR
  - Ben Timerson, MnDOT
- **Federal government**
  - Jeff Bloomquist, Risk Management Agency, USDA
  - Mitch Bergeson, US Geological Survey
- **Tribal government**
  - Ryan Bonney, Shakopee Mdewakanton Sioux Community
- **Non-profit organizations**
  - Jessica Fendos, LOGIS
- **Business**
  - Kendis Scharenbroich, Pro-West & Associates
  - Gerry Sjerven, Minnesota Power
- **Higher Education**
  - Len Kne, U-Spatial / UMN Twin Cities
  - Stacey Stark, U-Spatial / UMN Duluth
  - Shana Crosson, U-Spatial, Research Computing, UMN Twin Cities
- **MetroGIS**
  - David Brandt, Washington County
- **MN GIS/LIS Consortium**
  - Leanne Knott, City of Red Wing
- **Surveyor**
  - Pat Veraguth, Douglas County
- **At-large**
  - Cory Richter, Ramsey County
  - Heather Albrecht, Hennepin County
  - Britta Maddox, Anoka County
- **Chief Geospatial Information Officer (ex-officio)**
  - Alison Slaats, MnGeo

# Agenda

Time	Topic	Time	Topic
10:00	Call to order, introductions, approve agenda and previous minutes	11:10	Initiatives in Minnesota related to United Nations Sustainable Development Goals (SDG) (Kne/Amundson)
10:10	Review and Accept Committee Summaries / Year-End Reports (All)	11:20	PLSS Update (Veraguth/Thurnau)
10:25	GAC 2024 Workplan and 2023 Accomplishments (Albrecht)	11:25	MnGeo Updates (Wakefield [for Slaats])
10:25	Review and Approve Outreach Committee Charter (Albrecht [for Bontrager])	11:30	MN GAC Priority projects and initiatives (Maddox)
10:30	K12 Workgroup formation and recruitment (Crosson/Larsen)	11:50	Announcements or Other Business (All)
10:40	Priority Project Wrap Up (Maddox)	12:00	Adjourn
11:00	Break and Networking		

# Agenda Item 1

- **Introductions**
- **Approve agenda**
- **Approve last meeting minutes  
(December 20, 2023)**





## **Committee/Workgroup Reports – Review and Accept All**



# Agenda Item 2 con't

## Committees

- 3D Geomatics
- Awards
- Emergency Preparedness
- Outreach
- Parcels and Land Records
- PLSS Preservation
- Standards

## Workgroups

- Contributing to Nationwide and Commercial Assets (Can Do)



## **GAC and Committee year end reporting/project plans for 2024**

All



# Agenda Item 4

**Review and Approve revised  
Outreach Committee Charter  
Albrecht (for Bontrager)**





## **K12 Workgroup formation and recruitment** Crosson/Larsen



# Proposal: GAC Committee on GIS in Minnesota K-12 Education

March 20, 2024

Shana Crosson, University of Minnesota

Terry Larson, Esri

## Proposal:

- Create a working group in GAC to promote connections between GIS professionals and the K12 community

# Why is this important?

## For Students:

- Students see geospatial as a career opportunity
- Students see spatial thinking as a way to analyze problems and create solutions
- Increase spatial thinking in all disciplines
- Focus on critical thinking, not on tools

## For the geospatial profession

- Increase the number of students entering the field
- Increase the diversity of students entering the field
- Create students with exposure to the field before entering undergrad education
- Create a larger pool of individuals available to work with students and teachers



## Opportunities

New Minnesota Social Studies Standards:

**Geospatial Skills and Inquiry: Apply geographic tools, including geospatial technologies and geographic inquiry to solve spatial problems.**

## Current Status

- Esri: School Bundle and materials in approximately 300 schools
- Minnesota on the Map Competition:
  - Minnesota submits the most! Has has several national winners
- GIS/LIS: Educator Day for about 10 years
- MAGE: GeoFest
- Various sessions in schools
- Various other grant funded workshops
- [mngiseducation.org](http://mngiseducation.org)
  - Resources
  - Interactive Lessons
- Minnesota Ag in the Classroom
- Geomentors

## Current Partners



# Teachers

We have some amazing teachers in Minnesota using GIS in the classroom. Here are just a few:

- [Matt Winbigler](#), Cloquet High School
- Cynthia Welsh, Cloquet High School
- Mollie Bousu, Burnsville High School
- Brianna Wegter, Sauk Rapids Rice High School
- Stephanie McCleery, St. Paul Central High School
- Emily Yang, St. Paul Harding High School
- Brittany Wedlund & Alyssa Larsen, Big Lake Schools
- Laurie Bohm, Bloomington Schools
- Jess Winkelaar, Moundview Public Schools
- Tami Brass, St Paul Academy
- Sara Damon, Retired
- Jim Hanson, Retired



MAGE

- GeoFest
- Minnesota on the Map Competition
- Grants and Workshops
- Curriculum Support
- Networking
- Connections to NatGeo



## GIS/LIS

- Educator Day
- Educator Grant Program
- Conferencing
- MN /GIS financial and logistical support
- Educator Awards
- Geomentors



UMN Support  
through U-Spatial,  
Borchert Map  
Library and  
Geography Dept



- Borchert Map Library Fellowship
- Geography, Environment and Sustainability Department partnerships
- [2892 Miles to Go](#) - Place based Storytelling of underrepresented communities
- Tribal Youth in GIS with the Indian Land Tenure Foundation
- GeoInquiry Development
- Collaborate with UMN Faculty to make research accessible to the K12 audience as appropriate
- NRRI Collaboration
- Data and Maps for teachers upon request
- Technical support for Esri Org management

## GeoFest

- October 5, 2024
- Hosted by
  - [Minnesota Alliance for Geographic Education](#),
  - UMN (Geography Department, U-Spatial, Borchert Map Library),
  - GIS/LIS
- Full track of GIS and digital map sessions



# Proposed Workgroup

- Shana Crosson, UMN, and Terry Larson, Esri will co-chair
- Anyone interested can join
- Committee will meet to determine mission and goals for the year

## Some ideas to get involved

- Volunteer to collaborate with a teacher
- Support GIS and spatial thinking in Minnesota's academic standards
- Provide paid internships to high school students
- Create and distribute open maps and data that are usable for K12 teachers
- Collaborate on workshops for teachers

Shana Crosson  
Spatial Technology Consultant, U-Spatial  
University of Minnesota  
[scrosson@umn.edu](mailto:scrosson@umn.edu)

## Priority Project Wrap Up Maddox

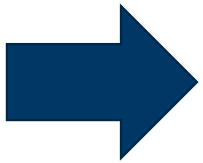


# Why Create Priorities?

1. To create a voice for the MN geospatial community
2. To direct work plans of the GAC and its committees
3. To advise MnGeo on needs of the community
4. To allow other organizations to compare priorities and align efforts
5. To inform outreach and policy related efforts
6. Having clear direction helps motivate people to participate

# GAC Priorities Process

- Create a list of proposed projects and initiatives
  - From GAC members and committee chairs
  - Outreach to sectors
- Assess the **value** of each – degree of business need
  - MN Geospatial Priorities Survey
- Assess **likelihood of success** of each - owner, work team, champion, funding
- Preliminary priority calculation
  - **GAC discusses and adjusts**
    - These are ranked under the GAC Priority numbered per committee workgroup each falls under, where applicable





Project or Initiative Name	Status	Do in	GAC Rank	Priority Score	Value Score	Survey Score	Success Score	Owner Exists	Work Team Exists	Active Champ Exists	\$\$ Exis	Est \$\$	Easy Scor	Effo	Priority Owner	Champ	Committee
Lidar Data	Active	1	1	204	20	2.04	10	3	2	2	2	some	1	High	Gerry Sjerven	Alison Slaats	3D Geomat
Updated & Aligned Boundary Data	Active	1	2	194	19	1.94	10	3	2	2	2	\$0	1	High	Preston Dowell	Alison Slaats	Parcel and Land Recor
Parcel Data	Active	1	1	183	18	1.83	10	3	2	2	2	\$0	1	High	Heather Albrecht	Alison Slaats	Outreach
Road Centerline Data	Active	1	2	174	17	1.74	10	3	2	2	2	\$0	1	High	Heather Albrecht	Alison Slaats	Outreach
Publication of Open Foundational Datasets	Active	1	1	157	14	1.43	11	3	2	2	2	N/A	2	Med	Dave Brandt	Randy Knippel	Can Do
Address Points Data	Active	1	3	152	15	1.52	10	3	2	2	2	\$0	1	High	Heather Albrecht	Alison Slaats	Outreach
Statewide County Boundary Dataset	New	1	4	150	19	1.87	8	3		2	2	N/A	1	High	Ben Timerson	Alison Slaats	Parcel and Land Recor
Remonumentation of all Section Corners	Active	1	1	148	15	1.48	10	3	2	2	2	some	1	High	Pat Veraguth	Alison Slaats	Parcel and Land Recor
Underground Utilities Data Sharing Team	Active	1	1	136	12	1.24	11	3	2	2	2	sig.	2	Med	Steve Swazee	Barb Cederberg	EPC
MnGeo Image Service Improvements	Recruiting	1	1	136	14	1.36	10	3	2	2	2	\$0	1	High	Alison Slaats	Alison Slaats	Image Servi Sustainabili
Hydro-DEMs	Active	1	2	133	17	1.66	8	3	2	2		some	1	High	Sean Vaughn	Many	3D Geomat
Culvert Data Standard	Active	1	3	130	12	1.18	11	3	2	2	2	\$0	2	High	Rick Moore	Andrea Bergman	3D Geomat
Statewide Survey Records Inventory	New	1	3	126	14	1.4	9	3		2	2	some	2	Med	Pat Veraguth	Alison Slaats	Parcel and Land Recor
Statewide Imagery Program	Recruiting	1	2	113	19	1.88	6	3		2		LOTS	1	High	Jennifer Corcoran & Christy Christensen	Alison Slaats	Image Servi Sustainabili
More fully attributed statewide parcel data	New	1	5	110	14	1.38	8	3		2	2	none required	1	High	Stacey Stark	Alison Slaats	Parcel and Land Recor
Critical Infrastructure Data Workflow	Active	1	2	108	11	1.08	10	3	2	2	2	\$0	1	High	Stacey Stark	Swazee	EPC
Success Stories for Geospatial Technology	Active	1	4	105	10	0.95	11	3	2	2	2	\$0	2	Med	Len Kne	Len Kne	Outreach
K-12 GIS Resources Group	Recruitment underway	1		95	9	0.86	11	3	2	2	2	none required	2	Med	Shana Crosson	Many - Len Kne	
Geospatial Commons Advisory Group	Pending	1	1	94	13	1.34	7			2	2	pending	3	Low		Alison Slaats	Commons
Geodata Archive Implementation	Active	1	1	90	10	1	9	3	2	2	1	some	1	High	Ryan Mattke	many	New WG
U.S. National Grid Materials	Active	1	3	79	7	0.72	11	3	2	2	2	?	2	Med	Randy Knippel	Knippel	EPC
State-hosted GIS Servers with Feature Services	Pending	1	2	78	16	1.56	5		2	2		?	1	High		Alison Slaats	Commons
Planned Land Use Data Standard	Recruiting	1	1	51	10	1.01	5	3		2		?			Todd Graham	MetCouncil	Standards
NG9-1-1 Geospatial Forum	Removed	1		32	8	0.79	4				2	\$0	2	Med	Statewide Emergency Communications Board (S		
State wide Future Planned Land Use	Tabled until Planned Land Use Data Standard Complete	1		20	10	1.01	2			2		?				MetCouncil	

# Discussion of Motion to Retire Priorities

	Project or Initiative Name	Status	Rank	Score	Score	Score	Score	Exists	Exists	Exists	\$\$ Exis	Est \$\$	Scor	Effo	Priority Owner	Champ
27	Potential Retired Priorities?															
28	State Business License Data	Inactive, Potentially Retire?		15	7	0.73	2					?	2	Med		
29	Inventory of MN GeoData Assets	Inactive, Potentially Retire?		14	14	1.39	1					?	1	High		
30	Summary Crime Data	Inactive, Potentially Retire?		13	7	0.65	2					?	2	Med		
31	Snow Emergency Parking Data Practices	Inactive, Potentially Retire?	3	12	6	0.62	2					?	2	Med		
32	Street Parking Restrictions Data Standard	Inactive, Potentially Retire?	4	11	6	0.56	2					?	2	Med		
33	Recreational Trails Data Standard	Inactive, Potentially Retire?	5	0	10	1.04	0					?				
34	Fire Hydrant Data Standard	Inactive, Potentially Retire?	6	0	8	0.76	0					?				
35	Basemap Services	Inactive, Potentially Retire?	2	46	15	1.54	3		2			some	1	High		
36	Parks Data Standard	Inactive, Potentially Retire?	2	2	39	10	0.98	4			2	\$0	2	Med		
37	Strategy Team for All Types of Imagery	Inactive, Potentially Retire?	2	27	14	1.35	2					\$0	2	Med		

- Some priorities have been carried through from past surveys for many years and haven't gained traction nor have they reached a high level of desire from the broader community
  - Also lacking owners and champions, therefore scoring lower on overall GAC rank
- “Retiring” would mean they do not get sent with the next prioritization survey (unless they are actively resubmitted by members of the community, at which point they would be evaluated against that year’s prioritization list as with any new submission)
- The information obtained from previous submissions may be retained so these could be resurrected should a particular committee or workgroup have bandwidth to address them

# Motion to Retire Priorities

- Motion to retire these off of the priorities list so they are no longer carried forward for re-prioritization each year.
  1. State Business License Data
  2. Inventory of MN GeoData Assets
  3. Summary Crime Data
  4. Snow Emergency Parking Data Practices
  5. Street Parking Restrictions Data Standard
  6. Recreational Trails Data Standard
  7. Fire Hydrant Data Standard
  8. Parks Data Standard
  9. Strategy Team for All Types of Imagery
  10. Basemap Services

# Motion to Accept Priorities for 2024

- Motion to accept the GAC Priorities for 2024 as listed in the packet.



Break & Networking



## Initiatives in Minnesota related to United Nations Sustainable Development Goals (SDG) Kne/Amundson





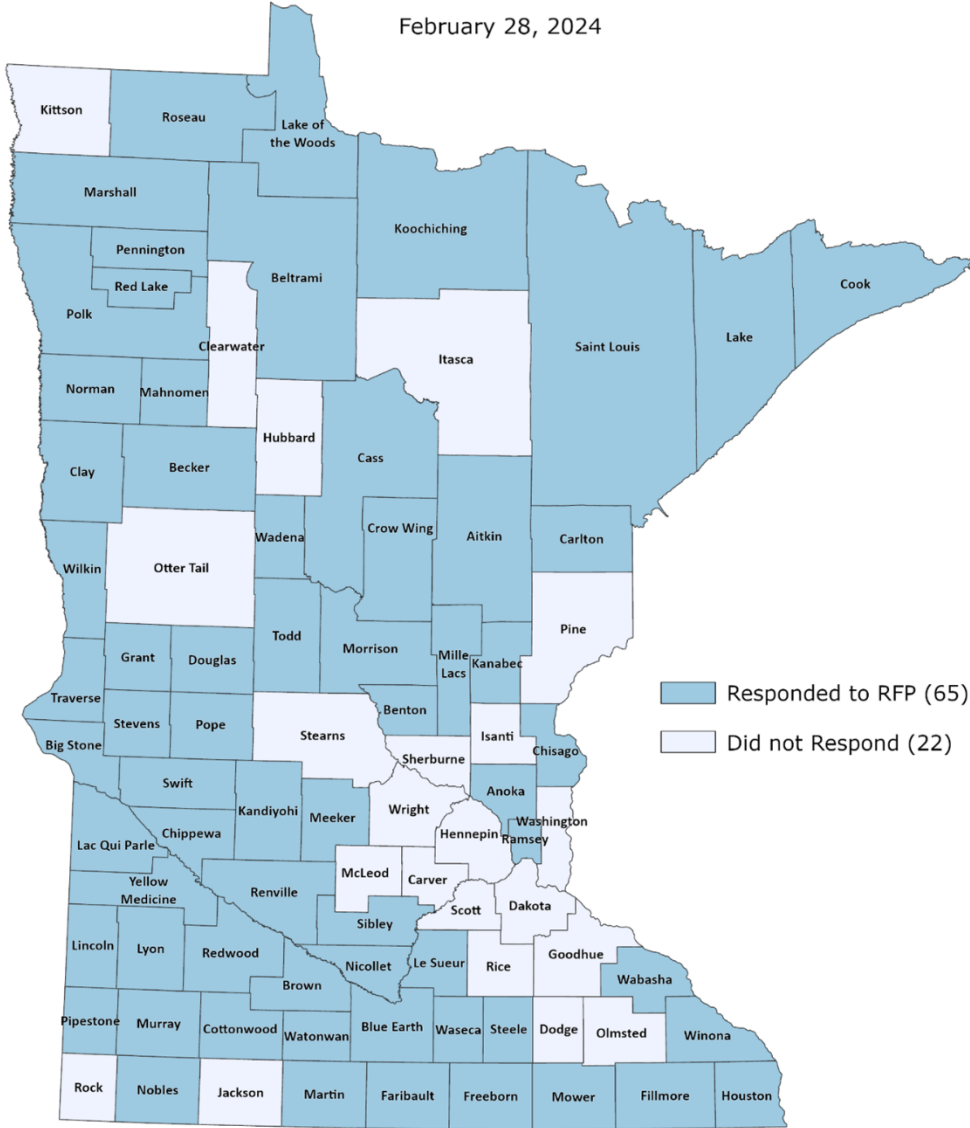
# Agenda Item 9

## PLSS Update Thurnau/Veraguth



# Counties Responding to the Spring 2024 RFP

February 28, 2024



# Letter of Intent (LOI) Statistics

65 Counties have responded to the Spring Request for Proposal and initiated 70 applications for funding.

	Funding To Be Requested	PLSS Corners To Be Addressed	Survey Records To Be Addressed
<b>Totals =</b>	\$16,168,454.00	13,503	57,332
<b>Averages =</b>	\$230,978.00	193	819

How many years and how much annually would you need to complete remonumentation in your county?

	Years to Complete Remonumentation	Annual Funding Needed to Remonument
<b>Totals =</b>	Min.= 0 Max.=100	\$13.5 million
<b>Averages =</b>	20	\$210,000.00

# Key Dates & Next Steps

- Applications due no later than 4:59 pm central time April 5, 2024

The PLSS Preservation Committee will evaluate all eligible and complete applications received by the deadline

The PLSS Preservation Committee, using award criteria, will advise MnGeo how to award the available \$9.1 million

- Selected grantees announced April 30, 2024
- Work plans approved and grants begin May 2024

# 2024: Late Start/Short Session



February 12<sup>th</sup> Start  
Date



43 Legislative Days



May 20<sup>th</sup> Adjournment



The state constitution limits the Legislature to meeting 120 legislative days during each biennium. In addition, the Legislature may not meet in regular session after the first Monday following the third Saturday in May of any year.

[This Photo](#) by Unknown Author is licensed under [CC BY-NC](#)

February  
Forecast  
Woes

## Long Term Budget Outlook

(\$ in millions)	<u>FY 2024-25</u>	<u>FY 2026-27</u>
<b>Beginning Balance</b>	<b>\$16,516</b>	<b>\$6,978</b>
Forecast Revenues	60,997	64,814
Projected Spending*	70,535	66,292
Reserve & Cash Flow	3,263	3,263
<b>Remaining Balance</b>	<b>\$3,715</b>	<b>\$2,237</b>
<i>Structural Balance</i>		<i>\$(1,478)</i>





Retrieve by number  Bills

# 2024 MSPS Bill Status

## SF 4189 Status in the Senate for the 93rd Legislature (2023 - 2024)

<a href="#">Current bill text: As Introduced</a>	<a href="#">Companion: HF3552</a>	<a href="#">Revisor number: 2</a>
<a href="#">Add SF 4189 to MyBills</a>	<a href="#">Companion Text</a>	<a href="#">Senate Counsel</a>
<a href="#">Version List</a>	<a href="#">House Search</a>	<a href="#">Fiscal Notes</a>
<a href="#">Long Description</a>	<a href="#">Committee Hearings and Actions</a>	

- Introduced in House and Senate
- Makes funding permanent at \$10M per year
- Locks in grant criteria
- May add Tribes to eligibility for grants
- Committee officials seem very negative on new hearings
- May entice Senate into friendly hearing
- Budget numbers must change

### Description

Prioritization criteria for the public land survey system monument grant program modification and appropriation

### Authors (2)

[Carlson](#); [Jasinski](#)

### Actions

### Senate

02/26/2024	Introduction and first reading	<a href="#">Intro</a>
02/26/2024	Referred to <a href="#">State and Local Government and Veterans</a>	



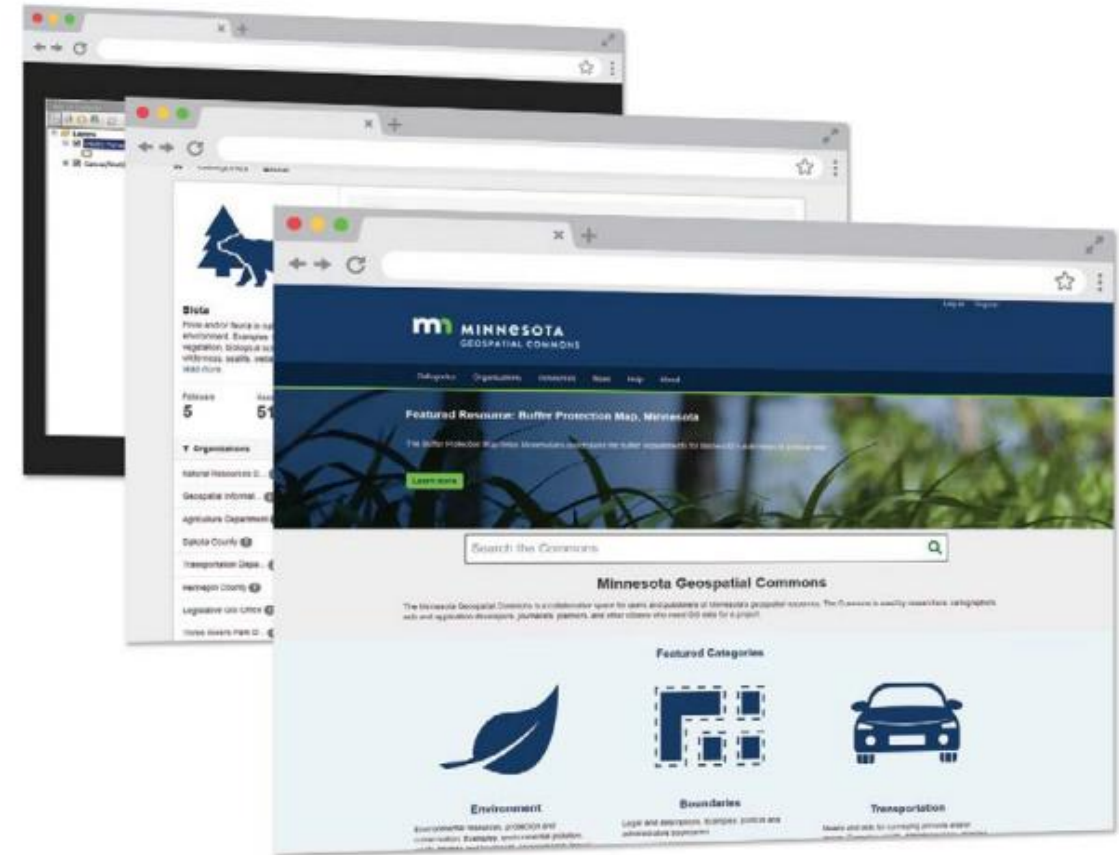
# Agenda Item 10

## MnGeo Updates Wakefield (for Slaats)



# Funding for Modernization of the Geospatial Commons

- MnGeo applied for, and received funds from the [MNIT Technology Modernization Fund](#)
- The Minnesota Geospatial Commons (“The Commons”) technology is aging, and nearing 10 years old
- TMF funding will enable **modernization** of Commons technology from a **file-based system to a web service model** and **improve user and publisher experience**



# Challenges and Opportunities

- ***Provide easier access*** to datasets through services
- Provide ***easier participation and maintenance for publishers***
- When the Commons is better, ***state agencies, cities, counties and all partners can do their work better***
- Enable a geographic approach ***to improve decision making and outcomes***



## Next steps – your input requested

Input from Commons publishers and users to further define and refine needs and outcomes

- Survey
- Virtual meetings

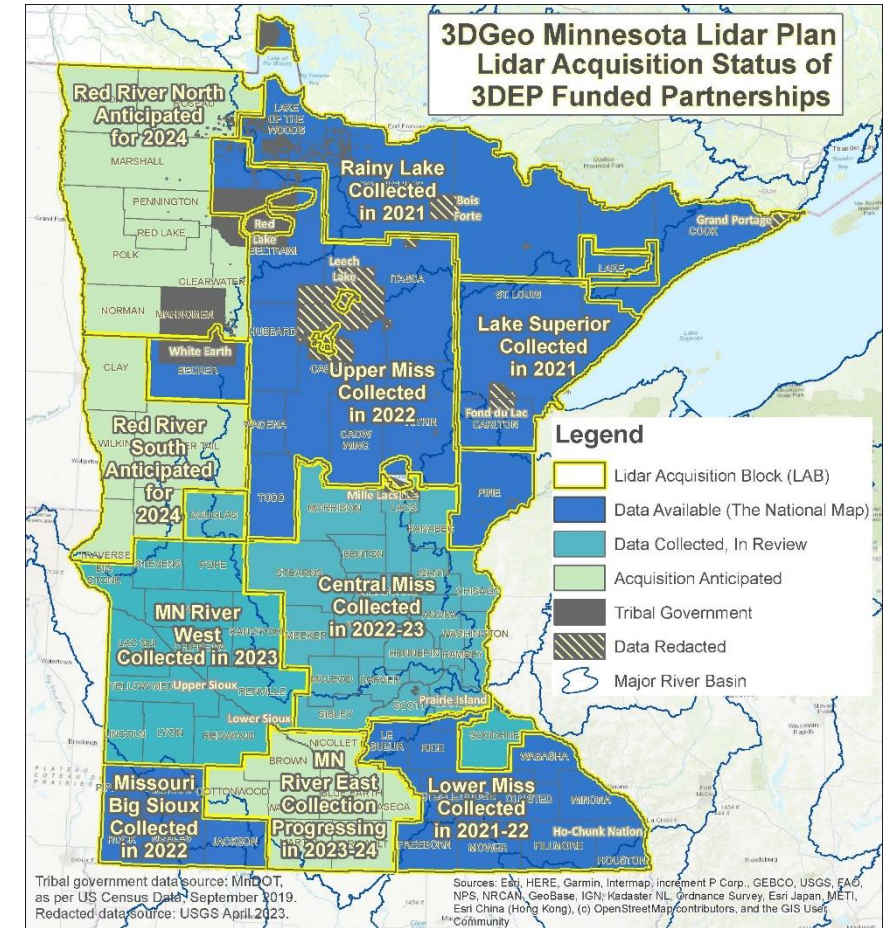
Please share your ideas!





# Lidar data distribution and derivatives

- MnGeo, in partnership with the GAC 3DGeo committee, is building **MnTOPO 2** to share MN lidar data and derivatives.
- The 3DGeo team is working on derivative creation methodologies and products
- These efforts have been delayed to due cloud migration, but they progressing
- In short term, lidar data, such as NE data, is available on the [USGS National Map](#)



Some collections that began in 2023 are anticipated to be completed in spring 2024.

0 25 50 100 Mi Map Date: Sept 22, 2023

# Agenda Item 11

## **MN GAC priority projects and initiatives updates** Maddox





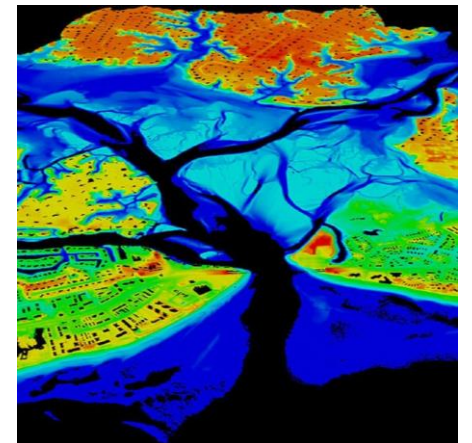
# GAC Priorities

Project or Initiative Description	Status	Project Owner	Champion	Committee/ Workgroup
Lidar Data	Active	Gerry Sjerven	Alison Slaats	3D Geomatics
Updated and Aligned Boundary Data	Active	Preston Dowell	Alison Slaats	PLRC/Boundary Alignment
Parcel Data	Active	Heather Albrecht	Alison Slaats	Outreach/Open Data
Road Centerline Data	Active	Heather Albrecht	Alison Slaats	Outreach/Open Data
Publication of Open Foundational Data	Active	Dave Brandt	Randy Knippel	CAN DO
Address Points Data	Active	Heather Albrecht	Alison Slaats	Outreach/Open Data
Remonumentation of All Section Corners	Active	Pat Veraguth	Alison Slaats	PLSS Preservation
Underground Utilities Data Sharing Team	Active	Steve Swazee	Barb Cederberg	Emergency Preparedness
Hydro-DEMs	Active	Sean Vaughn	many	3D Geomatics
Culvert Data Standard	Active	Rick Moore	Andrea Bergman	3D Geomatics

# GAC Priorities

Project or Initiative Description	Status	Project Owner	Champion	Committee/ Workgroup
Critical Infrastructure Data Workflow	Active	Stacey Stark	Steve Swazee	Emergency Preparedness
Success Stories for Geospatial Technology	Active	Len Kne	Len Kne	Outreach/Success stories
Geodata Archive Implementation	Active	Ryan Mattke	many	
US National Grid Materials	Active	Randy Knippel	Steve Swazee	Emergency Preparedness
Statewide Imagery Program	New	Jennifer Corcoran & Christy Christensen	Alison Slaats	
Planned Land Use Data Standard	New	Todd Graham	Met Council	
Statewide County Boundary Dataset	New	Ben Timerson	Alison Slaats	
Statewide Survey Records Inventory	New	Pat Veraguth	Alison Slaats	
More fully attributed statewide parcel data	New	Stacey Stark	Alison Slaats	
K-12 GIS Resources	New	Shana Crosson	Many – Len Kne	

- **Goals for 2024:**
- **Most recent success:**
- **Experiencing a barrier:**
- **Next Task:**
- **Request for assistance:**



# Updated and Aligned Boundary Data

- **Goals for 2024:**

- Document example county boundary alignment workflow along PLSS County Boundaries
- Develop county boundary alignment workflow along rivers
- Finalize PLSS Point Standard and forward to Standards Committee

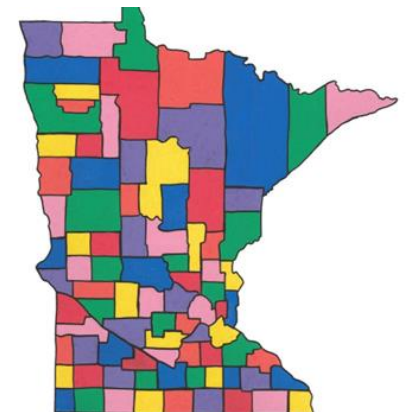
- **Most recent success:**

- Developed proposed PLSS Point Standard and integrated it into the PLSS Monument Grant Program.
- Presented PLSS Point Standard to MSPS and MACS and solicited feedback

- **Experiencing a barrier:** Volunteer time

- **Next Task:** Finalize PLSS Point Standard and forward to Standards Committee

- **Request for assistance:**



- **Goals for 2024:** We are asking counties to opt-in to the composite datasets to be a partner in the process, to maintain healthy relationships between the community, the GAC, and MnGeo, and to be respectful of the effort and intentions for those who do the work of producing the data. Goal of each committee member to contact/add at least one new county to the opt-in dataset each 6-week meeting cycle.
- **Most recent success:** A total of **50** Minnesota Counties are contributing to the opt-in statewide composite dataset available on the MN Geospatial Commons
- **Experiencing a barrier:**
- **Next Task:** See 2024 goals
- **Request for assistance:**



# Road Centerline Data

- **Goals for 2024:** We are asking counties to opt-in to the composite datasets to be a partner in the process, to maintain healthy relationships between the community, the GAC, and MnGeo, and to be respectful of the effort and intentions for those who do the work of producing the data. Goal of each committee member to contact/add at least one new county to the opt-in dataset each 6-week meeting cycle.
- **Most recent success:** Road Centerlines (New in 2023) **31** Minnesota Counties have committed to contributing to the opt-in statewide composite dataset available on the MN Geospatial Commons
- **Experiencing a barrier:**
- **Next Task:** See 2024 goals
- **Request for assistance:**





# Address Points Data

- **Goals for 2024:** We are asking counties to opt-in to the composite datasets to be a partner in the process, to maintain healthy relationships between the community, the GAC, and MnGeo, and to be respectful of the effort and intentions for those who do the work of producing the data. Goal of each committee member to contact/add at least one new county to the opt-in dataset each 6-week meeting cycle.
- **Most recent success:** Address Points (New in 2023) **32** Minnesota Counties have committed to contributing to the opt-in statewide composite dataset available on the MN Geospatial Commons
- **Experiencing a barrier:**
- **Next Task:** See 2024 goals
- **Request for assistance:**



# Publication of Open Foundational Data (CAN DO)

- **Goals for 2024:**

- Raise awareness of the need for shared data
- Identify major consumers of shared data
- Identify, document and recommend requirements and processes for MnGeo to share aggregated statewide datasets compiled from local authoritative data
- Identify appropriate open licensing

- **Most recent success:**

- Met with Esri and Google to discuss sharing authoritative data.
- MnGeo currently working with Esri to provide authoritative data through Community Maps program
- MnGeo contacted the National Address Database (NAD) to request their use of the opt-in statewide address point data. This will be included in NAD's April data release.

- **Experiencing a barrier:** Not all data producers share their data freely and openly

- **Next Task:**

- Complete process for sharing data one dataset (road centerlines) with Esri to prove out process
- Continue work with Google
- Continue conversation with Gopher State One Call to suggest they use statewide data to reduce work for counties.

- **Request for assistance:** The Outreach Committee is currently assisting



# Remonumentation of All Section Corners

- **Goals for 2024:**
- **Most recent success:**
- **Experiencing a barrier:**
- **Next Task:**
- **Request for assistance:**

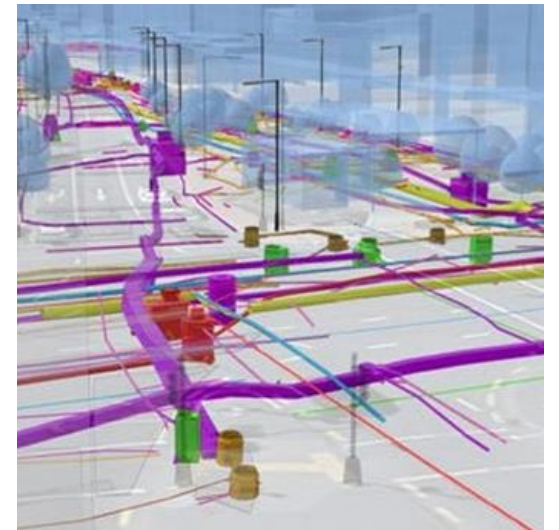
**(see PLSS Committee report)**



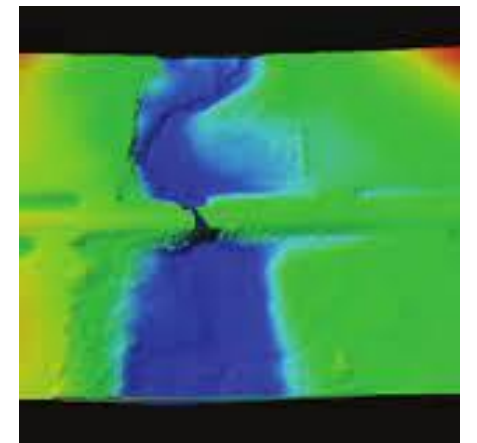
# Underground Utilities Data Sharing Team

- **Goals for 2024:**
- **Most recent success:**
- **Experiencing a barrier:**
- **Next Task:**
- **Request for assistance:**

**(see EPC Committee report)**



- **Goals for 2024:**
- **Most recent success:**
- **Experiencing a barrier:**
- **Next Task:**
- **Request for assistance:**



# Culvert Data Standard

- **Goals for 2024:**
  - Review Survey results from Culvert Stakeholders
  - Combine Attributes from Stakeholders and compare similarities and differences.
  - Standards Subgroup work to define core attributes and classify other attributes into group
- **Most recent success:** The Survey yielded about 44 responses across County and City entities along with responses from state agencies and tribal nations. This information will allow us to review a large subset of attributes for the standard.
- **Experiencing a barrier:** Barriers are normally the time needed to analyze the data along with completing other tasks required by members positions
- **Next Task:**
  - Combine Attributes from Stakeholders and compare similarities and differences.
  - Standards Subgroup work to define core attributes and classify other attributes into group
- **Request for assistance:** Our subgroup would welcome more responses to our survey. Our survey remains open and additional submissions will be welcome.  
<https://survey123.arcgis.com/share/e924af8c2f9b4949a0c2562b1eb5f3ca>





# Critical Infrastructure Data Workflow

- **Goals for 2024:**
  - Identify missing datasets or opportunities for data development for the Critical Infrastructure GIS Data resource webpage
  - Re-organize the GIS Data resource webpage, make data more visible
  - Consider a process for MnGeo endorsement of datasets
- **Most recent success:** New workgroup website
- **Experiencing a barrier:** Communication with HSEM
- **Next Task:**
  - Cleaning up C.I. Data resource webpage
  - Information sharing with HSEM
- **Request for assistance:**



# Success Stories for Geospatial Technology

- **Goals for 2024:** This initiative seeks to share the importance of all of the amazing work our geospatial colleagues perform everyday to stakeholders outside the geospatial community. This could include policy/decision makers at all levels, private sector, education, NGOs and the citizens of Minnesota and beyond. At the risk of oversimplifying the work, this is really a marketing exercise that will tell our stories to a wide and diverse audience.
- Specific questions for the workgroup to answer include:
  - What are the existing resources? There are many resources to build on
  - Who is the audience/stakeholders?
  - Why do this? What is our goal? What do we want to achieve?
  - How to get stories out?
  - Who will publish the stories

While this workgroup may create new content (e.g. StoryMaps, articles, presentations, etc.), the focus will be on cataloging existing resources and creating strategies to promote the work of the geospatial community to targeted audiences.

- **Most recent success:** Connecting with the MN GIS/LIS Member Showcase - <https://showcase-mngislis.hub.arcgis.com>
- **Experiencing a barrier:** None
- **Next Task:** Meeting with MnGeo to talk about how to tell the stories of the Success Stories
- **Request for assistance:** None

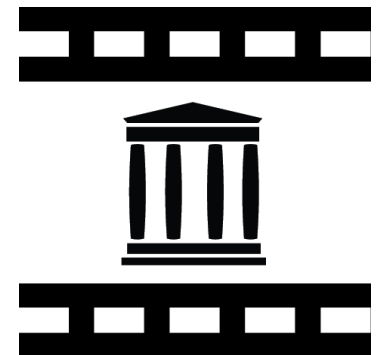


# Geodata Archive Implementation

- **Goals for 2024:** Within the Big Ten Geospatial Information Network, we have launched a Geodata Collection Pilot Working Group to create a sample set of geodata and develop preliminary recommendations for building a geodata collection.

This group will work to: identify sample datasets; research and test metadata schemas; explore workflow options; advise on determining new roles & responsibilities; establish a small set of pilot data to be used for ongoing application and workflow development; work with our software developer to ingest pilot data; and write report outlining a framework of preliminary recommendations.

- **Most recent success:** The Big Ten Geospatial Information Network has completed a report outlining what it would look like to build a Geodata Archive for the Big Ten. Much of the work of the Archiving Workgroup will be utilized for this exploration.
- **Experiencing a barrier:** The main barrier for this work over the past six or so years has been a lack of funding, but we're hoping to work around that by building the archive for the entire Big Ten Geospatial Information Network.
- **Next Task:** Determining costs and software options for different ways of implementing an archive. Based on our report, we have been given the green light to proceed. We hope to receive more formal approval in late May.
- **Request for assistance:** Not so much assistance as (future) input -- how can we leverage this to archive Minnesota data? Would a Big Ten Geodata Archive serve the need for a Minnesota Geodata Archive?



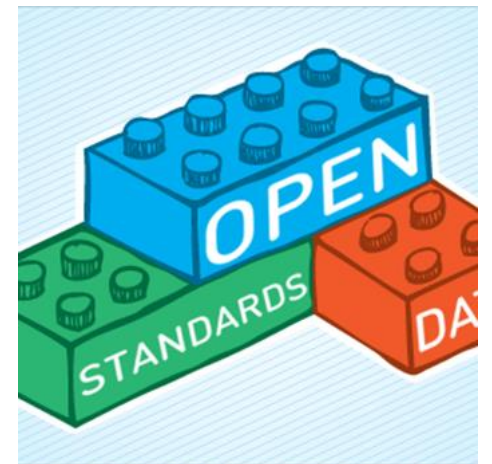
# Statewide Imagery Program (New)

- **Goals for 2024:** Write a needs assessment and recommendations document.
- **Most recent success:** Christy Christensen and Jennifer Corcoran have had several meetings, initiated discussions with stakeholders, and met with MnGeo staff (Alison Slaats and Sally Wakefield)
- **Experiencing a barrier:** Need to identify a Committee or Working Group to house under
- **Next Task:** Planning out the next steps and recruiting additional members to the effort.
- **Request for assistance:**



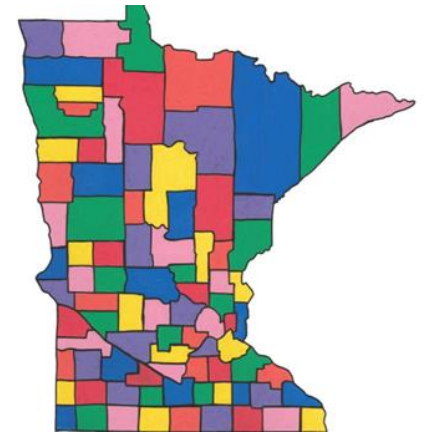
# Planned Land Use Data Standard (New)

- Owner – Todd Graham
- Update to share?



# Statewide County Boundary Dataset (New)

- **Owner – Ben Timerson**
- **Update to share?**





# Statewide Survey Records Inventory (New)

- **Owner – Pat Veraguth**
- **Update to share?**



# More Fully Attributed Statewide Parcel Data (New)

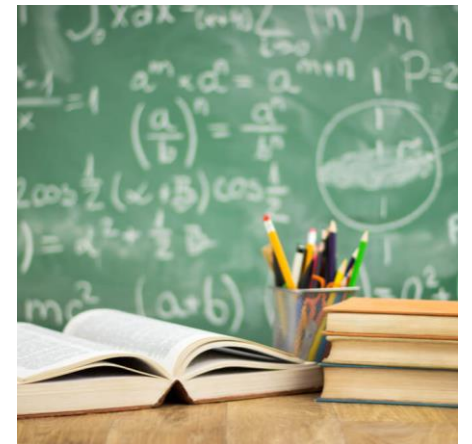
- **Owner – Stacey Stark**
- **Update to share?**



CRITICAL INFRASTRUCTURE

# K-12 GIS Resources (New)

- **Owner – Shana Crosson**
- **Update to share?**



# Agenda Item 12

**Announcements or Other Business**  
All



## Wednesday May 29, 2024

11 am – 2pm, hybrid (in person and on Teams)



Adjourn

**Thank you**

