



Minnesota Geospatial  
Information Office

*Improving services statewide through  
the coordinated, affordable, reliable  
and effective use of GIS*



[www.mngeo.state.mn.us](http://www.mngeo.state.mn.us)  
651-201-2499  
[mn.geo@state.mn.us](mailto:mn.geo@state.mn.us)

---

# MnGeo Statewide Geospatial Advisory Council

---

An Annotated Briefing  
for the Introductory  
Meeting

---

David Arbeit  
January 7, 2009

---

*This page intentionally blank*

## MnGeo Overview

### Background

Culminating more than two years of public meetings, a Drive to Excellence initiative that included a comprehensive analysis of the State's use and potential use of GIS technology, and with broad-based support from the state's GIS community, Governor Pawlenty signed into law legislation that created the Minnesota Geospatial Information Office. The legislation, reflecting recommendations made by the Governor's Council on Geographic Information, provided for two advisory councils to advise the new office – a State Government Geospatial Advisory Council to reflect the interests of state government and a Statewide Geospatial Advisory Council to represent the interests of the broader Minnesota GIS community.

### Applied Geographics Recommendations

Applied Geographics, based upon a comprehensive analysis of GIS within Minnesota that included significant stakeholder input and involvement, recommended the creation of the Minnesota Geospatial Information Office, headed by a Geospatial Information Officer. Applied Geographics recommended transforming and expanding on the foundation provided by the Land Management Information Center to coordinate and support GIS within the state and provide a broad range of services, clustered into eight distinct program areas.

#### **Geospatial Coordination**

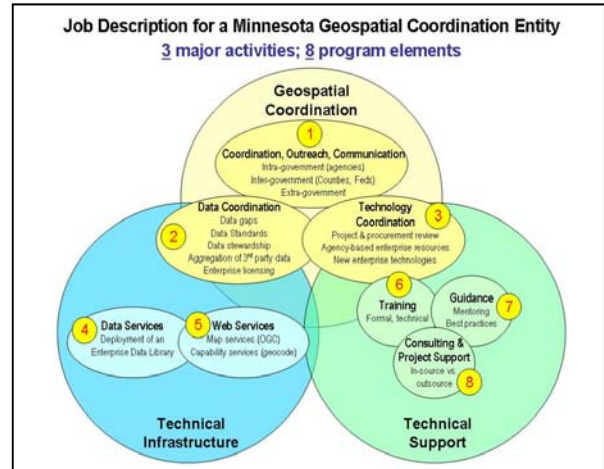
- (1) Leadership, Outreach & Communication
- (2) Data Coordination
- (3) Technology Coordination

#### **Technical Services**

- (4) Data Services
- (5) Shared Web Services

#### **Support & Guidance**

- (6) Training
- (7) Technical Guidance
- (8) Consulting & Project Support



To implement this comprehensive agenda, Applied Geographics recommended funding to staff an office with 16 full-time positions and an annual budget of a bit more than \$3M, including annual funding for \$1.25M to support data development. Applied Geographics also offered several partial funding scenarios, including one that corresponded with the 2009 budget for LMIC and which would support 6 full-time positions plus other operating expenses.

Applied Geographics also identified priorities, based upon stakeholder input, that corresponded to the “no new funding” budget. Those priorities emphasized activities 1 through 5.

## **Enabling Legislation**

MnGeo was authorized by SF 2082, passed into law in May, 2009. The provisions of this legislation are codified in Minnesota Statutes 16B.99, which authorizes MnGeo “to provide coordination, guidance, and leadership, and to plan the implementation of Minnesota's geospatial information technology.”

The statute specifies that the office must:

- (1) coordinate and guide the efficient and effective use of available federal, state, local, and public-private resources to develop statewide geospatial information technology, data, and services;
- (2) provide leadership and outreach, and ensure cooperation and coordination for all Geospatial Information Systems (GIS) functions in state and local government, including coordination between state agencies, intergovernment coordination between state and local units of government, and extragovernment coordination, which includes coordination with academic and other private and nonprofit sector GIS stakeholders;
- (3) review state agency and intergovernment geospatial technology, data, and services development efforts involving state or intergovernment funding, including federal funding;
- (4) provide information to the legislature regarding projects reviewed, and recommend projects for inclusion in the governor's budget under section 16A.11;
- (5) coordinate management of geospatial technology, data, and services between state and local governments;
- (6) provide coordination, leadership, and consultation to integrate government technology services with GIS infrastructure and GIS programs;
- (7) work to avoid or eliminate unnecessary duplication of existing GIS technology services and systems, including services provided by other public and private organizations while building on existing governmental infrastructures;
- (8) promote and coordinate consolidated geospatial technology, data, and services and shared geospatial Web services for state and local governments; and
- (9) promote and coordinate geospatial technology training, technical guidance, and project support for state and local governments.

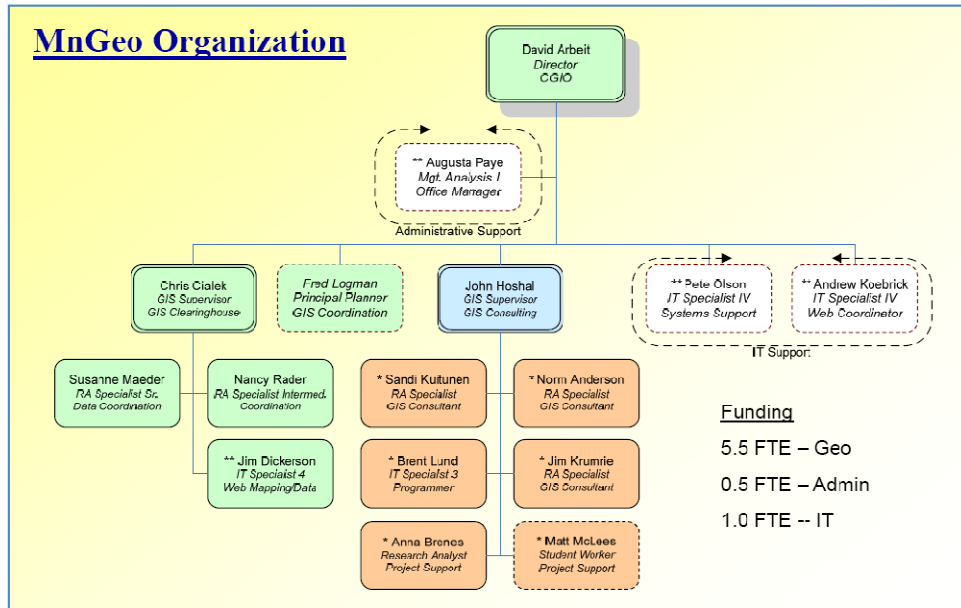
The legislation establishing MnGeo also included the following:

By January 15, 2010, the chief geospatial information officer must provide a report to the chairs and ranking minority members of the legislative committees with jurisdiction over the policy and budget for the office. The report must address all statutes that refer to the

Minnesota Geospatial Information Office or land management information system and provide any necessary draft legislation to implement any recommendations.

**Staffing and Resources**

MnGeo is located within the Department of Administration and directed by David Arbeit, the State's Chief Geospatial Information Officer. Funding for core MnGeo functions – those related to coordination -- is provided through a legislative appropriation of \$792,000/year for the current biennium (7/1/2009 – 6/30/2011). This budget mostly supports staff shown in green. Funding for project consulting is provided on a cost-recovery basis through contracts with other agencies and supports staff shown in orange. Other staff are funded through a mix of funding. Staff providing administrative and IT support are shared with other programs within the Office of Geographic and Demographic Analysis.

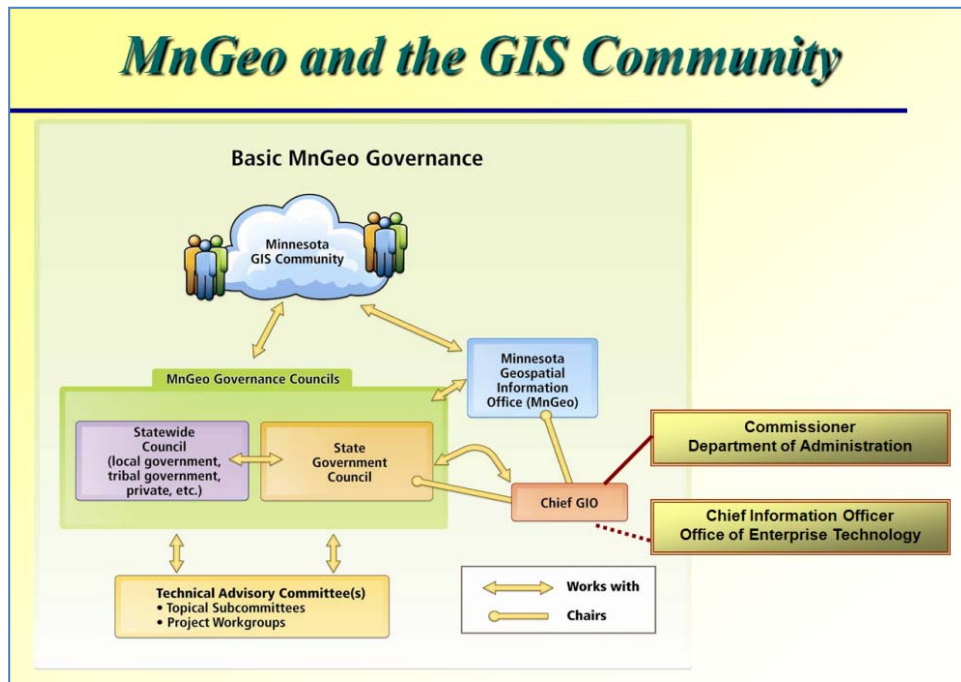


## Governance, Organization, Relationships

MnGeo works closely with the State CIO and OET to coordinate the development and use of enterprise geospatial technology. Although the Chief GIO does not formally report to the State CIO, the CIO has appointed the CGIO to the State's Enterprise Architecture Council and has invited the CGIO to participate in OET Leadership Team meetings.

MnGeo has been provided scheduling access to the OET telecommunications conference rooms and, in early November, moved MnGeo servers to OET's managed data center, which provides 24x7 staffing and backup power for improved reliability.

MnGeo is advised by two Advisory Councils and a technical committees and work groups established to address specific issues.



# Government Geospatial Advisory Council Overview

## Mission

The *Statewide Geospatial Advisory Body* advises the Minnesota Geospatial Information Office (MGIO) about issues, policies, priorities, and investments needed to improve services statewide through the coordinated, affordable, reliable, and effective use of GIS.

## Purpose

This Council advises the MGIO on elements of geospatial coordination that affect or are affected by interactions between the State and the broad community of geospatial stakeholders.

## Members

Representatives of a cross-section of organizations that benefit from the application of geospatial technology, especially services provided by the state. Members represent counties, cities, regional governments, tribal governments, universities, businesses, nonprofit organizations, educational organizations, federal and state agencies, and other stakeholder groups. The State's Chief Geospatial Information Officer serves as a non-voting, ex-officio member of the Council. The Council chair is elected by its voting members.

<u>Name</u>	<u>Affiliation</u>	<u>Sector</u>
Brad Anderson	City of Moorhead	City, Non-Metro
Rebecca Blue	SEH	Business
Will Craig	University of MN	At-Large
Rebecca Foster	City of Edina	MN GIS/LIS Consortium
Patricia Henderson	ARDC	Regional, Non-Metro
Brian Huberty	US Fish & Wildlife	Federal, Other
Stuart Lien	Clearwater Co.	County, Non-Metro
John Mackiewicz	WSB & Associates	Business
Haila Maze	City of Minneapolis	City, Metro
Robert McMaster	University of MN	Education, U of M
Robert Meeks	MN School Board Association	Education, K12
Tim Ogg	Board of Water & Soil Resources	State Government
Mark Olsen	Mn Pollution Control Agency	State Government
Tony Pistilli	Metropolitan Council	Metropolitan Council
Victoria Reinhardt	Ramsey County	County, Metro
Terry Schneider	MetroGIS Policy Board	Regional, MetroGIS
Rick Schute	MN National Guard	State Government
Dawn Sherk	White Earth Nation	Tribal
Stephen Swazee	SharedGeo	At-Large
Gary Swenson	Hennepin County	At Large
Mark Thomas	MNSCU	Education, MnSCU
Sally Wakefield	1000 Friends of Minneosta	Non-Profit
Ron Wencil	USGS	Federal, USGS

## **Duties**

The following duties were developed by the Strategic Planning Committee of the Governor's Council for Geographic Information and adopted as guidance to MnGeo.

- Review and recommend statewide standards and best practices
- Determine & advocate for the interests and needs of stakeholders
- Identify public expenditures that reflect the priorities of the community
- Advise non-state agency organizations and the MGIO on geospatial issues
- Represent stakeholder sectors and serve as a liaison with respective policy bodies
- Support the decision-making process for the MGIO by involving the relevant and affected parties

## **Member Expectations**

- Meet quarterly or as needed.
- Represent stakeholder perspective by:
  - Coordinating among agency stakeholders
  - Keeping informed about agency needs and capabilities.
  - Communicating with stakeholder organizations
  - Bringing stakeholder issues and concern to the attention of MGIO
  - Providing stakeholder input and responses to initiatives of MGIO and committees and work groups working on specific issues
- Help keep MnGeo informed about:
  - Legislative and budget initiatives of stakeholders
  - Stakeholder concerns
  - How MnGeo can help
- Help support Advisory Council work groups by:
  - Participating
  - Recruiting participants in committees and work groups



## **Committees and Work Groups**

In addition to the State Government and Statewide Advisory Councils, MnGeo will be advised by committees and technical work groups to address specific issues, generally technical in nature. Members of these groups comprise “subject matter experts” working in the geospatial field. The Advisory Councils may ask for presentations from any of these work groups at any of its meetings. The Chief Geospatial Information Officer will not act on recommendations made by these committees without asking for Advisory Council advice.

### **Existing Committees**

The following committees that had previously affiliated with the Minnesota Governor’s Council on Geographic Information and have continued to function. For more information about these committees and their work, see the committee websites. Note that these addresses may not yet be linked directly to the MnGeo web site, but will be in the near future.

Standards Committee (<http://www.gis.state.mn.us/committee/stand/>)

Hydrographic Data Committee (<http://www.gis.state.mn.us/committee/hydro/>)

Emergency Preparedness Committee (<http://www.gis.state.mn.us/committee/emprep/>)

Digital Elevation Committee (<http://www.gis.state.mn.us/committee/elevation/>)

Digital Cadastral Data Committee (<http://www.gis.state.mn.us/committee/land/lrm2000/>)

Outreach Committee (<http://www.gis.state.mn.us/committee/outreach/>)

### **Suggested Committees and Work Groups**

The following additional committees and work groups have been identified by MnGeo as necessary for advice about issues that the office is currently addressing.

Geocoding Shared Service Work Group

Shared Services Directory Work Group

State-Local Government Agreement Work Group

## Priorities and Issues

The full scope of functions that emerged from the comprehensive study of GIS coordination needs identified by Applied Geographics during the Drive to Excellence Enterprise GIS Initiative encompassed eight program elements, clustered in three general areas: Coordination, Technical Services and Technical Support. To implement this comprehensive vision, Applied Geographics also recommended an annual budget of more than \$3 million.

### Geospatial Coordination

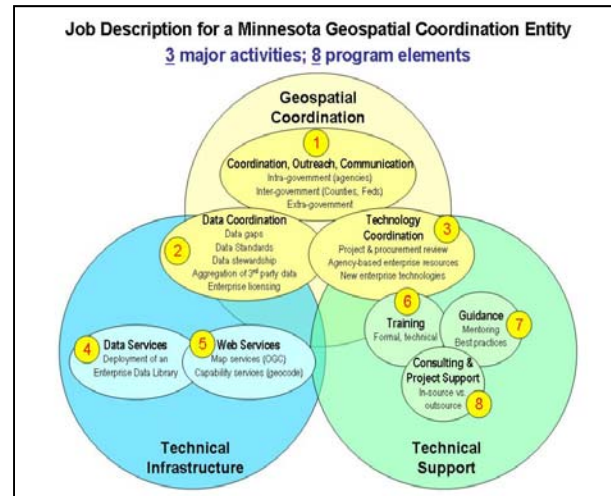
- Coordination & Outreach
- Data Coordination
- Technology Coordination

### Technical Services

- Data Services
- Shared Web Services

### Technical Support

- Training
- Technical Guidance
- Consulting & Project Support



The annual appropriation provided by the legislature for MnGeo is considerably less: about \$800,000. Clearly, the comprehensive vision for MnGeo will not be implemented overnight.

## Priorities

Establishing a clear sense of priorities is the principal issue that emerges from the conflict between the ambitious agenda proposed for MnGeo and the limited resources available. The Applied Geographics study provides some guidance, based upon a survey of state agencies.

Less formal input from other stakeholders confirms that the

recommended priorities reflect those of the broader statewide community of stakeholders.

Rank	Group	Program Element
1	A	Leadership, Outreach & Communication
2	A	Data Coordination
3	A	Web Services
4	B	Data Services
5	B	Technology Coordination
6	C	Training
7	C	Technical Guidance
8	C	Project Consulting

Minnesota Statute 16B.99, which establishes MnGeo and identifies its responsibilities, most strongly emphasizes elements in Groups A and B.

## **Issues**

MnGeo considers all of the recommended functional areas to be important. To the extent that collaboration between MnGeo and stakeholders and creative ways to leverage alternative revenue streams and resources allow, MnGeo will attempt to pursue them.

Applied Geographics also identified issues related to the recommended transition of LMIC that MnGeo will need to address during a transition period spanning 12 to 18 months after it is established. These have guided MnGeo's activities since it was formally established.

1. Transition from LMIC to MnGeo
2. Governance and Organizational Relationships
3. Outreach
4. Geospatial Infrastructure Development
5. Implementation Plan for High Priority Elements

In addition, MnGeo has sought to be nimble enough to respond to any opportunities to fulfill its responsibilities as they present themselves.

## MnGeo Activity Updates

To keep members of the advisory council informed, every meeting will include a brief report about active projects and an opportunity to discuss projects being considered by state agencies.

### Legislative Update

MnGeo is charged with coordinating legislative initiatives from State agencies and with providing advice to the legislature, when asked, about legislation and initiatives from other sources that concern geospatial information or technology. Members of the Statewide Geospatial Advisory Council are encouraged to identify any legislative initiatives or requests that involve their agency and any opportunities for improving the collective capacity of the state to improve services through GIS.

As of January 7, no initiative directly involving geospatial technology is planned by State agencies for the 2010 legislative session. MnGeo has asked members of the State Government Geospatial Advisory Council to identify any such initiatives if they occur. MnGeo also requests that members of the Statewide Geospatial Advisory Council do the same. MnGeo will inform both councils of any initiatives as they are identified.

The only specific legislative issue at this time concerns the following MnGeo obligation specified in the legislation creating MnGeo:

By January 15, 2010, the chief geospatial information officer must provide a report to the chairs and ranking minority members of the legislative committees with jurisdiction over the policy and budget for the office. The report must address all statutes that refer to the Minnesota Geospatial Information Office or land management information system and provide any necessary draft legislation to implement any recommendations.

Twelve sections of Minnesota Statutes are affected by this requirement. MnGeo has prepared and distributed a draft report and invited all parties directly affected by the recommendations made in the report to provide advice about the draft. A meeting with representatives of agencies affected by language related to responsibilities for water resources data is scheduled for January 8, 2010. Copies of the draft report are available for review.

Looking forward to the 2010 legislative session, MnGeo has been asked to testify at a January hearing scheduled in response to interest in legislation that would provide for agency reporting of programs and investments to allow them to be mapped, as is currently being done to meet federal requirements for the American Recovery and Reinvestment Act (ARRA).

## **Project Updates**

- **LiDAR Data Collaboration.** DNR was appropriated \$5.6M from the FY2010/2011 to acquire digital elevation data for about 40 percent of the state using LiDAR technology. A portion (2.5%) of the funds is set aside for MnGeo for data coordination and distribution. DNR, MnDOT and MnGeo staff have collaborated on the project planning and recently submitted a grant request to the USGS to fund 20% of the costs for the Arrowhead region.
- **Orthoimagery Data Collaboration.** MnGeo has worked with the DNR and the Metropolitan Council to prepare an RFP for digital orthoimagery for a 13-county region surrounding the Twin Cities. The resolution will be at ½ meter or better. The RFP will be publically released soon so that flights can be completed before spring.
- **Stimulus Investment Mapping.** Minnesota Management and Budget has responsibility for meeting federal reporting and transparency requirements for funding to the state from the American Recovery and Reinvestment Act (ARRA). MnGeo has implemented an interactive web mapping application to help MMB meet this requirement. The project is guided by a steering committee that includes six legislative leaders and their staffs. See MMB's Recovery web site at <http://www.mmb.state.mn.us/multisites/recovery/rec-map>.
- **Broadband Mapping.** Commerce contracted with Connected Nation in 2008 for a web mapping application that depicts broadband mapping service throughout the state. The National Telecommunications Infrastructure Administration invited states to designate applicants to submit proposals to implement an expanded program to support a national effort. Connected Nation was designated as the State's applicant by the Governor in August, with the provision that CN coordinate the effort with the Department of Commerce and MnGeo. Commerce has entered into an agreement with CN that will ensure that the resulting data is made available to the State through MnGeo.

## **FGDC Grant Proposals**

The Federal Geographic Data Committee's annual Cooperative Agreement grant program is an opportunity for organizations to receive federal funding for initiatives that support the goals of the National Spatial Data Infrastructure. A number of organizations, including the Land Management Information Center, MetroGIS, and the Arrowhead Regional Development Commission have received FGDC grants since the program began in the 1990s.

MnGeo has prepared a proposal for the 2010 FGDC CAP grant program and knows of two others. Grants are offered in seven categories. Minnesota proposals are submitted in Categories 5 and 7. MnGeo has submitted one proposal that supports the State's commitment to develop the Minnesota Spatial Data Infrastructure. The Chief GIO has written a letter of endorsement for a Category 5 proposal from MetroGIS that is considered to address strategically critical issues related to data collaboration. The Statewide Geospatial Advisory Council is invited to provide advice about any of the proposals listed below.

Category 5: Return on Investment (ROI) Methodology and Business Case Development for Multi-agency NSDI Projects

Category 7: Demonstration of Geospatial Data Partnerships Across Local, State, Tribal, and Federal Government

<b>Applicant</b>	<b>Title</b>	<b>Category</b>	<b>Request</b>
MetroGIS	Measuring Public Value of Geospatial Commons: A MetroGIS Case Study	5	\$ 50,000
MnGeo	Minnesota Local Government Boundaries – An Initiative to Support the National Map and NSDI	7	\$ 75,000
DEED	Statewide Expansion of M3D Database*	7	\$ 75,000

\* Actual project title has not yet been provided.

## Stakeholder Updates

MnGeo encourages stakeholders to report about their project initiatives that have relevance to MnGeo's mission.