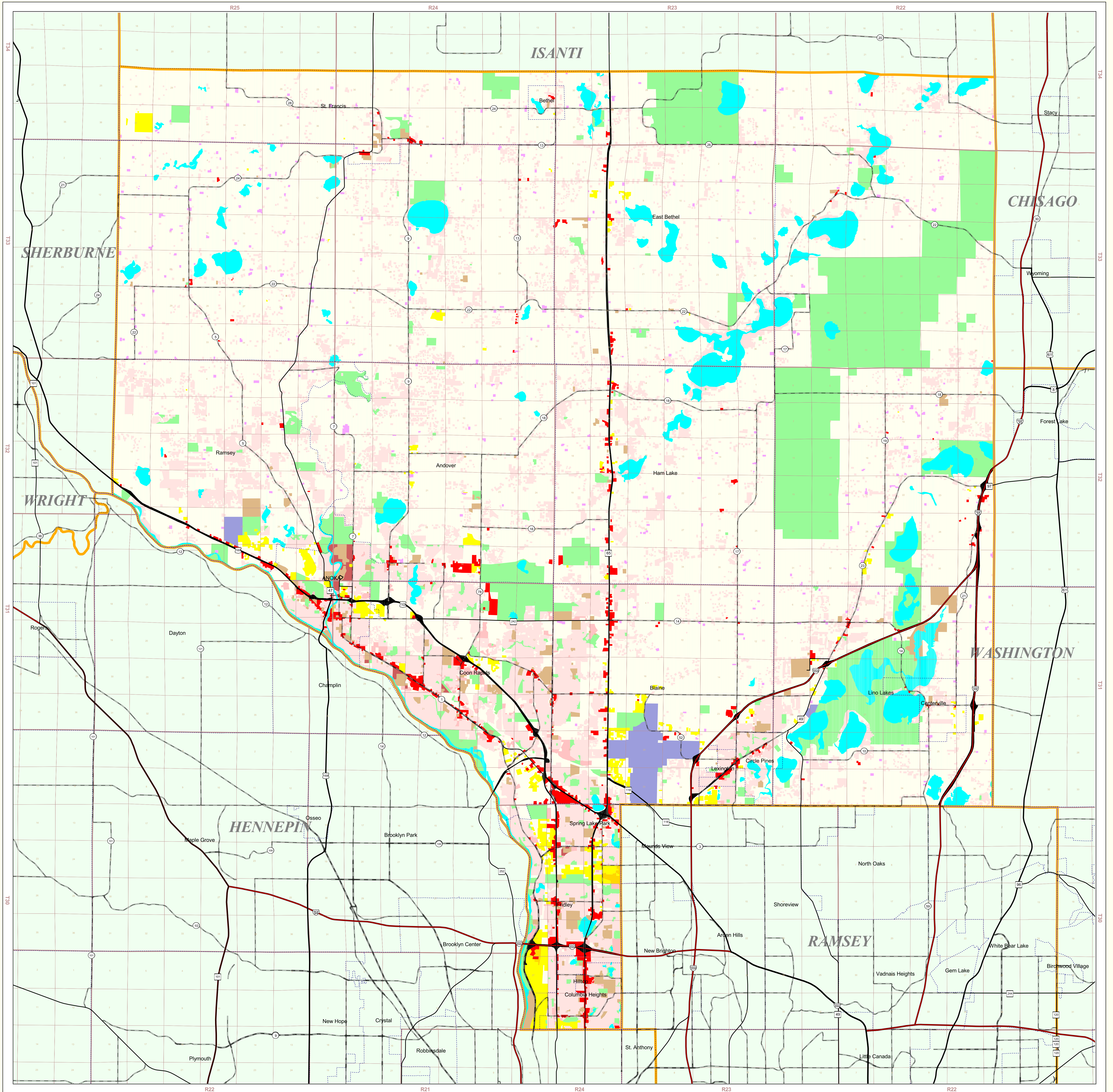


Anoka County Land Use and Cover

State of Minnesota
1990



MAP FEATURES

- Land Use**
- Single Family Residential
 - Multi-Family Residential
 - Farmsteads
 - Commercial
 - Industrial
 - Industrial Parks not Developed
 - Vacant/Agricultural
 - Parks & Recreation Areas
 - Open Water Bodies
 - Public-Semi Public
 - Public & Semi-Public Vacant
 - Airports
 - Major Four Lane Highways
- Cities**
COUNTY SEAT
Other Cities
- Highways**
- Interstate Highway
 - U.S. Trunk Highway
 - State Trunk Highway
 - County State-Aid Highway (CSAH)
- Public Land Survey**
- State Boundary
 - County Boundary
 - Township & Range
 - Section
- T34 Township
R25W Range & Direction

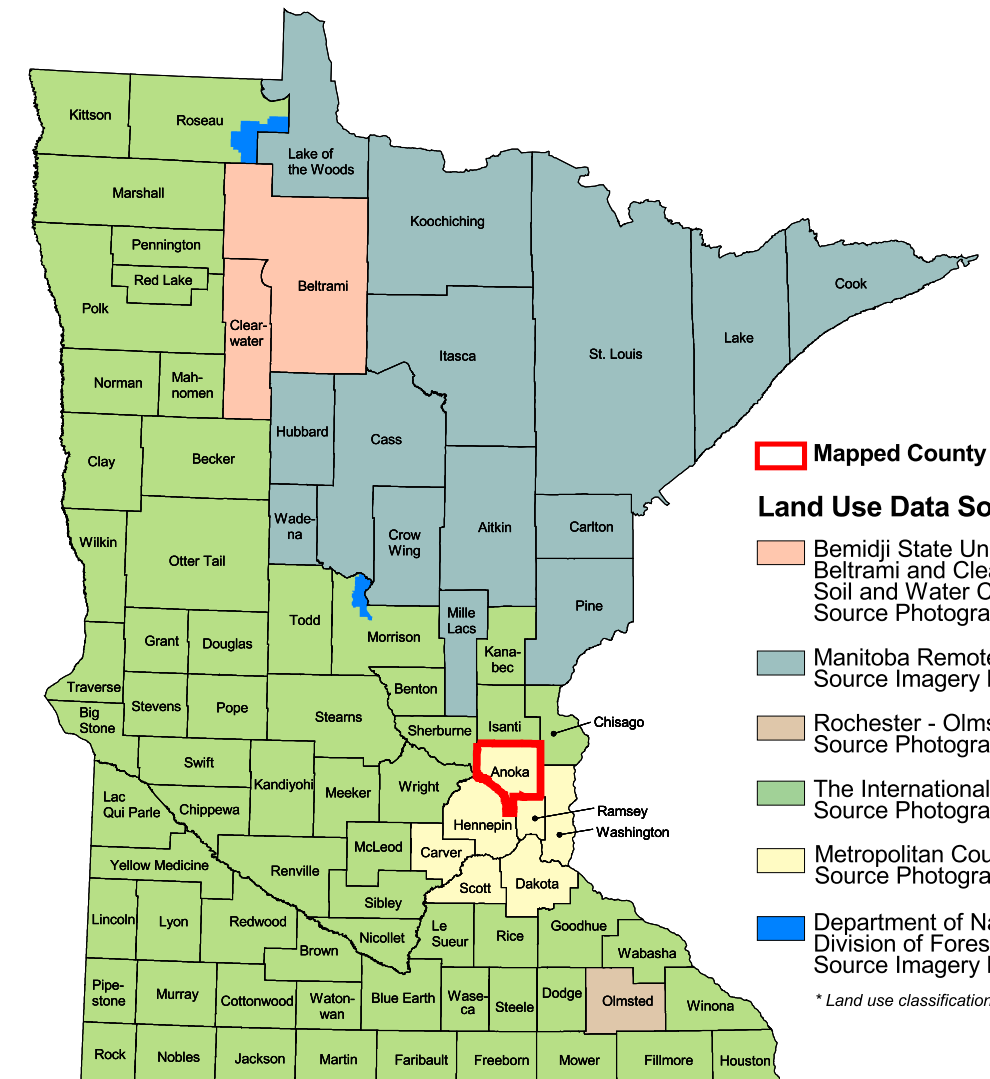
Anoka County Land Use Statistics

Source: The Land Management Information Center (LMIC)

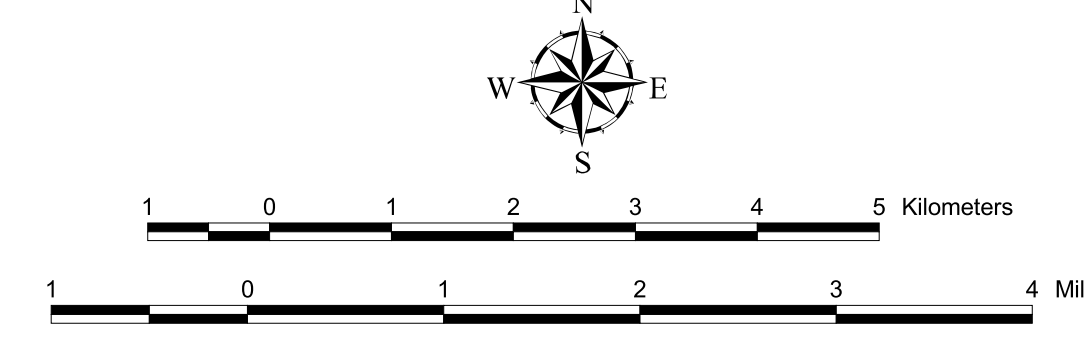
DESCRIPTION	ACRES	% ACRES
Single Family Residential	41843.3	14.7
Multi-Family Residential	1514.4	0.5
Farmsteads	1198	0.4
Commercial	3648.4	1.3
Industrial	3304.2	1.2
Industrial Parks not Developed	116.9	<0.1
Vacant/Agricultural	18618.3	6.7
Parks & Recreation Areas	28071.8	10.2
Open Water Bodies	12624.4	4.4
Public-Semi Public	3304.8	1.2
Public & Semi-Public Vacant	272.5	<0.1
Airports	2058.8	0.7
Major Four Lane Highways	2886.9	0.9
TOTAL	285,115	100%

Data Sources

- 1. Generalized Land Use for the Twin Cities Metropolitan Area, Minneapolis Council, 1990.
- 2. 1992 Census of Population, U.S. Bureau of the Census, 1995.
- 3. Minnesota Department of Transportation, 1997-98.
- 4. Provided by the Minnesota Land Management Information Center from U.S. Geological Survey (USGS), 1:50,000 scale, 30' by 30' quadrangle maps published between 1977 and 1996.



- Land Use Data Sources**
- Benning State University - Department of Geography, Beltrami and Clearwater County Soil and Water Conservation Districts, Source Imagery Date: 1986
 - Manitoba Remote Sensing Centre, Source Imagery Date: 1991-1996
 - Rochester - Onsted Planning Department, Source Imagery Date: 1992
 - The International Coalition, Source Imagery Date: 1988-1990
 - Metropolitan Council, Source Imagery Date: 1990
 - Department of Natural Resources, Division of Forestry - Resource Assessment, Source Imagery Date: 1992, 1993 and 1996
- *Land use classifications may slightly differ between data sources.



ABOUT THIS MAP

Data Sources: The land use / land cover categories displayed on this map were derived from rectified air photos (1:38,400) taken on May 4 or May 5, 1990. Reverse direction, non-residential building permits and fish checks were used when a land use could not be determined from the photos.

Data Interpretation and Computerization: First, air photos were rectified by Marklund to match a photo grid used by the Metropolitan Council. Corner ticks of the air photo grid and the Minnesota Department of Transportation's digital road centerline layer (1:24,000) were used to register the photos. The photos were then interpreted by Metropolitan Council staff. Next, mylars of 1980 and 1984 land use (1:9,600) were overlain on the photos and changes were delineated. Corrections to the earlier data sets that had been submitted by cities and townships were also incorporated. Reverse direction, non-residential building permits and fish checks were used when land use could not be determined from the photos. The updated mylars were digitized in a vector format as 251 individual files. The files were then edge-matched and registration corrections made using the road centerlines.

The land use / land cover data was compiled to meet National Map Accuracy Standards at the 1:24,000 scale (within approximately 16.5 meters of actual location), although some instances show offsets as large as 70 meters.

On-line documentation: <http://lmi.csl.state.mn.us/metadata/landuse80.html>

Credits and Acknowledgements

Seven-county metropolitan land use data provided by:
Metropolitan Council

Liability Statement
The Land Management Information Center (LMIC) does not warrant the results you may obtain by using this map. This map is provided "as is" without express or implied warranties, including warranties of merchantability and fitness. In no event will LMIC be liable for any consequential, incidental or special damages, including any lost profits or lost savings, even if a LMIC representative has been advised of the possibility of such damages or any other claim by any third party.

Map Projection: UTM, Extended Zone 15
Datum: NAD83

Distribution Information
This map was prepared in April, 1999. Both the map and the data used to create it are available from the Land Management Information Center at Minnesota Planning.
<http://mapserver.lmic.state.mn.us/landuse>

You may also view a generalized, interactive land use map of Minnesota, along with detailed information about land use data at:
<http://mapserver.lmic.state.mn.us/landuse>

For further assistance, or to order copies of this map, contact:
Land Management Information Center
658 Cedar Street
Centennial Building, Room 330
St. Paul, MN 55155
Phone: (651) 296-1211
FAX: (651) 296-1212
E-Mail: clearinghouse@mplanning.state.mn.us

