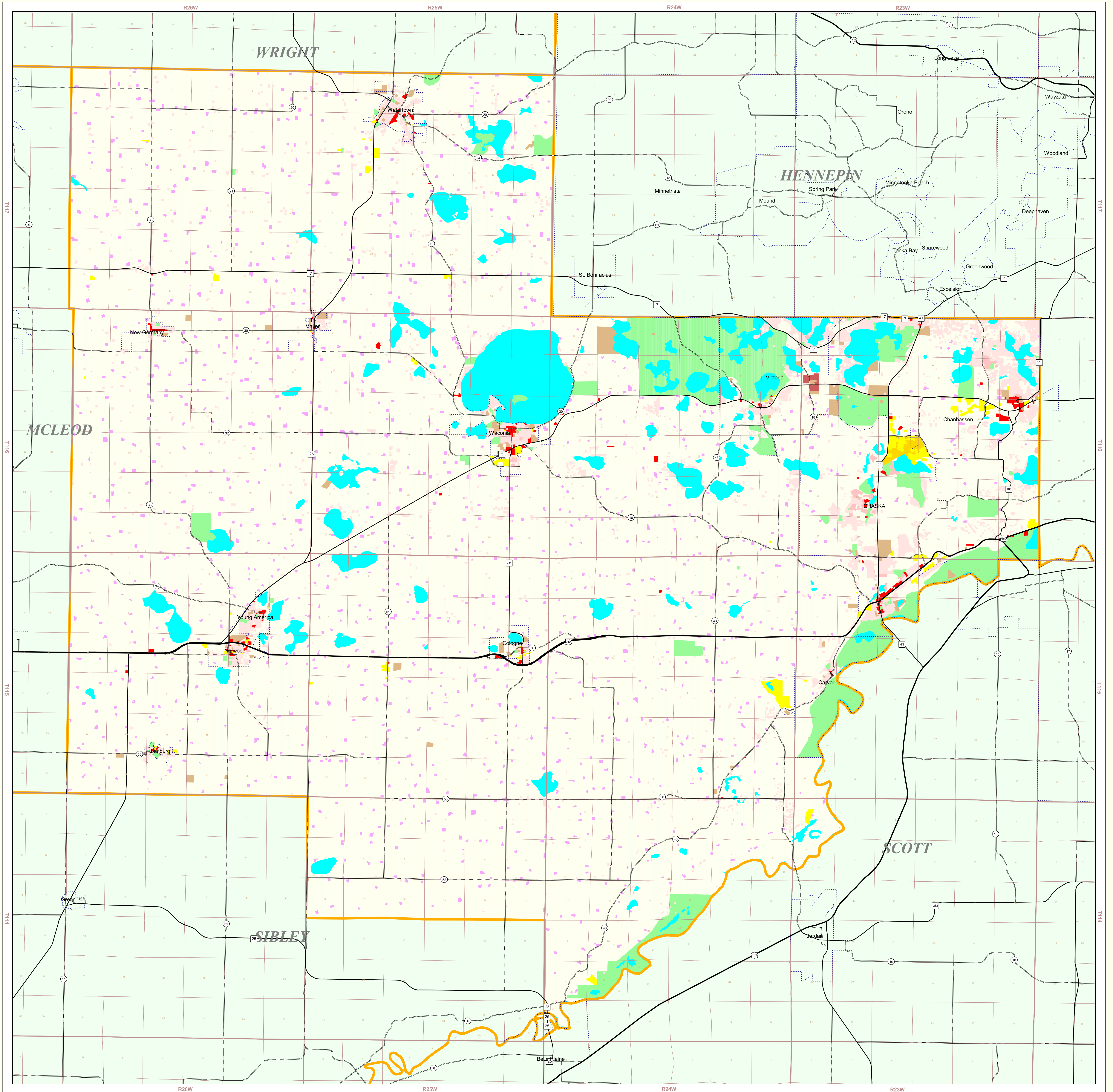


Carver County Land Use and Cover

State of Minnesota

1990



MAP FEATURES

- Land Use**
 - Single Family Residential
 - Multi-Family Residential
 - Farmsteads
 - Commercial
 - Industrial Parks not Developed
 - Vacant/Agricultural
 - Parks & Recreation Areas
 - Open Water Bodies
 - Public-Semi Public
 - Public-Semi Public Vacant
 - Airports
 - Major Four Lane Highways
- Cities**
 - COUNTY SEAT
 - Other Cities
- Highways**
 - U.S. Trunk Highway
 - State Trunk Highway
 - County State-Aid Highway (CSAH)
- Public Land Survey**
 - State Boundary
 - County Boundary
 - Township & Range
 - Section

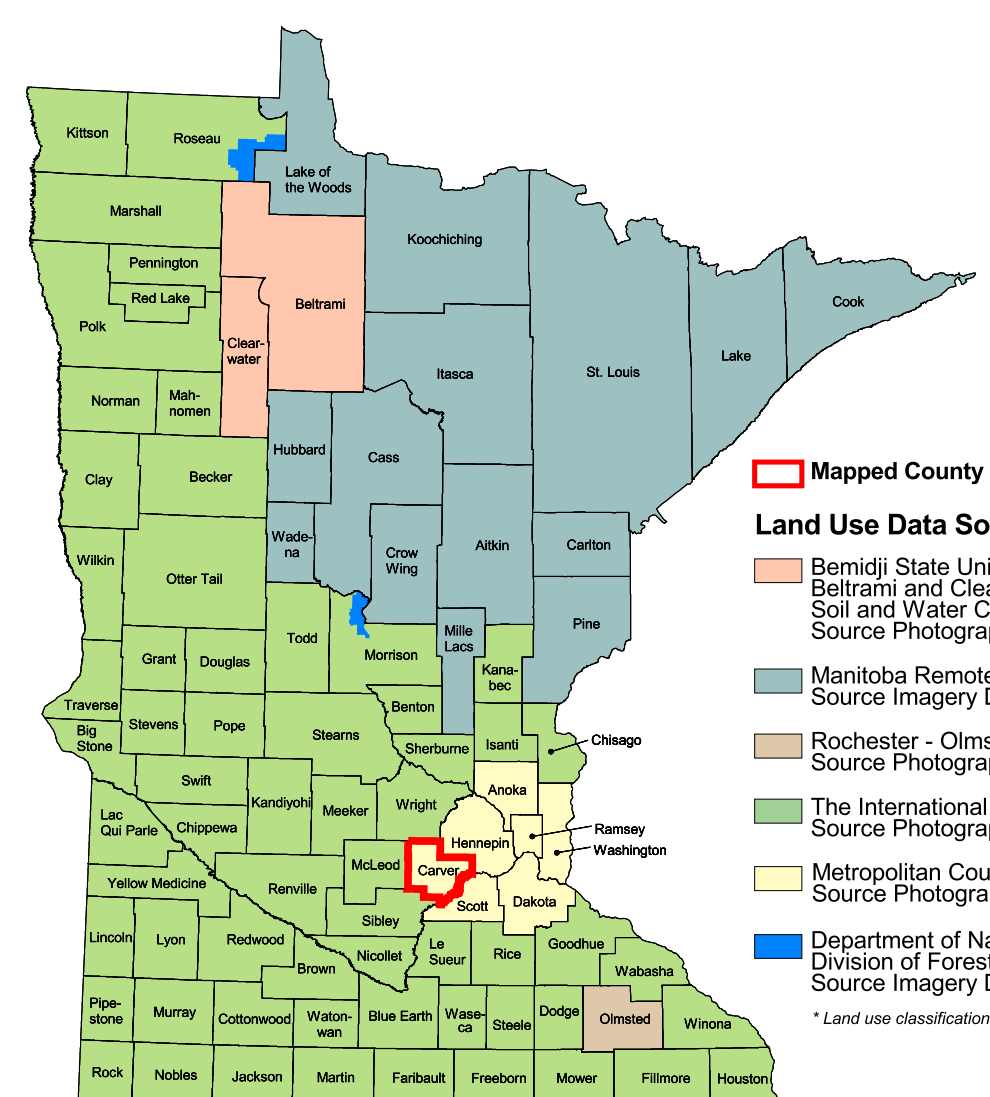
Carver County Land Use Statistics

Source: The Land Management Information Center (LMIC)

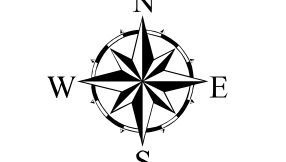
DESCRIPTION	ACRES	% ACRES
Single Family Residential	4988	3.4
Multi-Family Residential	316.8	0.1
Farmsteads	3922.9	1.6
Commercial	522.8	0.2
Industrial	566	0.4
Industrial Parks not Developed	182.4	< 0.1
Vacant/Agricultural	20237.7	84.2
Parks & Recreation Areas	888.8	4.1
Open Water Bodies	1257.9	5.2
Public-Semi Public	1225.1	0.5
Public & Semi-Public Vacant	75.9	< 0.1
Airports	0	0
Major Four Lane Highways	232.6	< 0.1
TOTAL	240,365	100%

Data Sources

- Generalized Land Use for the Twin Cities Metropolitan Area, Metropolitan Council, 1990
- 1990 Census Files, U.S. Bureau of the Census, 1995
- Minnesota Department of Transportation, 1987-88
- Produced by the Minnesota Land Management Information Center from U.S. Geological Survey (USGS), 1:250,000 scale, 30' and 1:500,000 scale, published between 1977 and 1986.



- Map of County Location**
- Land Use Data Sources**
 - Bentley State University - Department of Geography, Beltrami and Clearwater County Soil and Water Conservation Districts, Source Imagery Date: 1986
 - Manitoba Remote Sensing Centre, Source Imagery Dates: 1991-1998
 - Rochester - Olmsted Planning Department, Source Imagery Date: 1992
 - The International Coalition, Source Imagery Dates: 1988-1990
 - Metropolitan Council, Source Imagery Date: 1990
 - Department of Natural Resources, Source Imagery Dates: 1992, 1993 and 1996



ABOUT THIS MAP

Data Sources: The land use / land cover categories displayed on this map were derived from rectified air photos (1:38,400) taken on May 4 or May 5, 1990. Reverse directories, non-residential building permits and field checks were used when a land use could not be determined from the photos.

Data Interpretation and Computerization: First, air photos were rectified by Markford to match a photo grid used by the Metropolitan Council. Corner ticks of the air photo grid and the Minnesota Department of Transportation's digital road centerline layer (1:24,000) were used to register the photos. The photos were then interpreted by Metropolitan Council staff. Next, mylars of 1980 and 1984 land use (1:9,600) were overlain on the photos and changes were delineated. Corrections to the earlier data sets that had been submitted by cities and townships were also incorporated. Reverse directories, non-residential building permits and field checks were used when land use could not be determined from the photos. The updated mylars were digitized in a vector format as 251 individual tiles. The tiles were then edgematched and registration corrections made using the road centerlines.

The land use / land cover data was compiled to meet National Map Accuracy Standards at the 1:24,000 scale (within approximately 16.5 meters of actual location), although some instances show offsets as large as 70 meters.

On-line documentation: <http://lucy.lmic.state.mn.us/metadata/usage00.html>

Credits and Acknowledgements

Seven-county metropolitan land use data provided by: Metropolitan Council

Liability Statement
The Land Management Information Center (LMIC) does not warrant the results you may obtain by using this map. This map is provided "as is" without express or implied warranties, including warranties of merchantability and fitness. In no event will LMIC be liable for any consequential, incidental or special damages, including any lost profits or lost savings, even if a LMIC representative has been advised of the possibility of such damages or any other claim by any third party.

Map Projection: UTM, Extended Zone 15
Datum: NAD83

Distribution Information
This map was prepared in April, 1999. Both the map and the data used to create it are available from the Land Management Information Center at Minnesota Planning.
<http://mapserver.lmic.state.mn.us/landuse>

You may also view a generalized, interactive land use map of Minnesota, along with detailed information about land use data at:
<http://mapserver.lmic.state.mn.us/landuse>

For further assistance, or to order copies of this map, contact:
Land Management Information Center
658 Cedar Street
Centennial Building, Room 330
St. Paul, MN 55155
Phone: (651) 296-1211
FAX: (651) 296-1212
E-Mail: clearinghouse@mnplanning.state.mn.us

