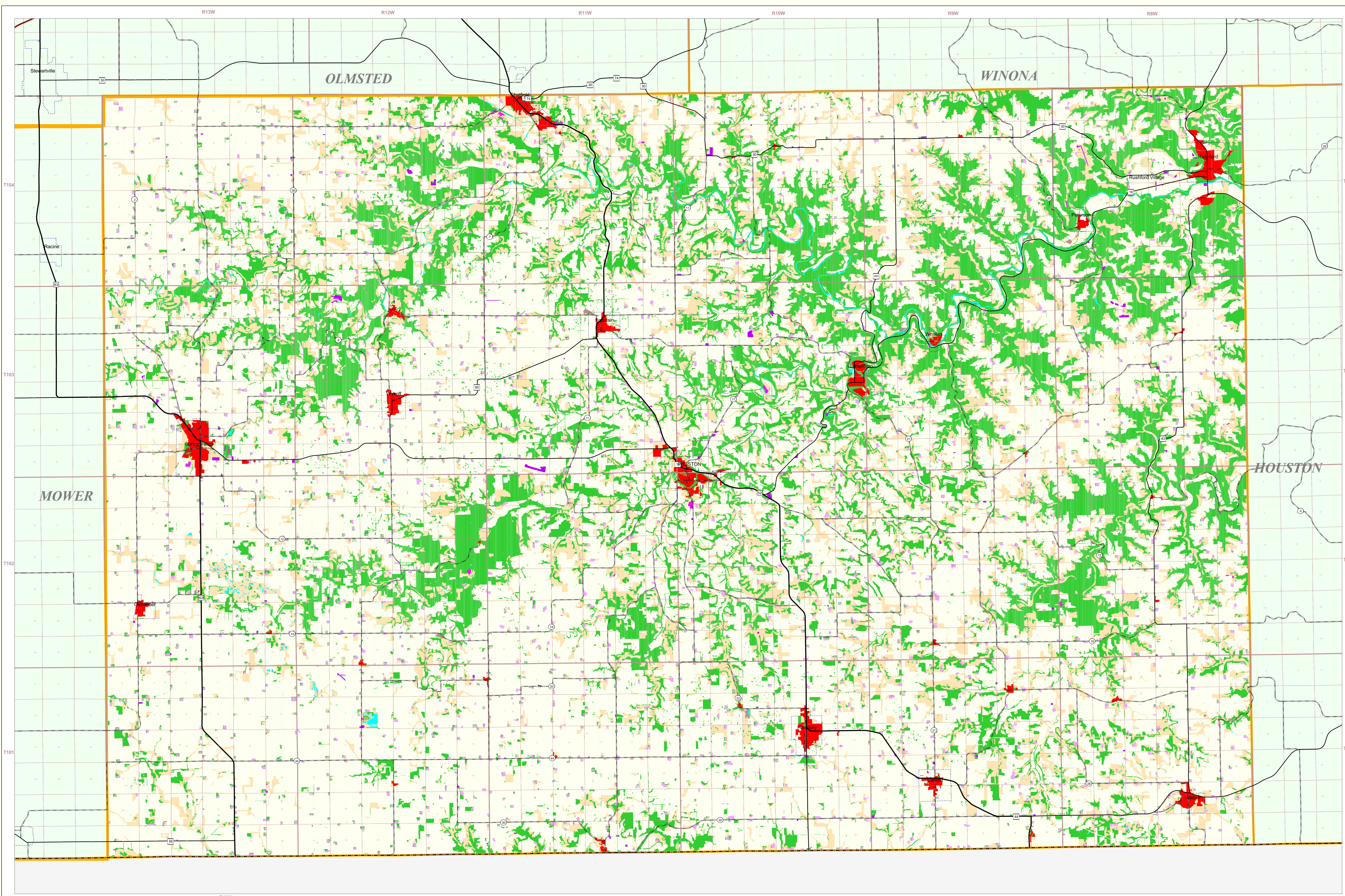


Fillmore County Land Use and Cover

State of Minnesota

1988 - 1990



MAP FEATURES

- Land Use***
 - Urban and Industrial
 - Farmsteads and Rural Residences
 - Rural Residential Development Complexes
 - Other Rural Developments
 - Cultivated Land
 - Transitional Agricultural Land
 - Grassland
 - Grassland-Shrub-Tree Complex (Deciduous)
 - Grassland-Shrub-Tree Complex (Coniferous)
 - Deciduous Forest
 - Coniferous Forest
 - Water
 - Wetlands
 - Gravel Pits and Open Mines
 - Bare Rock
 - Exposed Soil, Sandbars, and Sand Dunes
 - Unclassified/Unlabeled/Outside State or County
- Cities***
 - COUNTY SEAT
 - Other Cities
 - Municipal Boundary
- Highways**
 - Interstate Highway
 - U.S. Trunk Highway
 - State Trunk Highway
 - County State-Aid Highway (CSAH)
- Public Land Survey***
 - State Boundary
 - County Boundary
 - Township & Range Section
 - T34 Township
 - R25W Range & Direction

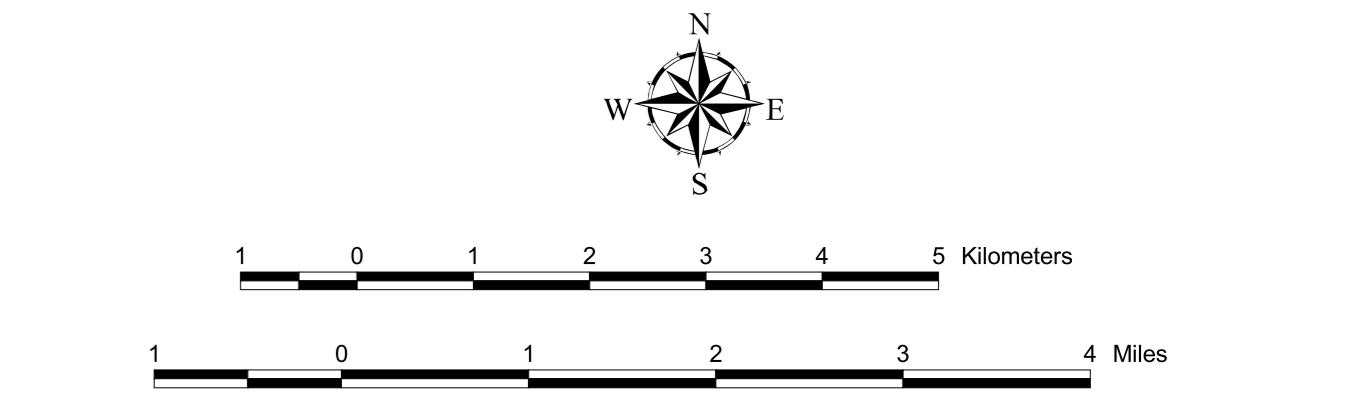
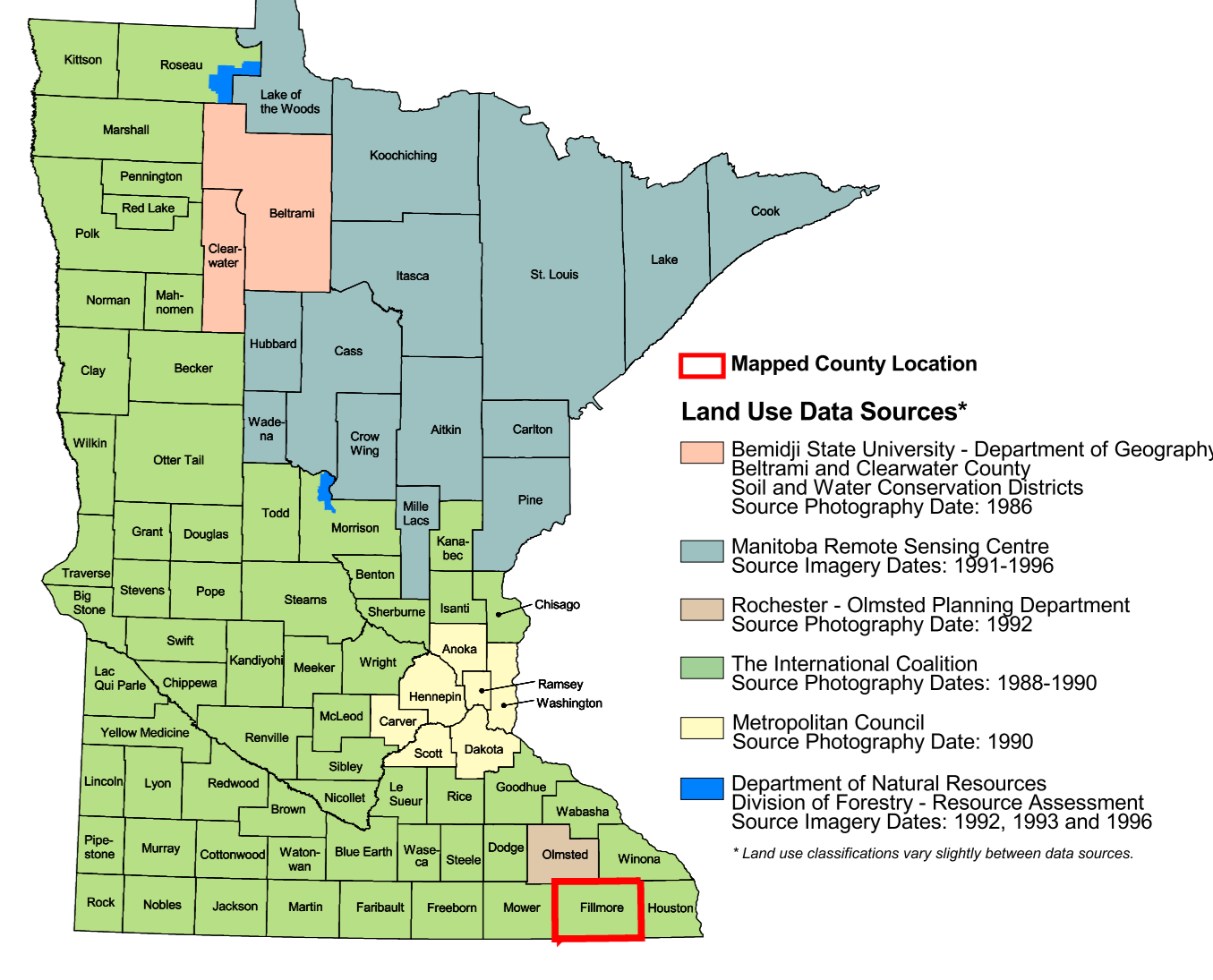
Data Sources

- * The International Coalition for Land and Water Stewardship in the Red River Basin
- * Minnesota Department of Natural Resources
- * Minnesota Department of Transportation

Fillmore County Land Use Statistics

Source: The Land Management Information Center (LMIC)

DESCRIPTION	ACRES	% ACRES
Urban and Industrial	2,000	0.1
Farmsteads and Rural Residences	100,000	4.1
Rural Residential Development Complexes	100,000	4.1
Other Rural Developments	100,000	4.1
Cultivated Land	100,000	4.1
Transitional Agricultural Land	100,000	4.1
Grassland	100,000	4.1
Grassland-Shrub-Tree Complex (Deciduous)	100,000	4.1
Grassland-Shrub-Tree Complex (Coniferous)	100,000	4.1
Deciduous Forest	100,000	4.1
Coniferous Forest	100,000	4.1
Water	100,000	4.1
Wetlands	100,000	4.1
Gravel Pits and Open Mines	100,000	4.1
Bare Rock	100,000	4.1
Exposed Soil, Sandbars, and Sand Dunes	100,000	4.1
Unclassified/Unlabeled/Outside State or County	100,000	4.1
TOTAL	1,100,000	100%



ABOUT THIS MAP

Data Sources: The land use / land cover categories displayed on this map were derived from sources that included the U.S. Department of Agriculture, Agricultural Stabilization and Conservation Service's (ASCS) low altitude, section-centered, 35mm color aerial photography taken during 1988-1990 and U.S. Fish and Wildlife Service National Wetlands Inventory (NWI) 1:24,000-scale field maps. Landsat satellite images (date unrecorded) were used to verify the classifications.

Data Interpretation and Computerization: The project was coordinated by The International Coalition for Land and Water Stewardship in the Red River Basin. Land use / land cover interpretation was performed by DPA International. The smallest area interpreted was approximately 2.5 acres.

Land use / land cover information was transcribed on to stable-base mylars registered to U.S. Geological Survey 1:24,000-scale topographic maps and then digitized by DPA International or Alexandria Technical College staff. Minnesota Department of Natural Resources MIS Bureau staff then joined the digitized files together to create county coverages.

On-line documentation: <http://lucy.lmic.state.mn.us/metadata/luse89.html>

Credits and Acknowledgements
Data collection and interpretation supported by the Minnesota Future Resources Fund as recommended by the Legislative Commission on Minnesota Resources (LCMR).

The following groups also participated over an extended period:
DPA International
The International Coalition
Minnesota Board of Water and Soil Resources
Minnesota Department of Natural Resources
Minnesota Land Management Information Center
North Dakota State University - Agricultural Engineering Department
The Red River Management Board
University of Minnesota - Department of Forest Resources
University of North Dakota - Geography Department
Wadeath, Smith and Notling

Map Projection: UTM, Extended Zone 15
Datum: NAD83

Liability Statement
The Land Management Information Center (LMIC) does not warrant the results you may obtain by using this map. This map is provided as is without express or implied warranties, including warranties of merchantability and fitness. In no event will LMIC be liable for any consequential, incidental or special damages, including any lost profits or lost savings, even if a LMIC representative has been advised of the possibility of such damages or any other claim by any third party.

For further assistance, or to order copies of this map, contact:
Land Management Information Center
856 Cedar Street
Centerline Building, Room 330
St. Paul, MN 55155
Phone: (651) 296-1211
FAX: (651) 296-1212
email: clearinghouse@lmi.state.mn.us

Distribution Information
This map was prepared in April, 1999. Both the map and the data used to create it are available from the Land Management Information Center at Minnesota Planning.
You may also view a generalized, interactive land use map of Minnesota, along with detailed information about land use data at:
<http://mapserver.lmic.state.mn.us/landuse>

