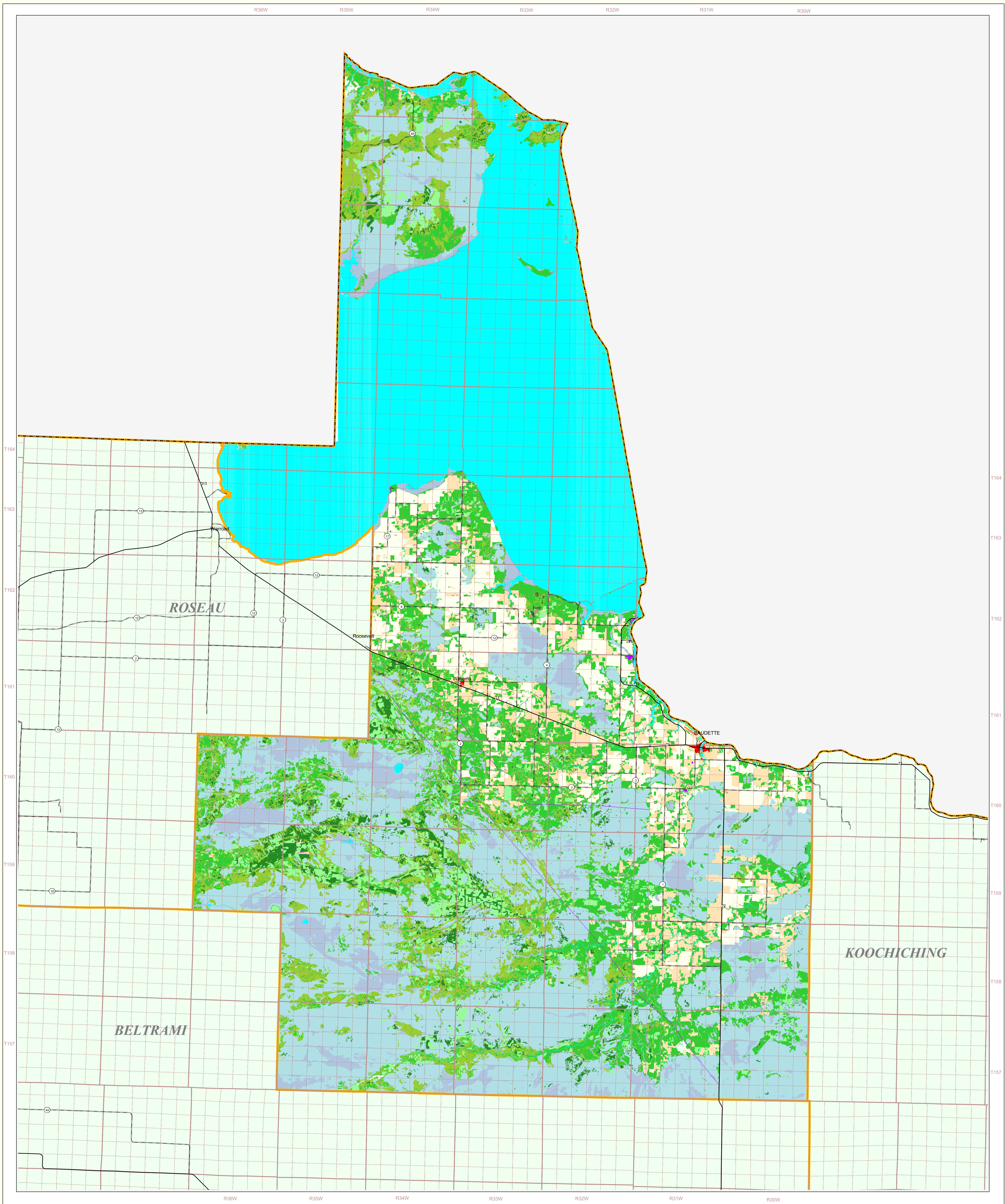


Lake Of The Woods County Land Use and Cover

State of Minnesota

August 30, 1996



MAP FEATURES

Land Use

- Urban/Industrial
- Farmsteads and Rural Residences
- Other Rural Developments
- Cultivated Land
- Grassland
- Shrubby Grassland
- Regeneration/Young Forest
- Mixed Forest
- Deciduous Forest
- Coniferous Forest
- Wetlands: Bogs
- Wetlands: Marsh and Fens
- Water
- Gravel Pits and Open Mines
- Bare Rock

Cities

- COUNTY SEAT
- Other Cities

Highways

- Interstate Highway
- U.S. Trunk Highway
- State Trunk Highway
- County State-Aid Highway (CSAH)

Public Land Survey

- State Boundary
- County Boundary
- Township and Range
- Section

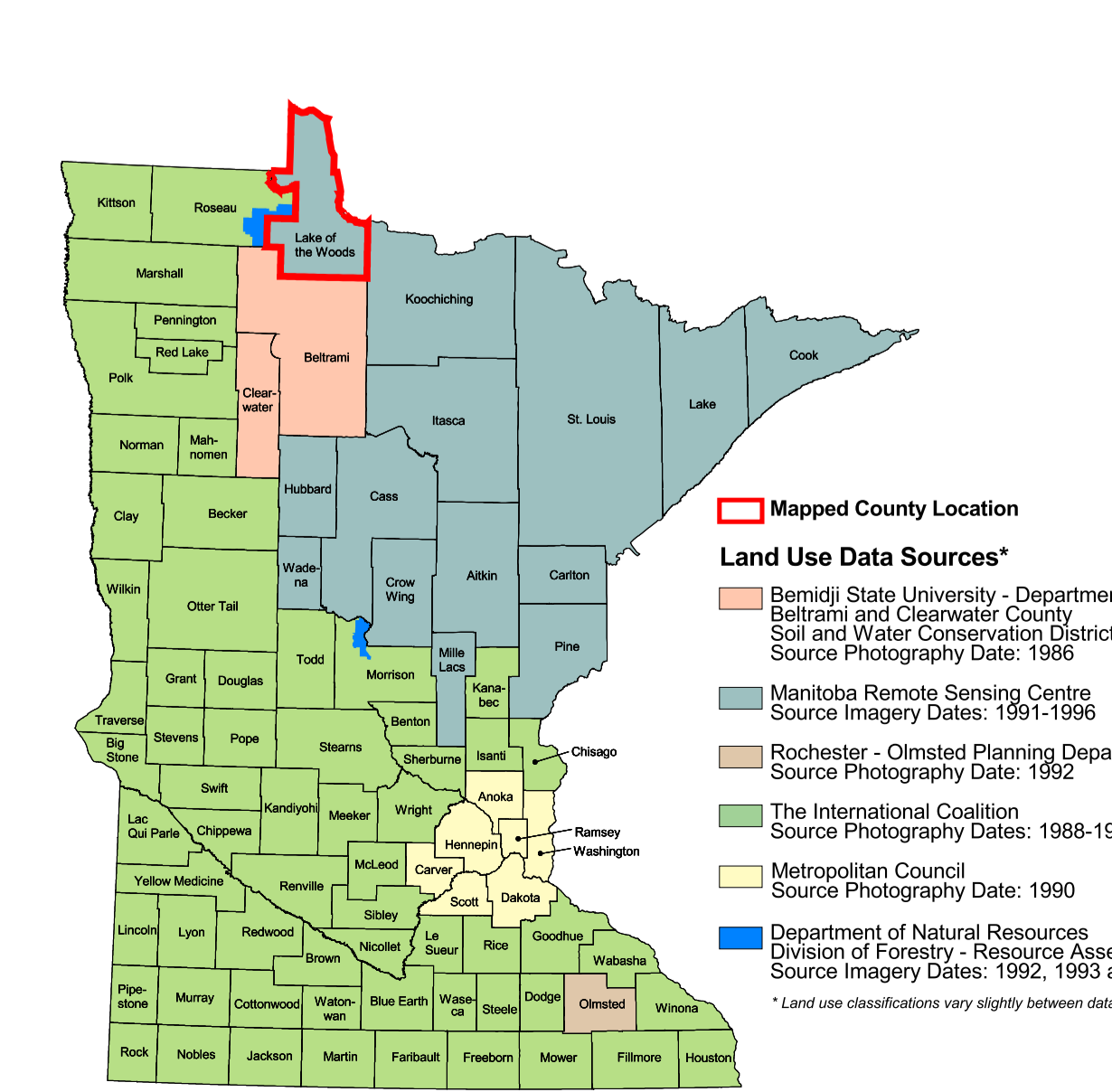
Data Sources

- 1. Manitoba Remote Sensing Centre, Source Imagery Dates: 1991-1996
- 2. 1:250,000 Scale Data, U.S. Bureau of the Census, 1996
- 3. Minnesota Department of Transportation, 1997-98

Lake Of The Woods County Land Use Statistics

Source: The Land Management Information Center (LMIC)

DESCRIPTION	ACRES	% ACRES
Urban/Industrial	368.4	<0.1
Farmsteads and Rural Residences	425.6	<0.1
Other Rural Developments	958.7	<0.1
Cultivated Land	60346.9	5.3
Grassland	81103.3	5.4
Shrubby Grassland	4648	0.4
Regeneration/Young Forest	33899.9	3
Mixed Forest	83878.3	7.4
Deciduous Forest	154302.5	13.6
Coniferous Forest	251336.6	22
Wetlands: Bogs	330396.5	29
Wetlands: Marsh and Fens	64226.3	6
Water	309226.5	27.2
Gravel Pits and Open Mines	1000.5	<0.1
Bare Rock	19.9	<0.1
TOTAL	1,137,811	100%



ABOUT THIS MAP

Data Sources: With the exception of roads, the land use/land cover categories displayed on this map were derived from 30 meter resolution Landsat Thematic Mapper satellite imagery, June 2, 4 and 5, 1996. Satellite imagery dates ranged from September, 1991 to August, 1996. The road category was created from road data found in the Minnesota Department of Transportation's 1:250,000-scale StateMap77 data set. Classifications were verified using 1:250,000 scale data and one-to-one ground truth data from high altitude photography (NAIP). U.S. Forest Service plot data were used to check the forest classifications for Lake County.

Data Interpretation and Computation: The Manitoba Remote Sensing Centre (MRSC) interpreted the Landsat imagery using a supervised maximum likelihood classification. These classification procedures were typically performed prior to an extensive manual verification/validating process using the NAIP photography. Traditional land use/cover categories (e.g., coniferous, mixed, deciduous forest classes) were processed by first developing a classification using related pure samples of field-collected data and then by performing a nearest classification around a tightly controlled confidence interval. Mixed classes falling outside of the pure class confidence interval were then assigned to a single mixed class.

MRSC used the USFS plot data to reclassify some Lake County coniferous areas to mixed forest. The "improvement forest" category was used here created by Minnesota Department of Natural Resources, Forests Division personnel, after which they revised the category definition to include some other forest on private lands.

This data exhibits a per class and overall classification accuracy of not less than 95 percent.

On-line documentation: <http://lucy.limc.state.ma.us/landuse.htm>

Credits and Acknowledgements

Data collection and interpretation supported by the Minnesota Future Resources Fund as recommended by the Legislative Commission on Minnesota Resources (LCMR).

The following groups also participated over an extended period:

- Linnett Geosystems, Winnipeg
- The Manitoba Remote Sensing Centre, Winnipeg
- Minnesota Department of Natural Resources
- University of Minnesota - Department of Forest Resources
- Widseth, Smith and Nolting

Map Projection: UTM, Extended Zone 15
Datum: NAD83

Liability statement

The Land Management Information Center (LMIC) does not warrant the results you may obtain by using this map. This map is provided "as is" without recourse or implied warranties, including warranties of merchantability and fitness. In no event will LMIC be liable for any consequential, incidental or special damages, including any lost profits or lost savings, even if a LMIC representative has been advised of the possibility of such damages or any other claim by any third party.

Distribution Information

This map was prepared in April, 1996. Both the map and the data used to create it are available from the Land Management Information Center at Minnesota Planning.

You may also view a generalized, interactive land use map of Minnesota, along with detailed information about land use data at:

<http://mapserver.limc.state.ma.us/landuse>

For further assistance, or to order copies of this map, contact:

Land Management Information Center
658 Cedar Street
Centennial Building, Room 330
St. Paul, MN 55155

Phone: (651) 296-1211
FAX: (651) 296-1213
E-Mail: clearinghouse@mnplanning.state.ma.us

