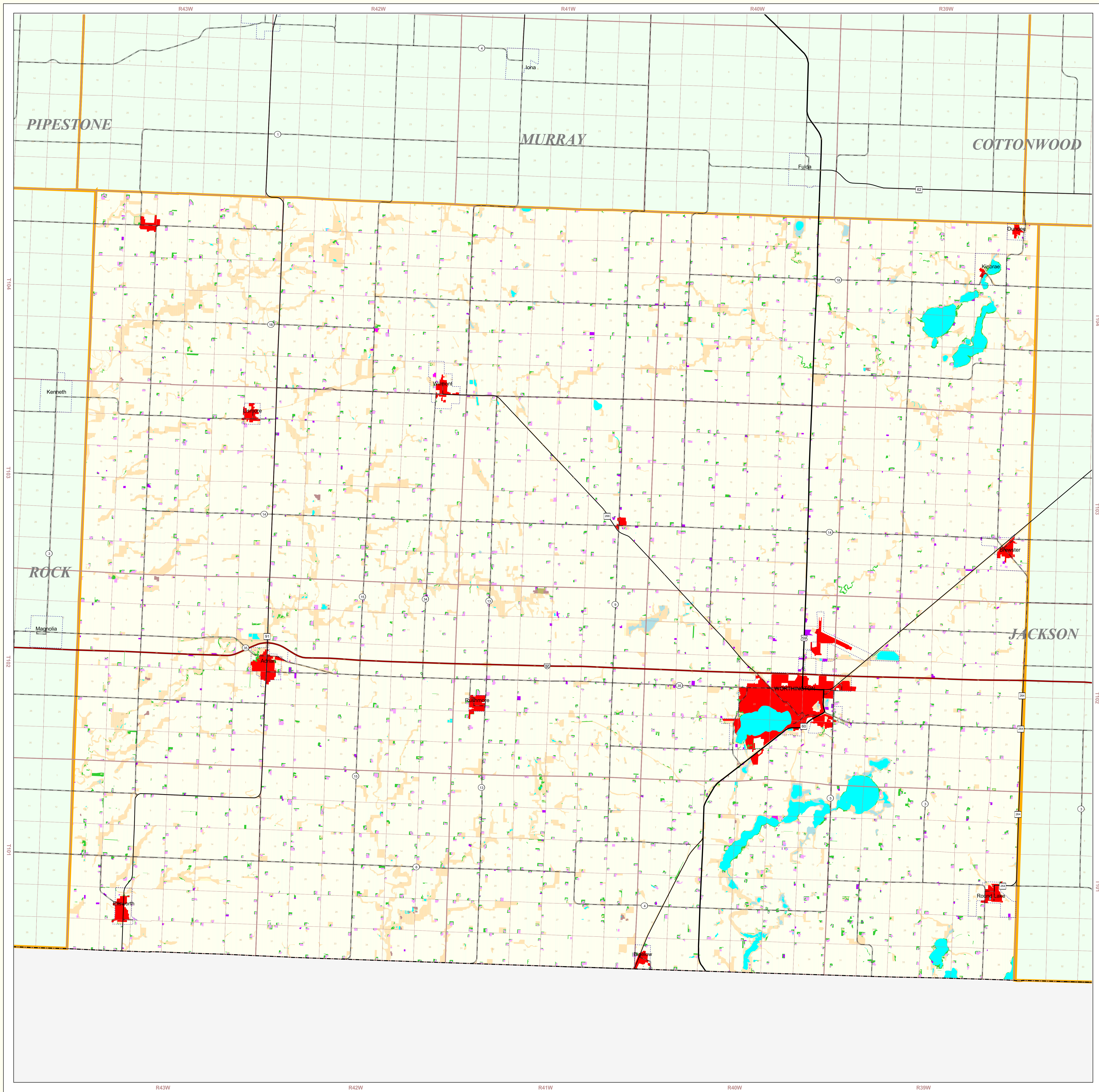


# Nobles County Land Use and Cover

State of Minnesota  
1988 - 1990



## MAP FEATURES

- Land Use\***
- Urban and Industrial
  - Farmsteads and Rural Residences
  - Rural Residential Development Complexes
  - Other Rural Developments
  - Cultivated Land
  - Grassland
  - Grassland-Shrub-Tree Complex (Deciduous)
  - Grassland-Shrub-Tree Complex (Coniferous)
  - Deciduous Forest
  - Coniferous Forest
  - Water
  - Wetlands
  - Gravel Pits and Open Mines
  - Bare Rock
  - Exposed Soil, Sandbars, and Sand Dunes
  - Unclassified/Unlabeled/Outside State or County

- Cities\***
- COUNTY SEAT
  - Other Cities
- Highways\***
- Interstate Highway
  - U.S. Trunk Highway
  - State Trunk Highway
  - County State-Aid Highway (CSAH)
- Public Land Survey\***
- State Boundary
  - County Boundary
  - Township & Range
  - Section
- T34 Township**  
**R25W Range & Direction**

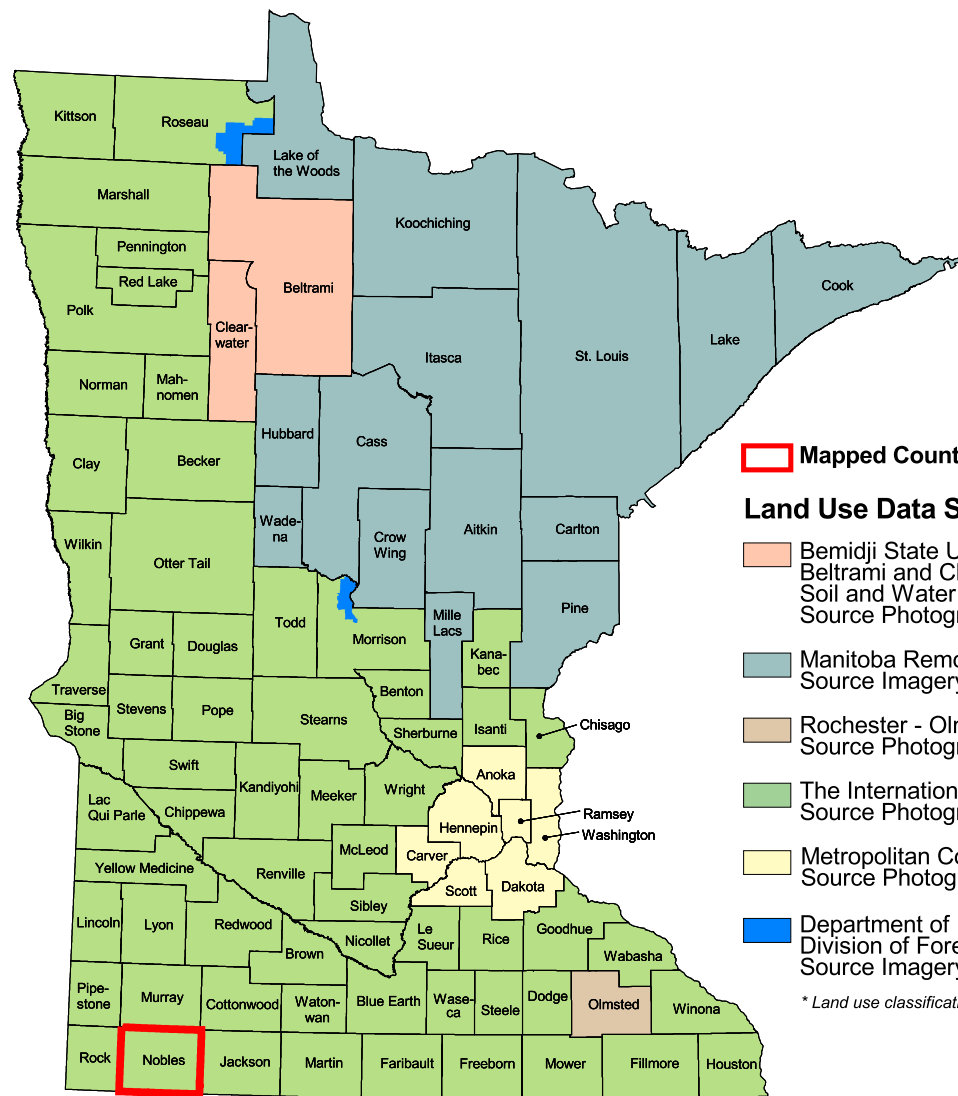
## Nobles County Land Use Statistics

Source: The Land Management Information Center (LMIC)

DESCRIPTION	ACRES	% ACRES
Urban and Industrial	671.5	0.3
Farmsteads and Rural Residences	650.0	0.3
Rural Residential Development Complexes	20.0	<0.1
Other Rural Developments	20.0	0.1
Cultivated Land	207,049.9	88.4
Grassland	1,111.0	<0.1
Grassland-Shrub-Tree Complex (Deciduous)	304,18.8	8.8
Grassland-Shrub-Tree Complex (Coniferous)	158.0	<0.1
Deciduous Forest	5,845.0	1.3
Coniferous Forest	4876.0	1.3
Water	93.0	0.2
Wetlands	132.0	<0.1
Gravel Pits and Open Mines	20.0	<0.1
Bare Rock	20.0	<0.1
Exposed Soil	20.0	<0.1
Unclassified/Unlabeled/Outside State or County	11,368.0	100%

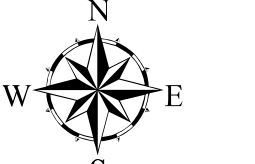
## Data Sources

- The International Geobotanical Survey (IGS) 1988-1990
- U.S. Bureau of the Census, 1990
- Minnesota Department of Transportation, 1997-98
- Produced by the Minnesota Land Management Information Center from U.S. Geological Survey (USGS) 1:100,000 scale, 20m resolution maps published between 1977 and 1986



## Land Use Data Sources\*

- Minnesota Department of Agriculture, Department of Geography, and the Minnesota Department of Natural Resources, 1988-1990
- Minnesota Department of Natural Resources, 1988-1990
- Minnesota Department of Natural Resources, 1988-1990
- Minnesota Department of Natural Resources, 1988-1990
- Minnesota Department of Natural Resources, 1988-1990



## ABOUT THIS MAP

**Data Sources:** The land use / land cover categories displayed on this map were derived from sources that included the U.S. Department of Agriculture, Agricultural Stabilization and Conservation Service's (ASCS) low altitude, section-centered, 35mm color aerial photography taken during 1988-1990 and U.S. Fish and Wildlife Service National Wetlands Inventory (NWI) 1:24,000-scale field maps. Landsat satellite images (date unrecorded) were used to verify the classifications.

**Data Interpretation and Computerization:** The project was coordinated by The International Coalition for Land and Water Stewardship in the Red River Basin. Land use / land cover interpretation was performed by DPA International. The smallest area interpreted was approximately 2.5 acres.

Land use / land cover information was transcribed on to stable-base mylars registered to U.S. Geological Survey 1:24,000-scale topographic maps and then digitized by DPA International or Alexandria Technical College staff. Minnesota Department of Natural Resources MIS Bureau staff then joined the digitized files together to create county coverages.

On-line documentation: <http://lucy.lmic.state.mn.us/metadata/use89.html>

## Credits and Acknowledgements

Data collection and interpretation supported by the Minnesota Future Resources Fund as recommended by the Legislative Commission on Minnesota Resources (LCMR).

The following groups also participated over an extended period:  
Alexandra Technical College - GIS Program  
DPA International  
The International Coalition  
Minnesota Board of Water and Soil Resources  
Minnesota Department of Natural Resources  
Minnesota Land Management Information Center  
North Dakota State University - Agricultural Engineering Department  
The Red River Management Board  
University of Minnesota - Department of Forest Resources  
University of North Dakota - Geography Department  
Wildlife, Smith and Notting

## Liability statement

The Land Management Information Center (LMIC) does not warrant the results you may obtain by using this map. This map is provided "as is" without express or implied warranties, including warranties of merchantability and fitness. In no event will LMIC be liable for any consequential, incidental or special damages, including any lost profits or lost savings, even if a LMIC representative has been advised of the possibility of such damages or any other claim by any third party.

## Distribution information

This map was prepared in April, 1999. Both the map and the data used to create it are available from the Land Management Information Center at Minnesota Planning.

You may also view a generalized, interactive land use map of Minnesota, along with detailed information about land use data at:

<http://mapserver.lmic.state.mn.us/landuse>

For further assistance, or to order copies of this map, contact:  
Land Management Information Center  
658 Cedar Street  
Centennial Building, Room 330  
St. Paul, MN 55155

Phone: (651) 296-1211  
FAX: (651) 296-1212  
E-Mail: [clearinghouse@mplanning.state.mn.us](mailto:clearinghouse@mplanning.state.mn.us)

