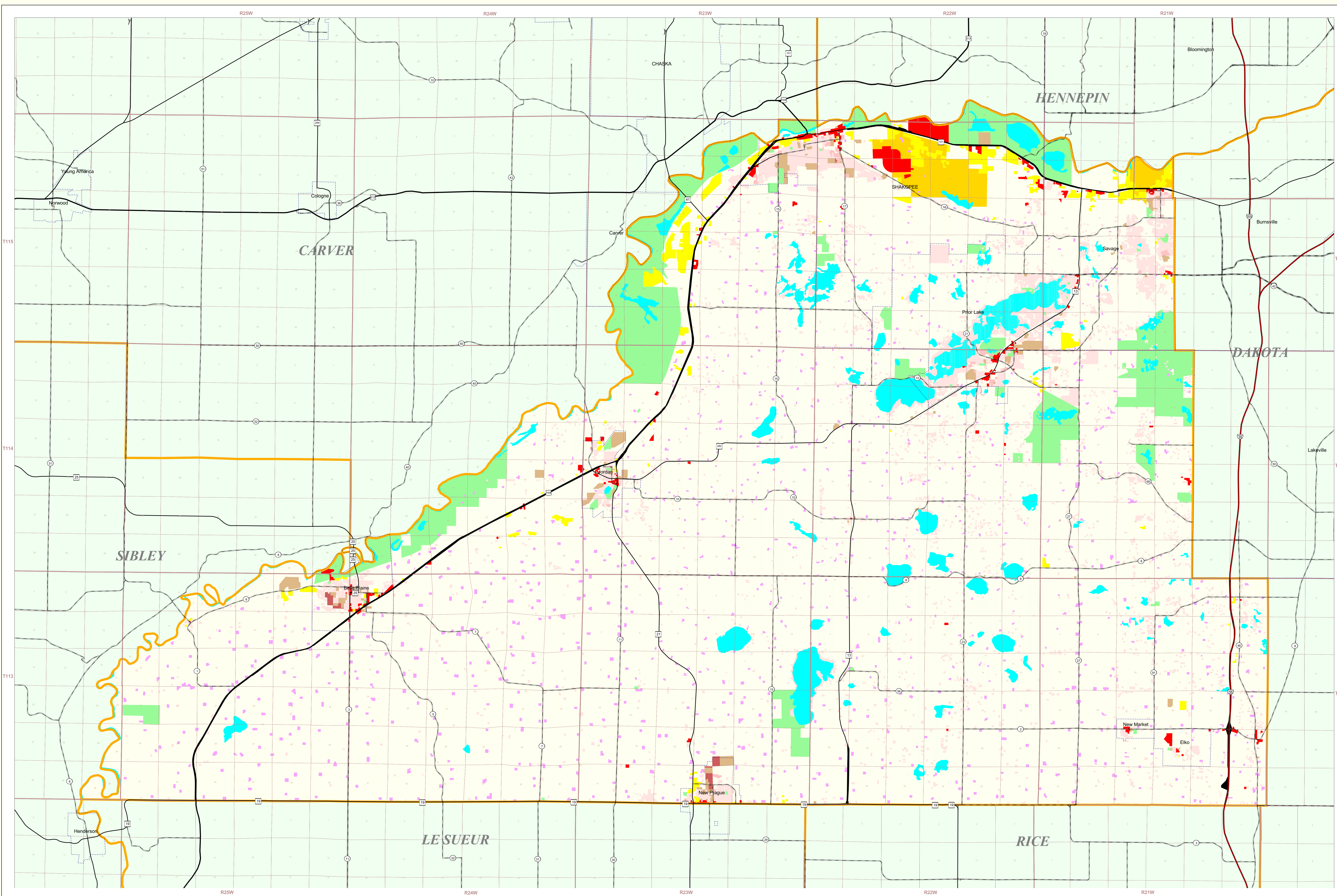


Scott County Land Use and Cover

State of Minnesota

1990



MAP FEATURES

Land Use*	Cities
Single Family Residential	COUNTY SEAT
Multi-Family Residential	Other Cities
Farmsteads Municipal Boundary
Commercial	----- Interstate Highway
Industrial	----- U.S. Trunk Highway
Industrial Parks not Developed	----- State Trunk Highway
Vacant/Agricultural	----- County State-Aid Highway (CSAH)
Parks & Recreation Areas	Public Land Survey*
Open Water Bodies	----- State Boundary
Public-Semi Public	----- County Boundary
Public & Semi-Public Vacant	----- Township & Range
Airports	----- Section
Major Four Lane Highways	T34 Township
	R29W Range & Direction

Data Sources

- Generalized Land Use for the Twin Cities Metropolitan Area, Metropolitan Council, 1990
- 1988/1990 Land Use, U.S. Bureau of Census, 1995
- Minnesota Department of Transportation, 1987/88
- Produced by the Minnesota Land Management Information Center for the U.S. Geological Survey, 1990

Scott County Land Use Statistics

Source: The Land Management Information Center (LMIC)

DESCRIPTION	ACRES	% ACRES
Single Family Residential	19086.1	45.8
Multi-Family Residential	200.4	0.5
Farmsteads	8237.9	1.4
Commercial	1314.5	3.0
Industrial	245.8	0.6
Industrial Parks not Developed	1964.5	4.5
Vacant/Agricultural	19170.3	43.2
Parks & Recreation Areas	12583.4	28.3
Open Water Bodies	8548.2	19.1
Public-Semi-Public	1179.4	2.6
Public & Semi-Public Vacant	127.8	< 0.1
Airports	0.0	0.0
Major Four Lane Highways	1201.2	2.7
TOTAL	255,315	100%

Land Use Data Sources*

- Bentley State University - Department of Geography
- Beltz and Cleaver County Soil and Water Conservation Districts
- Source Imagery Date: 1986
- Minnesota Remote Sensing Center
- Source Imagery Date: 1981-1986
- Rochester - Olmsted Planning Department
- Source Imagery Date: 1988-1990
- The International Coalition
- Source Imagery Date: 1988-1990
- Metropolitan Council
- Source Imagery Date: 1990
- Department of Natural Resources
- Division of Forestry - Resource Assessment
- Source Imagery Date: 1992, 1993 and 1996

*Land use classification may vary slightly between data sources.

Scale: 0 to 4 Miles, 0 to 4 Kilometers

ABOUT THIS MAP

Data Sources: The land use / land cover categories displayed on this map were derived from rectified air photos (1:38,400) taken on May 4 or May 5, 1990. Reverse directories, non-residential building permits and field checks were used when a land use could not be determined from the photos.

Data Interpretation and Computerization: First, air photos were rectified by Markward to match a photo grid used by the Metropolitan Council. Corners of the air photo grid and the Minnesota Department of Transportation's digital road centerline layer (1:24,000) were used to register the photos. The photos were then interpreted by Metropolitan Council staff. Next, mylars of 1980 and 1984 land use (1:50,000) were overlain on the photos and changes were delineated. Corrections to the earlier data sets that had been submitted by cities and townships were also incorporated. Reverse directories, non-residential building permits and field checks were used when land use could not be determined from the photos. The updated mylars were digitized in a vector format as 251 individual tiles. The tiles were then edge-matched and registration corrections made using the road centerlines.

The land use / land cover data was compiled to meet National Map Accuracy Standards at the 1:24,000 scale (within approximately 16.5 meters of actual location), although some instances show offsets as large as 70 meters.

On-line documentation: <http://lucv.lmic.state.mn.us/metadata/luc90.html>

Credits and Acknowledgements

Seven-county metropolitan land use data provided by:
Metropolitan Council

For further assistance, or to order copies of this map, contact:
Land Management Information Center
658 Cedar Street
Centerennial Building, Room 330
St. Paul, MN 55155
Phone: (651) 296-1211
FAX: (651) 296-1212
E-Mail: clearinghouse@lmiplan.state.mn.us

Liability Statement
The Land Management Information Center (LMIC) does not warrant the results you may obtain by using this map. This map is provided as is without express or implied warranties, including warranties of merchantability and fitness. In no event will LMIC be liable for any consequential, incidental or special damages, including any lost profits or lost savings, even if a LMIC representative has been advised of the possibility of such damages or any other claim by any third party.

Distribution Information
This map was prepared in April, 1999. Both the map and the data used to create it are available from the Land Management Information Center at Minnesota Planning.

You may also view a generalized, interactive land use map of Minnesota, along with detailed information about land use data at:
<http://mapserver.lmic.state.mn.us/landuse>