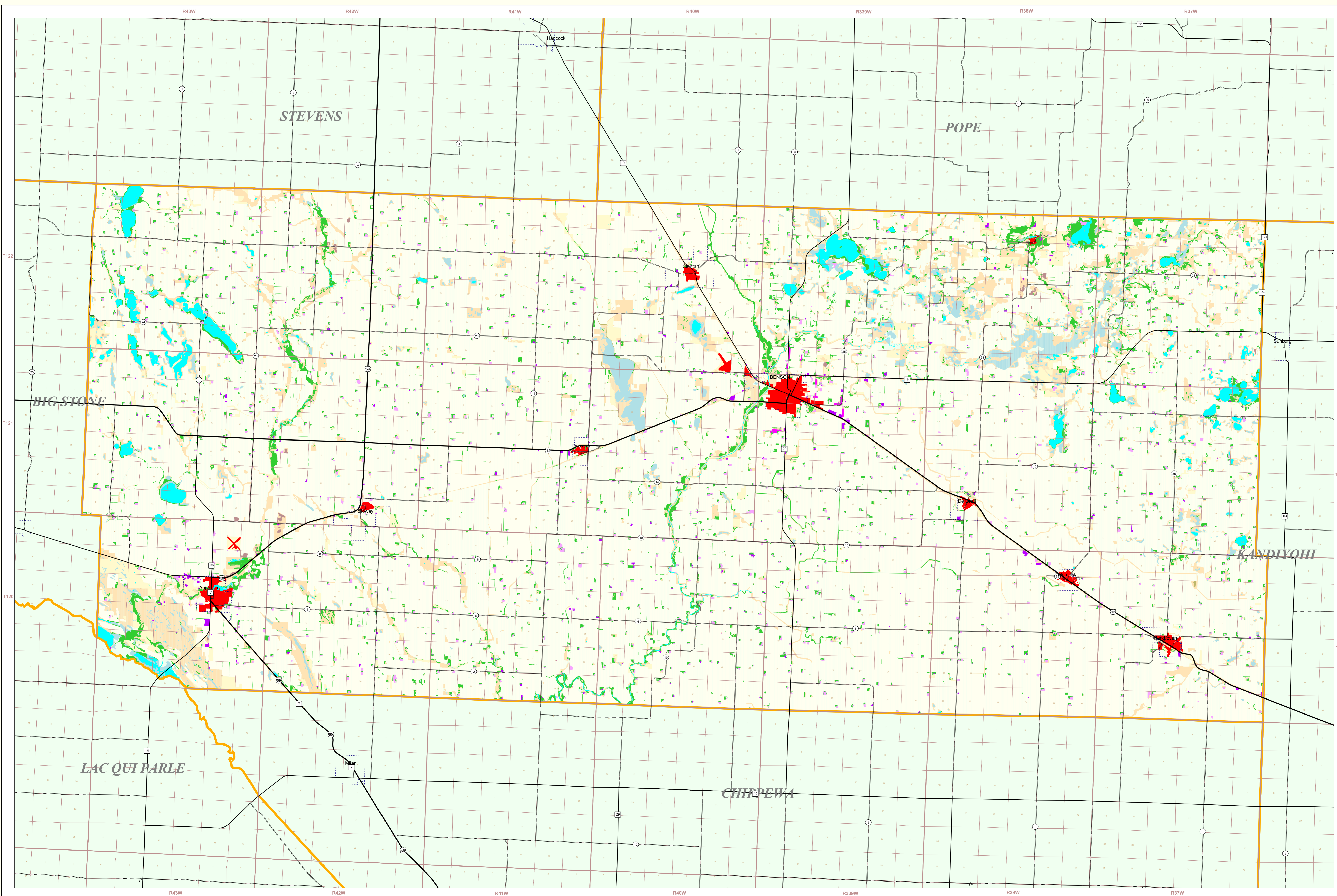


Swift County Land Use and Cover

State of Minnesota

1988 - 1990



MAP FEATURES

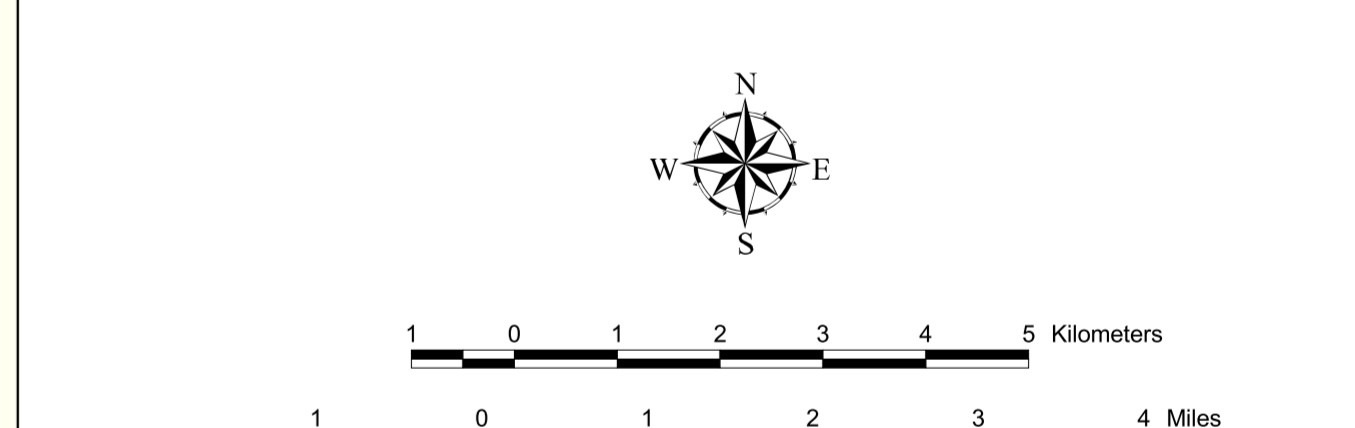
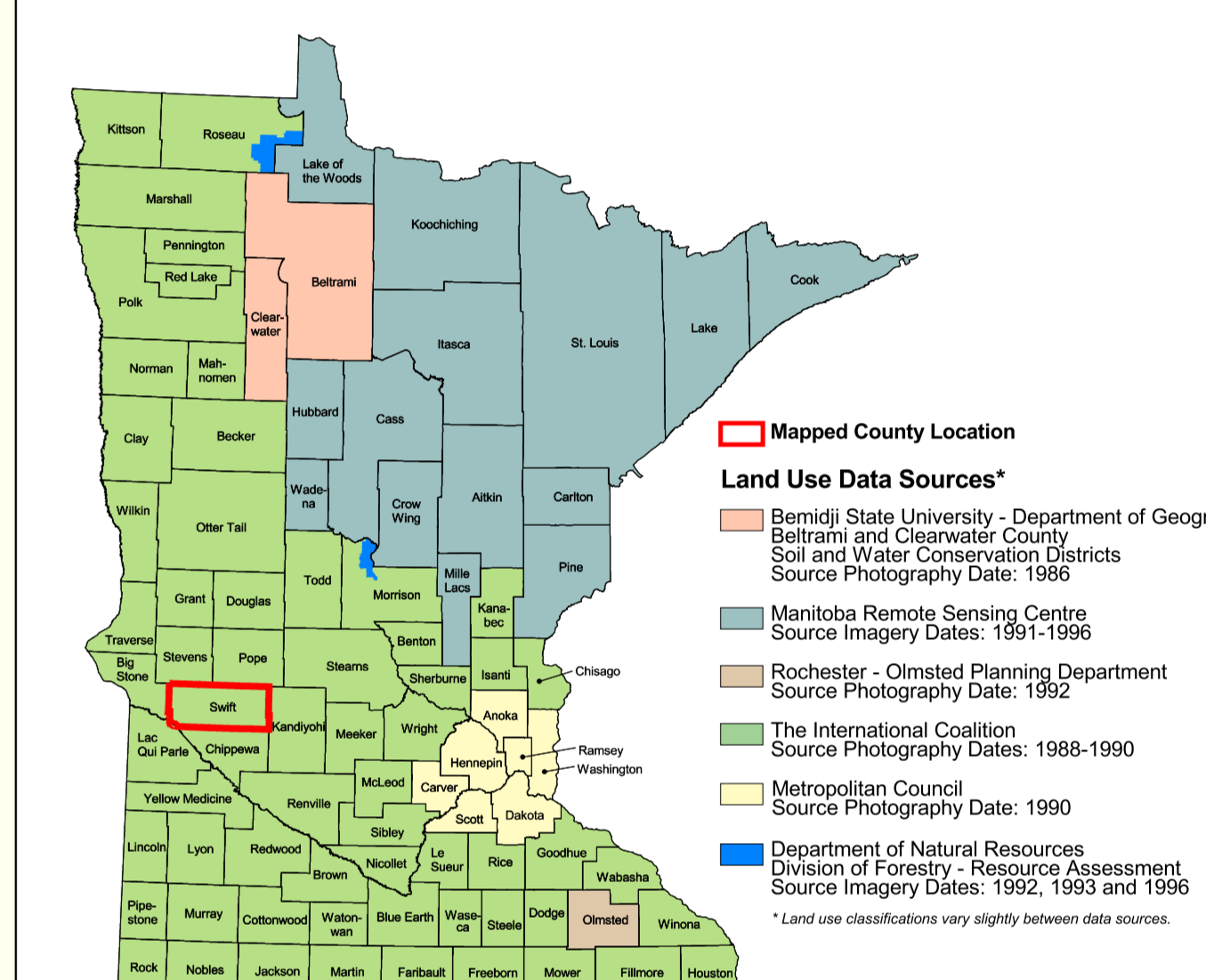
Land Use* Urban and Industrial Farmsteads and Rural Residences Rural Residential Development Complexes Other Rural Developments Cultivated Land Transitional Agricultural Land Grassland Grassland-Shrub-Tree Complex (Deciduous) Grassland-Shrub-Tree Complex (Coniferous) Deciduous Forest Coniferous Forest Water Wetlands Gravel Pits and Open Mines Bare Rock Exposed Soil, Sandbars, and Sand Dunes Unclassified/Unlabeled/Outside State or County	CITIES COUNTY SEAT Other Cities Municipal Boundary Highways Interstate Highway U.S. Trunk Highway State Trunk Highway County State-Aid Highway (CSAH) Public Land Survey State Boundary Township & Range Section Township Range & Direction
--	---

1 The International Coalition
 Source: Photogrammetry Dates: 1988-1990
 2 Topographic Color Files
 U.S. Bureau of the Census, 1995
 3 Minnesota Department of Transportation, 1997-98
 4 Provided by the Minnesota Land Management Information Center from U.S. Geological Survey (1988-1990), U.S. Geological Survey (1992), U.S. Geological Survey (1993), and U.S. Geological Survey (1996) maps published between 1977 and 1996.

Swift County Land Use Statistics

Source: The Land Management Information Center (LMIC)

DESCRIPTION	ACRES	% ACRES
Unclassified/Unlabeled/Outside State or County	11,898	100%
Urban and Industrial	2,077	17%
Farmsteads and Rural Residences	1,705	14%
Rural Residential Development Complexes	1,000	8%
Other Rural Developments	4,000	34%
Cultivated Land	1,000	8%
Transitional Agricultural Land	1,000	8%
Grassland	1,000	8%
Grassland-Shrub-Tree Complex (Deciduous)	1,000	8%
Grassland-Shrub-Tree Complex (Coniferous)	1,000	8%
Deciduous Forest	1,000	8%
Coniferous Forest	1,000	8%
Water	1,000	8%
Wetlands	1,000	8%
Gravel Pits and Open Mines	1,000	8%
Bare Rock	1,000	8%
Exposed Soil, Sandbars, and Sand Dunes	1,000	8%



ABOUT THIS MAP

Data Sources: The land use / land cover categories displayed on this map were derived from sources that included the U. S. Department of Agriculture, Agricultural Stabilization and Conservation Service's (ASCS) low altitude, section-centered, 35mm color aerial photography taken during 1988-1990 and U.S. Fish and Wildlife Service National Wetlands Inventory (NWI) 1:24,000-scale field maps. Landsat satellite images (date unrecorded) were used to verify the classifications.

Data Interpretation and Computerization: The project was coordinated by The International Coalition for Land and Water Stewardship in the Red River Basin. Land use / land cover interpretation was performed by DPA International. The smallest area interpreted was approximately 2.5 acres.

Land use / land cover information was transcribed on to stable-base mylars registered to U.S. Geological Survey 1:24,000-scale topographic maps and then digitized by DPA International or Alexandria Technical College staff. Minnesota Department of Natural Resources MIS Bureau staff then joined the digitized files together to create county coverages.

On-line documentation: <http://lucy.lmic.state.mn.us/metadata/use89.html>

Credits and Acknowledgements

Data collection and interpretation supported by the Minnesota Future Resources Fund as recommended by the Legislative Commission on Minnesota Resources (LCMR).

The following groups also participated over an extended period:
 Alexandria Technical College - GIS Program
 DPA International
 The International Coalition
 Minnesota Board of Water and Soil Resources
 Minnesota Department of Natural Resources
 Minnesota Land Management Information Center
 North Dakota State University - Agricultural Engineering Department
 The Red River Management Board
 University of Minnesota - Department of Forest Resources
 University of North Dakota - Geography Department
 Widseth, Smith and Notling

Map Projection: UTM, Extended Zone 15
Datum: NAD83

Liability Statement
 The Land Management Information Center (LMIC) does not warrant the results you may obtain by using this map. This map is provided as is without express or implied warranties, including warranties of merchantability and fitness. In no event will LMIC be liable for any consequential, incidental or special damages, including any lost profits or lost savings, even if a LMIC representative has been advised of the possibility of such damages or any other claim by any third party.

For further assistance, or to order copies of this map, contact:
 Land Management Information Center
 650 Cedar Street
 Centennial Building, Room 330
 St. Paul, MN 55155
 Phone: (651) 296-1211
 FAX: (651) 296-1212
 email: clearinghouse@lmic.state.mn.us

Distribution Information
 This map was prepared in April, 1999. Both the map and the data used to create it are available from the Land Management Information Center at Minnesota Planning.
 You may also view a generalized, interactive land use map of Minnesota, along with detailed information about land use data at:
<http://mapserver.lmic.state.mn.us/landuse>

