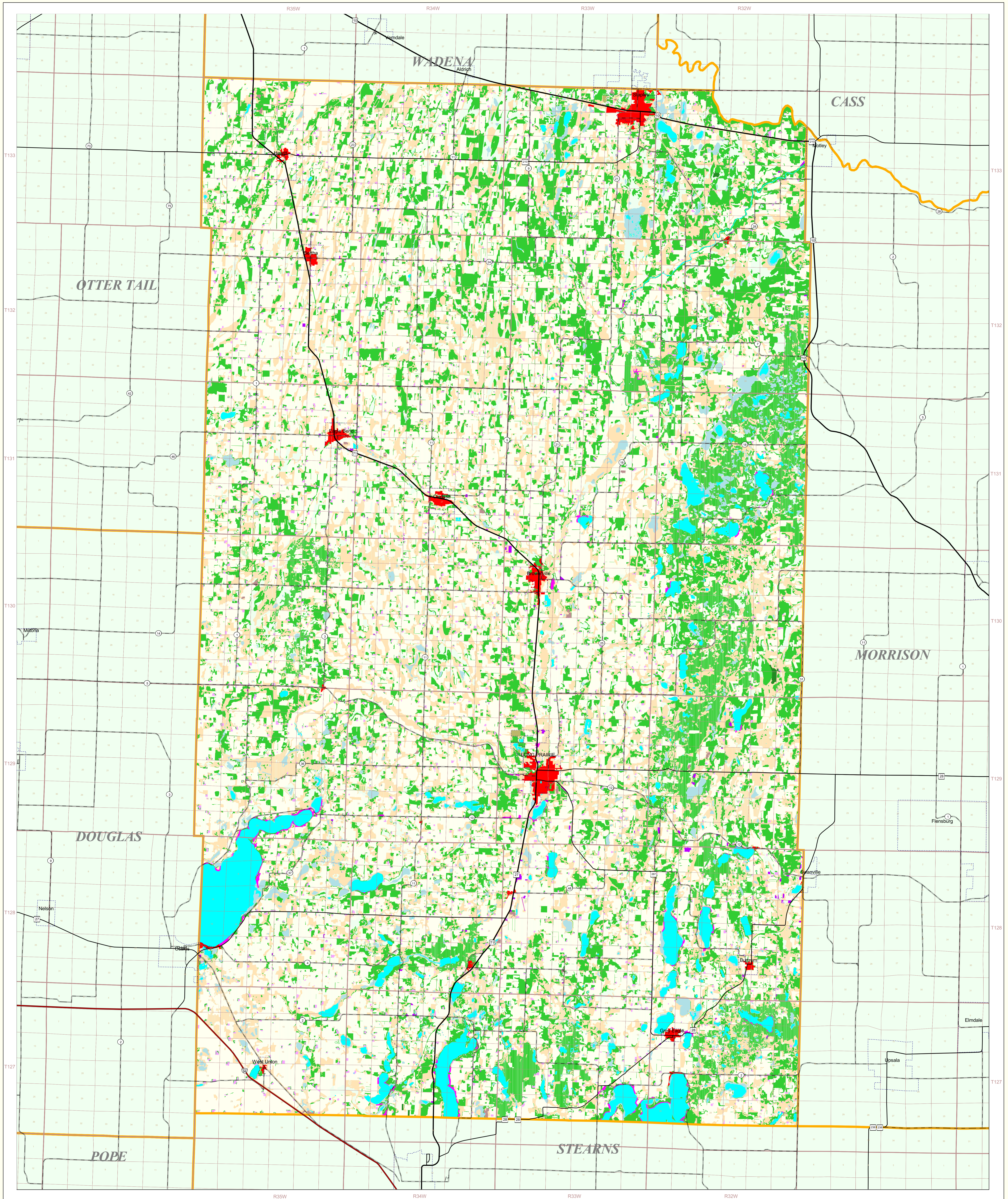


# Todd County Land Use and Cover

State of Minnesota  
1988 - 1990



## MAP FEATURES

- Land Use\***
- Urban and Industrial
  - Farmsteads and Rural Residences
  - Rural Residential Development Complexes
  - Other Rural Developments
  - Cultivated Land
  - Transitional Agricultural Land
  - Grassland
  - Grassland-Shrub-Tree Complex (Deciduous)
  - Grassland-Shrub-Tree Complex (Coniferous)
  - Deciduous Forest
  - Coniferous Forest
  - Water
  - Wetlands
  - Gravel Pits and Open Mines
  - Bare Rock
  - Exposed Soil, Sandbars, and Sand Dunes
  - Unclassified/Unlabeled/Outside State or County
- Cities\***
- COUNTY SEAT
  - Other Cities
- Highways\***
- Interstate Highway
  - U.S. Trunk Highway
  - County State-Aid Highway (CSAH)
- Public Land Survey\***
- Township & Range Section
  - County Boundary
  - State Boundary
  - T34 Township
  - R25W Range & Direction

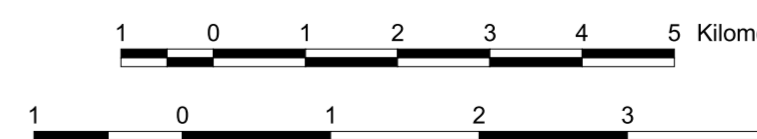
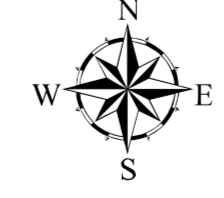
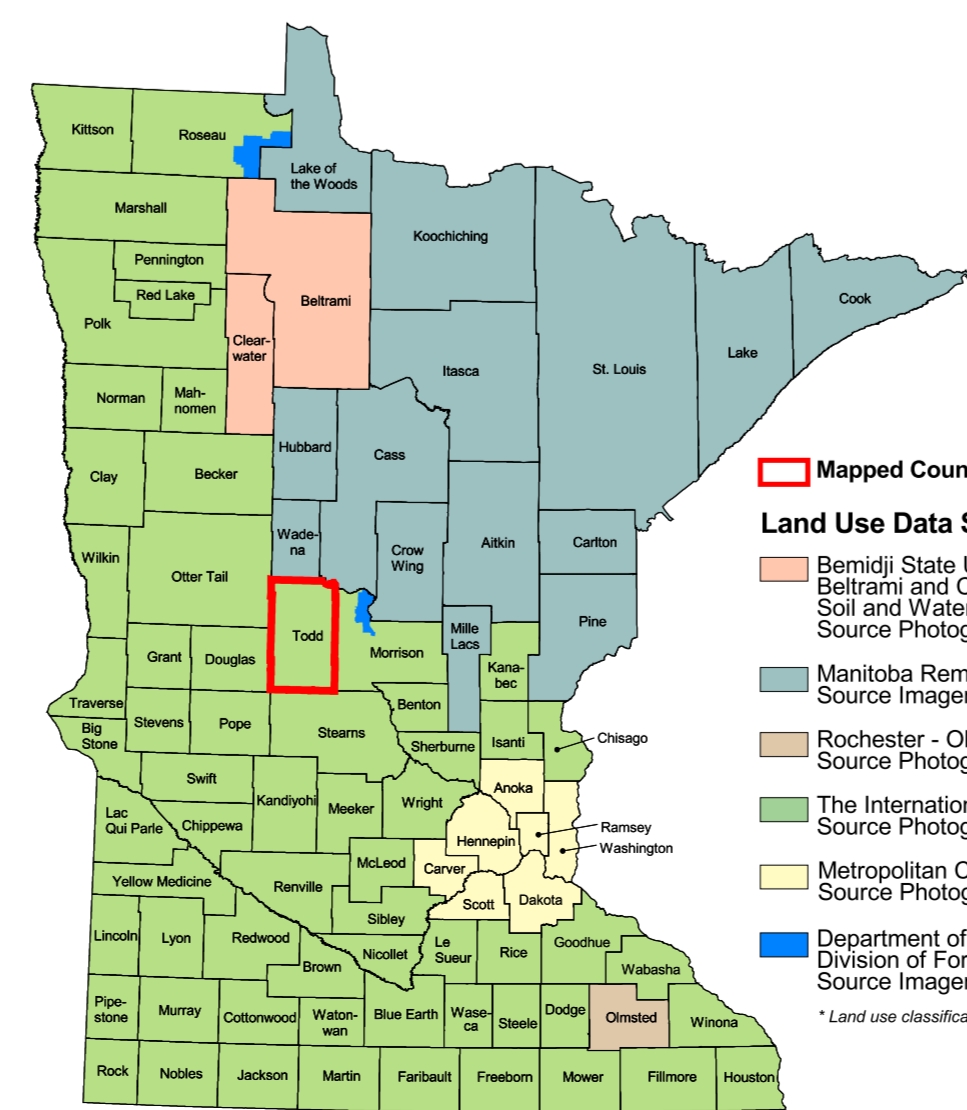
## Todd County Land Use Statistics

Source: The Land Management Information Center (LMIC)

DESCRIPTION	ACRES	% ACRES
Urban and Industrial	268	0.1
Farmsteads and Rural Residences	36,514	1.9
Rural Residential Development Complexes	592	0.0
Other Rural Developments	2,217	0.1
Cultivated Land	222,714	11.2
Transitional Agricultural Land	137,174	6.7
Grassland	1,375,561	66.4
Grassland-Shrub-Tree Complex (Deciduous)	1,399,797	67.7
Grassland-Shrub-Tree Complex (Coniferous)	1,399,797	67.7
Deciduous Forest	1,399,797	67.7
Coniferous Forest	1,399,797	67.7
Water	1,399,797	67.7
Wetlands	1,399,797	67.7
Gravel Pits and Open Mines	1,399,797	67.7
Bare Rock	1,399,797	67.7
Exposed Soil, Sandbars, and Sand Dunes	1,399,797	67.7
Unclassified/Unlabeled/Outside State or County	1,399,797	67.7
<b>TOTAL</b>	<b>2,911,623</b>	<b>100%</b>

## Data Sources

- \* The International Geosphere and Biosphere Programme (IGBP) Global Terrestrial Observatories System (GTOS) 1:50,000 scale, 30-minute coverage maps produced between 1977 and 1986.
- \* Produced by the Minnesota Land Management Information Center from U.S. Geological Survey (USGS) 1:250,000 scale, 30-minute coverage maps produced between 1977 and 1986.
- \* Minnesota Department of Transportation, 1997-98.



## ABOUT THIS MAP

**Data Sources:** The land use / land cover categories displayed on this map were derived from sources that included the U.S. Department of Agriculture, Agricultural Stabilization and Conservation Service's (ASCS) low altitude, section-centered, 35mm color aerial photography taken during 1988-1990 and U.S. Fish and Wildlife Service National Wetlands Inventory (NWI) 1:24,000-scale field maps. Landsat satellite images (date unrecorded) were used to verify the classifications.

**Data Interpretation and Computerization:** The project was coordinated by The International Coalition for Land and Water Stewardship in the Red River Basin. Land use / land cover interpretation was performed by DPA International. The smallest area interpreted was approximately 2.5 acres.

**Land use / land cover information was transcribed on to stable-base mylar registered to U.S. Geological Survey 1:24,000-scale topographic maps and then digitized by DPA International or Alexandria Technical College staff. Minnesota Department of Natural Resources MIS Bureau staff then joined the digitized files together to create county coverages.**

**On-line documentation:** <http://lucy.lmic.state.mn.us/metadata/fuse89.html>

## Credits and Acknowledgements

Data collection and interpretation supported by the Minnesota Future Resources Fund as recommended by the Legislative Commission on Minnesota Resources (LCMR).

The following groups also participated over an extended period:

- Alexandria Technical College - GIS Program
- DPA International
- The International Coalition
- Minnesota Board of Water and Soil Resources
- Minnesota Department of Natural Resources
- Minnesota Land Management Information Center
- North Dakota State University - Agricultural Engineering Department
- The Red River Management Board
- University of Minnesota - Department of Forest Resources
- University of North Dakota - Geography Department
- Waters, Smith and Nelling

**Map Projection:** UTM, Extended Zone 15  
**Datum:** NAD83

**Liability Statement**  
The Land Management Information Center (LMIC) does not warrant the results you may obtain by using this map. This map is provided as is without express or implied warranties, including warranties of merchantability and fitness. In no event will LMIC be liable for any consequential, incidental or special damages, including any lost profits or lost savings, even if a LMIC representative has been advised of the possibility of such damages or any other claim by any third party.

**Distribution Information**  
This map was prepared in April, 1999. Both the map and the data used to create it are available from the Land Management Information Center at Minnesota Planning.

You may also view a generalized, interactive land use map of Minnesota, along with detailed information about land use data at:

<http://mapserver.lmic.state.mn.us/landuse>

## For further assistance, or to order copies of this map, contact:

Land Management Information Center  
608 Cedar Street  
Centennial Building, Room 330  
St. Paul, MN 55155

Phone: (651) 296-1211  
FAC: (651) 296-1212  
E-Mail: [cearings@mnplanning.state.mn.us](mailto:cearings@mnplanning.state.mn.us)

