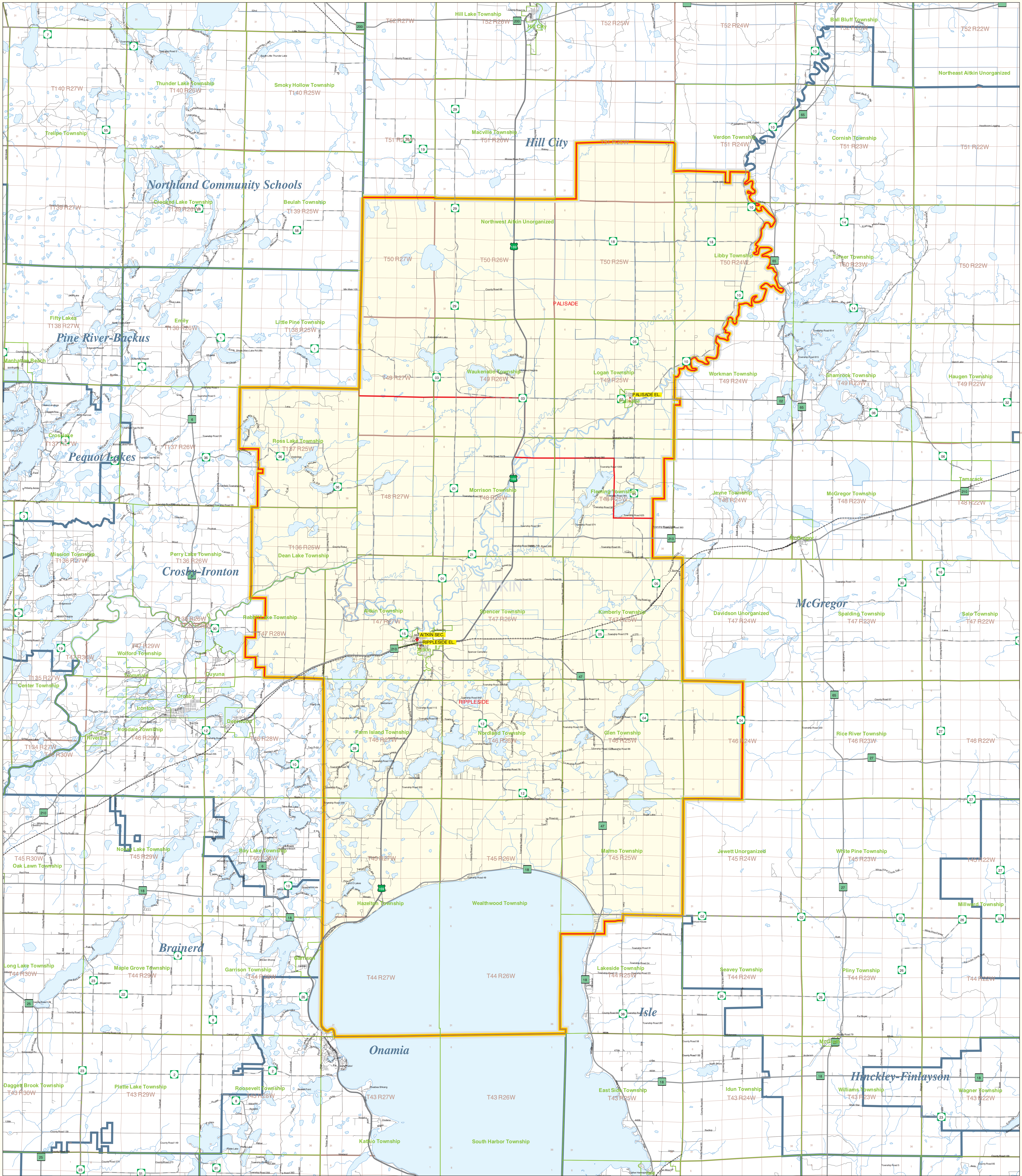


Aitkin School District Number 1

Public School District Attendance Areas and Educational Facility Locations



Public Educational Facilities or Programs

- * Elementary
- * Middle/Junior
- ♦ High/Secondary

Public School Attendance Areas

- Elementary School Attendance Area **ELEM**
- Middle School Attendance Area **MIDD**
- High School Attendance Area **HIGH**

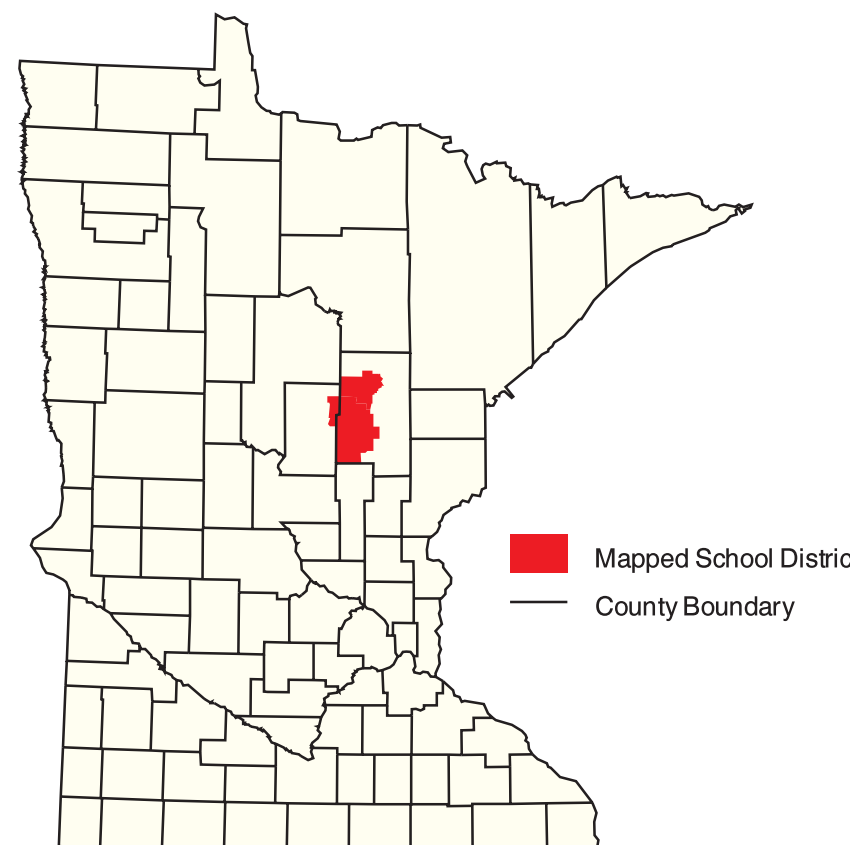
Public School Districts

- ISD 1
- Other

Other Features

- Interstate Highway
- U.S. Highway
- State Highway
- County Highway
- Road/Street
- Railroad
- Stream
- Lake/Pond
- Minor Civil Division (Cities, Townships and Unorganized areas)
- Public Land Survey Township / Range
- Public Land Survey Section

SCHOOL DISTRICT LOCATION IN THE STATE OF MINNESOTA



Data Sources:

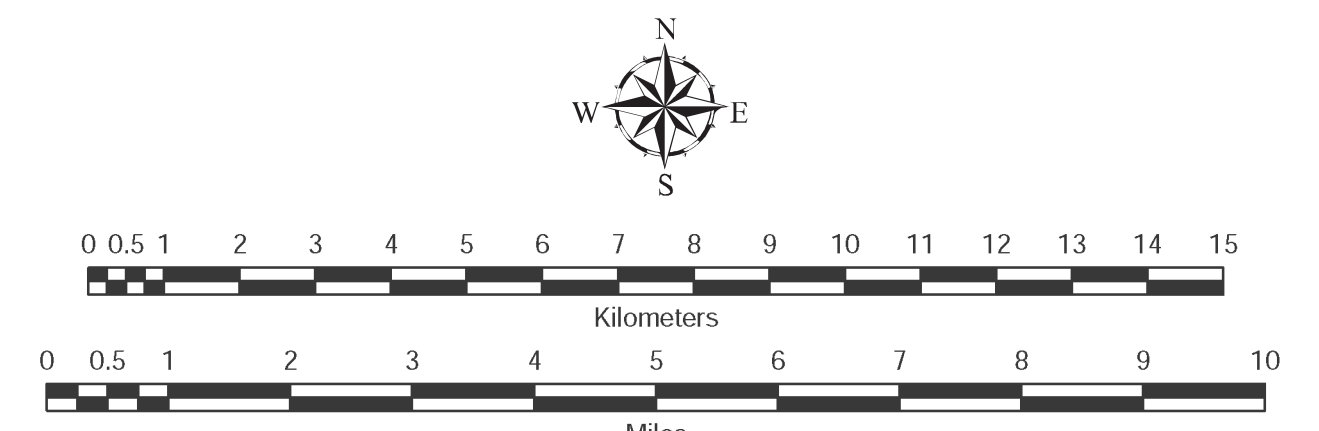
- 1 Land Management Information Center
- 2 U.S. Bureau of the Census (Roads, 1997)
- 3 Legislative GIS Office, 2000
- 4 The Lawrence Group, Inc., 1998
- 5 Twin Cities metropolitan area only

PLEASE NOTE: The school district boundaries appearing on this map were prepared for the U.S. Bureau of the Census. They do NOT represent the legal boundaries of these districts. Rather, they are generalizations of boundaries identified on maps prepared by each county's Assessor's Office and later modified by the Census Bureau to match census geography. Please contact your county assessor or auditor for an exact boundary.

For more information about the lineage of these school district boundaries, see: <http://dcpj.lmcc.state.mn.us/metadata/sd99.html>

Liability Statement

The Minnesota Department of Children, Families & Learning (DFL) and the Land Management Information Center (LMIC) do not warrant the accuracy or completeness of the information provided on this map. The DFL and LMIC are not responsible for any errors, omissions, or damages, including any loss of profits or lost savings, even if DFL or LMIC representative has been advised of the possibility of such damages or any other claim by any third party.



MINNESOTA DEPARTMENT OF Children, Families & Learning
 Prepared for the Department of Children, Families & Learning by Minnesota Planning's Land Management Information Center.
 Map Information:
 Map Created on: 03/27/02
 Account Code: 83402005
 File Name: sd1
 Acrobat (pdf) Printer (ps) & Graphics (eps)
 File Location: g:\mncpl\cfr\3305\aplic\sd1

For further assistance with this map, contact:
 MN Department of Children, Families & Learning
 Land Management Information Center
 608 Cedar Street
 Centennial Building, Room 330
 St. Paul, MN 55155
 Phone: (651) 582-8536
 (800) 368-6922
 Fax: (651) 582-8501
 Sandi Kullen
 Land Management Information Center
 608 Cedar Street
 Centennial Building, Room 330
 St. Paul, MN 55155
 Phone: (651) 297-2615
 Fax: (651) 296-1212
 email: sandi.kullen@mnp.state.mn.us

