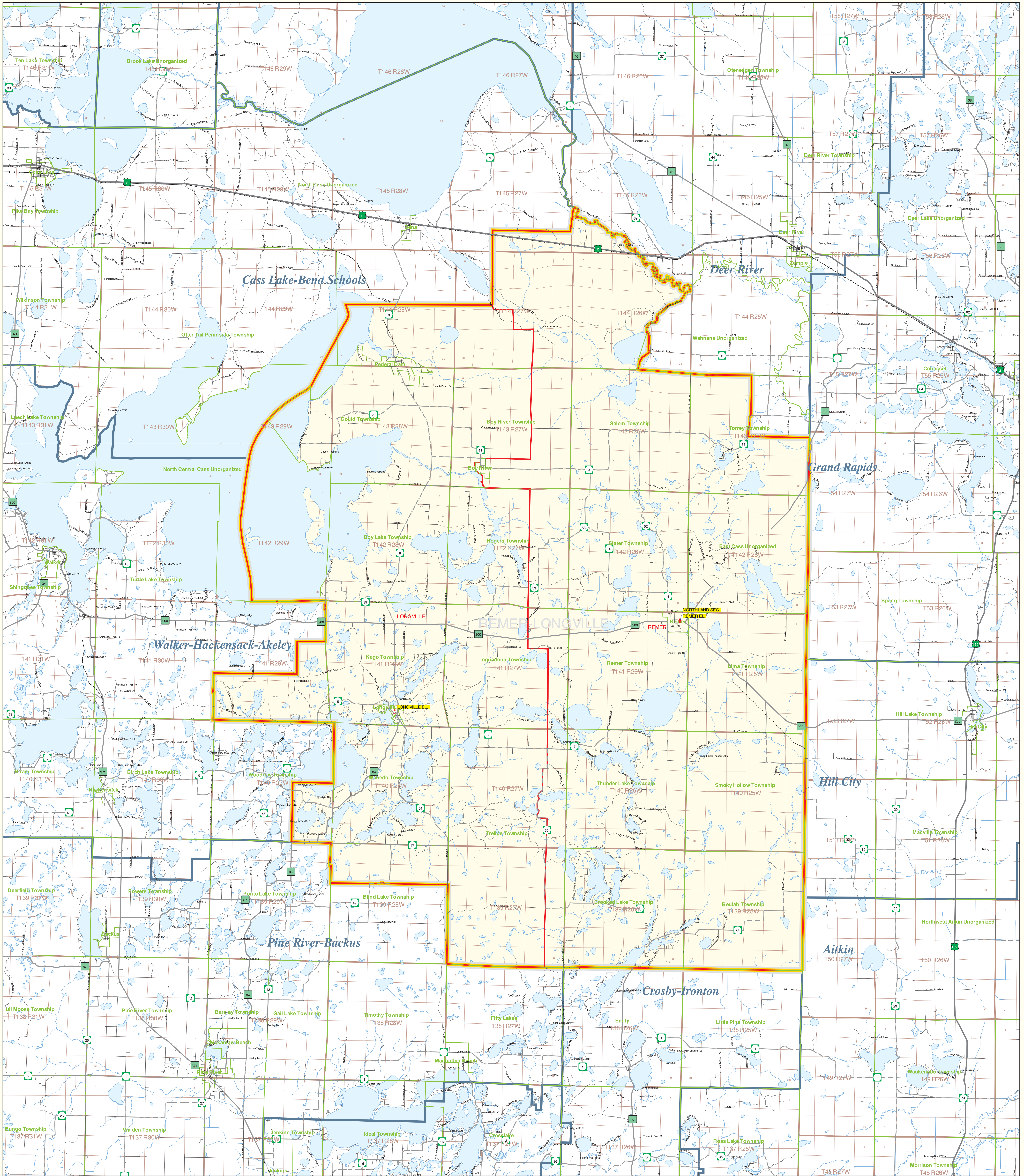


Northland Community Schools School District Number 118

Public School District Attendance Areas and Educational Facility Locations



Public Educational Facilities or Programs¹

- Elementary
- * Middle/Junior
- ◆ High/Secondary

Public School Attendance Areas¹

- Elementary School Attendance Area **ELEM**
- Middle School Attendance Area **MIDD**
- High School Attendance Area **HIGH**

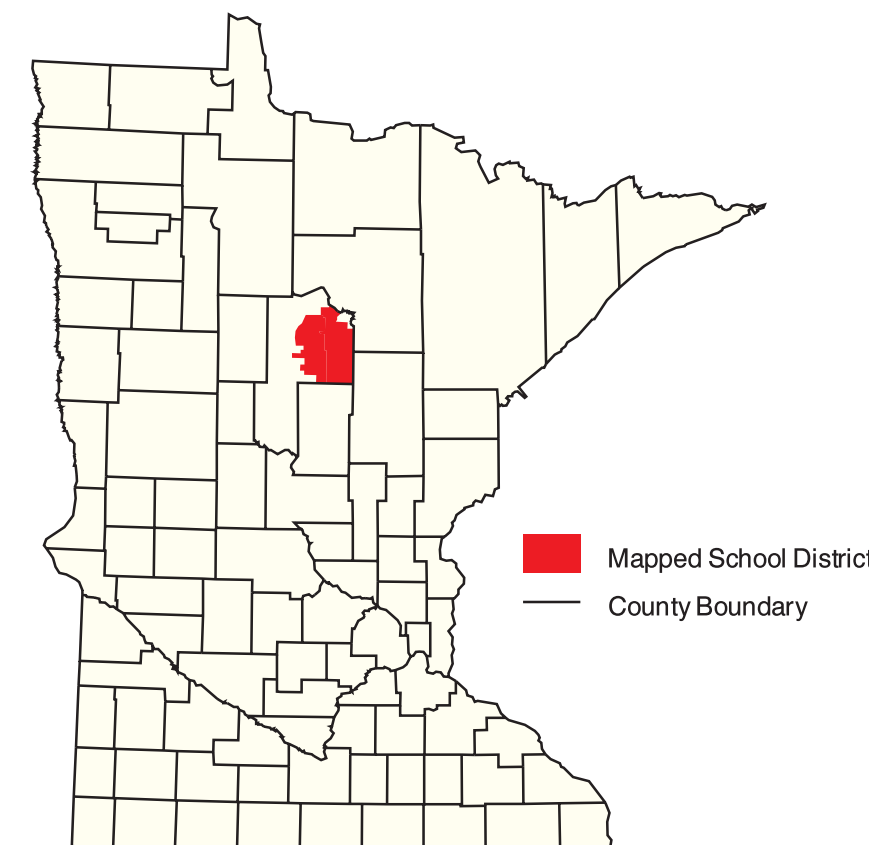
Public School Districts²

- ISD 118
- Other

Other Features^{2,4}

- Interstate Highway
- U.S. Highway
- State Highway
- County Highway
- Road/Street
- Railroad
- Stream
- Lake/Pond
- Minor Civil Division³
(Cities, Townships and Unorganized areas)
- Public Land Survey Township / Range⁵
- Public Land Survey Section⁵

SCHOOL DISTRICT LOCATION IN THE STATE OF MINNESOTA



Data Sources:

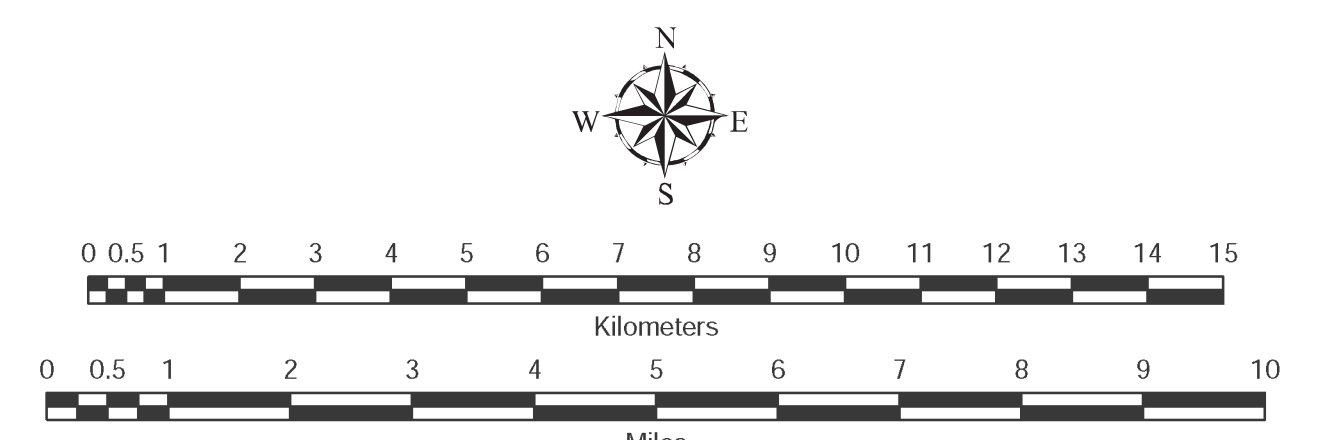
- ¹ Land Management Information Center
- ² U.S. Bureau of the Census (Roads, 1997)
- ³ Legislative GIS Office, 2000
- ⁴ The Lawrence Group, Inc., 1998
- ⁵ (Town Cities metropolitan areas only)

PLEASE NOTE: The school district boundaries appearing on this map were prepared for the U.S. Bureau of the Census. They do NOT represent the legal boundaries of these districts. Rather, they are generalizations of boundaries identified on maps prepared by each county's Assessor's Office and later modified by the Census Bureau to match census geography. Please contact your county assessor or auditor for an exact boundary.

For more information about the lineage of these school district boundaries, see:
<http://ucy.lmhc.state.mn.us/metadata/sd99.html>

Liability Statement

The Minnesota Department of Children, Families & Learning (DFL) and the Land Management Information Center (LMIC) do not warrant the accuracy or completeness of the information provided on this map. The DFL and LMIC are not responsible for any errors, omissions, or damages, including any loss of profits or lost savings, even if DFL or LMIC were to be held liable for such damages or any other claims by any third party.



Prepared for the Department of Children, Families & Learning by Minnesota Planning's Land Management Information Center.

Map Information:
Map Created on: 03/27/02
Account Code: 83420005
File Name: sd118
Acrobat (pdf) Printer (ps) & Graphics (eps)
File Location: g:\mncpl\cfr\3305\sp\sd118\sd118.apr

For further assistance with this map, contact:

MN Department of Children, Families & Learning
Food and Nutrition Service
1920 Highway 36 West
Roseville, MN 55113-4286

Phone: (651) 582-8526
(800) 369-6922
Fax: (651) 582-8501

Sand Kullman
Land Management Information Center
608 Cedar Street
Centennial Building, Room 330
St. Paul, MN 55105

Phone: (651) 297-2615
Fax: (651) 296-1212
email: sand.kullman@mnplanning.state.mn.us

