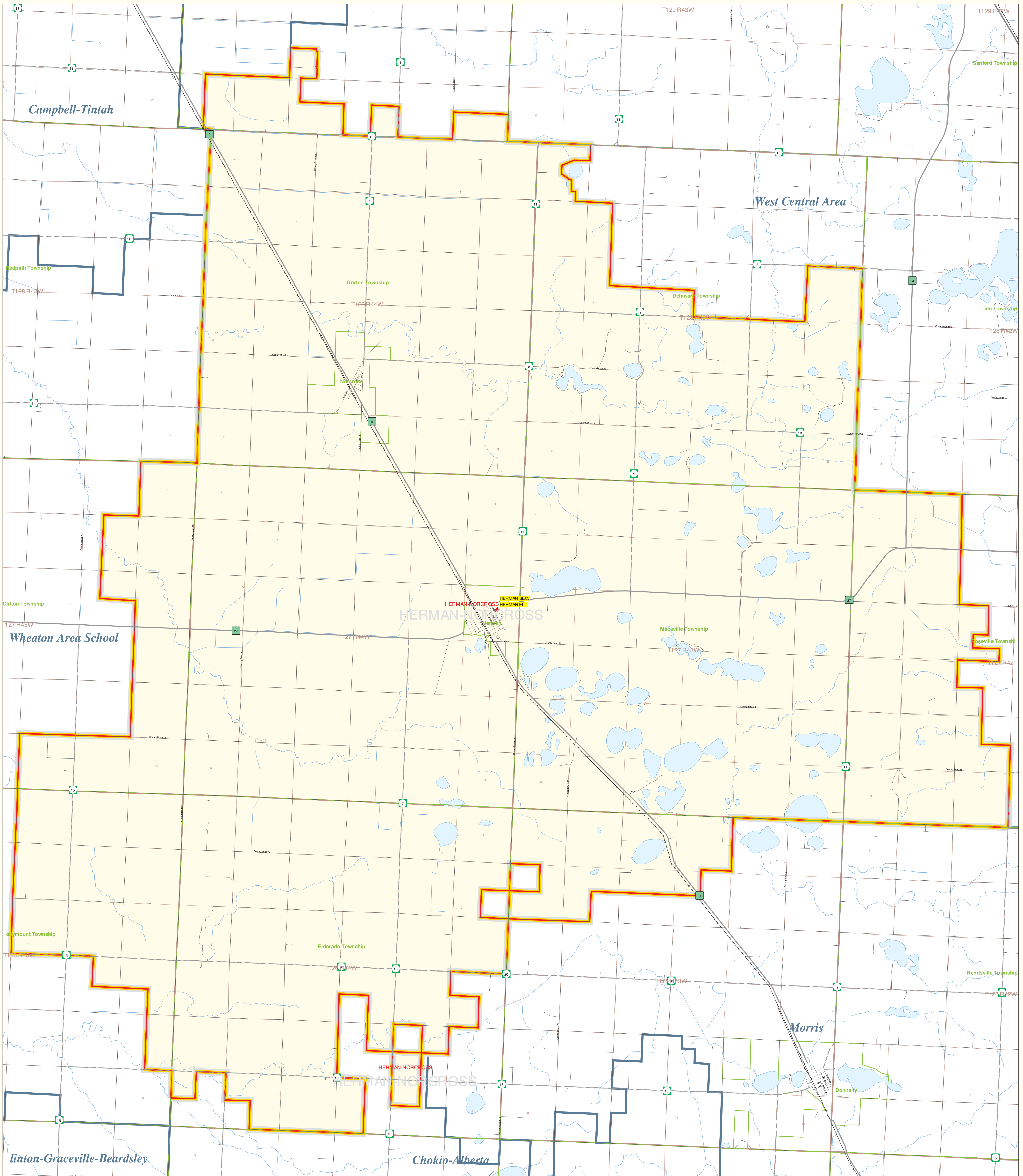


Herman-Norcross School District Number 264

Public School District Attendance Areas and Educational Facility Locations



Public Educational Facilities or Programs¹

- Elementary
- * Middle/Junior
- ◆ High/Secondary

Public School Attendance Areas¹

- Elementary School Attendance Area **ELEM**
- Middle School Attendance Area **MIDD**
- High School Attendance Area **HIGH**

Public School Districts²

- ISD 264
- Other

Other Features^{3,4}

- Interstate Highway
- U.S. Highway
- State Highway
- County Highway
- Road/Street
- Railroad
- Stream
- Lake/Pond
- Minor Civil Division⁵
(Cities, Townships and Unorganized areas)
- Public Land Survey Township / Range⁶
- Public Land Survey Section⁶

SCHOOL DISTRICT LOCATION IN THE STATE OF MINNESOTA



Data Sources:

- ¹ Land Management Information Center
- ² U.S. Bureau of the Census (Roads, 1997)
- ³ Legislative GIS Office, 2000
- ⁴ The Lawrence Group, Inc., 1998
(Twin Cities metropolitan area only)

PLEASE NOTE: The school district boundaries appearing on this map were prepared for the U.S. Bureau of the Census. They do NOT represent the legal boundaries of these districts. Rather, they are generalizations of boundaries identified on maps prepared by each county's Assessor's Office and later modified by the Census Bureau to match census geography. Please contact your county assessor or auditor for an exact boundary.

For more information about the lineage of these school district boundaries, see:
<http://ucy.lmc.state.mn.us/metadata/ld99.html>

Liability Statement

The Minnesota Department of Children, Families & Learning (CFL) and the Land Management Information Center (LMIC) do not warrant the accuracy or implied warranties, including warranties of merchantability and fitness, in its event will CFL or LMIC be liable for any consequential, incidental or special damages, including any lost profits or lost savings, even if CFL or LMIC representative has been advised of the possibility of such damages or any other claim by any third party.

For further assistance with this map, contact:
MN Department of Children, Families & Learning
Food and Nutrition Service
1500 Highway 36 West
Roseville, MN 55113-4286
Phone: (651) 582-8536
(800) 368-6922
Fax: (651) 582-8501

Prepared for the Department of Children, Families & Learning
by Minnesota Planning's Land Management Information Center.
Map Information:
Map Created on: 03/27/02
Account Code: 83402005
File Name: gds02
Acrobat (pdf) Printer (ps) & Graphics (eps)
File Location: g:\misp\proj\305\gds02\gds02.pdf
Sandi Kullum
Land Management Information Center
608 Cedar Street
Centennial Building, Room 330
St. Paul, MN 55105
Phone: (651) 297-2615
Fax: (651) 296-1212
email: sandi.kullum@mnp.state.mn.us

