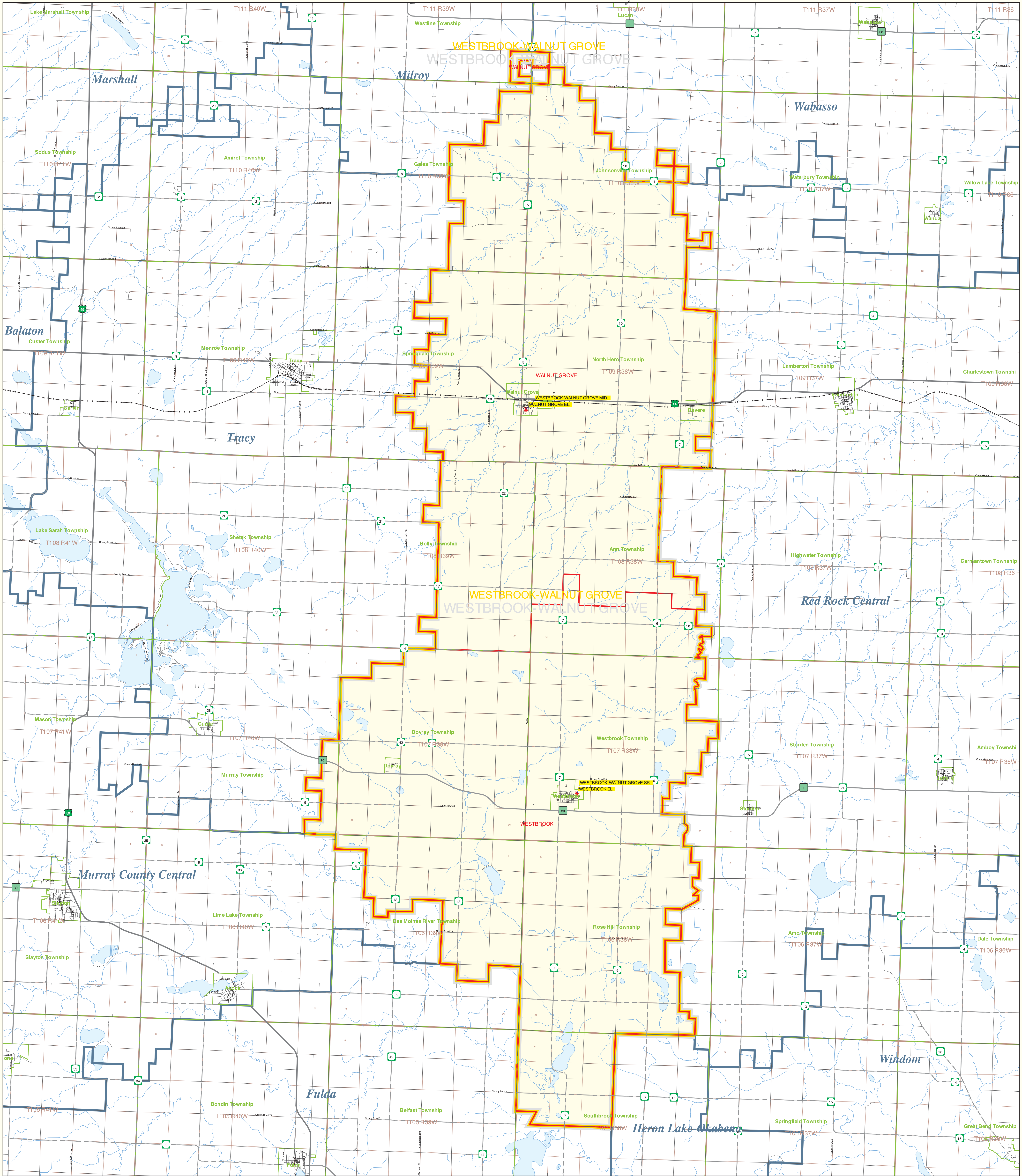


# Westbrook-Walnut Grove Schools School District Number 2898

Public School District Attendance Areas and Educational Facility Locations



**Public Educational Facilities or Programs<sup>1</sup>**

- Elementary
- ★ Middle/Junior
- ◆ High/Secondary

**Public School Attendance Areas<sup>1</sup>**

- Elementary School Attendance Area **ELEM**
- Middle School Attendance Area **MIDD**
- High School Attendance Area **HIGH**

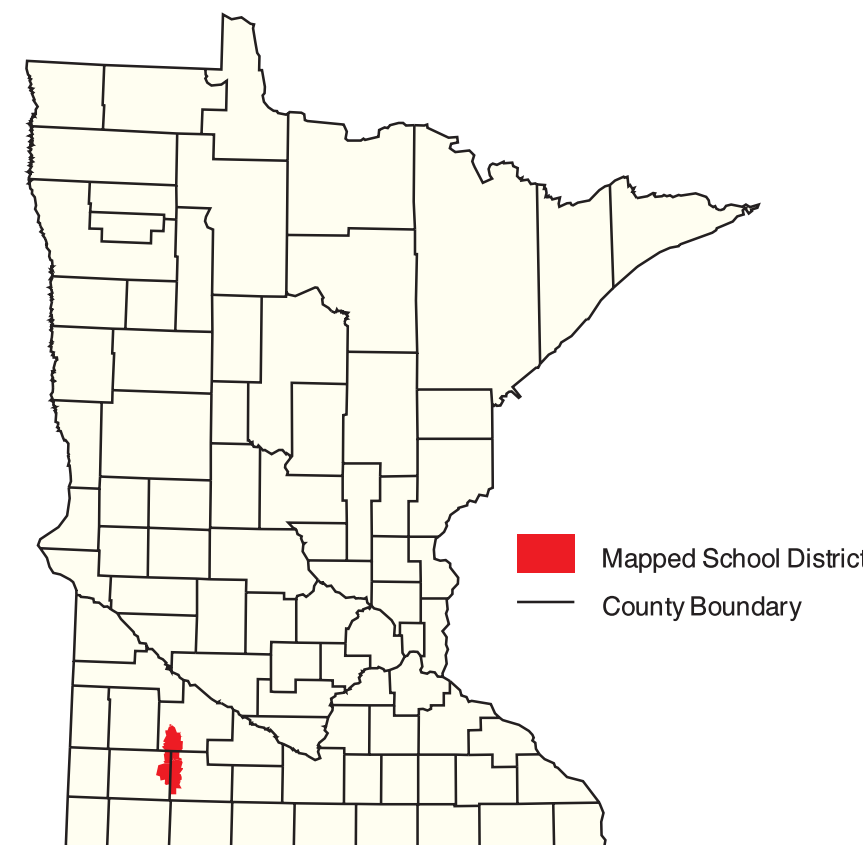
**Public School Districts<sup>2</sup>**

- (U.S. Bureau of the Census)
- ISD 2898
- Other

**Other Features<sup>2,4</sup>**

- Interstate Highway
- U.S. Highway
- State Highway
- County Highway
- Road/Street
- Railroad
- Stream
- Lake/Pond
- Minor Civil Division<sup>3</sup>  
(Cities, Townships and Unorganized areas)
- Public Land Survey Township / Range<sup>5</sup>
- Public Land Survey Section<sup>5</sup>

**SCHOOL DISTRICT LOCATION  
IN THE  
STATE OF MINNESOTA**



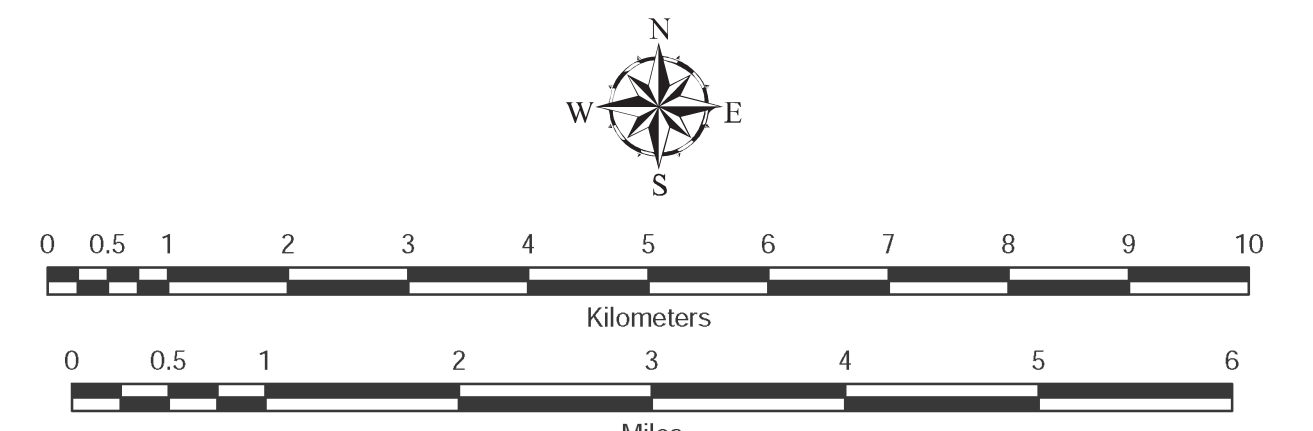
**Data Sources:**

- <sup>1</sup> Land Management Information Center
- <sup>2</sup> U.S. Bureau of the Census (Roads, 1997)
- <sup>3</sup> Legislative GIS Office, 2000
- <sup>4</sup> The Lawrence Group, Inc., 1998
- <sup>5</sup> (Twin Cities metropolitan area only)

**PLEASE NOTE:** The school district boundaries appearing on this map were prepared for the U.S. Bureau of the Census. They do NOT represent the legal boundaries of these districts. Rather, they are generalizations of boundaries identified on maps prepared by each county's Assessor's Office and later modified by the Census Bureau to match census geography. Please contact your county assessor or auditor for an exact boundary.

For more information about the lineage of these school district boundaries, see:  
<http://lmc.lmc.state.mn.us/metadata/isd99.html>

**Liability Statement**  
The Minnesota Department of Children, Families & Learning (DFL) and the Land Management Information Center (LMIC) do not warrant the results or accuracy of the information provided on this map. The user assumes all liability for any use of the information provided on this map, including any loss of profits or lost savings, even if DFL or LMIC representative has been advised of the possibility of such damages or any other claim by a third party.



MINNESOTA DEPARTMENT OF  
**Children, Families & Learning**  
Prepared for the Department of Children, Families & Learning by Minnesota Planning's Land Management Information Center.  
Map Information:  
Map Created on: 03/20/02  
Account Code: 83402005  
File Name: 289898  
Acrobat (.pdf), Printer (.ps) & Graphics (.eps)  
File Location: g:\mncpl\proj\2898\_30505\app\lmc\lmc

For further assistance with this map, contact:  
MN Department of Children, Families & Learning  
Food and Nutrition Service  
1500 Highway 36 West  
Roseville, MN 55113-4286  
Phone: (651) 582-8526  
(800) 368-6922  
Fax: (651) 582-8501

Sarah Kullman  
Land Management Information Center  
608 Cedar Street  
Centennial Building, Room 330  
St. Paul, MN 55105  
Phone: (651) 297-2615  
Fax: (651) 296-1212  
email: sarah.kullman@mnplanning.state.mn.us

