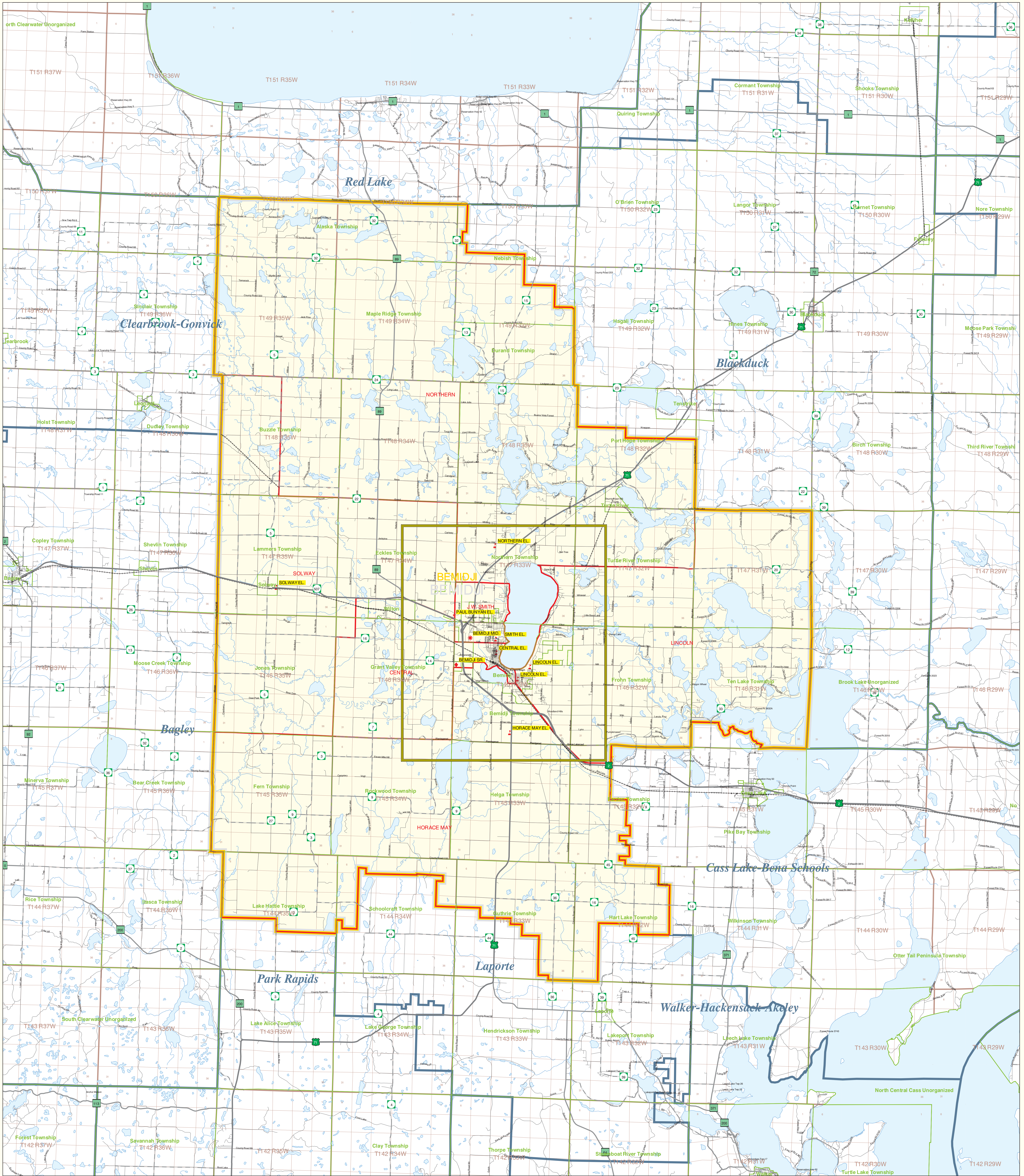


Bemidji School District Number 31

Public School District Attendance Areas and Educational Facility Locations



Public Educational Facilities or Programs¹

- Elementary
- * Middle/Junior
- ♦ High/Secondary

Public School Attendance Areas¹

- Elementary School Attendance Area **ELEM**
- Middle School Attendance Area **MIDD**
- High School Attendance Area **HIGH**

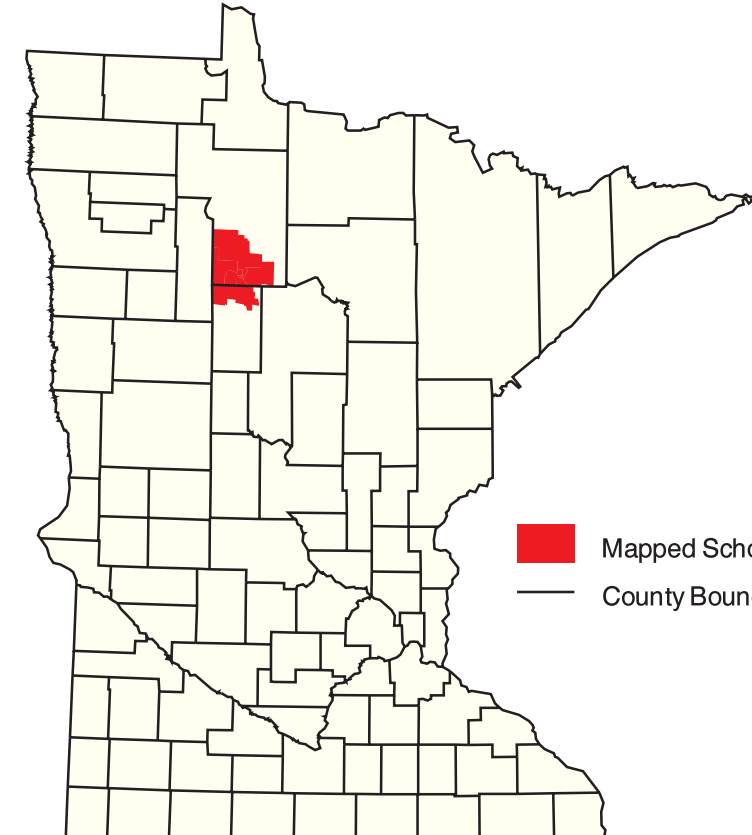
Public School Districts²
(U.S. Bureau of the Census)

- ISD 31
- Other

Other Features^{2,4}

- Interstate Highway
- U.S. Highway
- State Highway
- County Highway
- Road/Street
- Railroad
- Stream
- Lake/Pond
- Minor Civil Division³
(Cities, Townships and Unorganized areas)
- Public Land Survey Township / Range³
- Public Land Survey Section³
- See Map 2

**SCHOOL DISTRICT LOCATION
IN THE
STATE OF MINNESOTA**



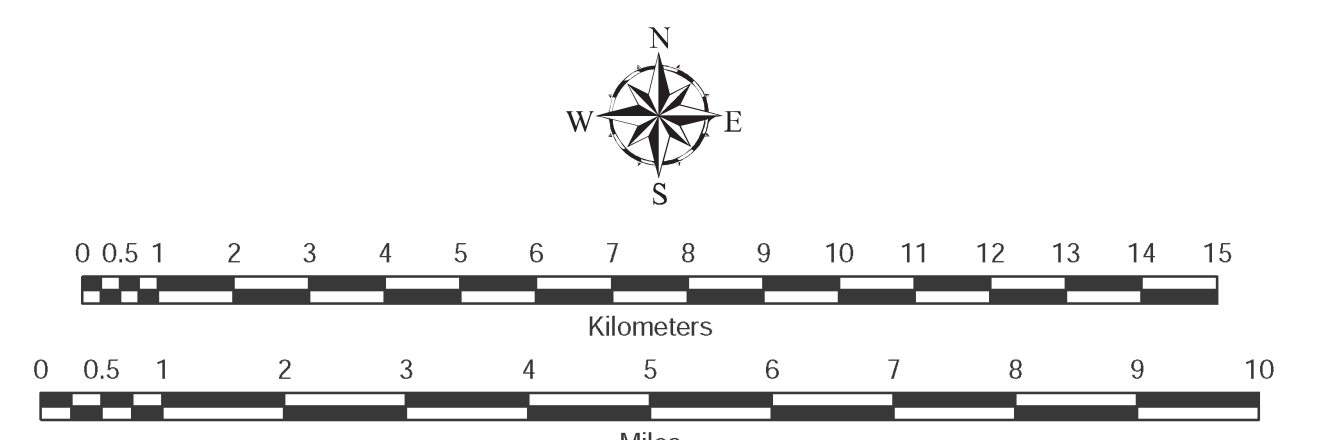
Data Sources:

- ¹ Land Management Information Center
- ² U.S. Bureau of the Census (Roads, 1997)
- ³ Legislative GIS Office, 2000
- ⁴ The Lawrence Group, Inc., 1998
(Twin Cities metropolitan area only)

PLEASE NOTE: The school district boundaries appearing on this map were prepared for the U.S. Bureau of the Census. They do NOT represent the legal boundaries of these districts. Rather, they are generalizations of boundaries identified on maps prepared by each county's Assessor's Office and later modified by the Census Bureau to match census geography. Please contact your county assessor or auditor for an exact boundary.

For more information about the lineage of these school district boundaries, see:
<http://ucv.jmi.state.mn.us/metadata/sd99.html>

Liability Statement
The Minnesota Department of Children, Families & Learning (DFL) and the Land Management Information Center (LMIC) do not warrant the results you may obtain by using this map. This map is provided as a reference only and does not constitute a warranty of any kind, including but not limited to accuracy, completeness, or timeliness. The DFL and LMIC are not responsible for any damages, including any lost profits or lost savings, even if DFL or LMIC representative has been advised of the possibility of such damages or any other claims by any third party.



MINNESOTA DEPARTMENT OF
Children, Families & Learning
Prepared for the Department of Children, Families & Learning by Minnesota Planning's Land Management Information Center.
Map Information:
Map Created on: 03/27/02
Account Code: 03402005
File Name: sd31
Acrobat (PDF) Printer (ps) & Graphics (eps)
File Location: g:\mlic\proj\31_00\31_00\sd31_00.pdf

For further assistance with this map, contact:
MN Department of Children, Families & Learning
Food and Nutrition Service
1500 Highway 36 West
Roseville, MN 55113-4286
Phone: (651) 582-8536
(800) 368-6922
Fax: (651) 582-8501

Sand Kullman
Land Management Information Center
608 Cedar Street
Centennial Building, Room 330
St. Paul, MN 55105
Phone: (651) 297-2615
Fax: (651) 296-1212
email: sand.kullman@mnplanning.state.mn.us

