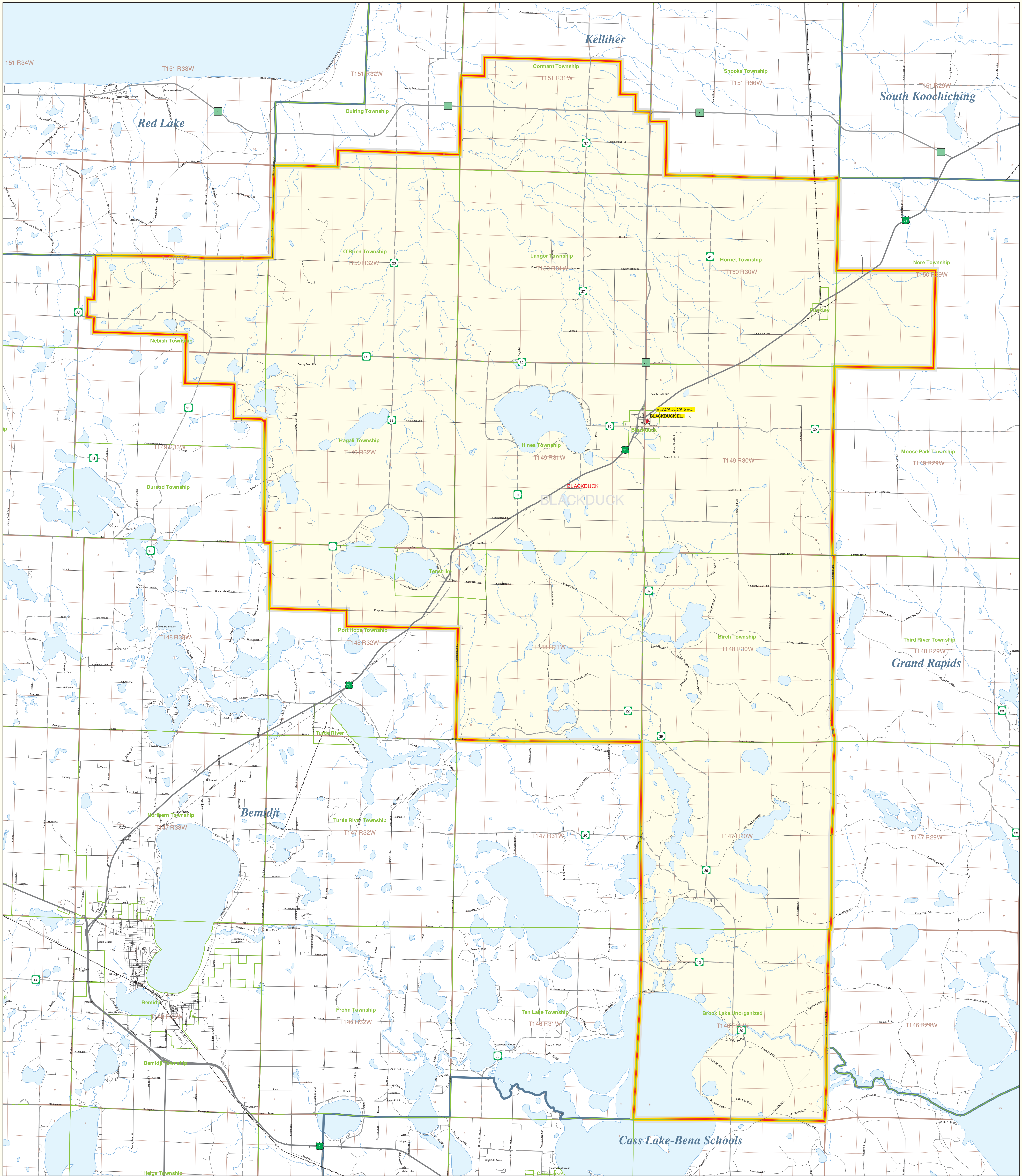


# Blackduck School District Number 32

## Public School District Attendance Areas and Educational Facility Locations



### Public Educational Facilities or Programs<sup>1</sup>

- Elementary
- \* Middle/Junior
- ♦ High/Secondary

### Public School Attendance Areas<sup>1</sup>

- Elementary School Attendance Area **ELEM**
- Middle School Attendance Area **MIDD**
- High School Attendance Area **HIGH**

### Public School Districts<sup>2</sup>

- ISD 32
- Other

### Other Features<sup>2,4</sup>

- Interstate Highway
- U.S. Highway
- State Highway
- County Highway
- Road/Street
- Railroad
- Stream
- Lake/Pond
- Minor Civil Division<sup>3</sup>  
(Cities, Townships and Unorganized areas)
- Public Land Survey Township / Range<sup>3</sup>
- Public Land Survey Section<sup>3</sup>

### SCHOOL DISTRICT LOCATION IN THE STATE OF MINNESOTA



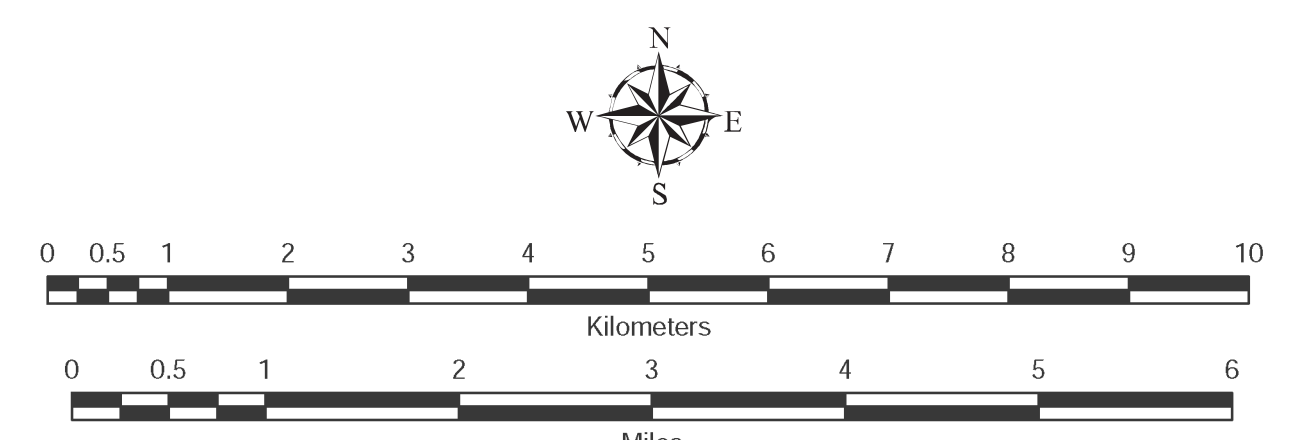
### Data Sources:

- <sup>1</sup> Land Management Information Center
- <sup>2</sup> U.S. Bureau of the Census (Roads, 1997)
- <sup>3</sup> Legislative GIS Office, 2000
- <sup>4</sup> The Lawrence Group, Inc., 1998
- (Town Cities metropolitan areas only)

**PLEASE NOTE:** The school district boundaries appearing on this map were prepared for the U.S. Bureau of the Census. They do NOT represent the legal boundaries of these districts. Rather, they are generalizations of boundaries identified on maps prepared by each county's Assessor's Office and later modified by the Census Bureau to match census geography. Please contact your county assessor or auditor for an exact boundary.

For more information about the lineage of these school district boundaries, see:  
<http://lucy.lmrc.state.mn.us/metadata/isd99.html>

**Liability Statement**  
 The Minnesota Department of Children, Families & Learning (DFL) and the Land Management Information Center (LMIC) do not warrant the results or accuracy of any data, including warranties of merchantability and fitness, in any way sold, CPL, or LMC to parties for any commercial, incidental or special damages, including any lost profits or lost savings, even if CPL or LMC representative has been advised of the possibility of such damages or any other claim by any third party.



Prepared for the Department of Children, Families & Learning by Minnesota Planning's Land Management Information Center.

Map Information:  
 Map Created on: 03/27/02  
 Account Code: 83402005  
 File Name: as22  
 Acrobat (pdf) Printer (ps) & Graphics (eps)  
 File Location: g:\mncpl\cpl\lmc\3055\ap\lmc\lmc

For further assistance with this map, contact:  
 MN Department of Children, Families & Learning  
 Food and Nutrition Service  
 1500 Highway 36 West  
 Roseville, MN 55113-4286  
 Phone: (651) 582-8536  
 (800) 368-6922  
 Fax: (651) 582-8501

Sand Kullonen  
 Land Management Information Center  
 658 Cedar Street  
 Centennial Building, Room 330  
 St. Paul, MN 55105  
 Phone: (651) 297-2615  
 Fax: (651) 296-1212  
 email: sand.kullonen@mnp.state.mn.us

