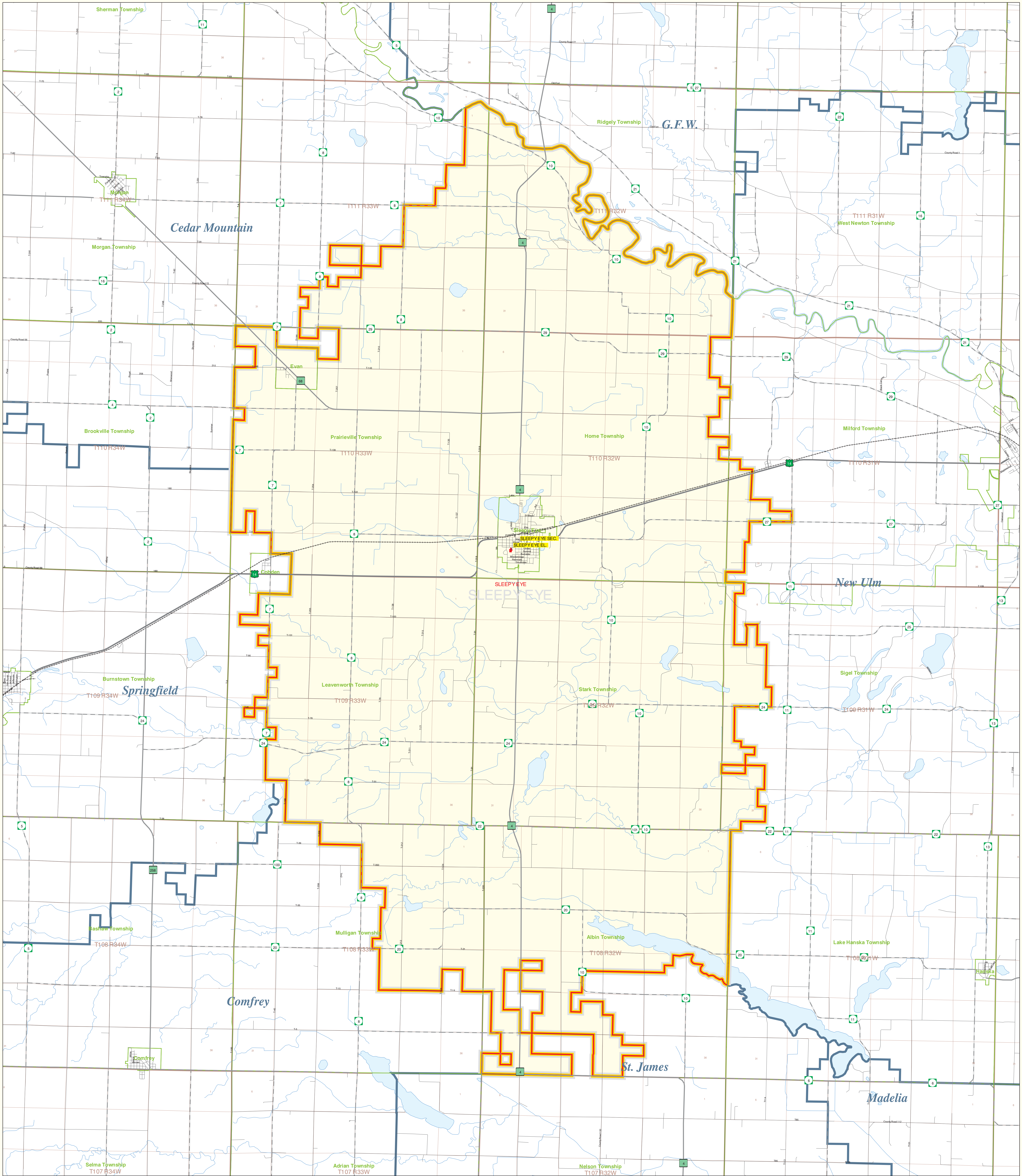


# Sleepy Eye School District Number 84

Public School District Attendance Areas and Educational Facility Locations



**Public Educational Facilities or Programs<sup>1</sup>**

- Elementary
- \* Middle/Junior
- ♦ High/Secondary

**Public School Attendance Areas<sup>1</sup>**

- Elementary School Attendance Area **ELEM**
- Middle School Attendance Area **MIDD**
- High School Attendance Area **HIGH**

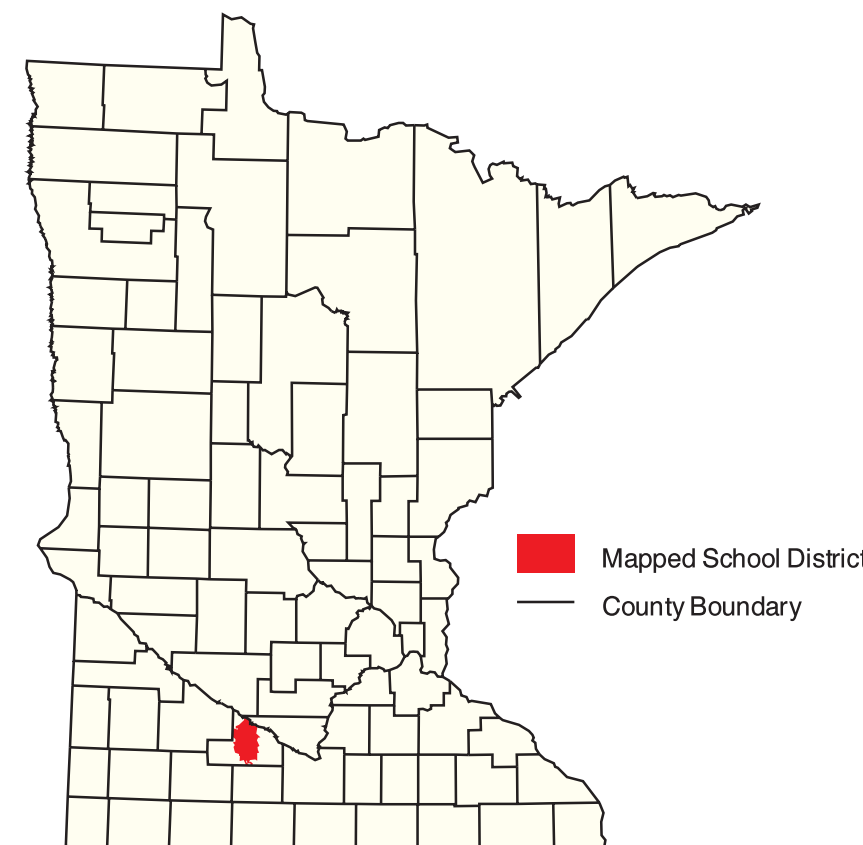
**Public School Districts<sup>2</sup>**

- ISD 84
- Other

**Other Features<sup>2,4</sup>**

- Interstate Highway
- U.S. Highway
- State Highway
- County Highway
- Road/Street
- Railroad
- Stream
- Lake/Pond
- Minor Civil Division<sup>3</sup>  
(Cities, Townships and Unorganized areas)
- Public Land Survey Township / Range<sup>3</sup>
- Public Land Survey Section<sup>3</sup>

**SCHOOL DISTRICT LOCATION  
IN THE  
STATE OF MINNESOTA**



**Data Sources:**

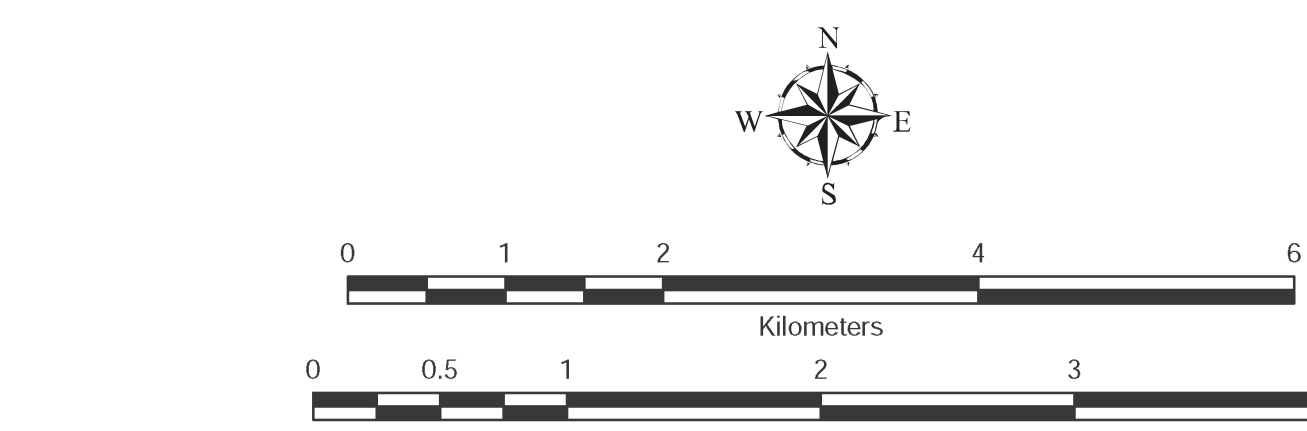
- <sup>1</sup> Land Management Information Center
- <sup>2</sup> U.S. Bureau of the Census (Roads, 1997)
- <sup>3</sup> Legislative GIS Office, 2000
- <sup>4</sup> The Lawrence Group, Inc., 1998  
(Twin Cities metropolitan area only)

**PLEASE NOTE:** The school district boundaries appearing on this map were prepared for the U.S. Bureau of the Census. They do NOT represent the legal boundaries of these districts. Rather, they are generalizations of boundaries identified on maps prepared by each county's Assessor's Office and later modified by the Census Bureau to match census geography. Please contact your county assessor or auditor for an exact boundary.

For more information about the lineage of these school district boundaries, see:  
<http://lmc.lmcc.state.mn.us/metadata/d99.html>

**Liability Statement**

The Minnesota Department of Children, Families & Learning (DFL) and the Land Management Information Center (LMIC) do not warrant the results or accuracy of any data, including any errors or omissions, or any damages, incidental or consequential, including any loss of profits or lost savings, even if DFL or LMIC representative has been advised of the possibility of such damages or any other claim by any third party.



**MINNESOTA DEPARTMENT OF Children, Families & Learning**

Prepared for the Department of Children, Families & Learning by Minnesota Planning's Land Management Information Center.

Map Information:  
Map Created on: 03/27/02  
Account Code: 83400005  
File Name: ad84  
Acrobat (.pdf), Printer (.ps) & Graphics (.eps)  
File Location: g:\misp\proj\84\_0305\ap\ad84.pdf

For further assistance with this map, contact:  
MN Department of Children, Families & Learning  
Food and Nutrition Service  
1500 Highway 36 West  
Roseville, MN 55113-4286

Phone: (651) 582-8526  
(800) 368-8922  
Fax: (651) 582-8501

Sand Kullum  
Land Management Information Center  
608 Cedar Street  
Central Hall Building, Room 330  
St. Paul, MN 55105

Phone: (651) 297-2615  
Fax: (651) 296-1212  
email: sand.kullum@mnplanning.state.mn.us