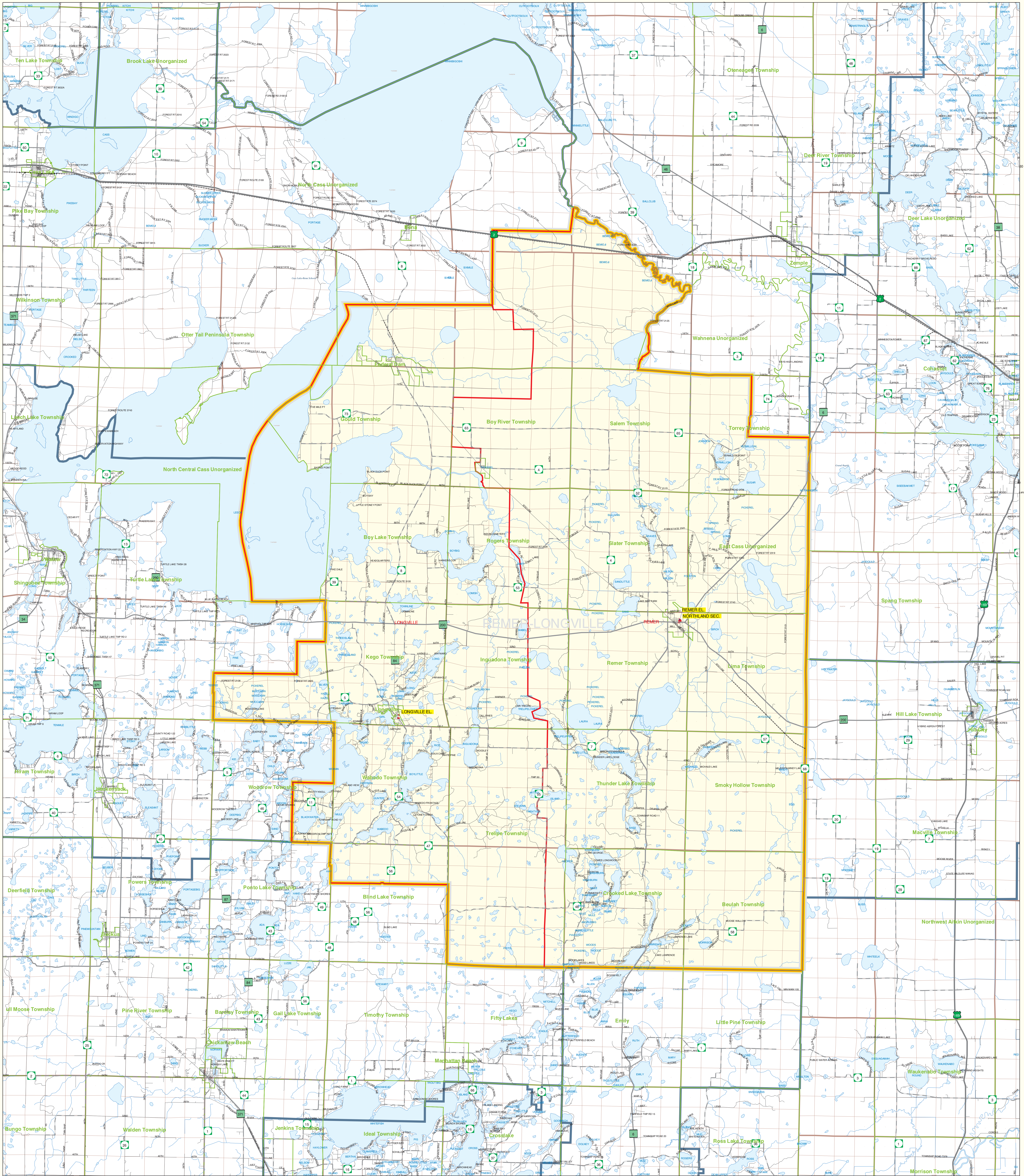


# Public School District Attendance Areas and Educational Facility Locations Northland Community Schools School District Number 118

SY 2003 - 2004

Map 1 of 1



### Public Educational Facilities or Programs<sup>1</sup>

- \* Elementary
- \* Middle/Junior
- ♦ High/Secondary

### Public School Attendance Areas<sup>1</sup>

- Elementary School Attendance Area **ELEM**
- Middle School Attendance Area **MIDD**
- High School Attendance Area **HIGH**

### Public School Districts<sup>1</sup>

- ISD 118
- Other

### Other Features<sup>2,4</sup>

- Interstate Highway
- U.S. Highway
- State Highway
- County Highway
- Road/Street
- Railroad
- Stream
- Lake/Pond
- Minor Civil Division<sup>3</sup>  
(Cities, Townships and Unorganized areas)
- Public Land Survey Township / Range<sup>5</sup>
- Public Land Survey Section<sup>5</sup>

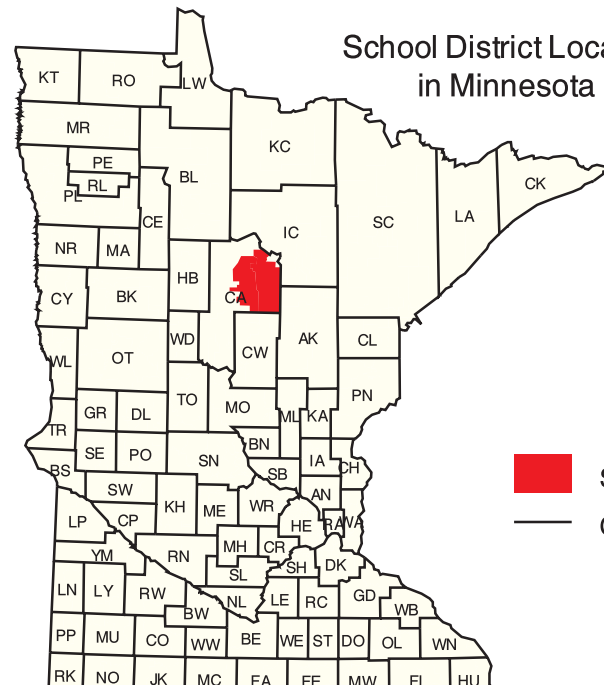
### Data Sources:

- <sup>1</sup> Land Management Information Center
- <sup>2</sup> U.S. Bureau of the Census / MN Legislative GIS Office<sup>6</sup> (with modifications requested by school districts)
- <sup>3</sup> Legislative GIS Office, 2001 (and School Districts)
- <sup>4</sup> The Lawrence Group, Inc., 2004
- <sup>5</sup> The Census Bureau's district boundary and indicate areas they fell were in error. Their additional deletions may not have been coordinated with adjacent school districts. Please contact your county's auditor or assessor to obtain an accurate legal description of the boundary.

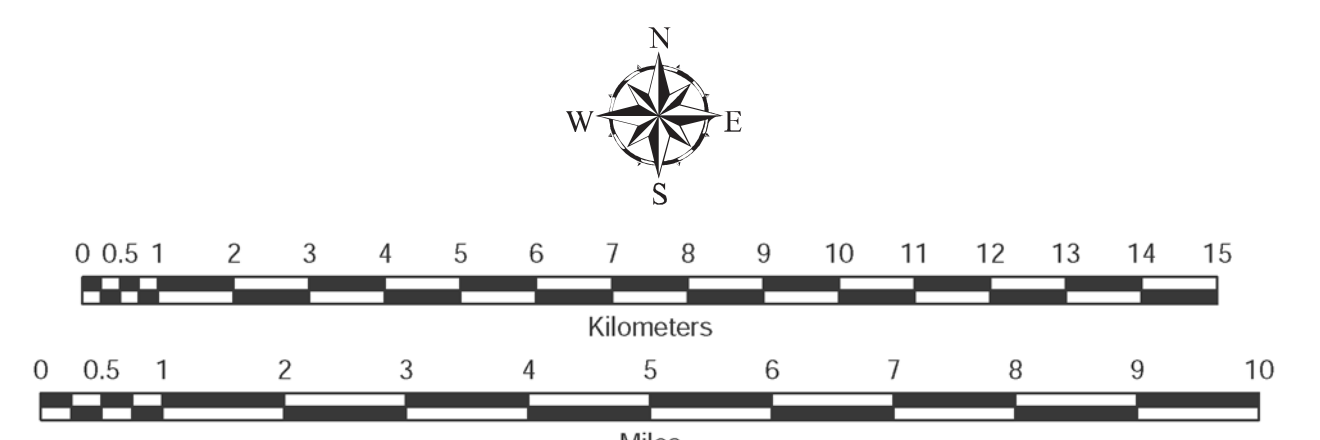
**PLEASE NOTE:** The school district boundary appearing on this map was prepared for the Department of Education. It does not necessarily represent the legal boundary of the district. It is a generalization of boundaries drawn on maps in the late 1980s by county officials and modified by the U.S. Bureau of the Census, most recently for Census 2000. For the academic year 2003/2004, LMIC asked school districts to review maps of the Census Bureau's district boundary and indicate areas they fell were in error. Their additional deletions may not have been coordinated with adjacent school districts. Please contact your county's auditor or assessor to obtain an accurate legal description of the boundary.

### Liability Statement

The Minnesota Department of Education, Food & Nutrition Service (MDE-FNS) and Land Management Information Center (LMIC) do not warrant the results or implied warranties, including warranties of merchantability and fitness, in any way, for any use of the data for any purpose, incidental or special damages, including any lost profits or lost savings, even if MDE or LMIC representative has been advised of the possibility of such damages or any other claim by any third party.



School District Location in Minnesota



For further assistance with this map, contact:  
 MN Department of Education  
 Food and Nutrition Service  
 1500 Highway 36 West  
 Roseville, MN 55113-4286  
 Phone: (651) 582-8536  
 (800) 369-6922  
 Fax: (651) 582-8501

Prepared for the Department of Education-Food & Nutrition Service by the Dept. of Administration's Land Management Information Center.  
 Map Information:  
 Map Created on 05/24/04  
 Account Code: 73713203  
 File Name: 05118  
 Acrobat (.pdf), Printer (.ps) & Graphics (.eps)  
 File Location: c:\mde\lmi\0405\_map\map\graphics\lmi