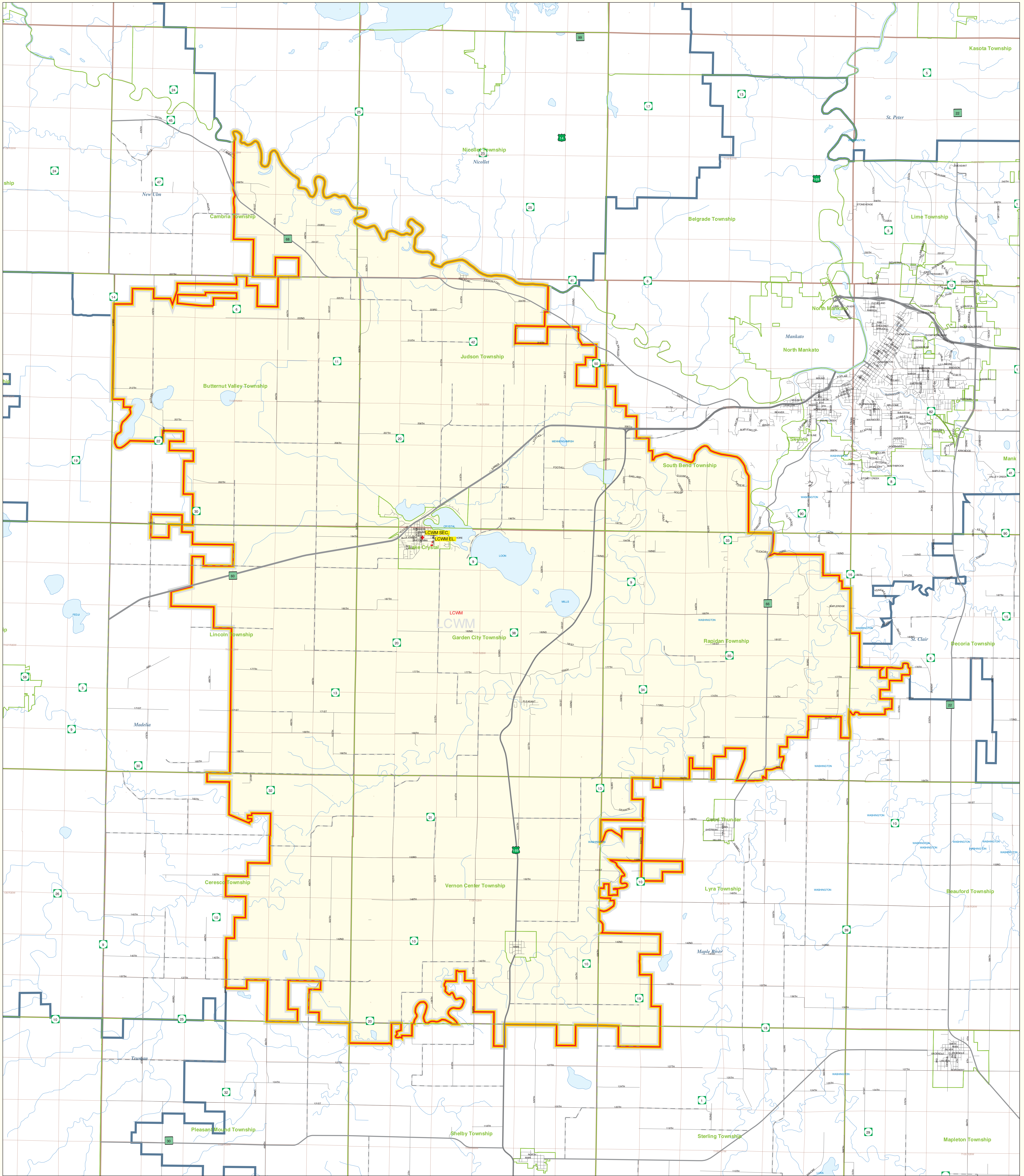


Public School District Attendance Areas and Educational Facility Locations Lake Crystal-Wellcome Memorial School District Number 2071

SY 2003 - 2004

Map 1 of 1



Public Educational Facilities or Programs¹

- ♦ Elementary
- * Middle/Junior
- ◆ High/Secondary

Public School Attendance Areas¹

- Elementary School Attendance Area **ELEM**
- Middle School Attendance Area **MIDD**
- High School Attendance Area **HIGH**

Public School Districts²

- ISD 2071
- Other

Other Features^{2,4}

- Interstate Highway
- U.S. Highway
- State Highway
- County Highway
- Road/Street
- Railroad
- Stream
- Lake/Pond
- Minor Civil Division³
(Cities, Townships and Unorganized areas)
- Public Land Survey Township / Range³
- Public Land Survey Section³

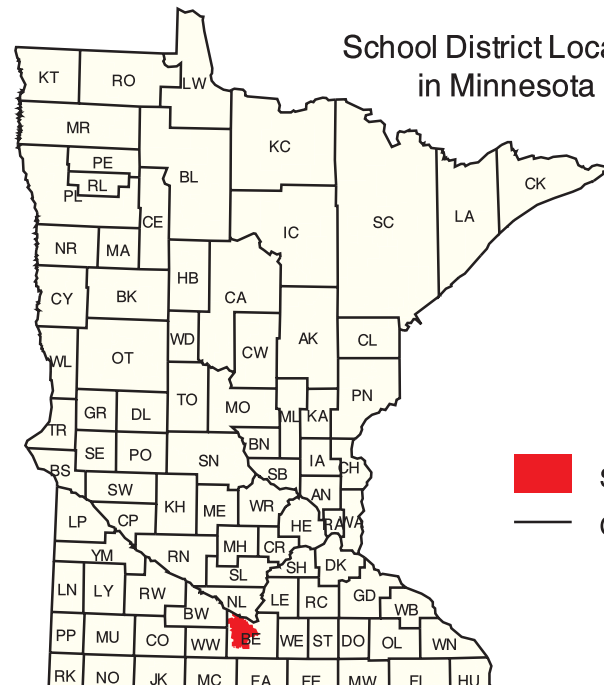
Data Sources:

- ¹ Land Management Information Center
- ² U.S. Bureau of the Census / MN Legislative GIS Office³ (with modifications requested by school districts)
- ³ Legislative GIS Office, 2001 (and School Districts)
- ⁴ The Lawrence Group, Inc., 2004 (Twin Cities metropolitan area only)

PLEASE NOTE: The school district boundary appearing on this map was prepared for the Department of Education. It does not necessarily represent the legal boundary of the district. It is a generalization of boundaries drawn on maps in the late 1980s by county officials and modified by the U.S. Bureau of the Census, most recently for Census 2000. For the academic year 2003-2004, LMIC asked school officials to review maps of the Census Bureau's district boundary and indicate areas they felt were in error. Their additions/deletions may not have been coordinated with adjacent school districts. Please contact your county's auditor or assessor to obtain an accurate legal description of the boundary.

Liability Statement

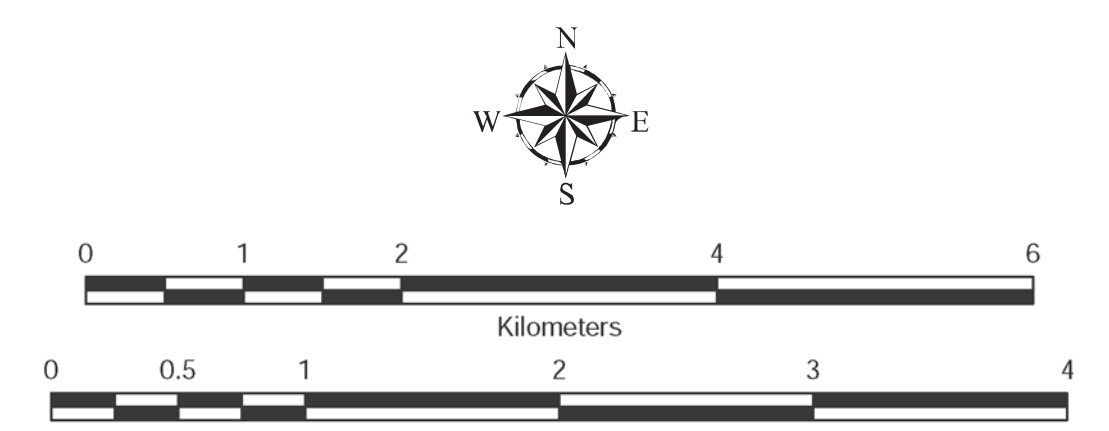
The Minnesota Department of Education, Food & Nutrition Service (MDE-FNS) and Land Management Information Center (LMIC) do not warrant the results you may obtain by using this map. We make no warranty, either express or implied, regarding the accuracy, reliability, or completeness of the information contained herein. In no event will MDE or LMIC be liable for any consequential, incidental or special damages, including any loss of profits or lost savings, even if MDE or LMIC representative has been advised of the possibility of such damages or any other claim by any third party.



School District Location in Minnesota

School District

County Boundary



For further assistance with this map, contact:
MN Department of Education
 Food and Nutrition Service
 1500 Highway 36 West
 Roseville, MN 55113-4286
 Phone: (651) 582-8536
 (800) 366-6922
 Fax: (651) 582-8501

Scott Freiburg
 Land Management Information Center
 658 Cedar Street
 Centennial Building, Room 330
 St. Paul, MN 55115
 Phone: (651) 296-6600
 Fax: (651) 296-1212
 Email: scott.freiburg@state.mn.us

Prepared for the Department of Education-Food & Nutrition Service by the Dept. of Administration's Land Management Information Center.
 Map Information:
 Map Created on 08/05/04
 Account Code: 73713209
 File Name: isd2071
 Acrobat (.pdf), Printer (.ps) & Graphics (.eps)
 File Location: c:\mde\isds\2071_map\map\graphics\isds2071