

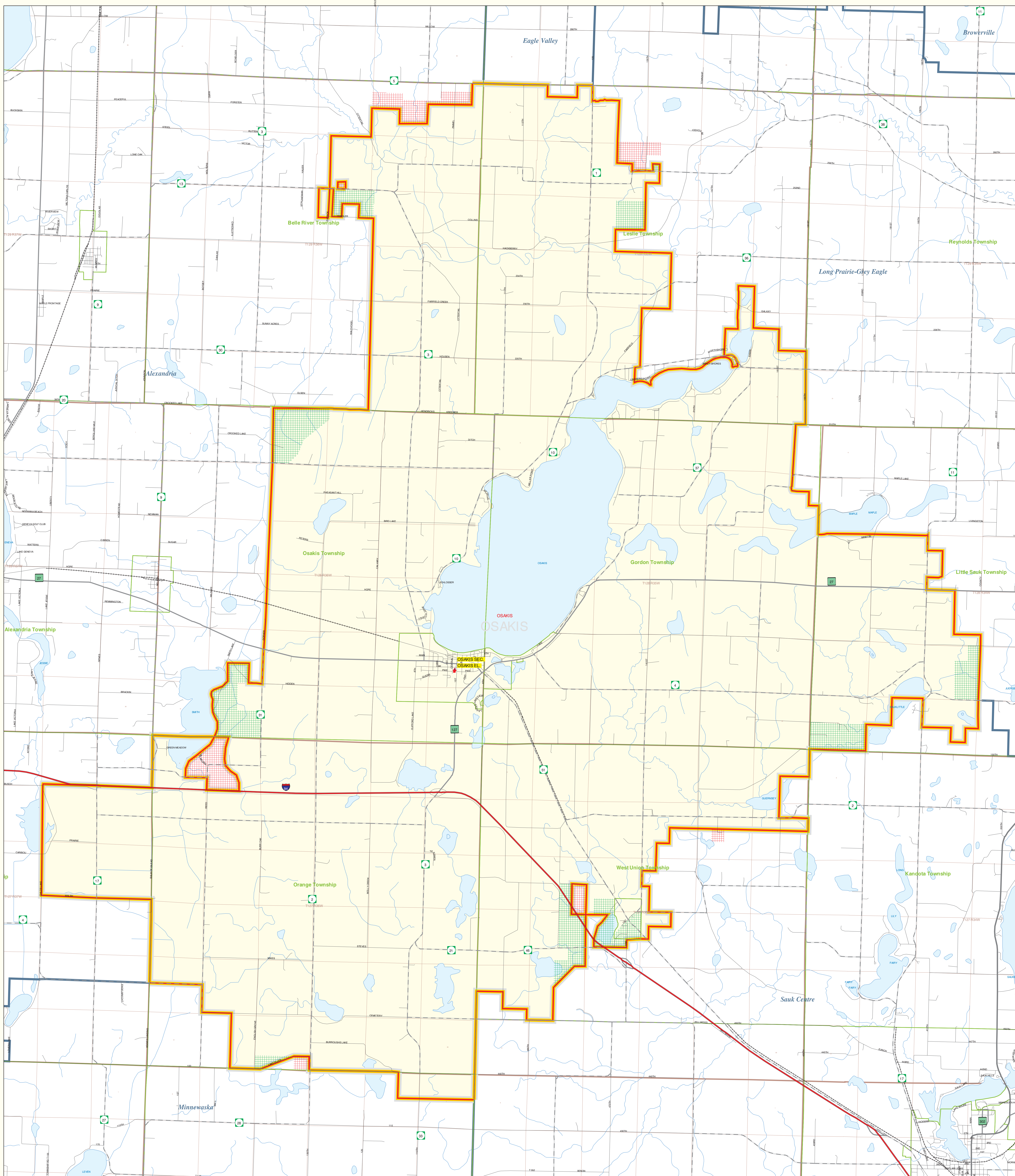
# Public School District Attendance Areas and Educational Facility Locations

SY 2003 - 2004

Osakis

Map 1 of 1

School District Number 213



### Public Educational Facilities or Programs<sup>1</sup>

- Elementary
- \* Middle/Junior
- ♦ High/Secondary

### Public School Attendance Areas<sup>1</sup>

- Elementary School Attendance Area **ELEM**
- Middle School Attendance Area **MIDD**
- High School Attendance Area **HIGH**

### Public School Districts<sup>2</sup>

- ISD 213
- Other

### Other Features<sup>2,4</sup>

- Interstate Highway
- U.S. Highway
- State Highway
- County Highway
- Road/Street
- Railroad
- Stream
- Lake/Pond
- Minor Civil Division<sup>3</sup>  
(Cities, Townships and Unorganized areas)
- Public Land Survey Township / Range<sup>5</sup>
- Public Land Survey Section<sup>5</sup>
- District Boundary changes - Areas ADDED to DISTRICT
- District Boundary changes - Areas SUBTRACTED from DISTRICT

For SY03-04, School District officials were asked to review and modify the U.S. Bureau of the Census boundary to reflect their knowledge. These additions/deletions may not have been coordinated with adjacent districts. Please see this map's "Data Sources" section for more details.

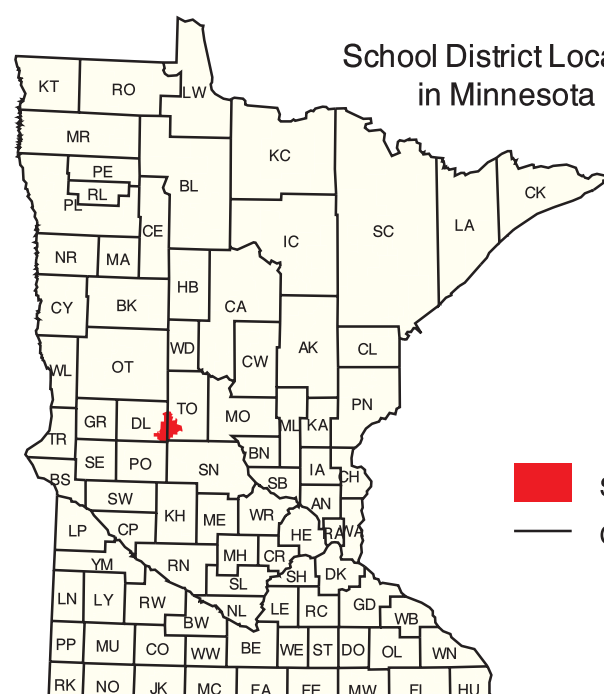
### Data Sources:

- <sup>1</sup> Land Management Information Center
- <sup>2</sup> U.S. Bureau of the Census / MN Legislative GIS Office<sup>6</sup> (with modifications requested by school districts)
- <sup>3</sup> Legislative GIS Office, 2001 (and School Districts)
- <sup>4</sup> The Lawrence Group, Inc., 2004 (Twin Cities metropolitan area only)

**PLEASE NOTE:** The school district boundary appearing on this map was prepared for the Department of Education. It does not necessarily represent the legal boundary of the district. It is a generalization of boundaries drawn on maps in the late 1980s by county officials and modified by the U.S. Bureau of the Census, most recently for Census 2000. For the academic year 2003/2004, LMIC asked school officials to review maps of the Census Bureau's district boundary and indicate areas they felt were in error. Their additions/deletions may not have been coordinated with adjacent school districts. Please contact your county's auditor or assessor to obtain an accurate legal description of the boundary.

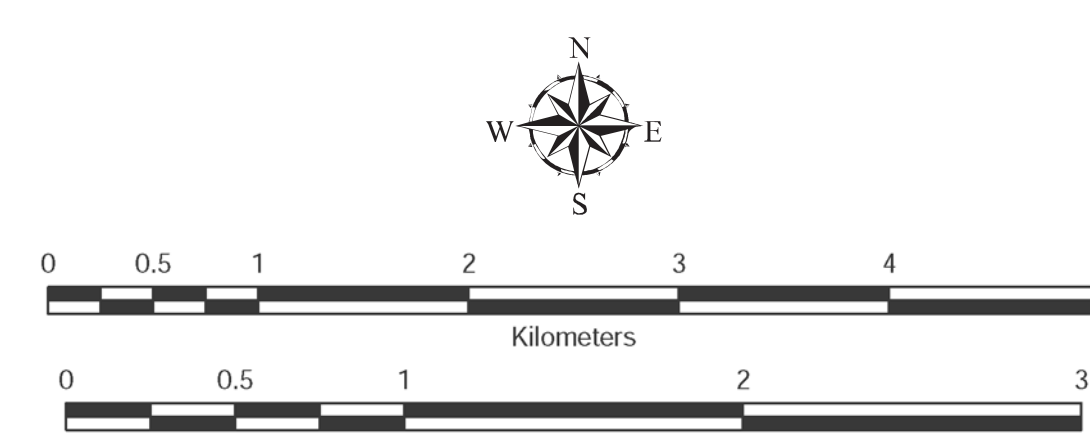
### Liability Statement

The Minnesota Department of Education, Food & Nutrition Service (MDE-FNS) and Land Management Information Center (LMIC) do not warrant the results or accuracy of any data, including any errors or omissions, or any damages, incidental or special damages, including any lost profits or lost savings, even if MDE or LMIC representative has been advised of the possibility of such damages or any other claim by any third party.



School District Location in Minnesota

- School District
- County Boundary



For further assistance with this map, contact:  
 MN Department of Education  
 Food and Nutrition Service  
 1500 Highway 36 West  
 Roseville, MN 55113-4286  
 Phone: (651) 582-8526  
 (800) 369-6922  
 Fax: (651) 582-8501

Scott Freiburg  
 Land Management Information Center  
 658 Cedar Street  
 Centennial Building, Room 330  
 St. Paul, MN 55115  
 Phone: (651) 296-6600  
 Fax: (651) 296-1212  
 Email: scott.freiburg@state.mn.us

Prepared for the Department of Education-Food & Nutrition Service by the Dept. of Administration's Land Management Information Center.  
 Map Information:  
 Account Code: 73713209  
 File Name: w2131  
 Acrobat (.pdf), Printer (.ps) & Graphics (.eps)  
 File Location: c:\mde\mde\mde\_maps\graphics\mde