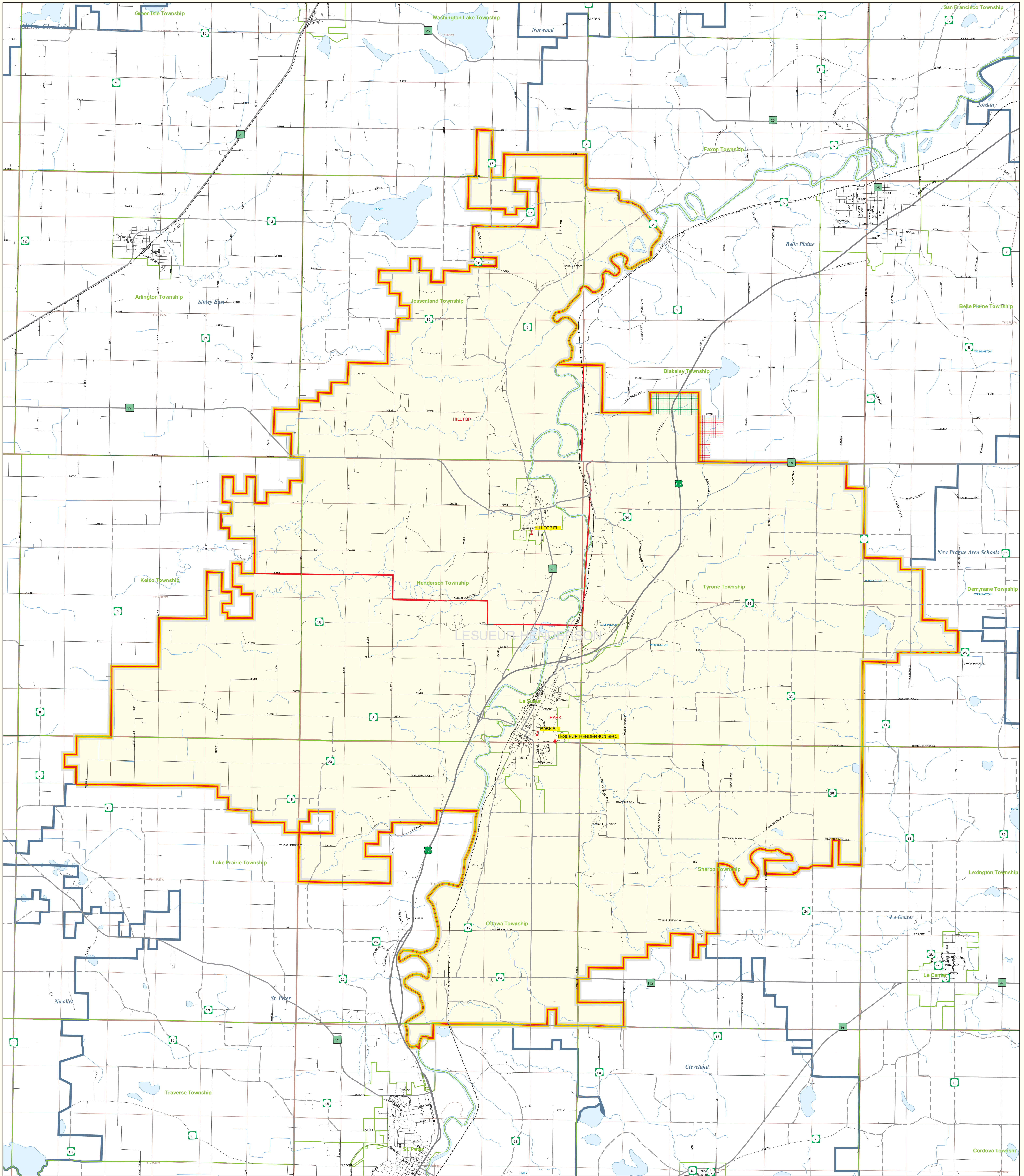


Public School District Attendance Areas and Educational Facility Locations Le Sueur-Henderson School District Number 2397

SY 2003 - 2004

Map 1 of 1



Public Educational Facilities or Programs¹

- Elementary
- * Middle/Junior
- ◆ High/Secondary

Public School Attendance Areas¹

- Elementary School Attendance Area **ELEM**
- Middle School Attendance Area **MIDD**
- High School Attendance Area **HIGH**

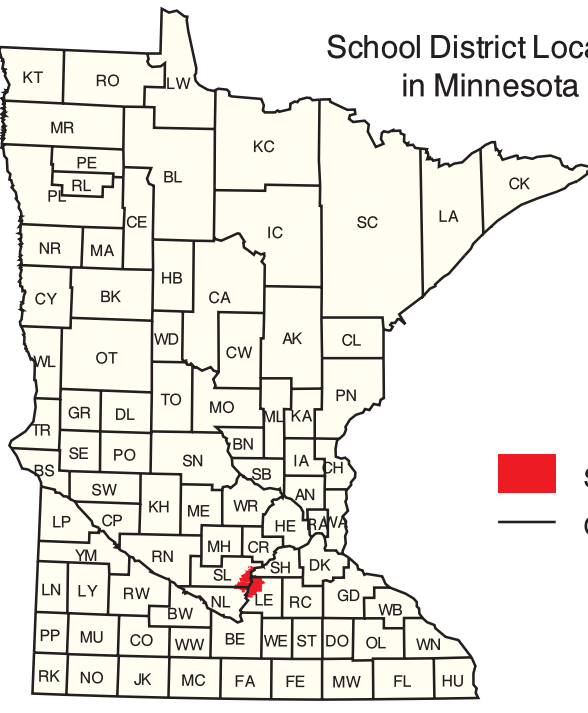
Public School Districts²

- ISD 2397
- Other

Other Features^{2,4}

- Interstate Highway
- U.S. Highway
- State Highway
- County Highway
- Road/Street
- Railroad
- Stream
- Lake/Pond
- Minor Civil Division³
(Cities, Townships and Unorganized areas)
- Public Land Survey Township / Range⁵
- Public Land Survey Section⁵
- District Boundary changes - Areas ADDED to DISTRICT
- District Boundary changes - Areas SUBTRACTED from DISTRICT

For SY03-04, School District officials were asked to review and modify the U.S. Bureau of the Census boundary to reflect their knowledge. These additional decisions may not have been coordinated with adjacent districts. Please see the map's "Data Sources" section for more details.



School District
County Boundary

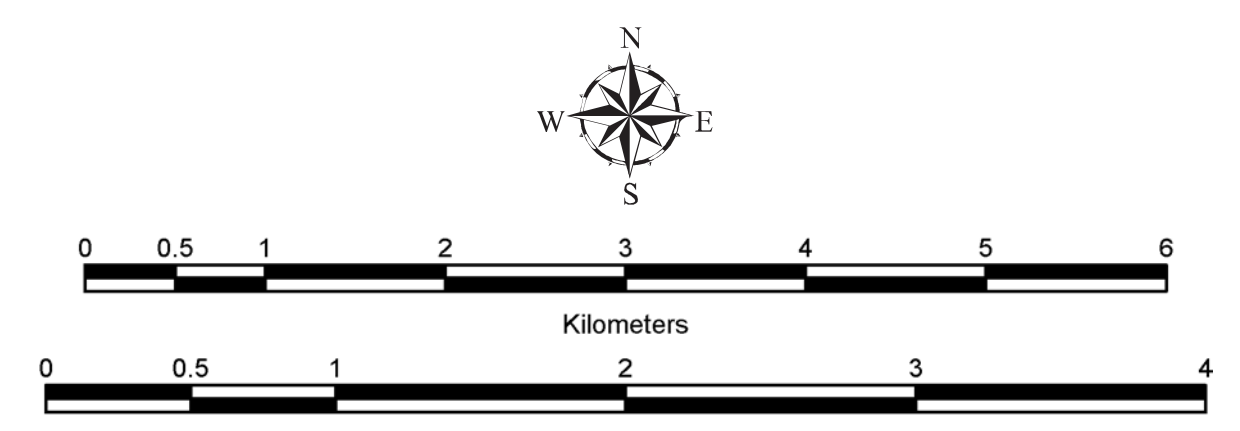
Data Sources:

- ¹ Land Management Information Center
- ² U.S. Bureau of the Census / MN Legislative GIS Office⁶ (with modifications requested by school districts)
- ³ Legislative GIS Office, 2001 (and School Districts)
- ⁴ The Lawrence Group, Inc., 2004
- ⁵ Twin Cities metropolitan area only

PLEASE NOTE: The school district boundary appearing on this map was prepared for the Department of Education. It does not necessarily represent the legal boundary of the district. It is a generalization of boundaries drawn on maps in the late 1980s by county officials and modified by the U.S. Bureau of the Census, most recently for Census 2000. For the academic year 2003/2004, LMIC asked school officials to review maps of the Census Bureau's district boundary and indicate areas they felt were in error. Their additional decisions may not have been coordinated with adjacent school districts. Please contact your county's auditor or assessor to obtain an accurate legal description of the boundary.

Liability Statement

The Minnesota Department of Education, Food & Nutrition Service (MDE-FNS) and Land Management Information Center (LMIC) do not warrant the results or implied warranties, including warranties of merchantability and fitness, in its use of MDE or LMIC facilities for any commercial, incidental or special damages, including any lost profits or lost savings, even if MDE or LMIC representative has been advised of the possibility of such damages or any other claim by any third party.



Minnesota
Department of Education

For further assistance with this map, contact:

<p>MN Department of Education Food and Nutrition Service 1500 Highway 36 West Roseville, MN 55113-4286</p> <p>Phone: (651) 582-8526 (800) 366-6922 Fax: (651) 582-8501</p>	<p>Scott Freiburg Land Management Information Center 658 Cedar Street Centennial Building, Room 330 St. Paul, MN 55105</p> <p>Phone: (651) 296-6600 Fax: (651) 296-1212 Email: scott.freiburg@state.mn.us</p>
--	---

Prepared for the Department of Education-Food & Nutrition Service by the Dept. of Administration's Land Management Information Center.

Map Information:

Account Code: 05/05/04
Account Code: 73713209
File Name: v42397
Author: (pdf) Printer: (ps) & Graphics: (eps)
File Location: c:\mde\dmis\2405_map\mapgraphics\lmi