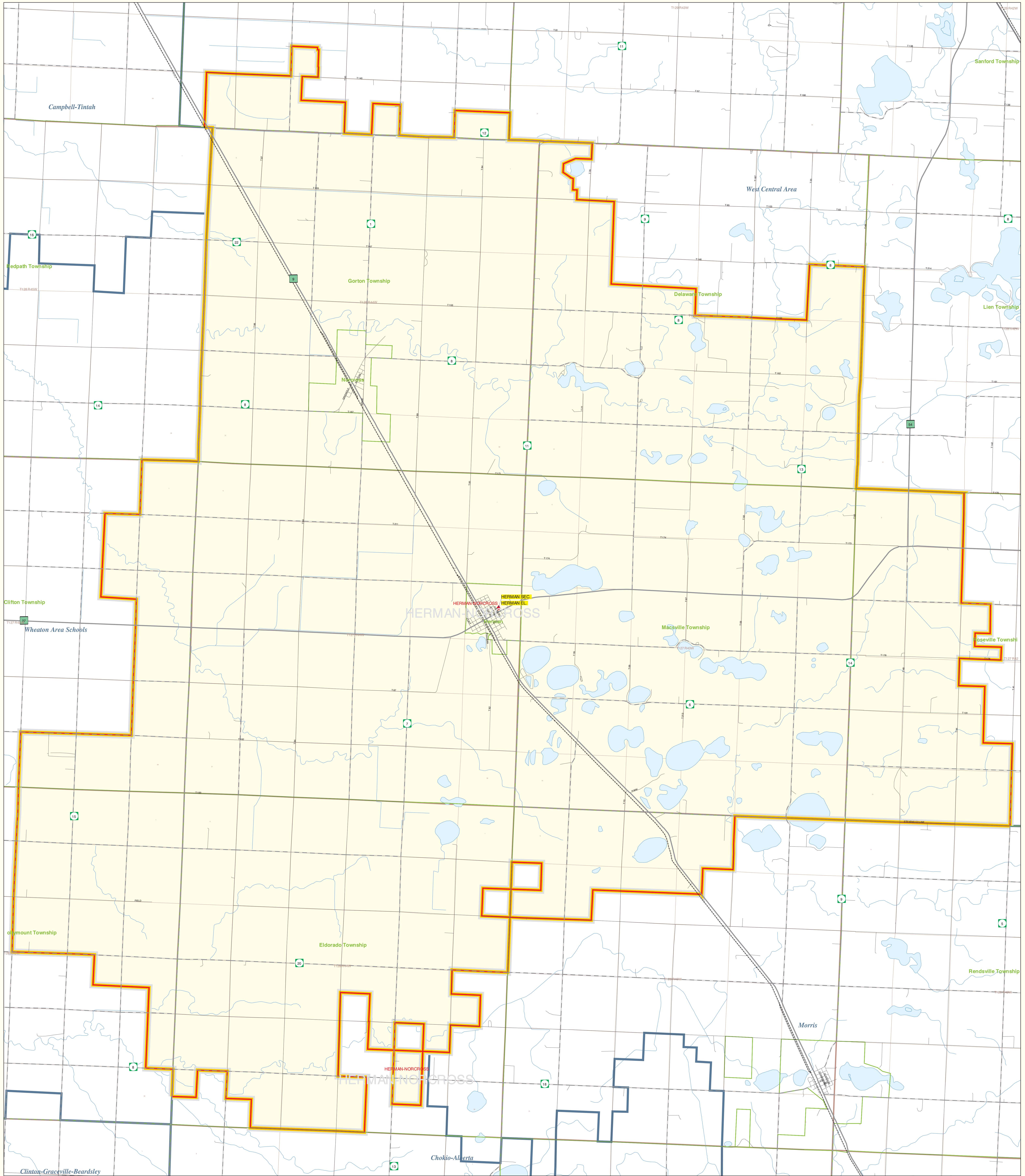


Public School District Attendance Areas and Educational Facility Locations Herman-Norcross School District Number 264

SY 2003 - 2004

Map 1 of 1



Public Educational Facilities or Programs¹

- Elementary
- * Middle/Junior
- ◆ High/Secondary

Public School Attendance Areas¹

- Elementary School Attendance Area **ELEM**
- Middle School Attendance Area **MIDD**
- High School Attendance Area **HIGH**

Public School Districts²

- ISD 264
- Other

Other Features^{2,4}

- Interstate Highway
- U.S. Highway
- State Highway
- County Highway
- Road/Street
- Railroad
- Stream
- Lake/Pond
- Minor Civil Division³
(Cities, Townships and Unorganized areas)
- Public Land Survey Township / Range⁵
- Public Land Survey Section⁵

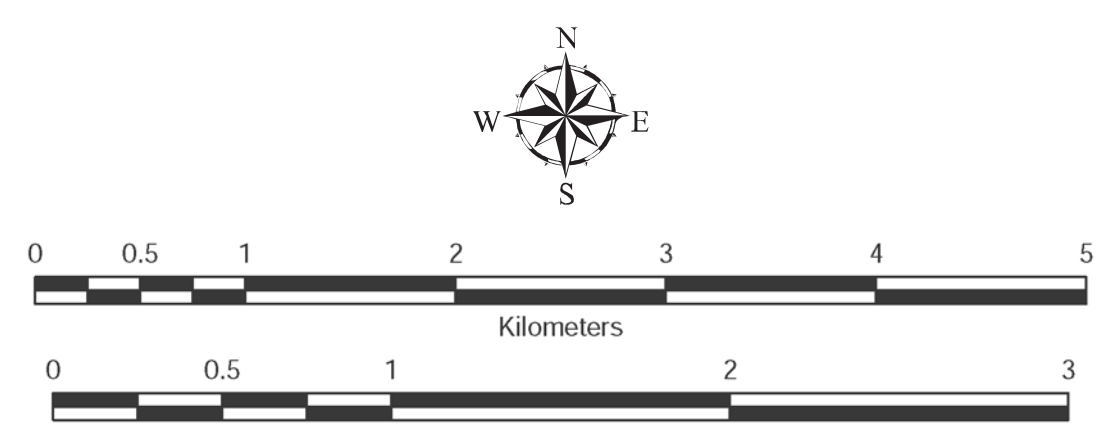
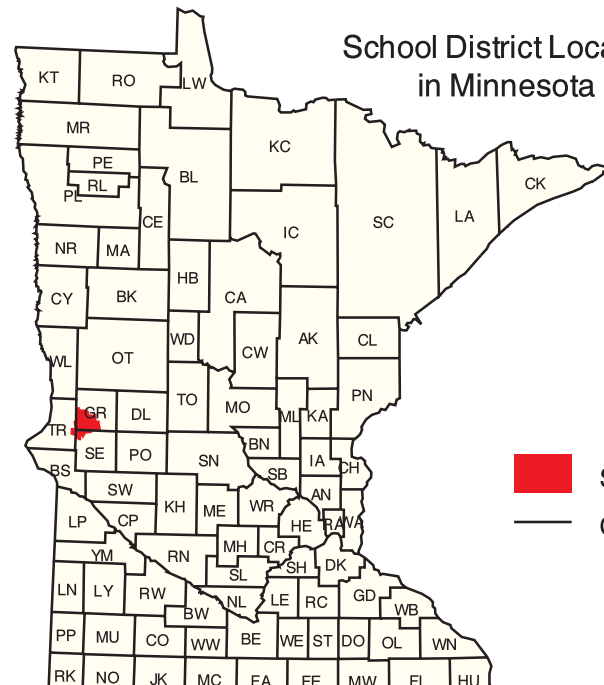
Data Sources:

- ¹ Land Management Information Center
- ² U.S. Bureau of the Census / MN Legislative GIS Office⁶ (with modifications requested by school districts)
- ³ Legislative GIS Office, 2001 (and School Districts)
- ⁴ The Lawrence Group, Inc., 2004
- ⁵ Twin Cities metropolitan area only

PLEASE NOTE: The school district boundary appearing on this map was prepared for the Department of Education. It does not necessarily represent the legal boundary of the district. It is a generalization of boundaries drawn on maps in the late 1980s by county officials and modified by the U.S. Bureau of the Census, most recently for Census 2000. For the academic year 2003/2004, LMC asked school officials to review maps of the Census Bureau's district boundary and indicate areas they felt were in error. Their additional corrections may not have been coordinated with adjacent school districts. Please contact your county's auditor or assessor to obtain an accurate legal description of the boundary.

Liability Statement

The Minnesota Department of Education, Food & Nutrition Service (MDE-FNS) and Land Management Information Center (LMC) do not warrant the results you may obtain by using this map. The map is provided as a reference and does not constitute a contract or implied warranty, including any loss of profits or loss of savings, even if MDE or LMC representative has been advised of the possibility of such damages or any other claim by any third party.



Minnesota Department of Education

For further assistance with this map, contact:

MN Department of Education Food and Nutrition Service 1500 Highway 36 West Roseville, MN 55113-4286 Phone: (651) 582-8536 (800) 366-6922 Fax: (651) 582-8501	Scott Freiburg Land Management Information Center 658 Cedar Street Centennial Building, Room 330 St. Paul, MN 55115 Phone: (651) 296-6600 Fax: (651) 296-1212 Email: scott.freiburg@state.mn.us
--	--

Prepared for the Department of Education-Food & Nutrition Service by the Dept. of Administration's Land Management Information Center.
 Map Information:
 Map Created on 05/04/04
 Account Code: 73713209
 File Name: v0304
 Acrobat (.pdf), Printer (.ps) & Graphics (.eps)
 File Location: c:\mde\info\2004_mapping\graphics\lmc