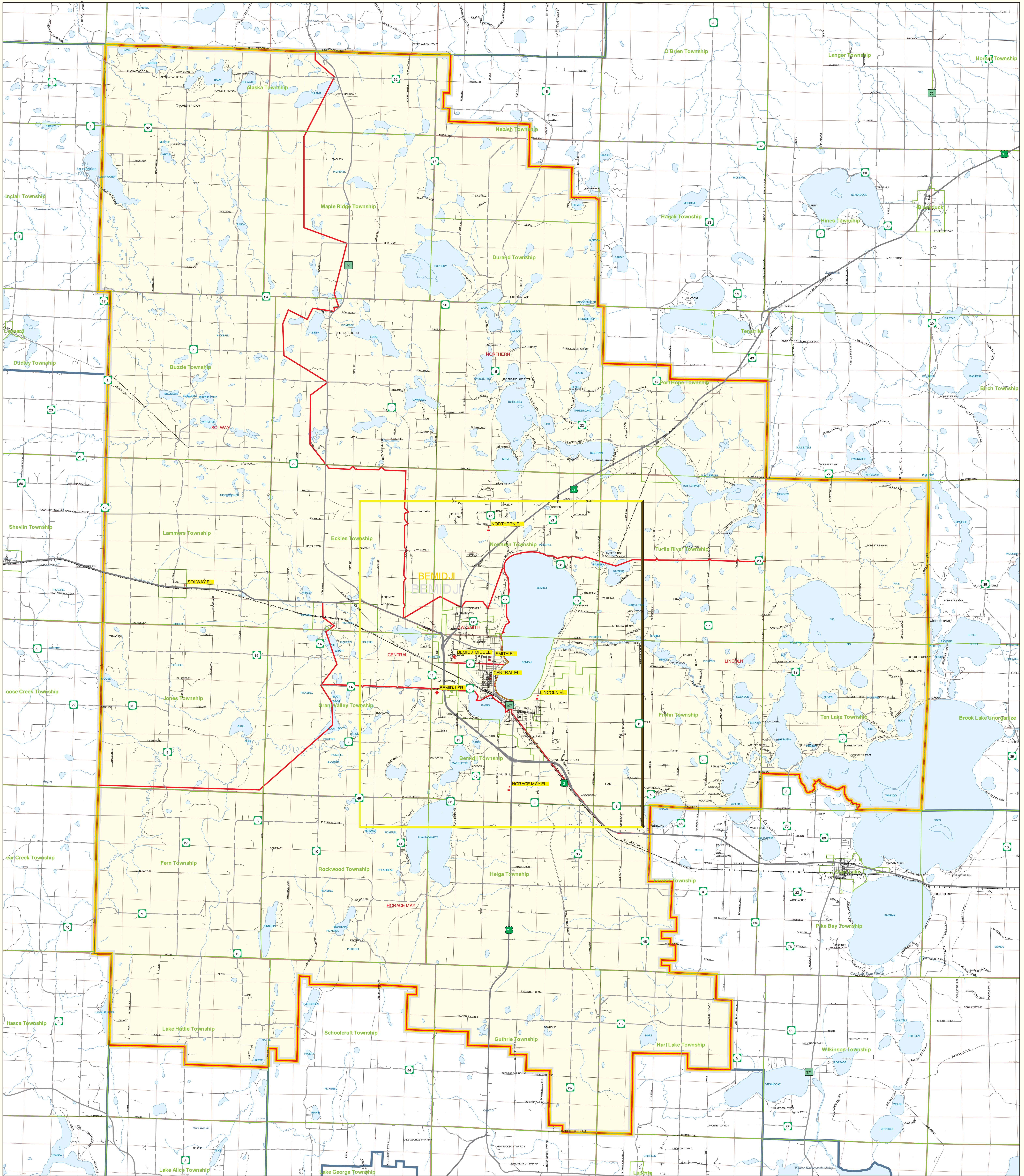


# Public School District Attendance Areas and Educational Facility Locations Bemidji School District Number 31

SY 2003 - 2004

Map 1 of 2



**Public Educational Facilities or Programs<sup>1</sup>**

- Elementary
- Middle/Junior
- High/Secondary

**Public School Attendance Areas<sup>1</sup>**

- Elementary School Attendance Area **ELEM**
- Middle School Attendance Area **MIDD**
- High School Attendance Area **HIGH**

**Public School Districts<sup>2</sup>**

- ISD 31
  - Other
- See Map 2 for a more detailed view of this area.

**Other Features<sup>2,4</sup>**

- Interstate Highway
- U.S. Highway
- State Highway
- County Highway
- Road/Street
- Railroad
- Stream
- Lake/Pond
- Minor Civil Division<sup>3</sup>  
(Cities, Townships and Unorganized areas)
- Public Land Survey Township / Range<sup>5</sup>
- Public Land Survey Section<sup>5</sup>

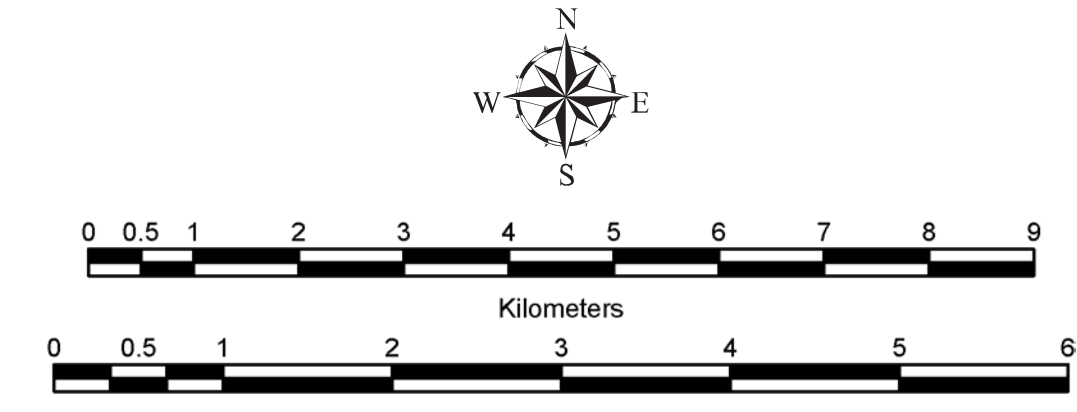
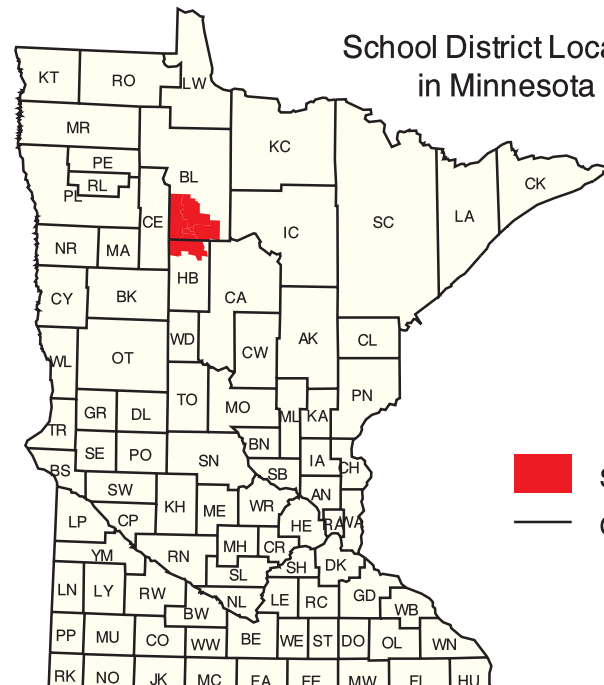
**Data Sources:**

- <sup>1</sup> Land Management Information Center
- <sup>2</sup> U.S. Bureau of the Census / MN Legislative GIS Office<sup>6</sup> (with modifications requested by school districts)
- <sup>3</sup> Legislative GIS Office, 2001 (and School Districts)
- <sup>4</sup> The Lawrence Group, Inc., 2004
- <sup>5</sup> Twin Cities metropolitan area only

**PLEASE NOTE:** The school district boundary appearing on this map was prepared for the Department of Education. It does not necessarily represent the legal boundary of the district. It is a generalization of boundaries drawn on maps in the late 1980s by county officials and modified by the U.S. Bureau of the Census, most recently for Census 2000. For the academic year 2003/2004, LMC asked school officials to review maps of the Census Bureau's district boundary and indicate areas they felt were in error. Their additional corrections may not have been coordinated with adjacent school districts. Please contact your county's auditor or assessor to obtain an accurate legal description of the boundary.

**Liability Statement**

The Minnesota Department of Education, Food & Nutrition Service (MDE-FNS) and Land Management Information Center (LMC) do not warrant the results or implied warranties, including warranties of merchantability and fitness for a particular purpose, for any computer, incident or special damages, including any lost profits or lost savings, even if MDE or LMC representative has been advised of the possibility of such damages or any other claim by any third party.



Minnesota Department of Education

For further assistance with this map, contact:

MN Department of Education Food and Nutrition Service 1500 Highway 36 West Roseville, MN 55113-4286	Scott Freiburg Land Management Information Center 658 Cedar Street Centennial Building, Room 330 St. Paul, MN 55105
Phone: (651) 582-8536 (800) 369-6922 Fax: (651) 582-8501	Phone: (651) 296-6600 Fax: (651) 296-1212 Email: scott.freiburg@state.mn.us

Prepared for the Department of Education-Food & Nutrition Service by the Dept. of Administration's Land Management Information Center.

Map Information:  
 Account Code: 05/04/04  
 Account Code: 73713209  
 File Name: 0431  
 Author: (pdf), Printer: (ps) & Graphics: (eps)  
 File Location: c:\mde\0431\_map\mapgraphics.tul