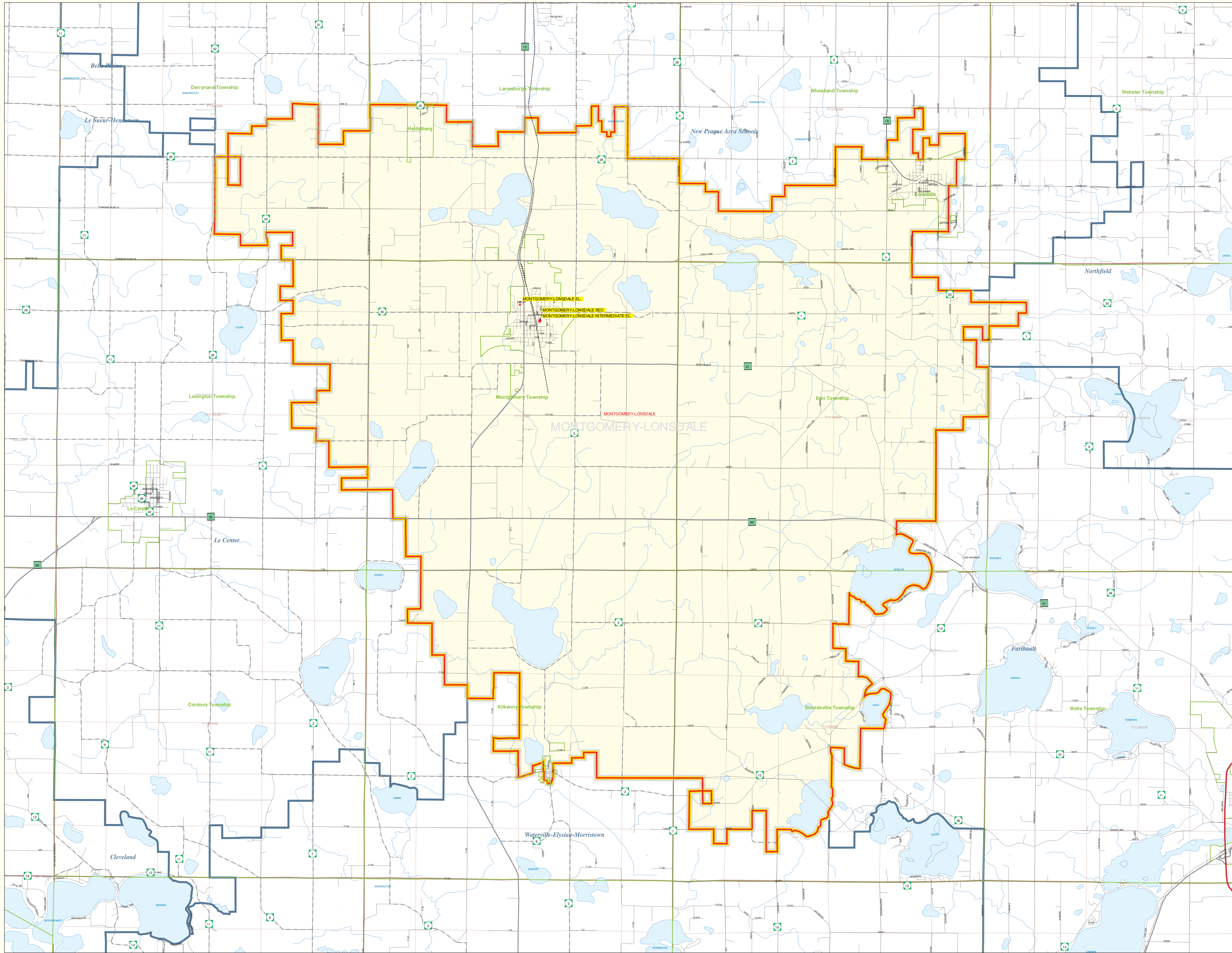


Public School District Attendance Areas
and Educational Facility Locations

Montgomery-Lonsdale
School District Number 394

SY 2003 - 2004
Map 1 of 1



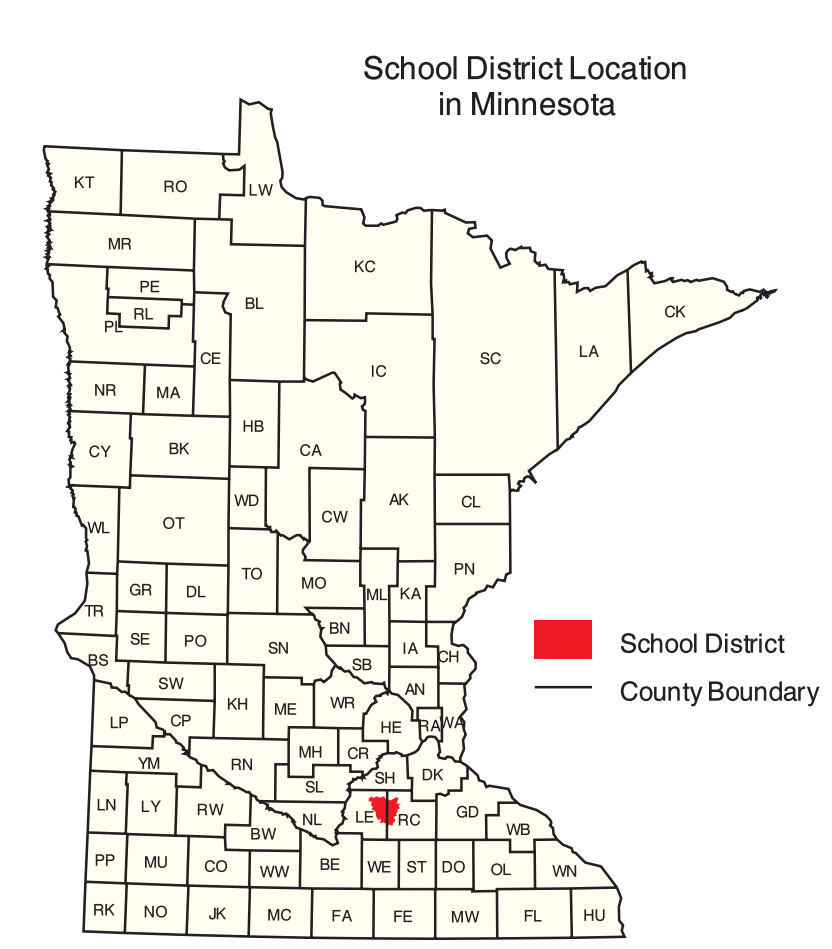
- Public Educational Facilities or Programs¹**
- Elementary
 - Middle/Junior
 - High/Secondary

- Public School Attendance Areas¹**
- Elementary School Attendance Area ELEM
 - Middle School Attendance Area MIDD
 - High School Attendance Area HIGH

- Public School Districts²**
- ISD 394
 - Other

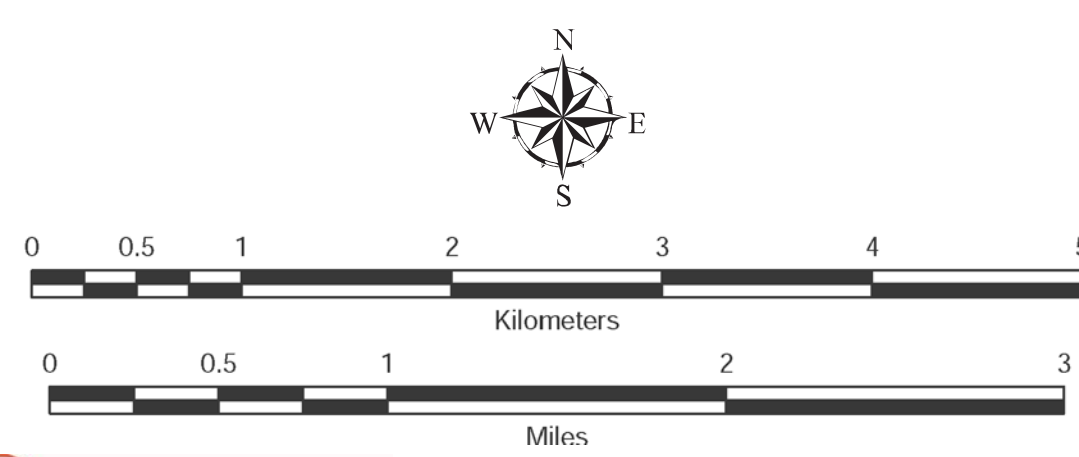
- Other Features^{2,4}**
- Interstate Highway
 - U.S. Highway
 - State Highway
 - County Highway
 - Road/Street
 - Railroad
 - Stream
 - Lake/Pond
 - Minor Civil Division³
(Cities, Townships and Unorganized areas)
 - Public Land Survey Township / Range¹
 - Public Land Survey Section¹

Data Sources:
¹ Land Management Information Center
² U.S. Bureau of the Census / MN Legislative GIS Office³
 (with modifications requested by school districts)
³ Legislative GIS Office, 2001 (and School Districts)
⁴ The Lawrence Group, Inc., 2004
 (Twin Cities metropolitan area only)



Liability Statement
 The Minnesota Department of Education, Food & Nutrition Service (MDE-FNS) and Land Management Information Center (LMIC) do not warrant the results you may obtain by using this map. This map is provided "as is" without any warranty, express or implied, including warranties of merchantability and fitness for a particular purpose. The user assumes all responsibility for any consequences, including any loss of profits or loss of savings, even if MDE or LMIC representatives have been advised of the possibility of such damages or any other claim by any third party.

PLEASE NOTE: The school district boundary appearing on this map was prepared for the Department of Education. It does not necessarily represent the legal boundary of the district. It is a generalization of boundaries drawn on maps in the late 1990s by county officials and modified by the U.S. Bureau of the Census, most recently by Census 2000. For the academic year 2003/2004, LMIC asked school officials to review maps of the Census Bureau's district boundary and indicate areas they felt were in error. Their additional deletions may not have been coordinated with adjacent school districts. Please contact your county's auditor or assessor to obtain an accurate legal description of the boundary.



Minnesota Department of Education
 Prepared for the Department of Education Food & Nutrition Service by the Dept. of Administration's Land Management Information Center.

Map Information:
 Map Created on: 05/04/04
 Account Code: 7313093
 File Name: mde04
 Printer: eps, Printer (eps) & Graphics (eps)
 File Location: c:\mde04\mde_mapping\graphics\mde04

For further assistance with this map, contact:

MN Department of Education Food & Nutrition Service 1500 Highway 58 West Roseville, MN 55113-4266 Phones: (651) 582-8528 (800) 366-8922 Fax: (651) 582-8501	Scott Feburg Land Management Information Center 658 Cedar Street Centennial Building, Room 300 St. Paul, MN 55115 Phones: (651) 296-6600 Fax: (651) 296-1212 email: scott.feurg@state.mn.us
---	--