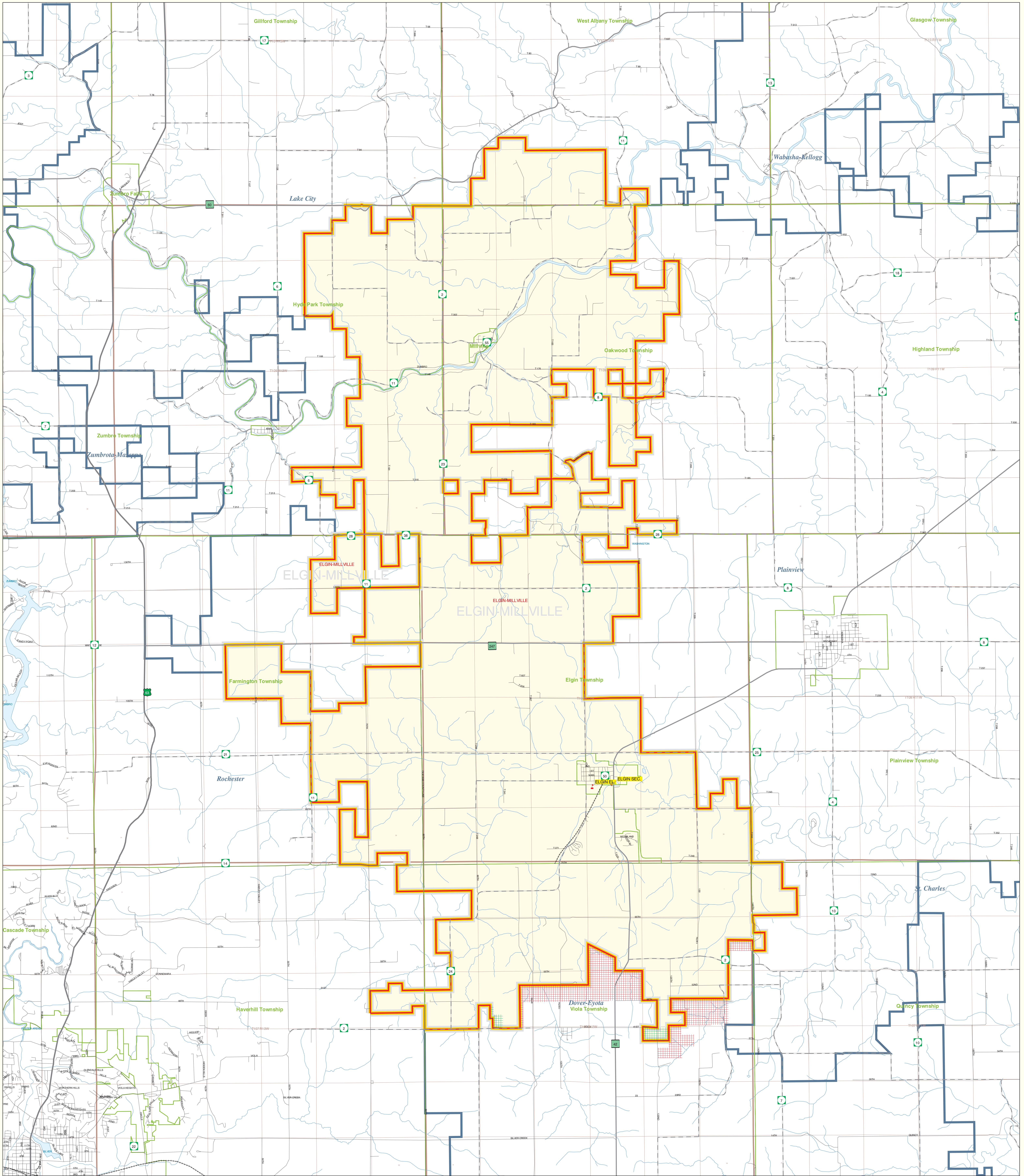


Public School District Attendance Areas and Educational Facility Locations Elgin-Millville School District Number 806

SY 2003 - 2004

Map 1 of 1



Public Educational Facilities or Programs¹

- Elementary
- ★ Middle/Junior
- ◆ High/Secondary

Public School Attendance Areas¹

- Elementary School Attendance Area **ELEM**
- Middle School Attendance Area **MIDD**
- High School Attendance Area **HIGH**

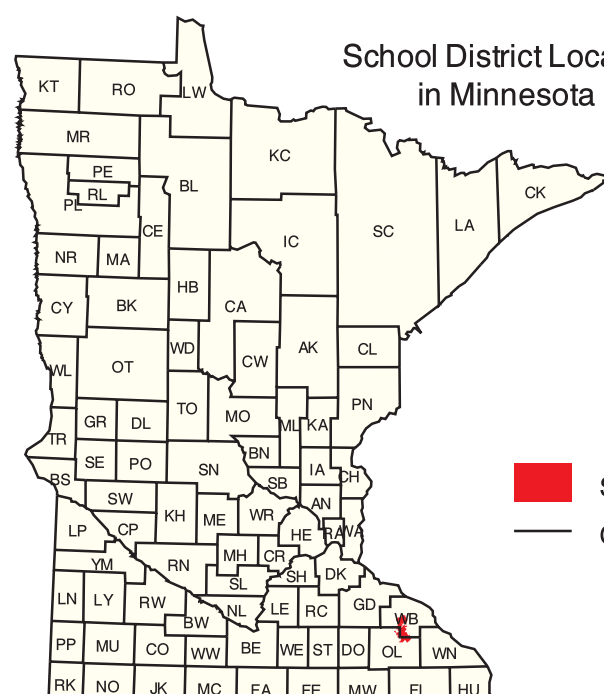
Public School Districts²

- ISD 806
- Other

Other Features^{2,4}

- Interstate Highway
- U.S. Highway
- State Highway
- County Highway
- Road/Street
- Railroad
- Stream
- Lake/Pond
- Minor Civil Division³
(Cities, Townships and Unorganized areas)
- Public Land Survey Township / Range³
- Public Land Survey Section³
- District Boundary changes - Areas ADDED to DISTRICT
- District Boundary changes - Areas SUBTRACTED from DISTRICT

For SY03-04, School District officials were asked to review and modify the U.S. Bureau of the Census boundary to reflect their knowledge. These additional decisions may not have been coordinated with adjacent districts. Please see the map's "Data Sources" section for more details.



School District Location in Minnesota

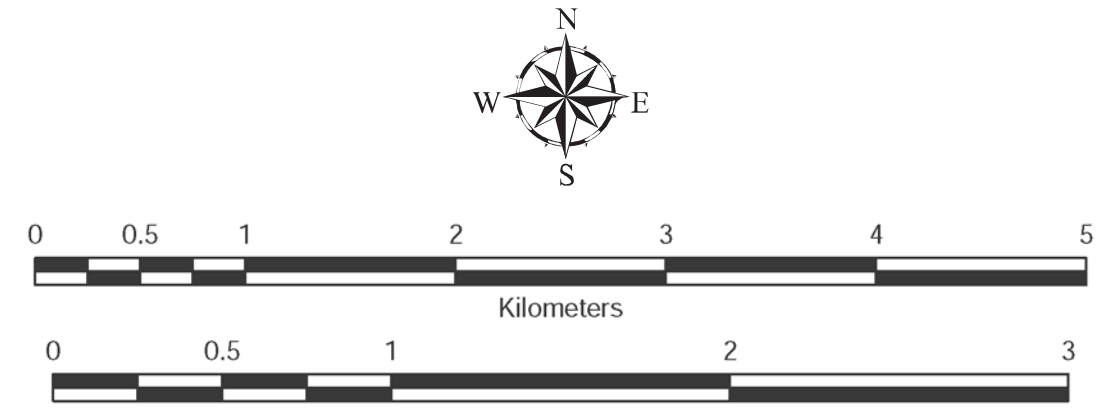
Data Sources:

- ¹ Land Management Information Center
- ² U.S. Bureau of the Census / MN Legislative GIS Office³ (with modifications requested by school districts)
- ³ Legislative GIS Office, 2001 (and School Districts)
- ⁴ The Lawrence Group, Inc., 2004 (Twin Cities metropolitan area only)

PLEASE NOTE: The school district boundary appearing on this map was prepared for the Department of Education. It does not necessarily represent the legal boundary of the district. It is a generalization of boundaries drawn on maps in the late 1980s by county officials and modified by the U.S. Bureau of the Census, most recently for Census 2000. For the academic year 2003/2004, LMIC asked school officials to review maps of the Census Bureau's district boundary and indicate areas they felt were in error. Their additional decisions may not have been coordinated with adjacent school districts. Please contact your county's auditor or assessor to obtain an accurate legal description of the boundary.

Liability Statement

The Minnesota Department of Education, Food & Nutrition Service (MDE-FNS) and Land Management Information Center (LMIC) do not warrant the results or implied warranties, including warranties of merchantability, fitness for a particular purpose, or non-infringement, in any way, for any damages, incidental or special damages, including any lost profits or lost savings, even if MDE or LMIC representative has been advised of the possibility of such damages or any other claim by any third party.



For further assistance with this map, contact:
 MN Department of Education
 Food and Nutrition Service
 1500 Highway 36 West
 Roseville, MN 55113-4286
 Phone: (651) 582-8526
 (800) 369-6922
 Fax: (651) 582-8501

Scott Freiburg
 Land Management Information Center
 658 Cedar Street
 Centennial Building, Room 330
 St. Paul, MN 55115
 Phone: (651) 296-6600
 Fax: (651) 296-1212
 Email: scott.freiburg@state.mn.us

Prepared for the Department of Education-Food & Nutrition Service by the Dept. of Administration's Land Management Information Center.
 Map Information:
 Account Code: 05/05/04
 Account Code: 7373209
 File Name: 05/05
 Acrobat (.pdf), Printer (.ps) & Graphics (.eps)
 File Location: c:\mde\0405_map\graphics\lmi