

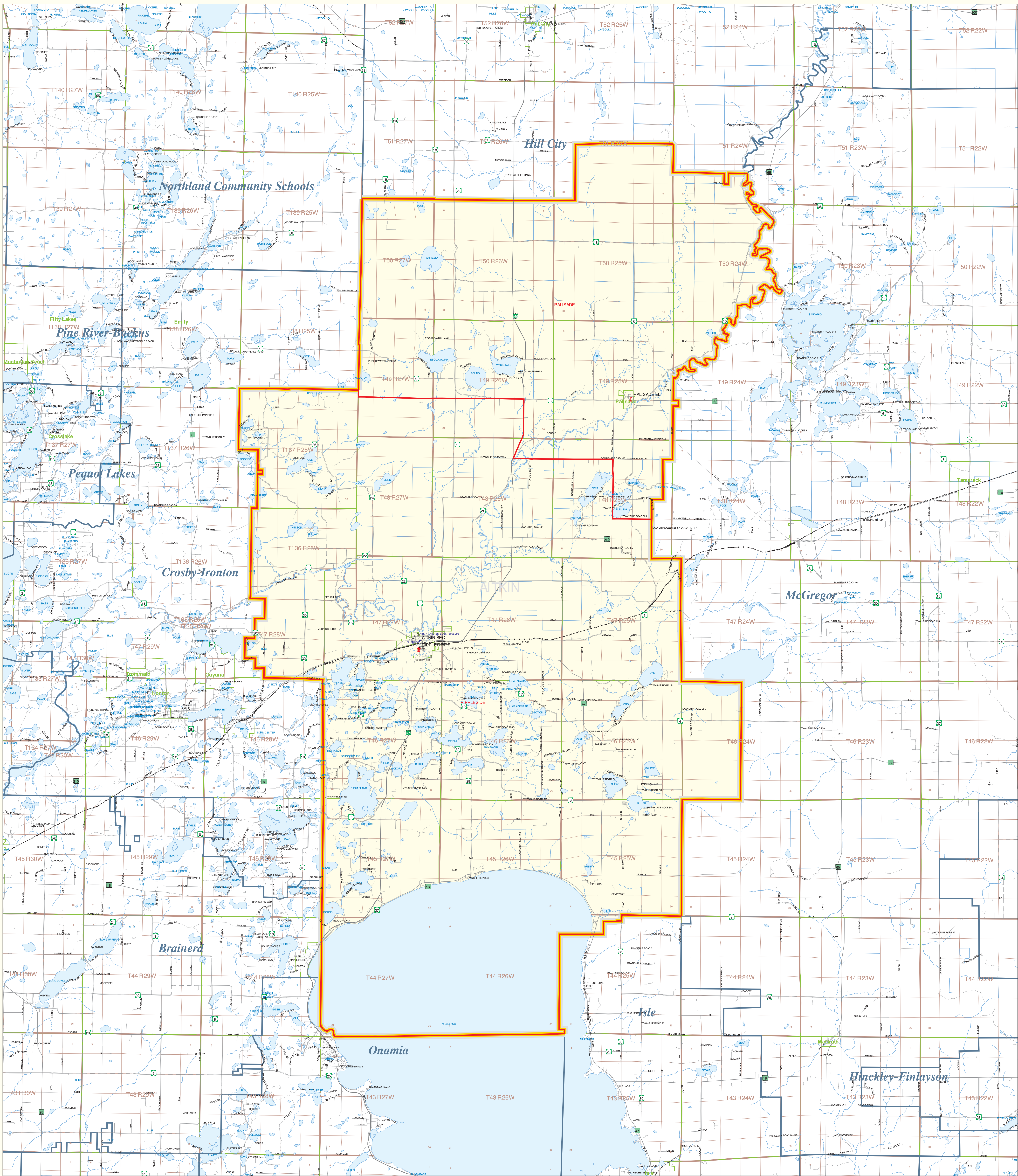
Public School District Attendance Areas and Educational Facility Locations

SY 2006 - 2007

Aitkin

School District Number 1

Map 1 of 1



Public Educational Facilities or Programs¹

- * Elementary
- * Middle/Junior
- * High/Secondary
- * Non-Public or Public Charter school

Public School Attendance Areas¹

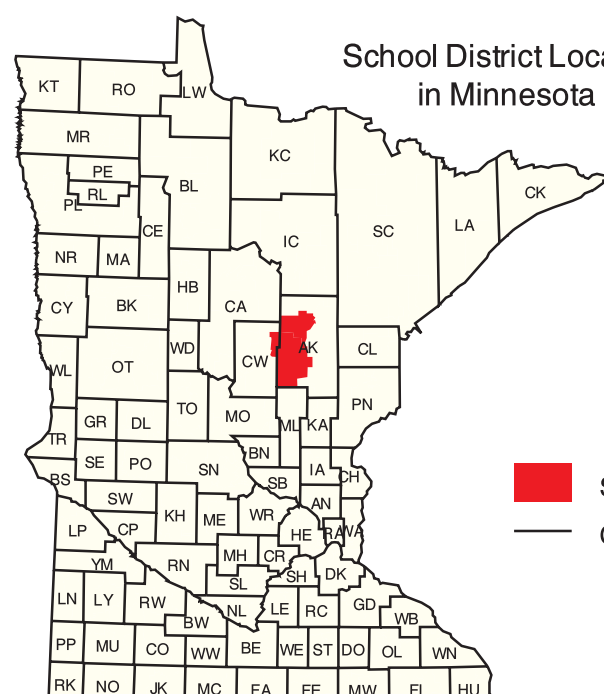
- Elementary School Attendance Area **ELEM**
- Middle School Attendance Area **MIDD**
- High School Attendance Area **HIGH**

Public School Districts¹

- ISD 1
- Other

Other Features^{2,4}

- Interstate Highway
- U.S. Highway
- State Highway
- County Highway
- Road/Street
- Railroad
- Stream
- Lake/Pond
- Minor Civil Division³
(Cities, Townships and Unorganized areas)
- Public Land Survey Township / Range³
- Public Land Survey Section³



School District Location in Minnesota

■ School District

County Boundary

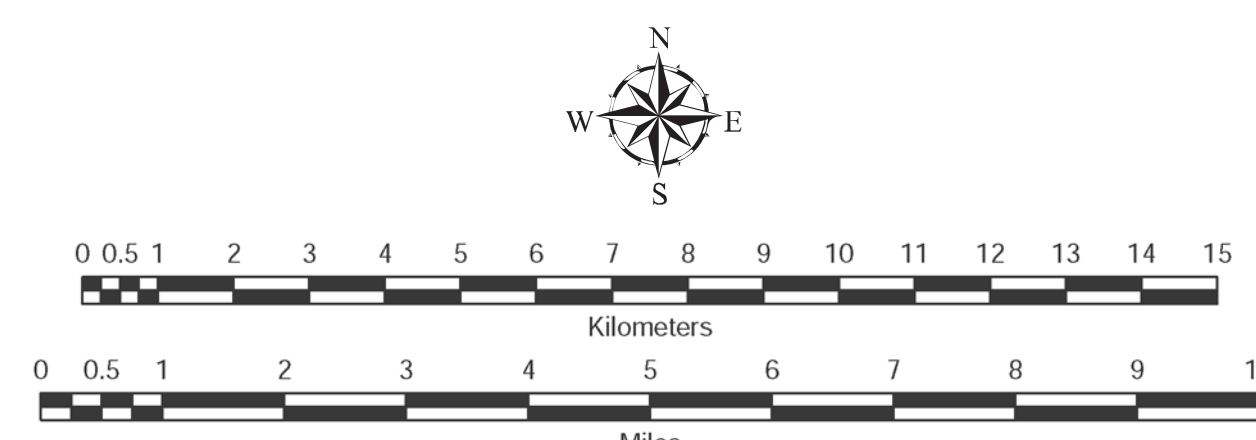
Data Sources:

- ¹ Land Management Information Center
- ² U.S. Bureau of the Census (MN Legislative GIS Office³ with modifications requested by school districts)
- ³ Legislative GIS Office, 2001 (and School Districts)
- ⁴ The Lawrence Group, Inc., 2005

PLEASE NOTE: The school district boundary appearing on this map was prepared for the Department of Education. It does not necessarily represent the legal boundary of the district. It is a generalization of boundaries drawn on maps in the late 1980s by county officials and modified by the U.S. Bureau of the Census, most recently for Census 2000. For the academic year 2005/2007, LMC asked school officials to review maps of the Census Bureau's district boundary and indicate areas they felt were in error. Their additional deletions may not have been coordinated with adjacent school districts. Please contact your county's auditor or assessor to obtain an accurate legal description of the boundary.

Liability Statement

The Minnesota Department of Education, Food & Nutrition Service (MDE-FNS) and Land Management Information Center (LMC) do not warrant the results or implied warranties, including warranties of merchantability and fitness, in any event with MDE or LMC liable for any consequences, incidental or special damages, including any lost profits or lost savings, even if MDE or LMC representative has been advised of the possibility of such damages or any other claim by any third party.



For further assistance with this map, contact:

MN Department of Education
Food and Nutrition Service
1500 Highway 36 West
Roseville, MN 55113-4286

Scott Freiburg
Land Management Information Center
658 Cedar Street
Centennial Building, Room 330
St. Paul, MN 55115

Phone: (651) 582-8536
(800) 368-6922
Fax: (651) 582-8501

Phone: (651) 201-3485
Fax: (651) 296-3698
Email: scott.freiburg@state.mn.us

Prepared for the Department of Education Food & Nutrition Service by the Dept. of Administration's Land Management Information Center.

Map Information:
Map Created on 11/27/06
Account Code: 73713396
File Name: 087
Aurora (pdf), Printer (ps) & Graphics (eps)
File Location: c:\mde\lmc\mapingraph\mde\