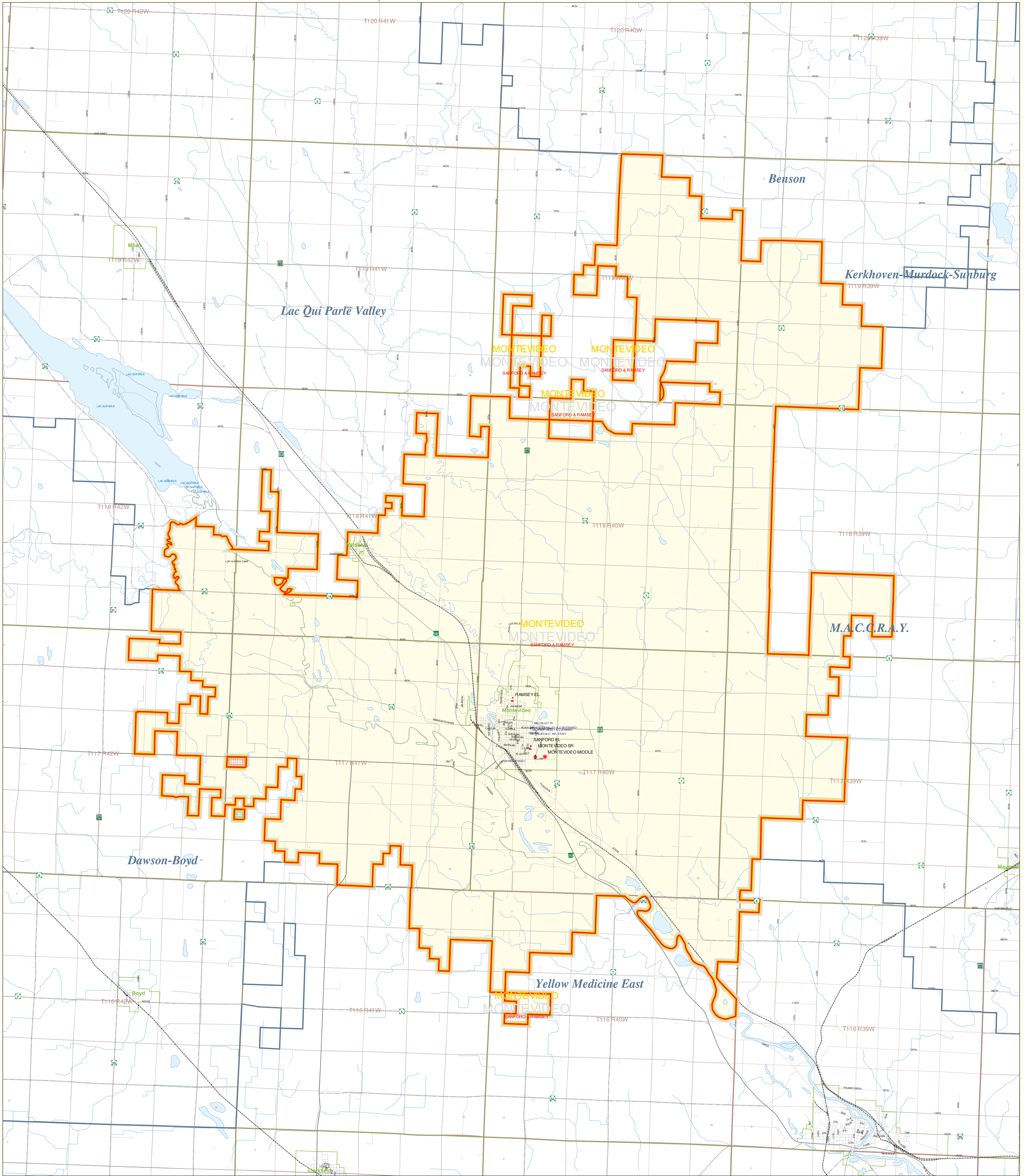


# Public School District Attendance Areas and Educational Facility Locations Montevideo School District Number 129

SY 2006 - 2007

Map 1 of 1



#### Public Educational Facilities or Programs<sup>1</sup>

- Elementary
- \* Middle/Junior
- ♦ High/Secondary
- Non-Public or Public Charter school

#### Public School Attendance Areas<sup>1</sup>

- Elementary School Attendance Area **ELEM**
- Middle School Attendance Area **MIDD**
- High School Attendance Area **HIGH**

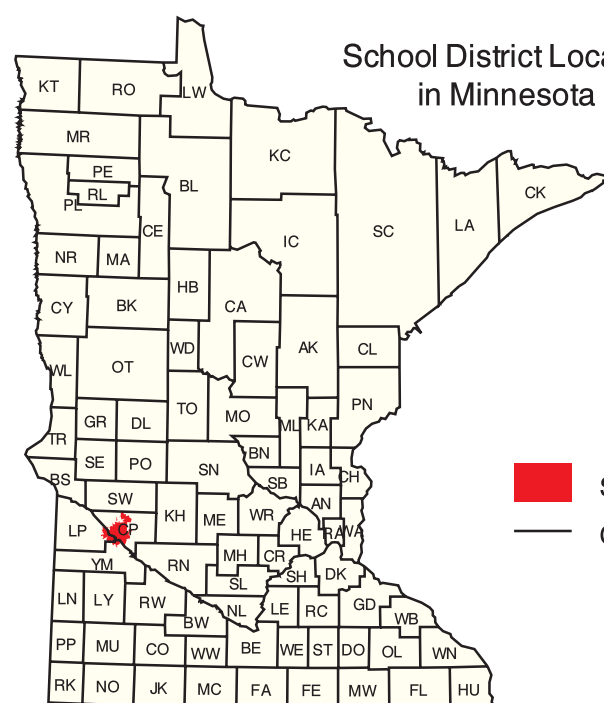
#### Public School Districts<sup>1</sup>

- ISD 129
- Other

#### Other Features<sup>2,4</sup>

- Interstate Highway
- U.S. Highway
- State Highway
- County Highway
- Road/Street
- Railroad
- Stream
- Lake/Pond
- Minor Civil Division<sup>3</sup>  
(Cities, Townships and Unorganized areas)
- Public Land Survey Township / Range<sup>3</sup>
- Public Land Survey Section<sup>3</sup>
- District Boundary changes - Areas ADDED to DISTRICT
- District Boundary changes - Areas SUBTRACTED from DISTRICT

For SY05-06, School District officials were asked to review and modify the U.S. Bureau of the Census boundary to reflect their knowledge. These additions/deletions may not have been coordinated with adjacent districts. Please see the map's "Data Sources" section for more details.



School District Location in Minnesota

■ School District  
 County Boundary

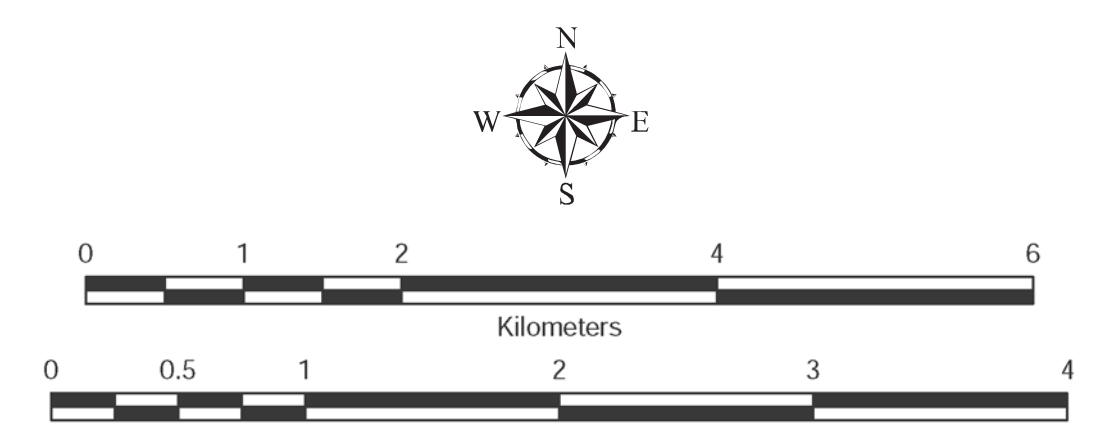
#### Data Sources:

- <sup>1</sup> Land Management Information Center
- <sup>2</sup> U.S. Bureau of the Census (MN Legislative GIS Office<sup>3</sup> with modifications requested by school districts)
- <sup>3</sup> Legislative GIS Office, 2001 (and School Districts)
- <sup>4</sup> The Lawrence Group, Inc., 2005 (Twin Cities metropolitan area only)

**PLEASE NOTE:** The school district boundary appearing on this map was prepared for the Department of Education. It does not necessarily represent the legal boundary of the district. It is a generalization of boundaries drawn on maps in the late 1980s by county officials and modified by the U.S. Bureau of the Census, most recently for Census 2000. For the academic year 2005/2007, LMIC asked school officials to review maps of the Census Bureau's district boundary and indicate areas they felt were in error. Their additional deletions may not have been coordinated with adjacent school districts. Please contact your county's auditor or assessor to obtain an accurate legal description of the boundary.

#### Liability Statement

The Minnesota Department of Education, Food & Nutrition Service (MDE-FNS) and Land Management Information Center (LMIC) do not warrant the results you may obtain by using this map. We are not responsible for any damages, incidental or special damages, including any lost profits or lost savings, even if MDE or LMIC representative has been advised of the possibility of such damages or any other claim by any third party.



For further assistance with this map, contact:

MN Department of Education Food and Nutrition Service 1500 Highway 36 West Roseville, MN 55113-4286	Scott Freiburg Land Management Information Center 658 Cedar Street Centennial Building, Room 330 St. Paul, MN 55105	Phone: (651) 582-8536 (800) 366-6922 Fax: (651) 582-8501	Phone: (651) 201-3485 Fax: (651) 296-3698 Email: scott.freiburg@state.mn.us
--	---	--	---

Prepared for the Department of Education Food & Nutrition Service by the Dept. of Administration's Land Management Information Center.

Map Information:  
Account Code: 73713396  
Map Created on: 11/27/06  
File Name: 08729  
Author: (pdf), Printer: (ps) & Graphics: (eps)  
File Location: c:\mde\lmi\mappings\graphics\lmi