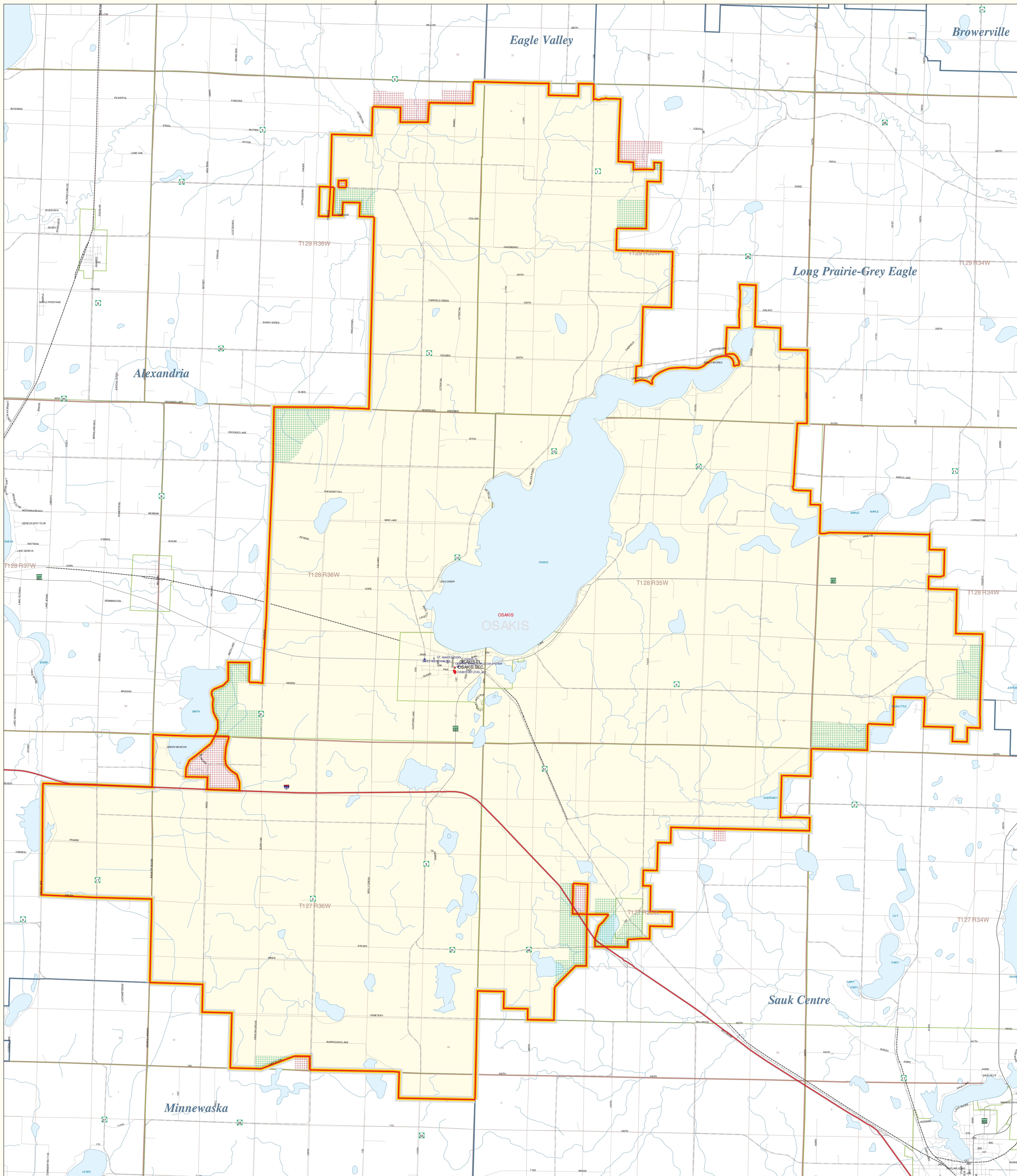


Public School District Attendance Areas and Educational Facility Locations Osakis School District Number 213

SY 2006 - 2007

Map 1 of 1



Public Educational Facilities or Programs¹

- Elementary
- ◆ Middle/Junior
- ◆ High/Secondary
- ◆ Non-Public or Public Charter school

Public School Attendance Areas¹

- Elementary School Attendance Area **ELEM**
- Middle School Attendance Area **MIDD**
- High School Attendance Area **HIGH**

Public School Districts¹

- ISD 213
- Other

Other Features^{2,4}

- Interstate Highway
- U.S. Highway
- State Highway
- County Highway
- Road/Street
- Railroad
- Stream
- Lake/Pond
- Minor Civil Division³
(Cities, Townships and Unorganized areas)
- Public Land Survey Township / Range³
- Public Land Survey Section³
- District Boundary changes - Areas ADDED to DISTRICT
- District Boundary changes - Areas SUBTRACTED from DISTRICT

For SY05-06, School District officials were asked to review and modify the U.S. Bureau of the Census boundary to reflect their knowledge. These additions/deletions may not have been coordinated with adjacent districts. Please see the map's "Data Sources" section for more details.

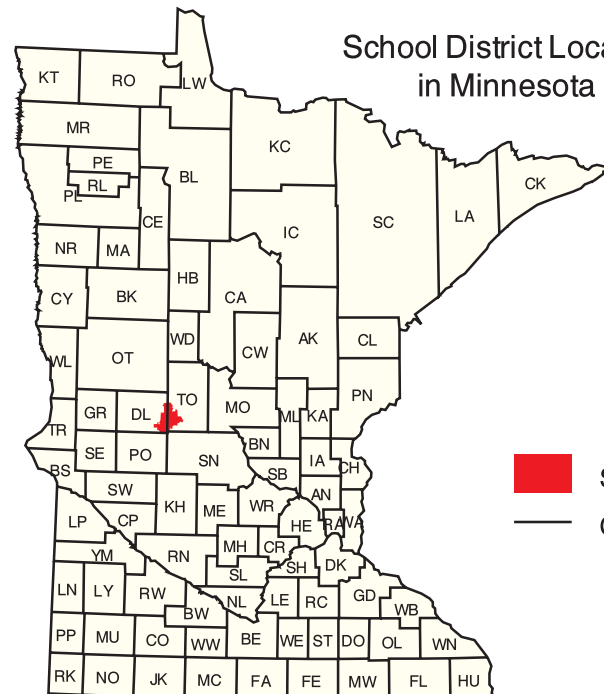
Data Sources:

- ¹ Land Management Information Center
- ² U.S. Bureau of the Census (MN Legislative GIS Office³ with modifications requested by school districts)
- ³ Legislative GIS Office, 2001 (and School Districts)
- ⁴ The Lawrence Group, Inc., 2005 (Twin Cities metropolitan area only)

PLEASE NOTE: The school district boundary appearing on this map was prepared for the Department of Education. It does not necessarily represent the legal boundary of the district. It is a generalization of boundaries drawn on maps in the late 1980s by county officials and modified by the U.S. Bureau of the Census, most recently for Census 2000. For the academic year 2005/2006, LMIC asked school officials to review maps of the Census Bureau's district boundary and indicate areas they felt were in error. Their additions/deletions may not have been coordinated with adjacent school districts. Please contact your county's auditor or assessor to obtain an accurate legal description of the boundary.

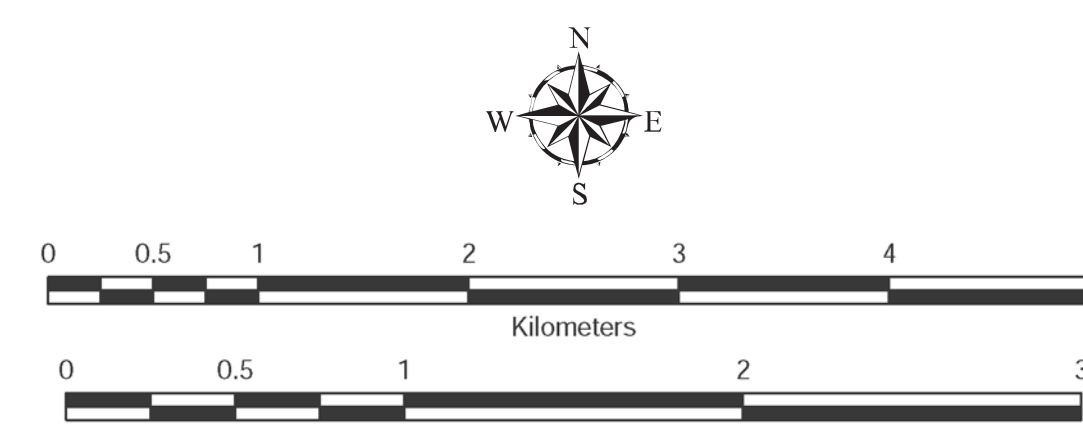
Liability Statement

The Minnesota Department of Education, Food & Nutrition Service (MDE-FNS) and Land Management Information Center (LMIC) do not warrant the results or implied warranties, including warranties of merchantability and fitness, in the event of MDE or LMIC liability for any consequences, incidental or special damages, including any lost profits or lost savings, even if MDE or LMIC representative has been advised of the possibility of such damages or any other claim by any third party.



School District Location in Minnesota

■ School District
— County Boundary



For further assistance with this map, contact:

MN Department of Education Food and Nutrition Service 1500 Highway 36 West Roseville, MN 55113-4286	Scott Freiburg Land Management Information Center 658 Cedar Street Centennial Building, Room 330 St. Paul, MN 55115
Phone: (651) 582-8526 (800) 369-6922 Fax: (651) 582-8501	Phone: (651) 201-3485 Fax: (651) 296-3698 Email: scott.freiburg@state.mn.us

Prepared for the Department of Education/Food & Nutrition Service by the Dept. of Administration's Land Management Information Center.

Map Information:
Map Created on 11/09/06
Account Code: 73713396
File Name: v0213
Author: (pdf), Printer: (ps) & Graphics: (eps)
File Location: c:\mde\lmi\mappings\graphical\