

Public School District Attendance Areas and Educational Facility Locations

**Roseville
623**

Map 1 of 1

Public Educational Facilities or Programs

- Elementary school
- Middle / Junior high school
- High / Secondary school
- School District Office
- Non-Public school
- Public Charter school
- Other School Program (examples)
Area Learning Center (ALC)
Area Learning Program (ALP)
Targeted Services
Correctional
Post-Secondary Education

Public School Attendance Areas

- Elementary School Attendance Area **ELEM**
- Middle School Attendance Area **MIDD**
- High School Attendance Area **HIGH**

Public School Districts

- School District
- Adjacent School District
- INSET - SEE MAP 2 OF 2 (if applicable)

Other Features

- Interstate Highway ²
- U.S. Highway ²
- State Highway ²
- County Highway ²
- Road/Street ²
- Railroad ³
- Stream ⁵
- Lake/Pond ⁶
- Minor Civil Division ⁴
(Cities, Townships and Unorganized areas)
- Public Land Survey Township / Range ³
- Public Land Survey Section ³

Data Sources:

1. Minnesota Department of Education, MN.IT @ Education (2014)
2. Metropolitan Council, 2010, Minnesota Department of Transportation (2004)
3. Minnesota GeoSpatial Information Office
4. U.S. Bureau of the Census, Minnesota Legislative GIS Office (modified to include annexations files with Municipal Board through May 2003)
5. Minnesota Department of Natural Resources

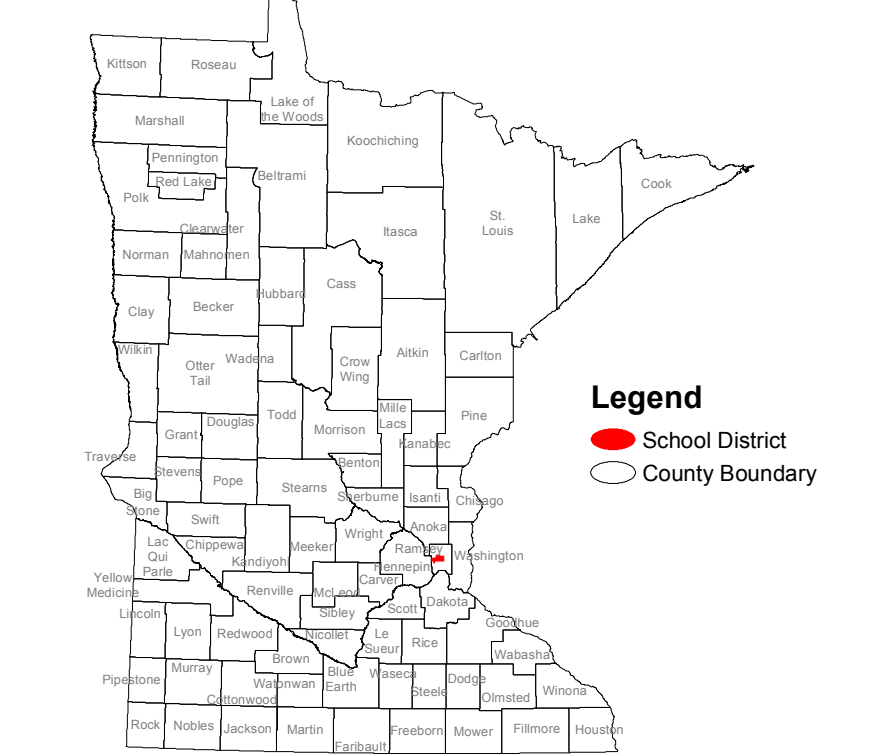
Special Note:

The school district boundary appearing on this map do not necessarily represent the legal boundary of the district. It is a generalization of boundaries drawn on maps in the late 1980's by county officials and modified by the U.S. Bureau of the Census, most recently for Census 2010. Since 2005, district boundaries have been modified by the Dept. of Education based on completed County Parcel information. Please contact your county auditor or assessor to obtain an accurate legal description of the boundary.

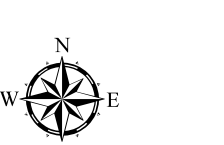
Liability Statement:

The Minnesota Department of Education does not warranty the results you may obtain using this map. This map is provided without express or implied warranties, including warranties of merchantability and fitness. In no event will MDE be liable for any consequential, incidental or special damages, including any lost profits or lost savings, even if an MDE representative has been advised of the possibility of such damages or any other claim by any third party.

School District Location in Minnesota



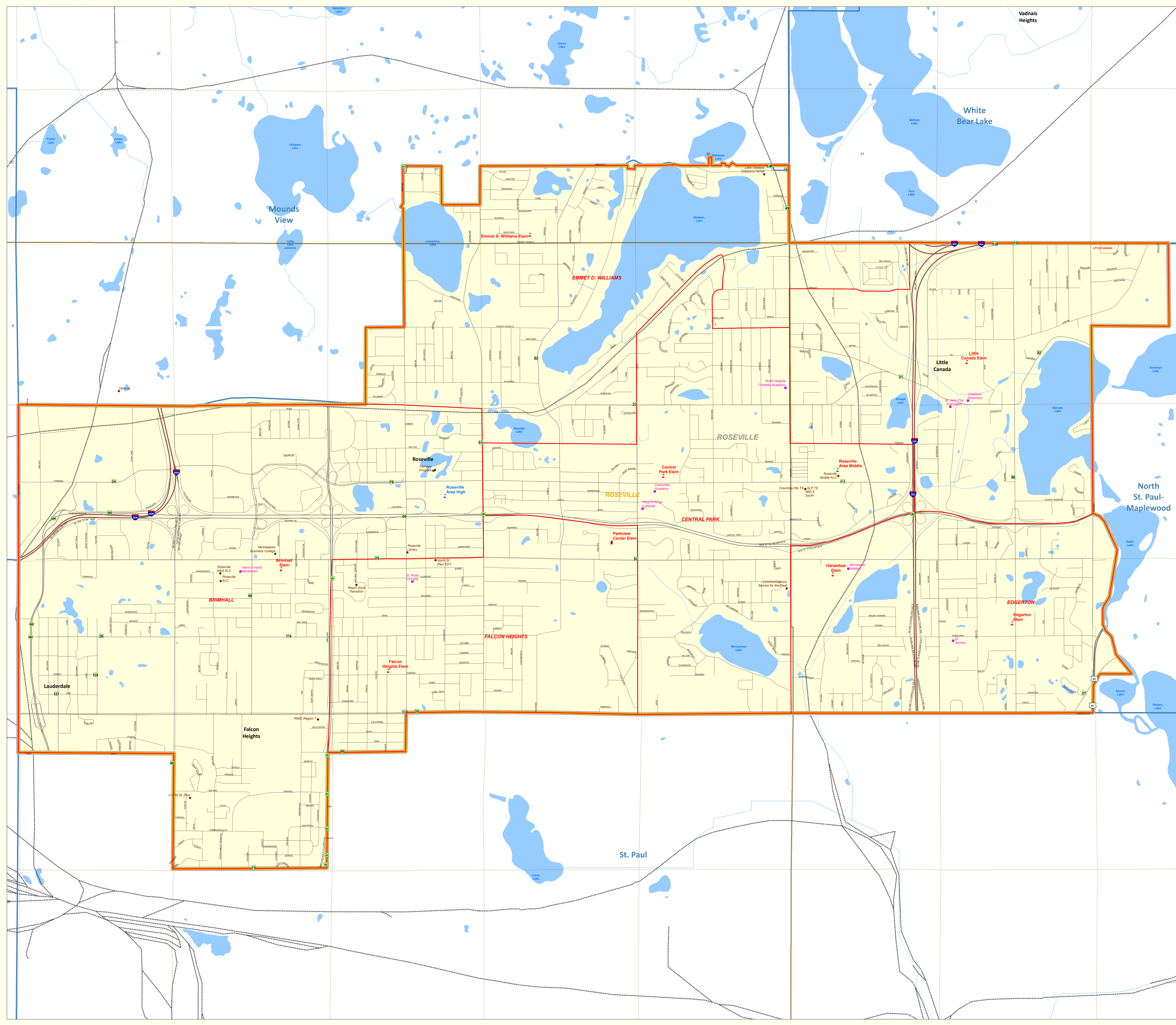
Legend
 School District
 County boundary



1 : 12,000

For further assistance with this map, contact:
 Scott Freburg scott.freburg@state.mn.us
 Jake Stark jake.stark@state.mn.us

Minnesota Department of Education
 MN.IT @ Education
 1500 Highway 36 West
 Roseville, MN 55113
 Map Created: November 2015



Roseville

Public Schools

Brimhall Elem
Central Park Elem
Edgerton Elem
Emmet D. Williams Elem
Falcon Heights Elem
Harambee Elem
Little Canada Elem
Parkview Center Elem
Roseville Area High
Roseville Area Middle

Other Educational Programs

A/O Program
ALP @ Capitol View Center
Assessment Center Elem
Assessment Center Sec
Career And Life Transition Program
Columbia Hts TS
Communications Svc for Deaf
Creative Alternatives Program
East View Academy
Fairview Altern High ALC
Fairview Program
Lake Owasso Childrens Home
Minneapolis Business College
MN Online High I.S.
NE Metro Target 2
North St. Paul ESY
Options
Parkview ECFE
Project Return
Reach Adult Transition
RMIC-Region 7
Roseville Adult ALC
Roseville ALC
Roseville Library
Roseville Middle ALC
School District Office
SLP TS
U of MN-St. Paul
WELS South

Nonpublic Schools

Childrens Discovery
Concordia Academy
Hand in Hand Montessori
King Of Kings Lutheran
Minnesota Waldorf
North Heights Christian Academy
St. Jerome
St. John The Evangelist
St. Rose Of Lima