

MnGeo and GIS at the State of Minnesota

What is GIS?

A Geographic Information System (GIS) is a collection of tools to create, manage, map, and analyze location data. Simply, it is a system of record, visualization and analysis, and engagement using location-based technology and techniques.

Why GIS?

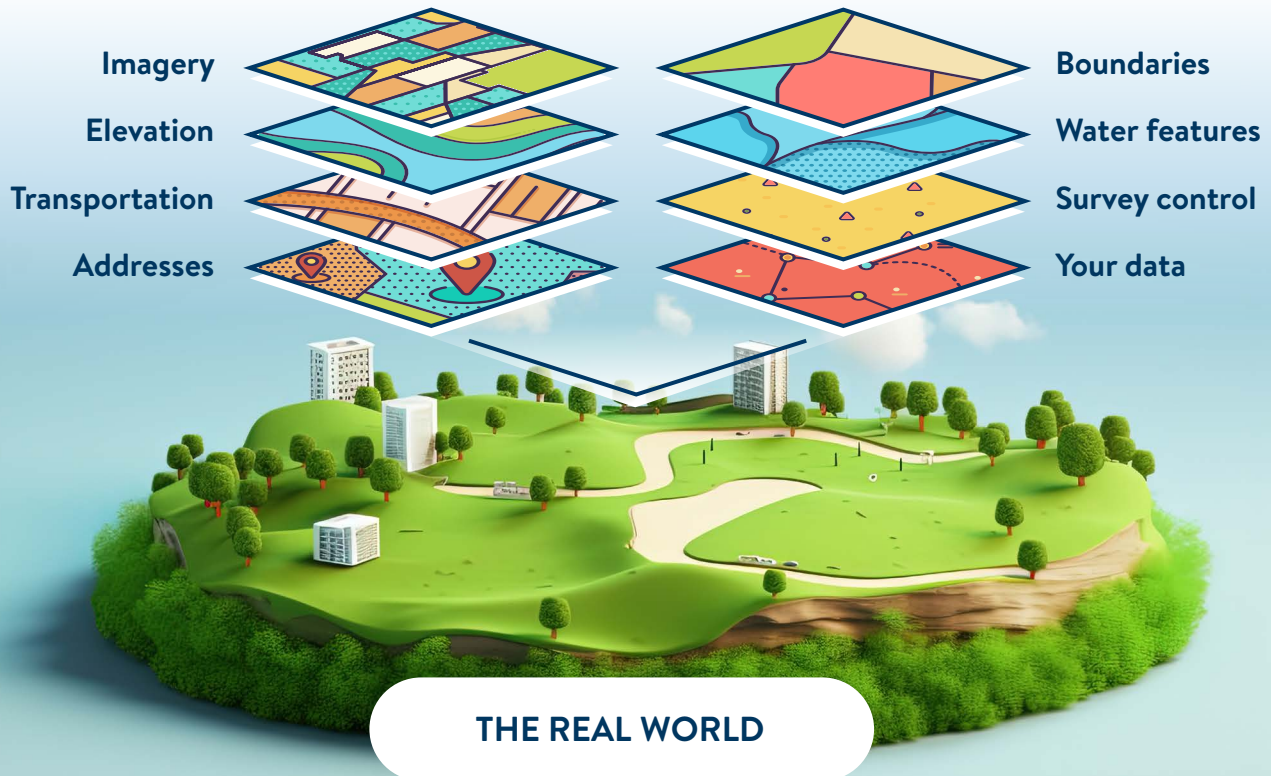
State of Minnesota agencies use GIS for a modern government approach that enhances customer experience and improves the lives of Minnesotans. GIS helps elevate decision-making by using location, a critical aspect to many state services. Including location information as a fundamental part of your data enables a comprehensive analysis that helps you understand the full picture.

Who can help me use GIS?

The Minnesota Geospatial Information Office (MnGeo), in-house agency GIS staff, and MNIT GIS staff partnering with your agency.

Who is MnGeo?

MnGeo leads, guides, and coordinates GIS usage in the state. Part of Minnesota IT Services, we make sure Minnesota state agencies have access to the appropriate spatial tools, data, and analysis techniques to help state government work efficiently and cost-effectively.



MnGeo by the numbers



31

Number of active projects



20

State agencies and boards currently supported



24

Applications currently supported and hosted

How can MnGeo help me?

MnGeo provides GIS data and mapping services to support your agency's mission and Minnesotans.

- Support children and family services
- Facilitate equity and inclusion initiatives
- Understand environmental issues
- Enable transportation planning
- Prepare for and respond to emergencies
- Promote economic development
- Share information and maps with the public
- Study water quality
- Track health issues
- Plan new programs
- Map critical services
- Inventory assets

MnGeo can help you build your capacity to leverage GIS solutions, or we can build it for you.

Consultation

"Take my data and make it location-based"; "Show me the story in my location-based data"

Projects

"Build me an interactive app with my agency's location data"

Services

"Provide me access to GIS software and services"

Example projects and partnerships

- COVID-19 social vulnerability mapping (MDH)
- Geo-enabled elections (Secretary of State)
- Map application and data hosting (MDA, BAH)
- Broadband coverage challenges (DEED)
- Cultural resource inventory (DOT)
- Next Generation 9-1-1 (DPS)

Ready to get started? Contact MnGeo at gisinfo.mngeo@state.mn.us