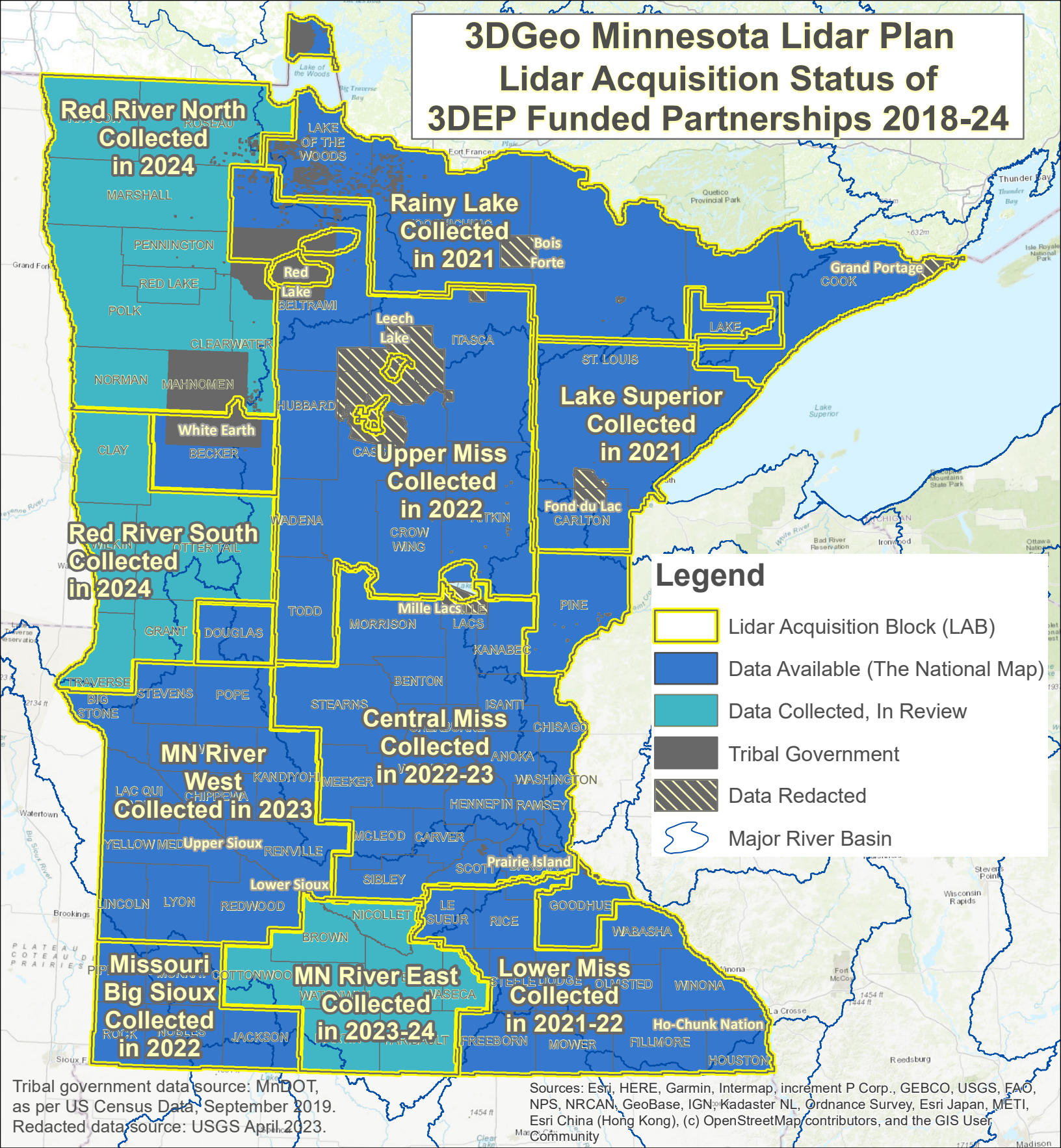


# 3DGeo Minnesota Lidar Plan

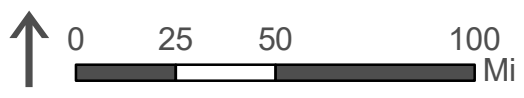
## Lidar Acquisition Status of 3DEP Funded Partnerships 2018-24



Tribal government data source: MnDOT, as per US Census Data, September 2019. Redacted data source: USGS April 2023.

Sources: Esri, HERE, Garmin, Intermap, increment P Corp., GEBCO, USGS, FAO, NPS, NRCAN, GeoBase, IGN, Kadaster NL, Ordnance Survey, Esri Japan, METI, Esri China (Hong Kong), (c) OpenStreetMap contributors, and the GIS User Community

Check the MN Lidar Hub for more information and an up-to-date interactive map:  
<https://lidarhub-minnesota.hub.arcgis.com/>



Map Date: Sept 27, 2024