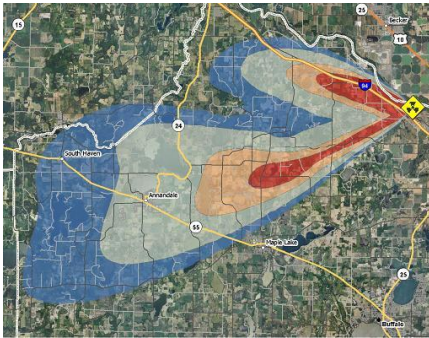


In a major emergency...
 Evacuees need shelter...
 EMTs need help...
 Hospitals are
 overwhelmed...

CONTACT INFORMATION:



We need to be *geospatially* prepared BEFORE these types of events happen!



Minnesota has approximately:

- 1,400 Schools
- 150 Hospitals
- 650 Police stations
- 800 Fire stations

No single authority can confidently tell us *where* they all are.

John Hoshal
 Supervisor – GIS Services, MnGeo
 Minnesota Geospatial Information Office
 658 Cedar St., Suite 300
 St. Paul, MN 55155-1603
 Tel: 651-201-2482
 Fax: 651-296-3698
 E-mail: john.hoshal@state.mn.us



Steve Swazee
 Co-Chair, MnGeo Emergency Preparedness Committee
 4524 Oak Pond Road
 Eagan, MN 55123
 Tel: (651) 456-5411
 Fax: (651) 456-5411
 Email: sdswazee@earthlink.net

Visit MnGeo EPC at:
<http://www.mngeo.state.mn.us/committee/emprep/index.html>

Version 1.4 (2/26/10) MD JH

Minnesota Structures Collaborative



An Initiative Supporting the National Map, National Spatial Data Infrastructure, Emergency Response and Homeland Security

The Minnesota Structures Collaborative was designed to develop the partnerships and technical capacity needed to support the long-term collection, publication and maintenance of databases pertaining to four types of structures in Minnesota:

- Schools
- Hospitals
- Police stations
- Fire stations

Funded by the Federal Geographic Data Committee, 2008

What is the Minnesota Structures Collaborative?

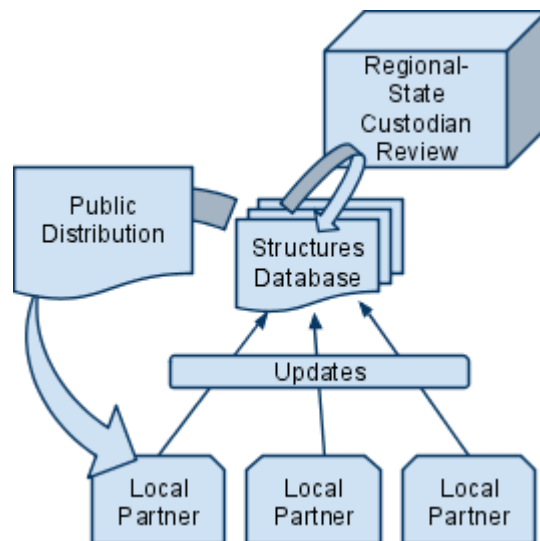
Funded by the Federal Geographic Data Committee Cooperative Agreements Program (CAP), the Minnesota Structures Collaborative was designed to increase situational awareness for emergency responders by enhancing our existing geographic databases of structures. Project outcomes include:

- Identifying existing public/private GIS data resources on structures.
- Identifying custodians of the most accurate and complete data sets for schools, hospitals, police and fire station locations.
- Proposing a stewardship program for each custodian of each structure type that will ensure its yearly update, long-term maintenance and availability; engaging local government in the process.
- Determining minimum attribution requirements for each data type¹.
- Ensuring data is documented with standard metadata.
- Assessing available data for resolution, accuracy, completeness and currency.
- Publishing data for public consumption through existing federal and state clearinghouses, portals and services.

1. Consideration will be given to attributes that may not be publicly available due to national security concerns.

How is this going to work?

The Structures Collaborative relied on the *Data Custodian Roles Model*, developed by MetroGIS, to facilitate a **statewide effort** engaging local partners in the maintenance of structures data.



Working with the non-profit entity SharedGeo, the Minnesota Structures Collaborative funded the development of an online maintenance tool that local partners can use to add, review and maintain locational and attribute data for structures in their community or region. Powered by open-source GeoMoose code, the online tool is easy to use and is essentially free for other states to implement.



How can I help?



GIS and Mapping Professionals: Participate in the MnGeo Emergency Preparedness Committee and get access to the maintenance tool at the link below.

Local Government Officials: Spread the word to your emergency responders and encourage them to contribute their knowledge.

Regional and State Government Officials: Consider serving as a data "custodian"; filling gaps in local information and reviewing data for public use.

Learn more about this effort and how you can participate by visiting:

<http://www.mngeo.state.mn.us/committee/emprep/structures/index.html>

Private Partners / General Public: You too can participate in this effort. Know your surroundings, including where critical facilities are in relation to your home and work. Use online mapping tools such as Google Maps and Open Street Map, and report inaccuracies when you see them.