



Minnesota Geospatial Advisory Council

May 20, 2026



MINNESOTA

GEOSPATIAL ADVISORY COUNCIL

Information Sharing

- This meeting is being transcribed (not recorded) by Microsoft Teams to assist with the creation of the meeting minutes.
- The content of the meeting chat and transcript are subject to the Minnesota Data Practices Act, and so a gentle reminder, please don't share any private information.

Starting transcription now

Agenda Item 1

Call to order

- Roll call
- Approve agenda
- Approve last meeting minutes
([March 11](#))

Mayer



Roll Call: FY2026-27 Members

- **City, Twin Cities Metro**
 - Dennis Tumberg, *City of Chanhassen*
- **City, Greater Minnesota**
 - Michael Krueger, *City of Moorhead*
- **County, Twin Cities Metro**
 - Michelle Clasen, *Washington County*
- **County, Greater Minnesota**
 - Ryan Stovern, *St. Louis County*
- **Regional Government, Twin Cities Metro**
 - Mary Mortensen, *Met Council*
- **Regional Government, Greater Minnesota**
 - Karissa Beierle Pavek, *Fargo-Moorhead Metropolitan Council of Governments*
- **State Government**
 - Amy Harrigan, *MnDOT*
 - Kari Geurts, *MINIT DNR*
- **Federal Government**
 - Mitch Bergeson, *US Geological Survey*
- **Tribal Government**
 - Ryan Bonney, *Shakopee Mdewakanton Sioux Community*
- **Nonprofit Organization**
 - Jessica Fendos, *LOGIS*
- **Business**
 - Gerry Sjerven, *Minnesota Power*
 - Kendis Scharenbroich, *Pro-West & Associates*
- **K-12 Education**
 - Shana Crosson, *Education Consultant/Mapping Together*
- **Higher Education**
 - Rama Mohapatra, *Minnesota State University, Mankato*
 - Stacey Stark, *U-Spatial / UMN Duluth*
- **Surveyor**
 - Pat Veraguth, *Douglas County*
- **MetroGIS**
 - David Brandt, *MetroGIS | Washington County*
- **MN GIS/LIS Consortium**
 - Carla Coates, *Minnesota GIS/LIS Consortium | MN DPS*
- **At-Large**
 - Britta Maddox, *Anoka County*
 - Heather Albrecht, *Hennepin County*
 - Matt Goodman, *St. Louis County Sheriff's Office*
 - Quentin Ikuta, *National Indian Carbon Coalition*
 - Rick Schute, *City of St. Paul*
 - Tanya Mayer, *Metropolitan Council*
- **Chief Geospatial Information Officer (ex-officio)**
 - Alison Slaats, *MNIT MnGeo*

Minnesota Geospatial Advisory
Council Meeting Poll



MnGeo Staff Support



Megan Sisko

MNIT MnGeo



Sally Wakefield

MNIT MnGeo

Non-Member Guests

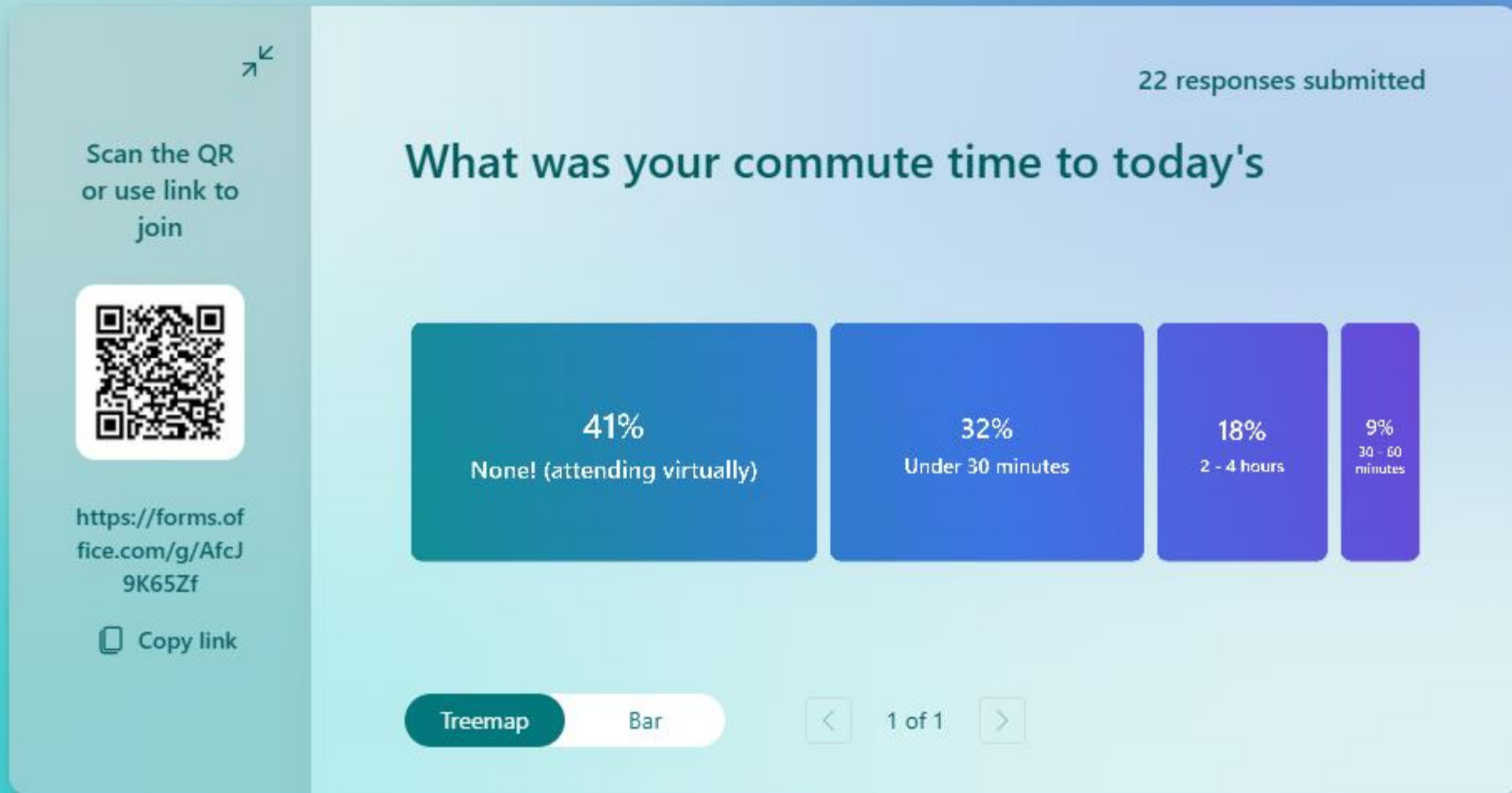
First and last name

Name of your organization

In-Room Attendees: Please announce verbally

Virtual Attendees: Place in the chat

Live Polling



Agenda

Time	Topic	Time	Topic
10:30	Call to order	11:55	Committee presentations
10:40	Review and receive Committee Reports	12:15	Sector Reports
10:45	Approve modified Committee Work Plans	12:55	MnGeo updates
10:50	PLSS Point Data Standard proposal	1:05	Executive Team updates
11:00	PLSS Monument Grant Program update	1:15	Round Robin / Announcements
11:15	Imagery Committee proposal	1:30	Adjourn
11:25	<i>Break and networking</i>		

Approve agenda*

Last Meeting Minutes Approval

Approve last meeting minutes*

(March 11, 2026)

Review and receive Committee Reports

Mayer



GAC Committee Report Highlights

Emergency Preparedness Committee

- US National Grid (USNG) is looking for a champion to learn from Randy Knippel.

K-12 Education Committee

- Planning has started for Geofest, a teacher conference in October.

Standards Committee

- Priority Project Update - For the Bikeway Data Standard Expansion for Trails, we have reached out to some interested parties to let them know the process. We have reached out to Subject Matter Experts on this to see who is interested in helping us out in this process.

Recognition of Barriers

- Funding and/or volunteer time continue to be an ongoing challenge reported by at least ½ our Committees

GAC Committee Reports Acknowledgement

**Acknowledge receipt of
committee reports**

Approve modified Committee Work Plans*

Mayer



GAC Committee Work Plan Updates

6 Committees were assigned new Priorities this term

- 3D Geomatics
- Emergency Preparedness
- K-12 Education
- Outreach
- Parcel and Land records
- Standards

Committee	Priority Project Name	Priority Owner
3D Geomatics	Lidar Data	Gerry Sjerven
3D Geomatics	Lidar-derived Hydrography	Sean Vaughn, Jamie Schulz
3D Geomatics	Hydro-modified DEMs	Sean Vaughn
3D Geomatics	Culvert Data Standard	Rick Moore
Archiving	Geodata Archive Implementation	Ryan Mattke
CANDO	Publication of Open Foundational Datasets	David Brandt
Emergency Preparedness	Critical Infrastructure Data Workflow	Stacey Stark
Emergency Preparedness	US National Grid Map Availability	Britta Maddox
Emergency Preparedness	Options for a Fire Risk Assessment Tool	Britta Maddox
K-12 Education	K-12 Curated Geospatial Datasets	Shana Crosson
K-12 Education	K-12 Minnesota Digital Atlas	Shana Crosson
K-12 Education	Statewide Educator Dataset	Shana Crosson
Outreach	Statewide Parcel Data	Stacey Stark, Norman Anderson
Outreach	Statewide Road Centerline Data	Stacey Stark, Norman Anderson
Outreach	Statewide Address Points Data	Stacey Stark, Norman Anderson
Outreach	More Fully Attributed Statewide Parcel Data	Stacey Stark
Outreach	Success Stories for Geospatial Technology	Jessica Fendos
Outreach (with help from MnGeo)	GIS Advocacy Resources	Jessica Fendos
Parcel and Land Records	Updated & Aligned Boundary Data	Preston Dowell
Parcel and Land Records	Statewide County Boundary Dataset	Kory Thurnau
Parcel and Land Records	Statewide Right-of-Way Data	
Parcel and Land Records	Cadastral Mapping Guidelines	
PLSS Preservation	Remonumentation of all original federal Section Corners	Pat Veraguth
PLSS Preservation	Statewide Survey Records Inventory	Pat Veraguth
Standards	Public Land Survey System Data Standard	Curt Carlson, Mark Kotz
Standards	Transportation Asset Standard	Amy Harrigan
Standards	Bikeways Data Standard Expansion for Trails	

GAC Committee Work Plan Updates

Work Plan Updates approved in March 2026

- Emergency Preparedness
- K-12 Education
- Standards

Work Plan Updates in Process

- Parcel and Land Records – committee is meeting in June

Work Plan Updates for Review Today

- 3D Geomatics – updated workplan submitted
- Outreach – updated workplan submitted

GAC Committee Work Plan Updates

Request a motion to approve
the 2 updated Committee Work Plans
as reflected in the meeting agenda packet

PLSS Point Data Standard proposal*

Kotz / Carlson





PLSS Point Data Standard Approval Request

Mark Kotz | Standards Committee

Why This Standard?

- The Public Land Survey System (PLSS) established corners which form the framework for many geospatial datasets and is the basis for property ownership in MN.
- Provide for a single, commonly accepted set of attribute specifications for transferring and aggregating PLSS point data in Minnesota.
- Increase ease of data sharing across jurisdictions.

History of the Standard

- Proposed by two GAC committees.
 - Parcels and Land Records Committee - Preston Dowell, St. Louis Co.
 - PLSS Preservation Committee - Kory Thurnau, MnGeo
- Work with Standards Committee chairs to align proposal with GAC standards.
- Committee approved draft for public review September.
- 90-day public review ended Feb. 27.

History of the Standard continued...

- SMEs and chairs review comments propose responses and changes to standard.
- Meeting with commenters to discuss responses & changes to standard resulting in some additional changes.
- Recommended changes to standard approval by Standards Committee May 4.
- Today: request approval by the GAC.

“Mandatory” Confusion

Challenge/Opportunity to Increase Clarity about GAC Standards

- GAC voluntary standards with “Mandatory” data elements to define compliance level.
- MN Department of Public Safety (DPS), Emergency Communication Network (ECN) requirements to participate in state NG911 data aggregation.
- Different organizations + same state point person = confusing.
- Communication campaign for GAC standards.
 - Increasing clarity within standards documents.
 - Adding clarifying language in multiple places on web site.
 - Communication pieces to go out with promotion of PLSS standard.
- Not unique to PLSS Point Data Standard.

“Mandatory” Confusion

From the standard:

Compliance Notes

- **Organizations in Minnesota are encouraged to adopt and comply with this standard for purposes of data exchange.** A PLSS points dataset that fully complies with this standard will consist of geospatial points with all attribute fields specified in this standard. It will also comply with the inclusion and domain specifications of this standard. **Some data producing organizations that choose to comply with this standard do not collect all data included in the standard. Such organizations may choose to work toward full compliance over time. It is understood that each data producing organization will make compliance decisions based on their own business needs.**

Request for Approval

The Standards Committee requests that the GAC approve draft version 1.0 of the PLSS Point Data Standard.

Questions?

Thank You!

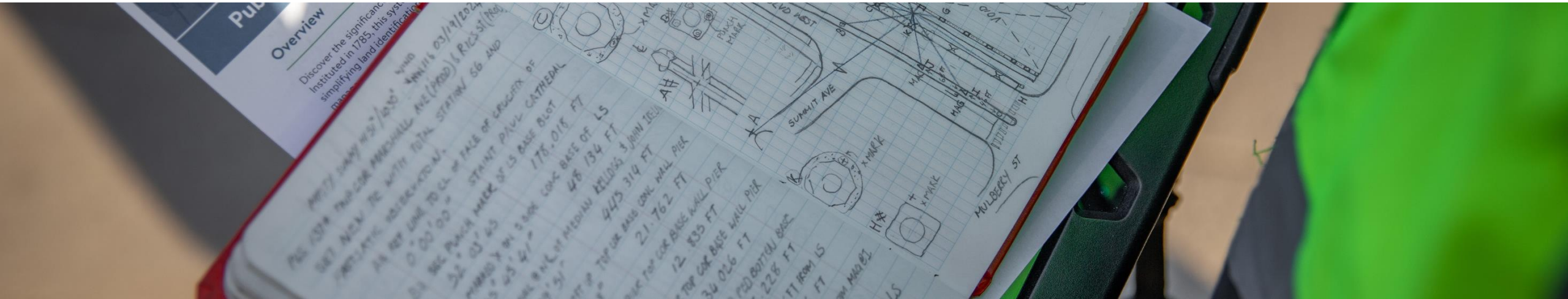
Mark Kotz

markjkotz@gmail.com

PLSS Monument Grant Program update

Thurnau / Veraguth





PLSS Monument Grant Program

Kory Thurnau | PLSS Preservation Committee

Minn. Stat. 381.125

- The Chief Geospatial Information Office (GIO) shall work with licensed land surveyors to develop the grant program
- **Grants may be used to:**
 - To update survey records and data regarding monuments
 - To restore, maintain, and or update PLSS corners
- **Selection criteria**
 - The GIO must establish criteria for prioritizing applicants
 - Selection criteria must favor counties that demonstrate financial need



- One-time appropriation included \$9.7 million
- \$600k for administration
- \$9.1 million available for grants

Corner Restoration Projects



Form: 283 (01/2014) 2023

CERTIFICATE OF LOCATION OF GOVERNMENT CORNER

SOUTH QUARTER (M.C. 61) of Section 30
Township 61 North, Range 13 West, 4th P.M.

STATE OF MINNESOTA, COUNTY OF SAINT LOUIS

Recorded on: 06/10/2023
at 8:23 AM
Document No. 1475706

Wendy Levitt
County Recorder

I hereby certify that the within instrument was filed in this office for record

by [Signature] Deputy

GPS I.D.: _____ Project No.: 5556 Area 10

SEC. 30
T61N R13W

SEC. 30
T61N R13W

ISAAC LAKE

SAUNA

DOCK

G.L. 10

G.L. 40 Chams

G.L. 1

SW 30 3/4" Caped Pipe
S1/4 30 M.C. 61 (Not Set)

5.69°17'23"W. 2366.78
10.01
5.69°17'23"W. 2630.24
N.09°17'23"E. 2630.24
N.09°17'23"E. 46.40
W.C.
S.28°W 14.58
3.00
New Reference SE corner of Sauna Building
SW 29 1/2" D.I. 1 1/2" W. CAP 58.13"

New BT 17" J. Pine Existing nail, set new tag
New BT 7" Spruce New nail + tag

SEC. 31 T61N R13W

SEC. 31 T61N R13W

"SKETCH OF REFERENCE TIES"
(not to scale - bearings are magnetic)
Ties are measured to center of monument unless otherwise noted.

UNITS = Metric English

NAD 83 (1996 Adjustment)
Latitude (N): N47°43'49.0970"
Longitude (W): W92°02'30.5530"
SCLTM 86 Northing: 3607367.609
Easting: 4657121.300

I hereby certify that this survey, plan, or report was prepared by me or under my direct supervision and that I am a duly Licensed Land Surveyor under the laws of the State of Minnesota. I further certify that this Certificate of Location of Government Corner is correct and complete to the best of my knowledge and belief.

BOLTON & MENK
[Signature] 10/6/23
Kary K. Thorne License No. 52137

County Surveyor Deputy County Surveyor Professional Land Surveyor

drawn by: JFD

Page 1 of 2

277039 Page 3 of 3

Statement of Evidence

East Quarter Corner, Section 34, Township 124 North, Range 36 West, Pope County, Minnesota

- 1857 GLO - Set 1/4 section post, dug pits and trench, and built mound.
 - 1915 Pope County Survey - Beginning at the S.E. Cor. and running N. 2640 feet, a gun barrel was found in the center of the road. Agreed to by property owners as E1/4 Corner. (sketch shows a double barrel)
2640 feet to the southeast corner Section 34
1320 feet to the center east sixteenth corner Section 34
 - 1939 MNDNR - MNDNR aerial photo shows lines of occupation at this corner running to the east and west of road
 - 2016 FWS - Found two 1"x30" outside diameter iron pipes together and in-line north and south, and flush with gravel road surface. Accepted as gun barrel called for in 1915 county survey. Monument is in poor condition.
Set 5/8 inch x 20 inch rebar with FWS marked aluminum cap 6 inches below gravel road surface, over 12 inch remnant of gun barrels. Buried broken pieces of found gun barrels along side.
2630.75 feet to the southeast corner Section 34
1313.40 feet to the center east sixteenth corner Section 34
- Accessories Set
RM1 7/8" x 15" iron pipe, flush, bears S.45°00'15"W., 48.12 feet
RM2 7/8" x 15" iron pipe, flush, bears N.45°02'06"W., 46.40 feet

Survey on file in the Office of the Regional Director (612-713-5410), Region 3, U.S. Fish & Wildlife Service, designated 94b 134,a 140 Tracts.

Record Related Projects



LAND SURVEY RECORDS

Founded in 1862, Pope County is made up of 20 townships, with 36 Township Public Land Survey System (PLSS) corners and an estimated 2,500 PLSS corners. Through the PLSS Monument Grant Program (2024-2026), Pope County created the PLSS Corner Viewer, a survey records library, and established a PLSS Remonumentation plan.



PLSS CORNER VIEWER

PLSS CORNER VIEWER

The PLSS Corner Viewer is a web-map based tool for viewing PLSS corners, corner certificates of record and any associated land records, highlighting where geodetic coordinates are available and providing links to related documents.



SURVEY RECORDS LIBRARY

SURVEY RECORDS LIBRARY

The Survey Records Library includes all land survey records which have been recorded or maintained by the Pope County Recorder. These records include plats, PLSS Corner Certificates, PLSS Corner Tie survey notes, certificates of surveys, as well as land surveys of platted and un-platted lands.



PLSS REMONUMENTATION

PLSS REMONUMENTATION

The PLSS Remonumentation Plan is a program to preserve and re-establish the corner monuments of the PLSS in Pope County. The PLSS forms the legal foundation for land ownership, and PLSS monuments are essential for property descriptions and boundary determinations. PLSS monuments are also the basis for accurate GIS data.

PLSS Grant Success

- 21 of 34 Grants have been completed
 - \$7.8 million has been paid/ reimbursed
- 13 Grants have been extended
 - Realized cost savings & efficiencies
 - No additional funds currently (allows time to complete)
 - \$1.3 million committed/ remaining to be reimbursed



Thank You!

Kory Thurnau

Kory.thurnau@state.mn.us

Imagery Committee Proposal*

Mayer / Albrecht



New GAC Committee Proposal: Imagery Committee

Proposal is to create a new permanent GAC Committee to guide the development and stewardship of a coordinated statewide imagery program for Minnesota.

Advise the Geospatial Advisory Council (GAC), the Minnesota Geospatial Information Officer (GIO), and the Minnesota Geospatial Information Office (MnGeo) on strategies, standards, partnerships, and governance needed to support a sustainable statewide imagery program.

Co-chairs: Tanya Mayer and Heather Albrecht

Members: Jeff Bloomquist, Ryan Bonney, Christy Christensen, Jennifer Murphy, Joe Sapletal, Kory Thurnau

Priority: Statewide Imagery Program - A long-term effort dedicated to optimizing the acquisition, inspection, documentation, distribution, and archiving of statewide imagery.

Priority Executive Sponsor: Alison Slaats **Priority Owners:** Christy Christensen, Jennifer Murphy

Imagery Committee Objectives

Support the GAC, GIO, and MnGeo by developing recommendations related to the creation and stewardship of a statewide imagery program. Activities may include:

- Assess current aerial imagery acquisition practices across Minnesota state agencies, counties, regional planning organizations, and other partners.
- Identify statewide business needs and use cases for aerial imagery and derived products.
- Assist MnGeo in developing a Request for Proposals (RFP) for a statewide imagery needs assessment.
- Review and provide input on results of the statewide imagery needs assessment.
- Evaluate opportunities for coordinated statewide or regional imagery acquisition programs.
- Recommend standards and specifications for imagery acquisition, processing, and distribution.
- Consider infrastructure needs related to imagery hosting, services, and data access.
- Identify and evaluate potential governance and funding models for a sustainable statewide imagery program.
- Consider existing imagery coordination efforts such as regional collaborative programs and state agency initiatives.
- Evaluate opportunities to coordinate imagery with other statewide geospatial datasets where appropriate.

Committee Deliverables

Based on the findings of the needs assessment, develop recommendations that may include:

- A Statewide Imagery Strategy
- Recommended imagery acquisition cycles and specifications
- Recommended governance and coordination structure
- Potential funding and cost-sharing models
- Guidance on imagery hosting, access, and distribution

The Committee will update the GAC quarterly and submit formal recommendations as it achieves its objectives and completes key deliverables.

Term Workplan Summary

- Develop Statewide Imagery Needs Assessment RFP
 - Assist MnGeo in preparing a Request for Proposals (RFP) to conduct a statewide imagery needs assessment.
- Support Needs Assessment Process
 - Review findings, evaluate statewide imagery priorities and business needs, and identify opportunities for coordinated acquisition and shared infrastructure.
- Develop Statewide Imagery Program Recommendations
 - Using the results of the needs assessment, develop recommendations for a coordinated statewide imagery program.
- Imagery Stewardship
 - Review and add the Image Service Sustainability Committee work in to the Imagery Committee work plan.

Motion to create new GAC Imagery Committee

- **Motion:** To create a new GAC Imagery Committee and accept the proposed Committee charter and workplan

Break and networking



Committee Presentation 1: Outreach

Fendos





Outreach Committee Update

Jessica Fendos | Outreach Committee Chair

Responsible Priority Projects and Initiatives

- Statewide Parcel Data
- Statewide Road Centerline Data
- Statewide Address Points Data
- More Fully attributed Statewide Parcel data
- Success Stories for Geospatial Technology
- GIS Advocacy Resources (New!)

Create Elevated Identities for GAC and Its Committees

Objectives:

- Promote the work of the GAC and its committees through public engagement, web presence, and recognitions.
- Connect with local government representatives to support the GAC's commitment to free and open geospatial data for Minnesota.
- Tell geospatial stories in venues where they can inform policy makers, partners, and the general public.
- Develop and provide guidance for Esri Hub sites for the GAC and its committees.
- Coordinate with Minnesota Geospatial Information Office to establish communication guidelines for the GAC that are in alignment with Minnesota IT Services policies and expectations.

A re-energized Outreach Committee was formed

Jan. 2025

Refined mission statement

Mar. 2025

United a GAC Hub build team

April, 2025

MnGeo feedback loops for GAC Hubs and build team revisions

Oct. 2025 - Mar. 2026

GAC Executive Team suggestions & MnIT feedback/input

Apr. 2026

GAC Committee review

May 20th, 2026

First Round of Deliverables

Minnesota Geospatial Advisory Council

Minnesota Geospatial Advisory Council

The Geospatial Advisory Council acts as a coordinating body for the Minnesota geospatial community. It represents a cross-section of organizations that include counties, cities, universities, business, nonprofit organizations, federal and state agencies, tribal government, surveyors and other stakeholder groups that benefit from geospatial technology.



Current Members

Appointed members of the Minnesota Geospatial Advisory Council



Priorities

Priority projects for the current term



Activities

Recent achievements and current work plans

Outreach Committee

Mission: To connect the community with the council and its committees by providing strategic communication resources that advance council priorities and values.

Objectives

To support its mission, the Outreach Committee will:

- Promote the work of the GAC and its committees through public engagement, web presence, and recognitions.
- Connect with local government representatives to support the GAC's commitment to free and open geospatial data for Minnesota.
- Tell geospatial stories in venues where they can inform policy makers, partners, and the general public.
- Develop and provide guidance for Esri Hub sites for the GAC and its committees.
- Coordinate with Minnesota Geospatial Information Office to establish communication guidelines for the GAC that are in




Data Endorsement Committee

Mission: To create and implement a Geospatial Advisory Council endorsement process for statewide geospatial datasets.

Objectives

To support its mission, the Data Endorsement Committee will:

- Identify key components of a data endorsement process through committee meetings and review of previous materials to include:
 - Materials related to Minnesota Spatial Data Infrastructure (MSDI) from organizations to include Minnesota Governor's Council on GIS (MGCG), GAC materials, Land Management Information Center (LMIC) and MnGeo.
 - Examples of endorsement processes in place from other states, such as Montana.
 - Data endorsement process draft created by GAC Emergency Preparedness Committee's Critical Infrastructure Workgroup.
- Ensure key components of a data endorsement process include definitions of and recognition of data creators, data users, and other partners.
- Define key steps of a data endorsement.
- Ensure the data endorsement process is sustainable, accounting for new data topics and sources as well as monitoring endorsed datasets for success.



[Minnesota Geospatial Advisory Council](https://www.mngeo.gov/geospatial)

The Sum of Its Parts

Contributors:

- Outreach Committee build team: Nick Linell, Jeff Kalar, Alec Trenda, Jessica Fendos + support from other team members
- MnGeo Orchestrators: Megan Sisko and Sally Wakefield
- GAC Executive Team provided user experience feedback/suggestions
- MnIT Communications provided graphics and accessibility guidelines



Megan Sisko will propose a Hub maintenance and future alignment plan during retreat

Align for round 2 of Hub Sites construction

Archiving Committee: *Nick Linell*

EPC Committee *Stacey Stark*

PLSS Preservation Committee: *Jeff Kala*

3D Geo Committee *Alec Trenda + Cara Leitheiser+ Jessica Fendos*

K-12 Education Committee: *Shana Crosson*

Awards Committee:

Parcels and Land Records Committee :

Standards Committee:

Finalize GAC and Committee Hubs build support and maintenance document

Open Data Subcommittee Activities

- Outreach to counties regarding opt-in participation to parcel and NG911 datasets
- Listen to concerns from counties hesitant to become open data participants and develop
- Develop strategies and relevant case studies to supporting opting-in
- Explore alternative methods to assist counties in extracting additional parcel attributes.

Open Data - Recent Development

- Explore how the Department of Revenue's PRISM data can enhance existing parcel datasets.
- (with Outreach) Update the Parcels promotional story map for accessibility and with new stories
- (with Outreach) Working with the Outreach committee to develop an Open Data glossary
- (with Outreach) Discussing what the value of an ROI related to open data would bring to these efforts

Thank You!

Jessica Fendos

jfendos@logismn.gov

(763) 543-2638

Committee Presentation 2: Standards

Kotz / Carlson



Standards Committee

Mark Kotz | Co-Chair Standards Committee

What are standards?

“Standards are documented, agreed-upon rules, requirements, or guidelines that establish uniform criteria for products, processes, and services to ensure quality, safety, and compatibility. They facilitate consistency across industries and act as benchmarks.”

--IEEE Standards Association



We administer and support a process that allows the MN geospatial community to create geospatial standards.

- Partner with subject matter experts (SMEs) to create/modify standards.
- Maintain supporting materials like domains and lookup tables.
- Work happens as needed, no regular meeting schedule.



Why Have GAC Standards

Why is this Important?

- Makes data sharing more efficient and effective.
- Makes data aggregation easier and higher quality.
- Community involvement and buy-in is critical – standards are voluntary.
- In a geeky way, standards help bring us together as a community.
- GAC standards have received praise from our community, other states, national orgs (NENA, NSGIC, NAD).



What's Cooking with Standards?

- Three GAC priorities
 1. PLSS Point Data Standard
 2. Transportation Asset Data Standard
 3. Trails Data Standard
- Communication campaign – increase understanding and clarity
- Ongoing updates/maintenance
 - Lake and Wetland Basin ID Standard
 - Proposed new attributes for addresses and roads standards
 - Domain updates as needed



Thank You!

Mark Kotz

markjkotz@gmail.com

Sector Report 1: County - Twin Cities metro

Albrecht



County Government - Twin Cities Metro

Heather Albrecht | GAC At-large member

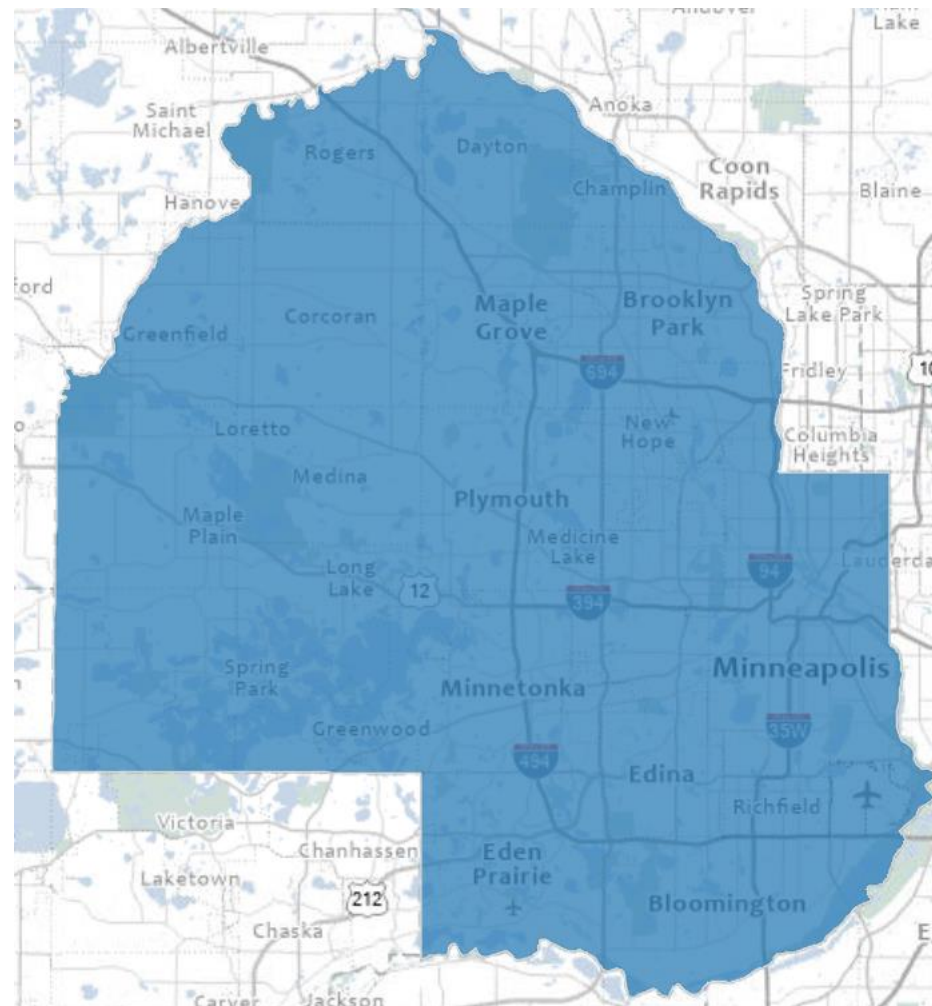
Metro GIS collaboration

- MetroGIS: Regional (7-county metro) GIS initiative that serves to promote and facilitate sharing of geospatial data.
 - Similar sector makeup to GAC
- 8 County Collaborative: Monthly meeting of metro county, plus Olmstead, GIS managers
- Bi-monthly MESB/DPS NG911, MNGeo and MetroGIS join the 8 County Collaborative call



Hennepin GIS collaboration

- HCGUG: Hennepin County GIS Users Group promotes sharing of GIS information and resources between GIS users within the Hennepin County geographic area
 - Orthogonal and oblique imagery
 - Street-level imagery
 - Property map



Minnesota GIS collaboration

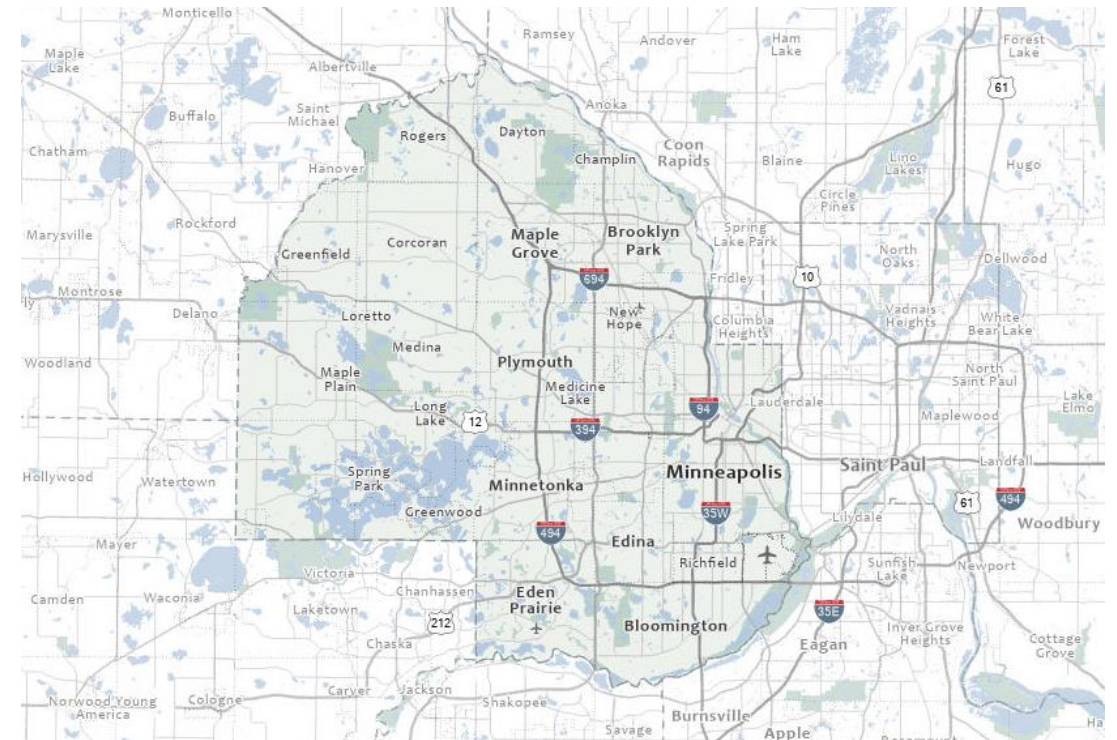
- Support the GAC representative to **Count Government - Twin Cities Metro**, Washington County Commissioner Michelle Clasen
- MCGISA Teatime: Weekly opportunity to participate in Teams call with GIS professionals from every county in Minnesota to discuss current events and projects
- MN GIS/LIS Consortium events



I have considered joining the GAC, but...

GAC committee participation

- Open Data Subcommittee of the Outreach Committee, Chair 2022- 2025
- Mission: The Open Data subcommittee's mission is to promote sharing of county parcels, address points, road centerlines, and emergency service zones data openly and shared to the state for cohesive statewide data.



- Council Chair and executive team member, July 2023 – 2025
 - Facilitate quarterly member meetings
 - Develop and promote executive team goals
 - Preparation of Minnesota Geospatial Advisory Council Term Report & Work Plan
- Leadership team member: July 2023 – current
 - Participate in the planning of GAC quarterly meetings and other events
 - Evaluate executive team recommendations
 - Recruit for and promote GAC priority project advancement

GAC committee participation

- Imagery Committee, Co-chair – current
- Mission: The Imagery Committee exists to recommend and guide the development and stewardship of a coordinated statewide imagery program for Minnesota.



Imagery ▾

Off ▾

- 2025
- 2024
- 2023
- 2022
- 2021
- 2020
- 2018
- 2015
- 2012
- 2009
- 2006
- 2004
- 2002
- 2000
- 1994
- 1994_CIR
- 1989
- 1988
- 1969
- 1964

Seize the opportunity

- My early GAC participation included assisting with data standard development, such as address points.
 - I don't think I knew I was "on a GAC Committee."
 - I was invited and interesting conversations were happening.
- I applied more than once before being appointed to the GAC.
- GAC committees are open to everyone!



Active Committees and Related Subgroups

- [3D Geomatics](#)
 - Data Acquisition Workgroup
 - Education Workgroup
 - Hydrogeomorphology Workgroup
 - Vegetation Workgroup
- [Archiving](#)
- [Awards](#)
- [Emergency Preparedness](#)
 - Critical Infrastructure Assessment Workgroup
 - Education Workgroup
 - United States National Grid Workgroup
- [K-12 Education](#)
- [Outreach](#)
 - Open Data Subcommittee
- [Parcels and Land Records](#) (formerly Digital Cadastral Data)
 - Boundary Alignment Subcommittee
 - PLSS Remonumentation Legislation Subcommittee
- [PLSS Preservation](#)
- [Standards](#)

Active Ad-Hoc Committees

- [Data Endorsement](#)

Thank You!

Heather Albrecht

Heather.albrecht@hennepin.us

Sector Report 2: City - Twin Cities metro

Tumberg

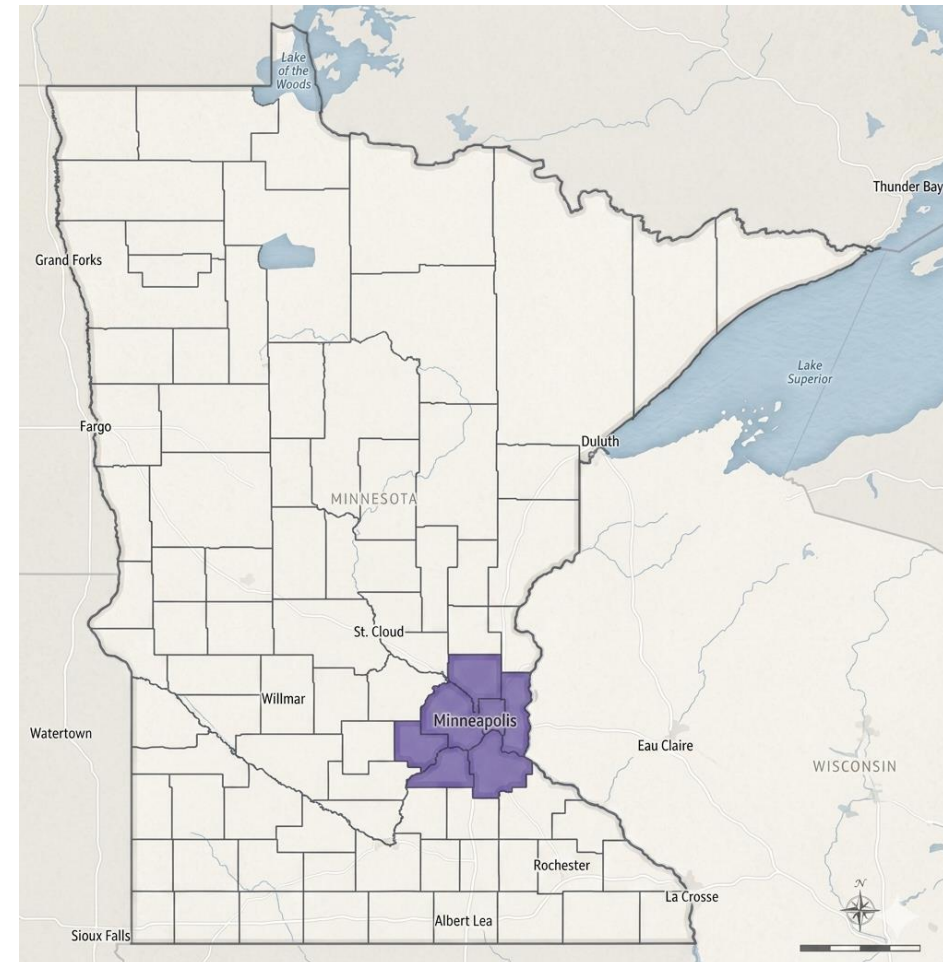




Sector Report 1: City – Twin Cities Metro

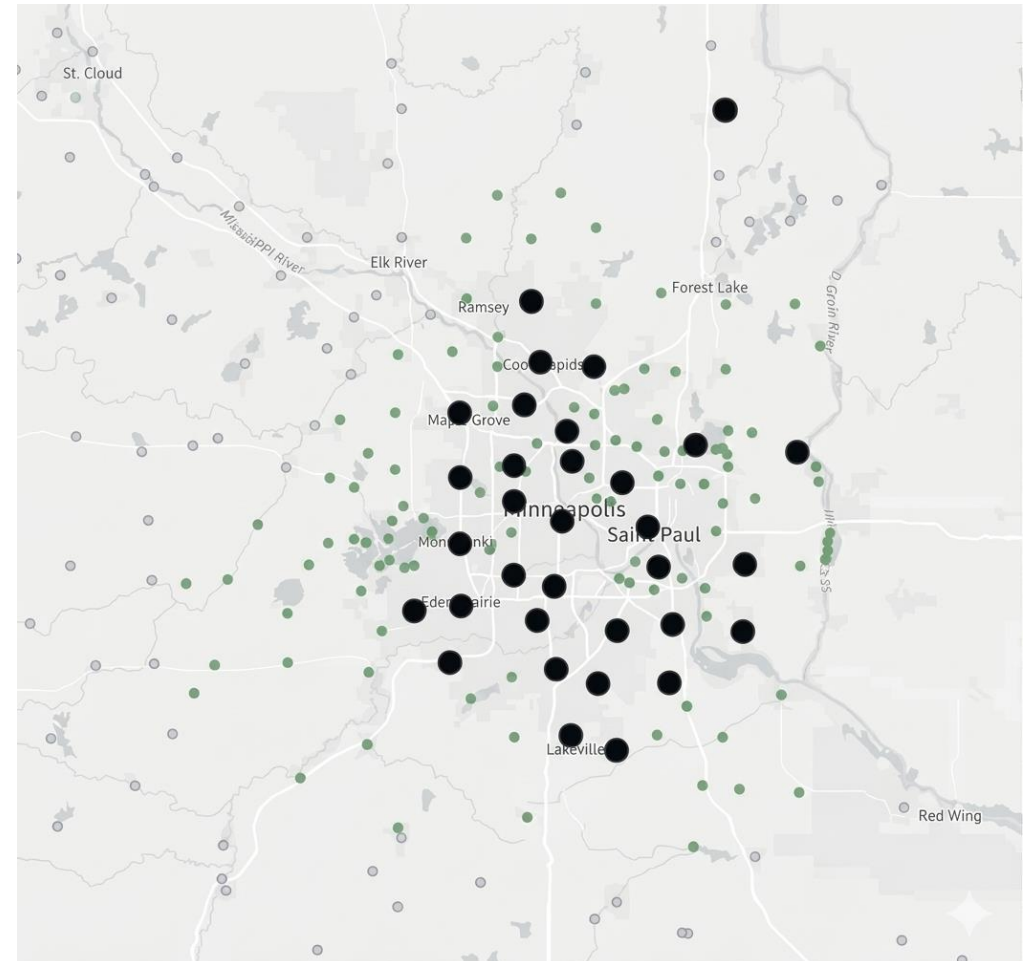
Dennis Tumberg | City, Twin Cities Metro

- **Twin Cities Metro Cities GIS**
 - **Roles and duties vary by:**
 - **City**
 - **Number of GIS Staff**
- **Growing demand as GIS and Asset Management is utilized more**



Twin Cities GIS User Group

- **Started June 2023 by John Nerge (Brooklyn Park)**
- **Quarterly Meetings**
- **Membership**
 - **82 members**
 - **43 Government Agencies represented**



TCGUG Recent Projects/Presentations

- GIS Data Governance
- GIS Map and App Accessibility
- Working with Waze, Google Maps, Apple Maps, etc.
- GIS Data Requests
- Park Finder Upgrades



GAC Priority Projects

- Priority Project Ideas Survey – 0 submissions
- Project Prioritization Survey – 5 votes

Sector	Responses	Percentage
State Government	80	48%
Business	22	13%
County Government - Greater MN	19	11%
County Government - Twin Cities Metro	13	8%
Regional Government - Twin Cities Metro	9	5%
Nonprofit	8	5%
City Government - Twin Cities Metro	5	3%
Higher Education	5	3%
Federal Government	3	2%
Other	2	1%
Surveyor - Government	1	1%
City Government - Greater MN	0	0%
K-12 Education	0	0%
Regional Government - Greater MN	0	0%
Tribal Government	0	0%
Grand Total	167	100%

Project Long Name	Weighted Value Score	Non-Weighted Value Score	City Government - Twin Cities Metro
Critical Infrastructure Data Workflow	1.21	1.01	2.40
Statewide Right-of-Way Data	1.48	1.28	2.20
Statewide Utility Service Area Data	1.42	1.09	2.20
Transportation Asset Standard	1.09	0.98	2.20
Statewide Imagery	2.17	2.16	2.00
Statewide Imagery Program	1.85	1.92	2.00
Updated & Aligned Boundary Data	1.39	1.53	2.00
Statewide Address Points Data	1.56	1.53	2.00
Publication of Open Foundational Datasets	1.52	1.46	2.00
GIS Advocacy Resources	1.23	1.18	2.00
Lidar Data	2.06	1.99	1.80
Statewide Road Centerline Data	1.81	1.82	1.80
More Fully Attributed Statewide Parcel Data	1.57	1.62	1.80
Public Land Survey System Data Standard	1.66	1.56	1.80
Statewide Survey Records Inventory	1.48	1.16	1.80
Cadastral Mapping Guidelines	1.04	0.98	1.80
Statewide Parcel Data	1.81	1.93	1.60
Statewide County Boundary Dataset	1.62	1.74	1.60
Bikeways Data Standard Expansion for Trails	1.04	0.96	1.60
Fire Risk Assessment Tool	0.94	0.83	1.60
Statewide Educator Dataset	0.97	0.83	1.60
Lidar-derived Hydrography	1.68	1.70	1.40
Remonumentation of all original federal Section Corners	1.44	1.18	1.40
Success Stories for Geospatial Technology	1.05	0.93	1.40
K-12 Minnesota Digital Atlas	0.85	0.80	1.40
K-12 GIS Resources Group	0.82	0.78	1.40
K-12 Curated Geospatial Datasets	0.80	0.81	1.20
US National Grid Map Availability	0.77	0.76	1.20
Cadastralist Professionalization	0.65	0.68	1.20
Culvert Data Standard	1.39	1.34	1.00
Hydro-modified DEMs	1.48	1.49	0.80
Geodata Archive Implementation	1.12	1.07	0.60

Future Projects/Presentation Ideas

- **GAC**
 - GAC Survey (may expand to include other organizations)
 - “What is the GAC and how to make it relevant to Cities?”
- Education of different relevant GIS Organizations (GAC, MetroGIS, Minnesota GIS/LIS, etc.)



Thank You!

Dennis Tumberg

dtumberg@chanhassenmn.gov

952.227.1172

Sector Report 3: At-Large - Public Safety and Emergency Management

Goodman / Maddox / Schute





Sector Presentation: At-Large Public Safety and Emergency Management

Britta Maddox | Matt Goodman | Rick Schute



Ramsey County Fire Pre-Planning

Rick Schute | Critical Infrastructure

Operationalizing GIS for Pre-Incident Intelligence and Single-Pane Situational Awareness.

- **Tactical Interoperability & CAD Integration.** – Implementing the Esri Fire Pre-Planning Solution to deliver NFPA 1620-compliant tactical data, ensuring regional consistency for Auto-Aid and Closest Unit Dispatch (CUD) workflows. The goal: a "single pane of glass" via CAD integration for seamless situational awareness.
- **Executive-Led Governance & Scalable Logic.** – Driven by the Fire Chiefs Association to solve proprietary funding gaps. This model leverages the ArcGIS Solutions Gallery to move from static 3-ring binders to shared, real-time operational intelligence.
- **Key Message.** – Identify business owners with a functional gap, secure executive mandates to direct implementation, and iterate to move from static data to a unified operational dashboard.



Transition to NERIS

Britta Maddox | PSDS Fire RMS Administrator

National Emergency Response Information System

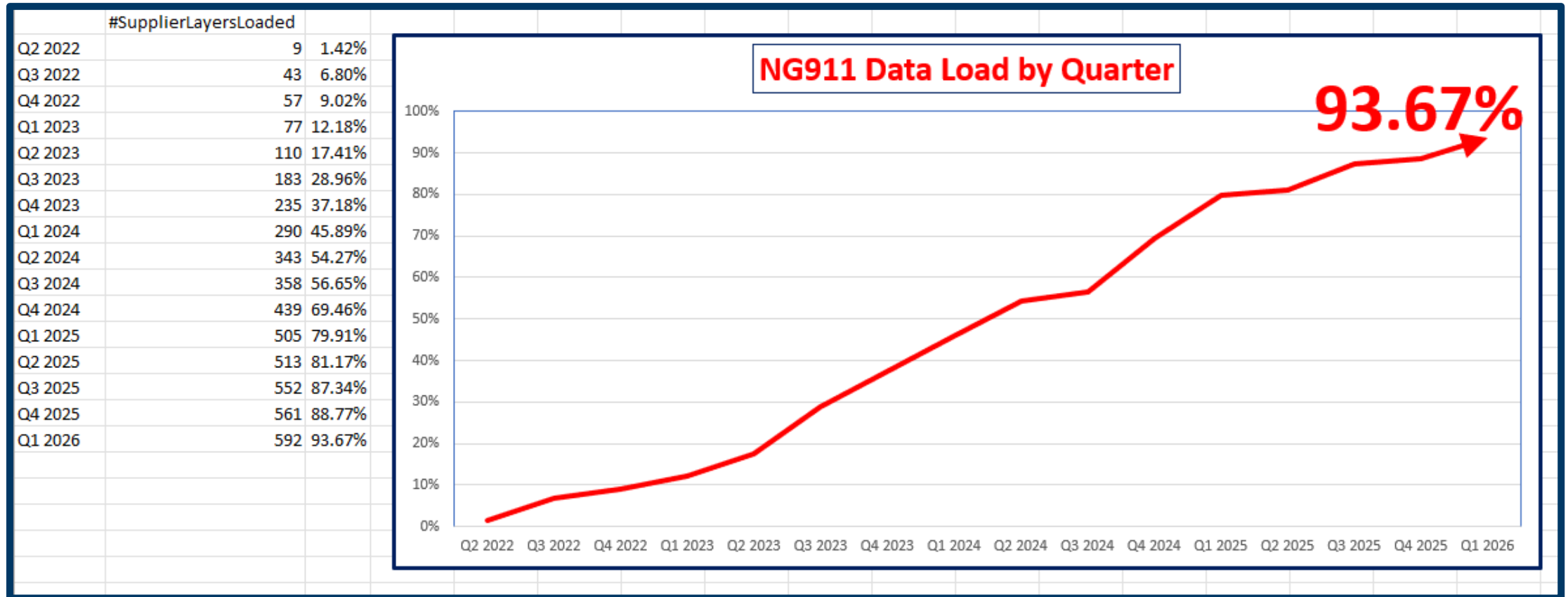
- Major transition in the Fire service from a 40+ year old antiquated incident classification system to an updated, dynamic all-hazards reporting system with capacity for current and future trends, emerging hazards, and de-duplication of data
- <https://neris.fsri.org/> to learn more
- Initial framework for advanced geoanalysis of data and accessibility to that information to all departments nationwide
 - Example - <https://neris.fsri.org/departments/FD27003300/analytics> (this link will not work for others as you have to be a logged in user to access analytics)



NG911 Updates

Britta Maddox | from Curt Carlson, MNIT/MnGeo, curtis.carlson@state.mn.us, 651-201-2491

NG9-1-1 Data Aggregation Development by Quarter



NG9-1-1 Data Recency Compliance

The SECB (Statewide Emergency Communications Board) NG9-1-1 Committee's NG911 GIS Workgroup developed a *Best Practice* document that describes the importance of keeping NG9-1-1 GIS data up-to-date in the state aggregate.

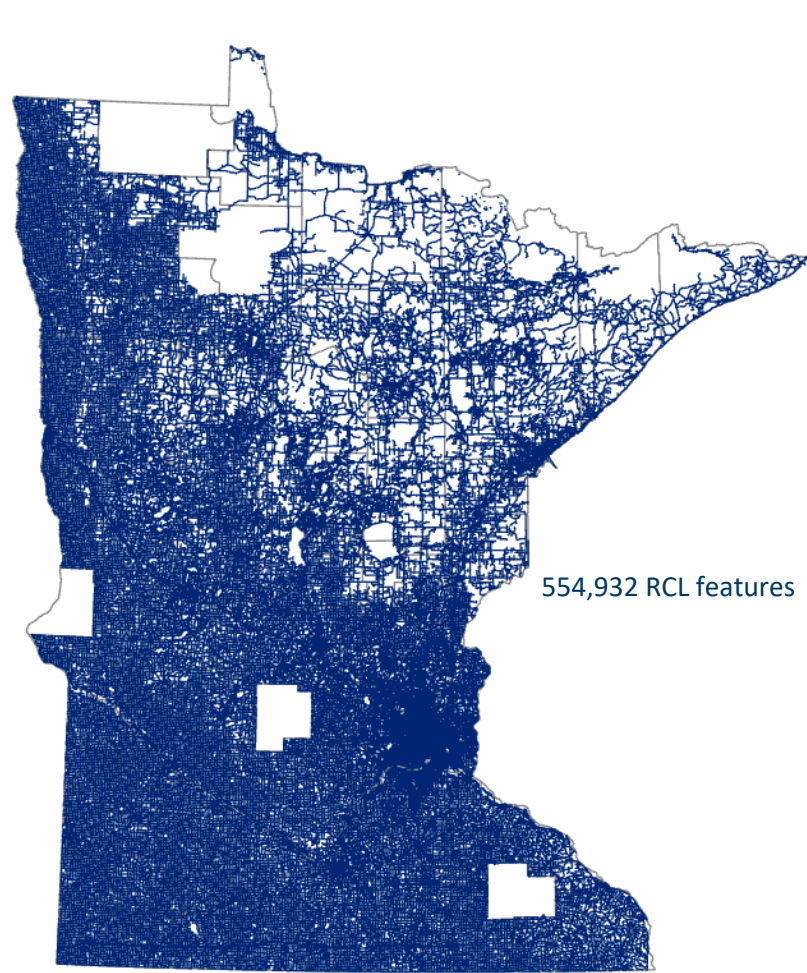
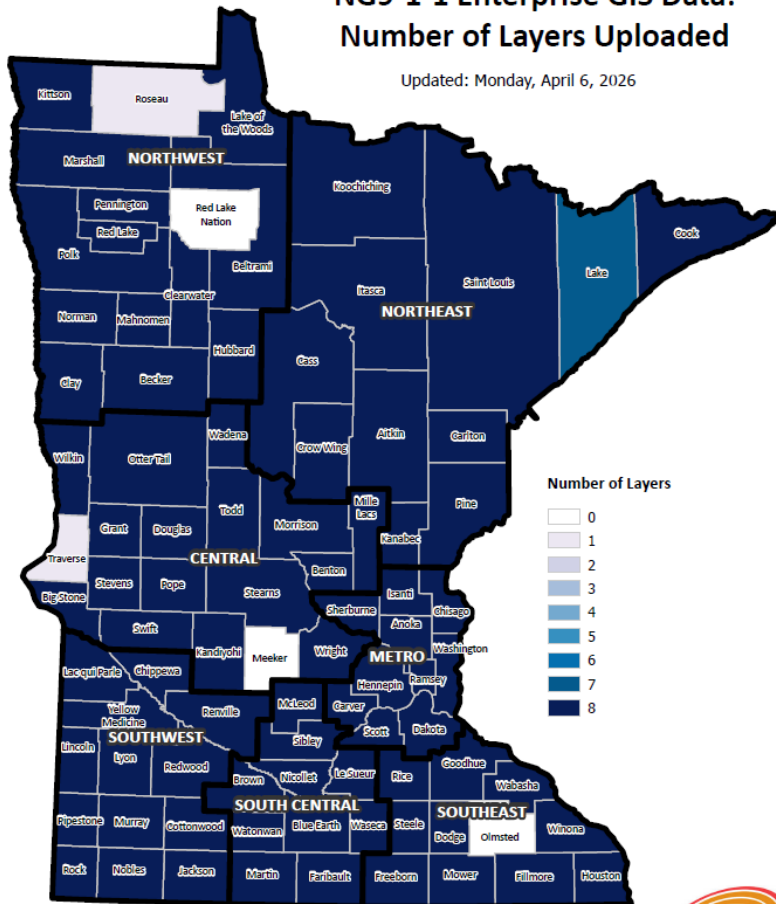
- Minimum update frequency: Once per Year
- Preferred update frequency: Quarterly
- More often as deemed necessary by each data provider.

Statewide Update Recency Status (88 Suppliers)	Address Data Points	SSAP %	Road Centerlines	RCL %	Emergency Service Zones	ESZ %
Updated in past 90 days	27	30.68%	15	17.05%	25	28.41%
Updated between 90 and 365 day	20	22.73%	32	36.36%	20	22.73%
Updated more than 365 days ago	36	40.91%	36	40.91%	37	42.05%
No Data	5	5.68%	5	5.68%	6	6.82%
		53.41%		53.41%		51.14%
Within SECB Best Practice Compliance:		53%		53%		51%

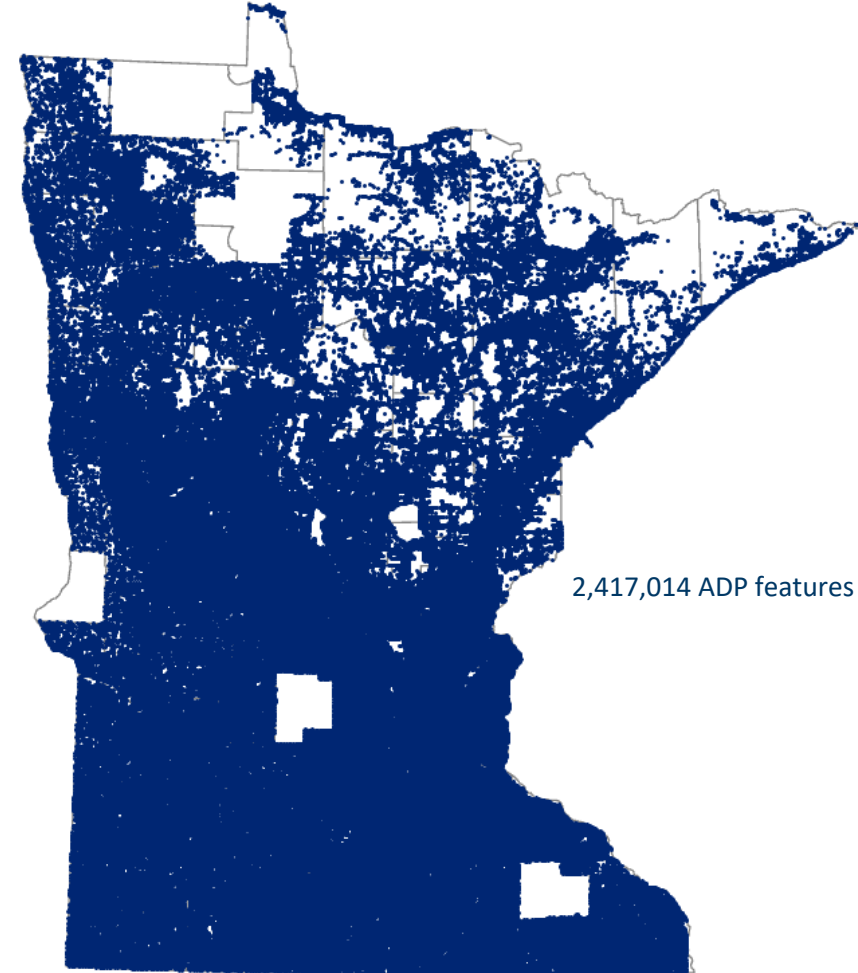
NG9-1-1 Current Aggregate Data Status

NG9-1-1 Enterprise GIS Data: Number of Layers Uploaded

Updated: Monday, April 6, 2026



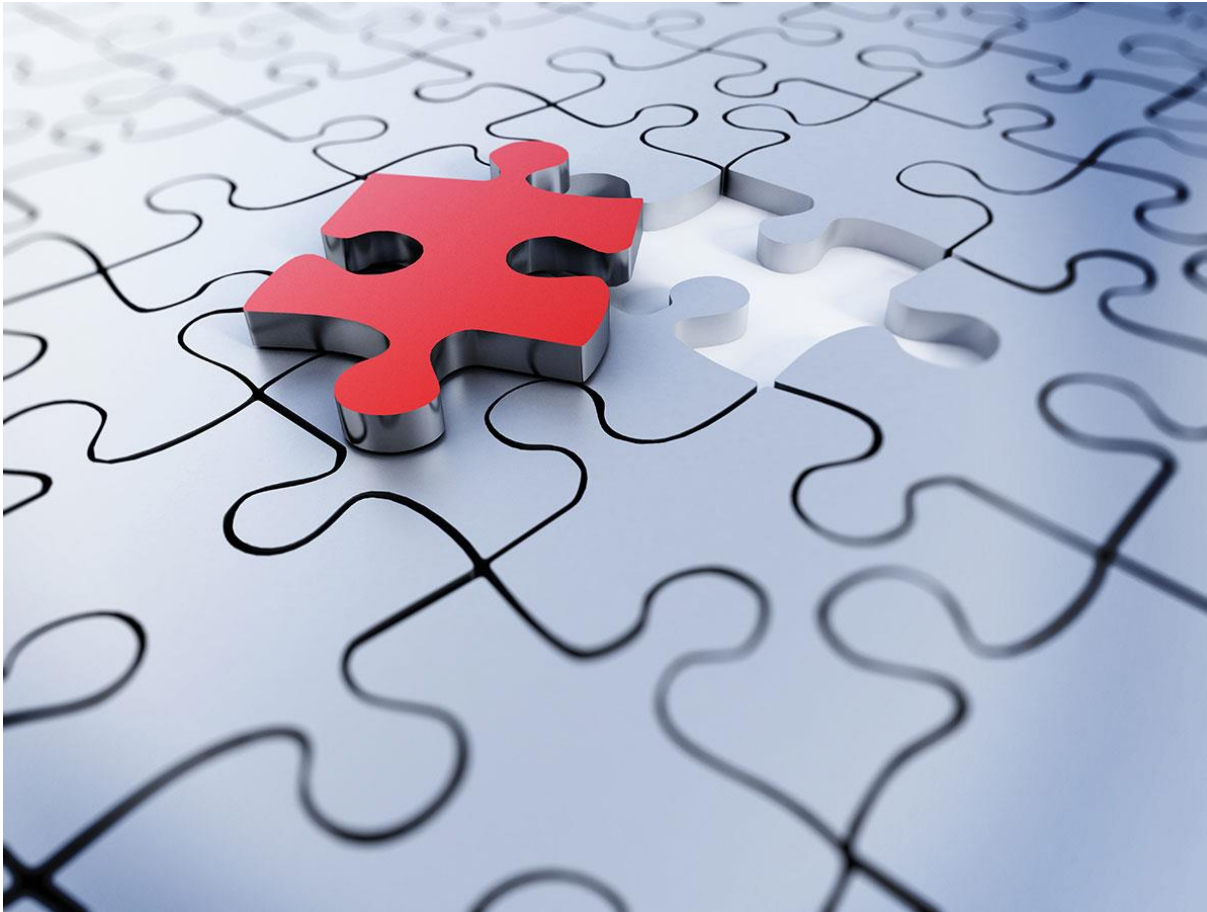
554,932 RCL features



2,417,014 ADP features

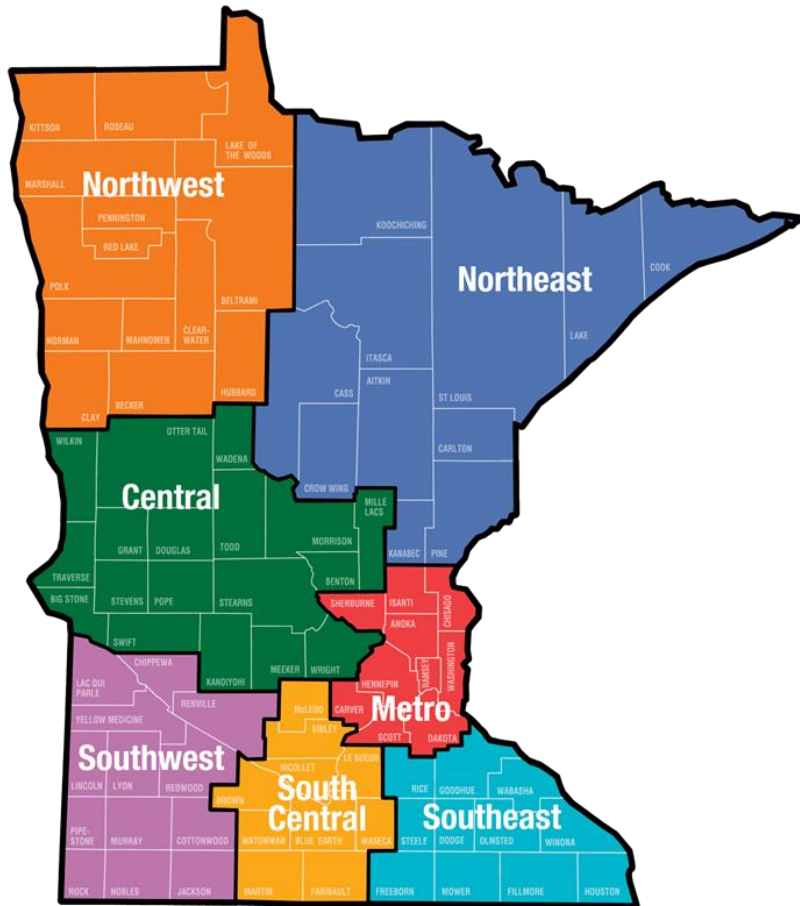


NG911 Information Sharing



- **New** MnGeo developed ArcPro Data Export & Conversion Tool
 - Capitalization case, fully spelled-out, simple validations, domain conversions.
 - [Download from HUB site.](#)
 - **In use by 28 counties!**
- **New** ArcPro Add-In available
 - [November 18, 2025 Training Session](#)
 - Works with ArcPro v.3.4-3.6

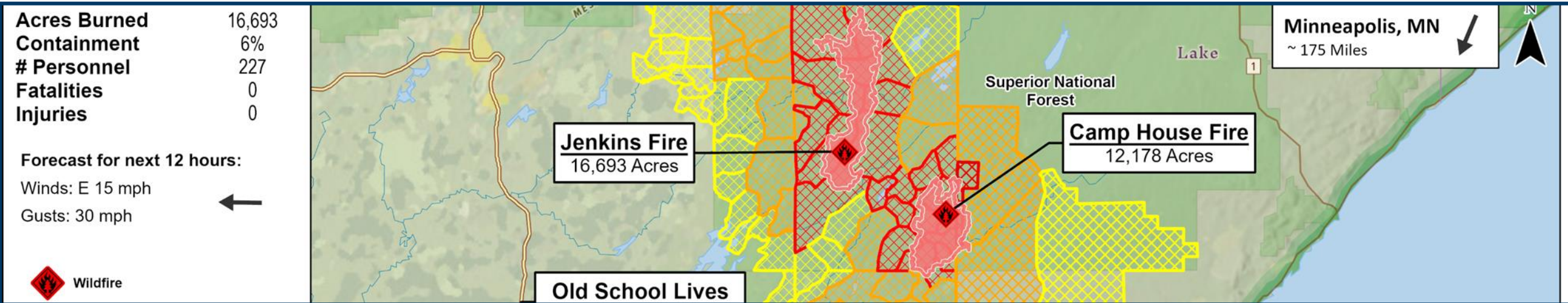
Status of Indoor School Mapping Projects



All SECB regions except the SE: contracted with Critical Response Group who has over 1,650 schools completed.

- CRG's portal has deliverables posted.
- Deliverables owned by SECB region can be accessed through a web portal.
- Deliverables should include GIS-formatted data (geodatabase, shapefile)

SE region: status unknown



Expansion Pre-Planned Evacuation Zone Interoperability

Matt Goodman

Evacuation Zone Interoperability

Interoperability Best Practices for GIS:

Evacuation Zones

An unofficial guide developed in northeastern Minnesota to enhance interoperability of evacuation zone GIS data and applications across the region.

Version 1.0 – edited 6/26/2025

Version 0.3 – edited 6/24/2025

Version 0.2 – edited 6/4/2025

Version 0.1 – edited 2/6/2025

Contributors:

Amy Lewis, Lake County GIS

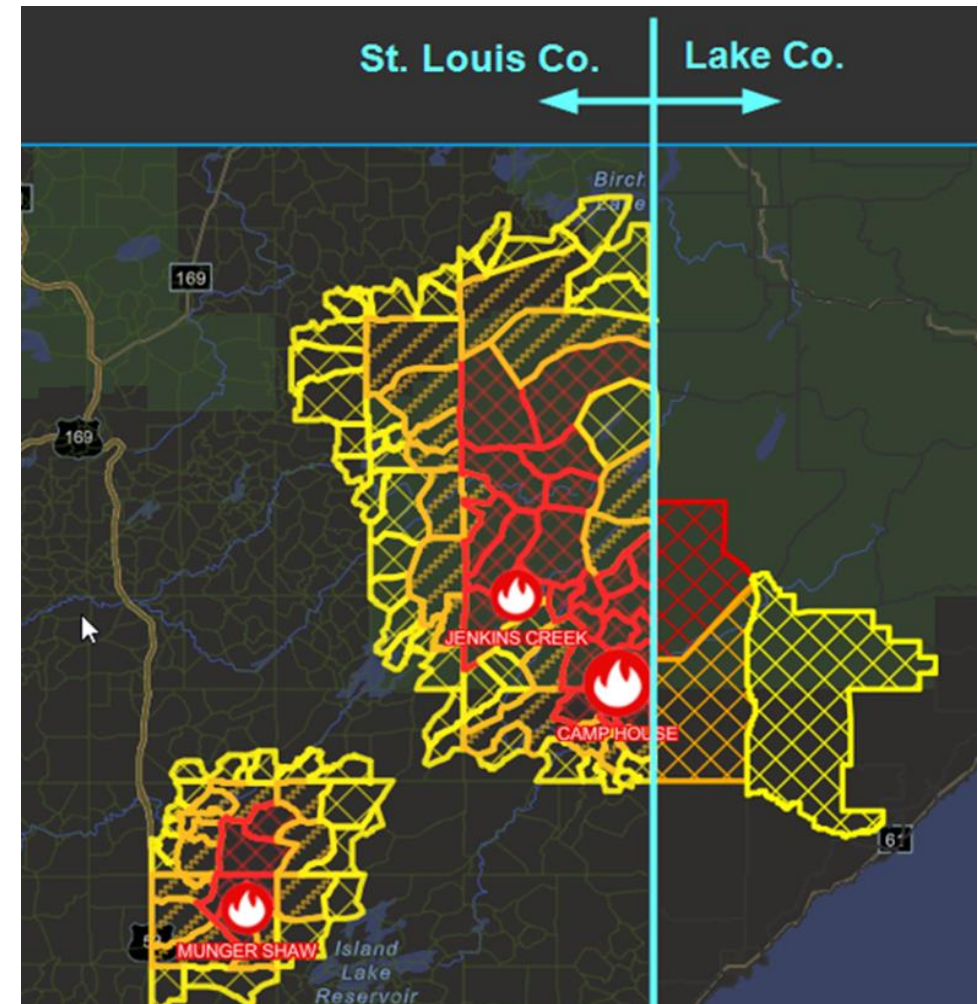
Jared Hovi, Carlton County GIS

Kyle Oberz, Cook County GIS

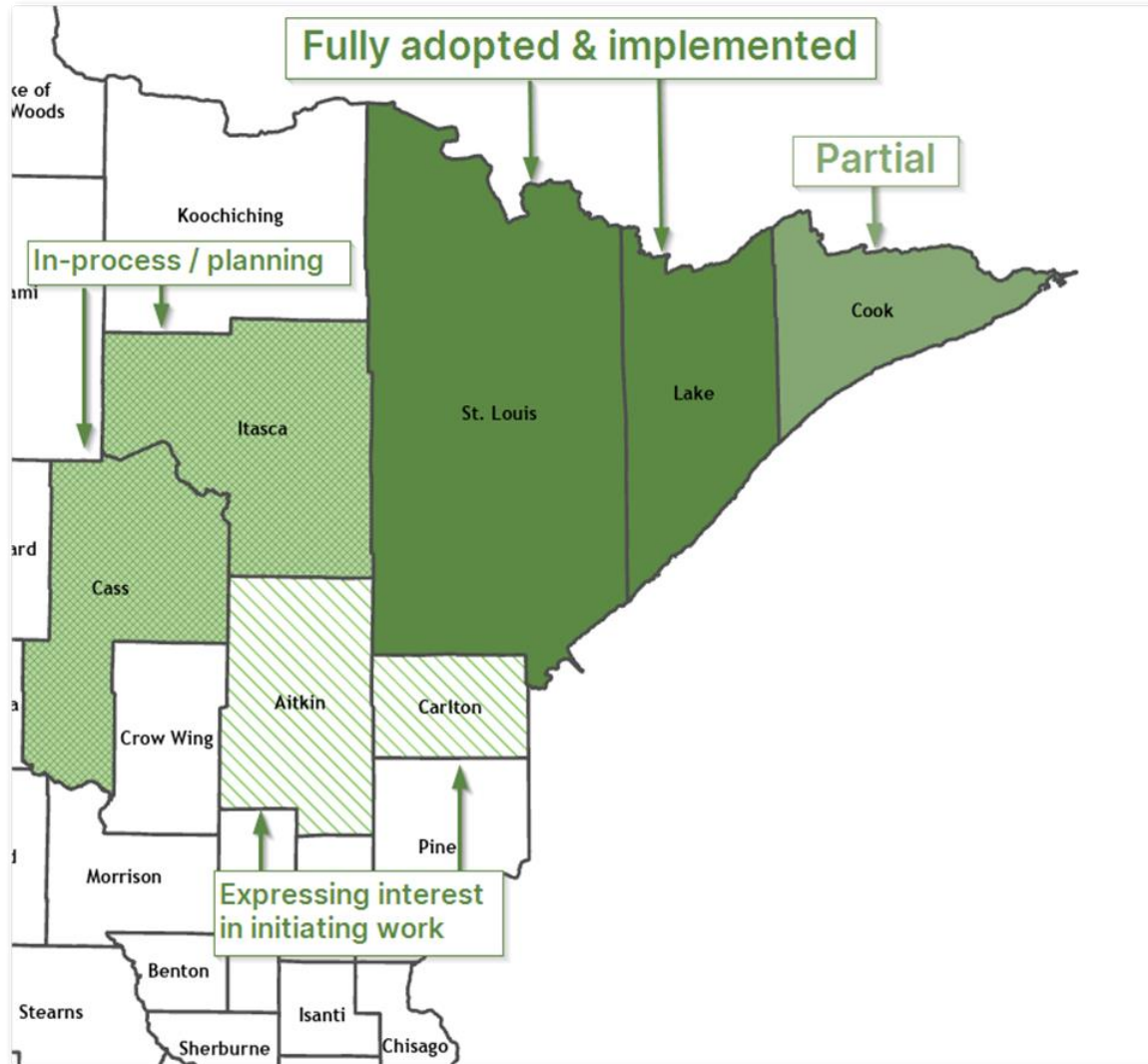
Matt Goodman, St. Louis County GIS



An un-official set of best practices prescribing schema and symbology standards around which neighboring jurisdictions can coalesce for improved interoperability and messaging consistency.



Evacuation Zone Interoperability



Known counties in Northern Minnesota adopting (or hoping to adopt) interoperability guidelines for pre-planned evacuation zones.

Cook, Lake, St. Louis (adopted & implemented)
Itasca, Cass (in-process / wrapping-up)
Aitkin, Carlton (expressing interest)

Thank You!

Rick Schute

rick.schute@ci.stpaul.mn.us

Matt Goodman

651-755-9205

Britta Maddox

Bmaddox@coonrapidsmn.gov

Goodmanm@stlouiscountymn.gov

651-755-9205

763-367-0058

MnGeo Updates

Slaats



Statewide Foundational Datasets: Imagery

Minnesota Geospatial Image Service: local, regional, and statewide imagery in natural color and color-infrared

- **Recently Added:**
 - 2025 NAIP
- **Coming soon:**
 - 2024 Lyon County
 - 1938 Lyon County
- Discussions underway to explore **STAC** and **Cloud Optimized GeoTIFFs (COGs)** for future image services

Interested in adding your imagery?

Contact kory.thurnau@state.mn.us

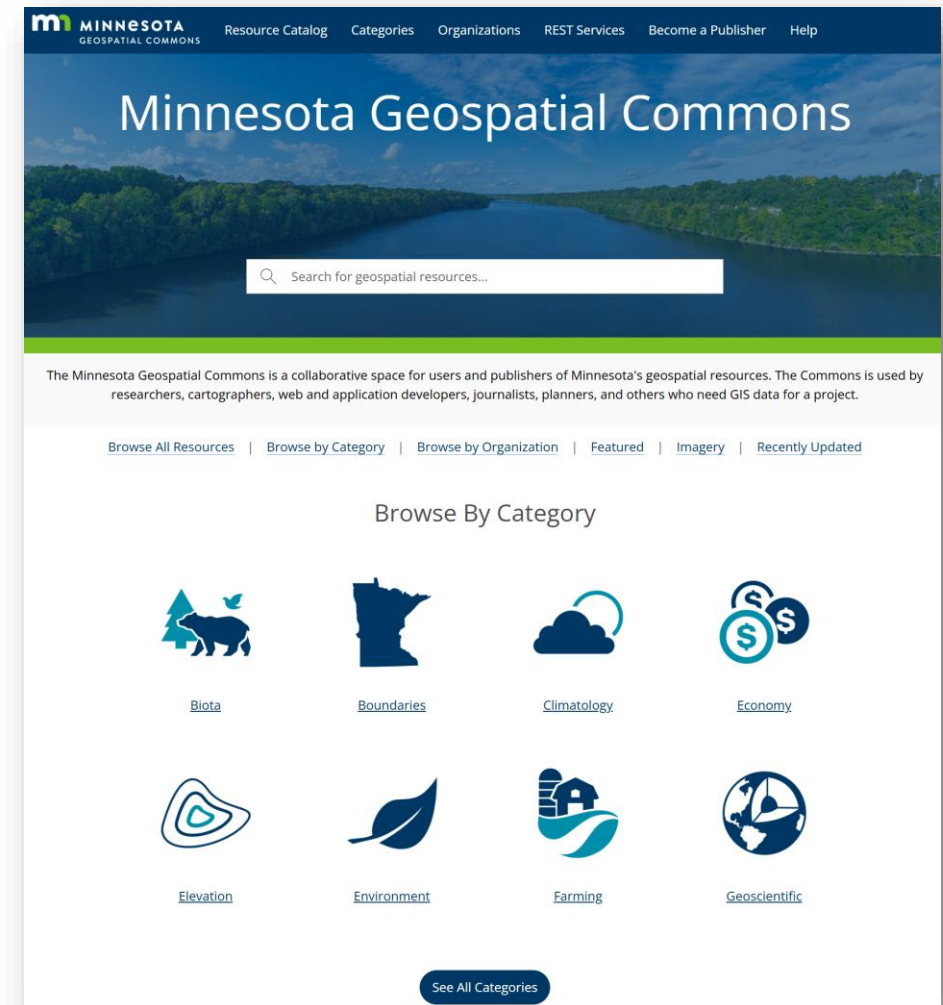


Update: New Geospatial Commons Released!

The original (legacy) Minnesota Geospatial Commons technology was 10 years old, and MnGeo using [MNIT Technology Modernization Funds](#) to *modernize* technology moving from a *file-based system to a web service model* and *improve user and publisher experience*

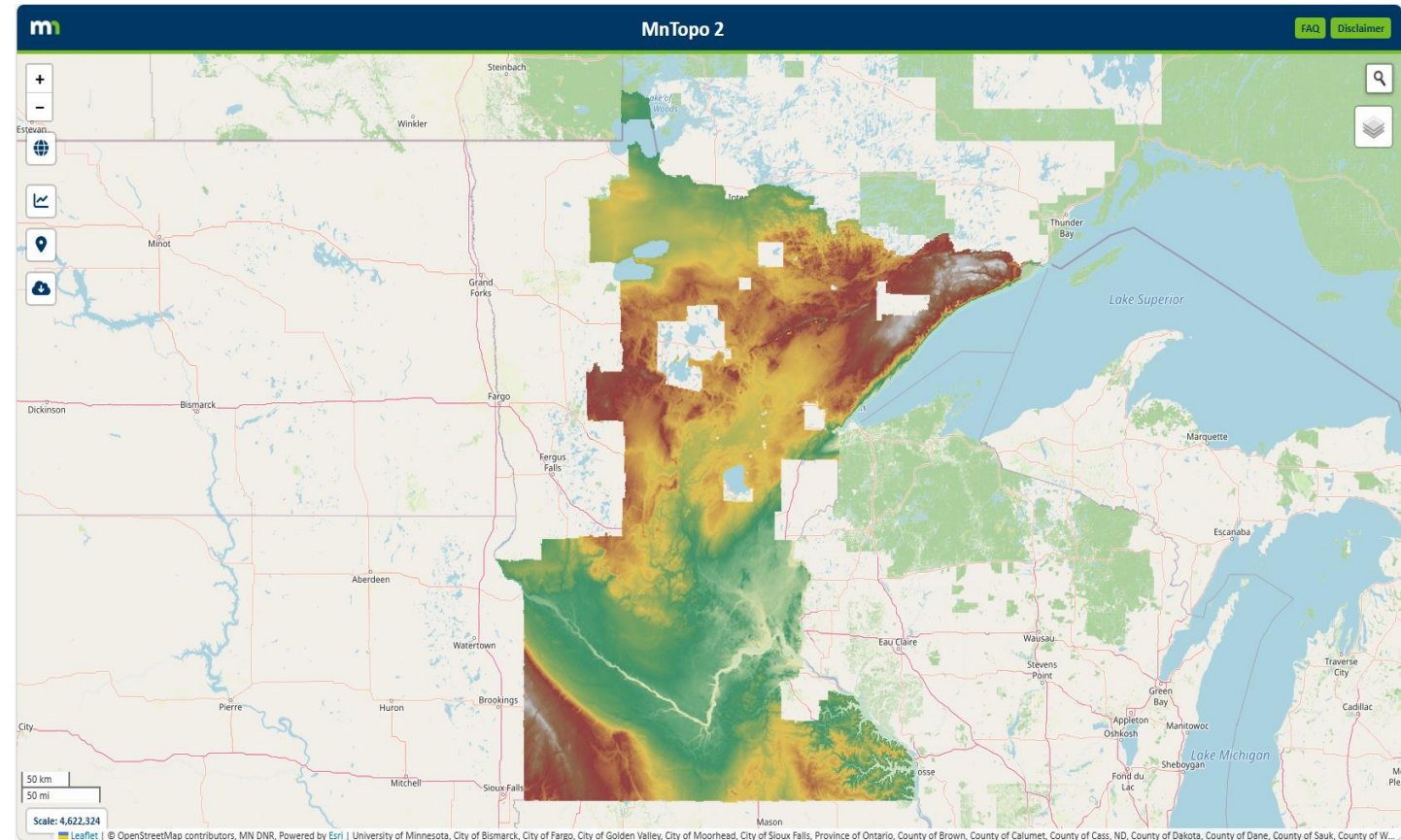
Project updates:

- **New Geospatial Commons was on March 31st successfully!**
- 853 successful resource collaborations and 30 Publishers (as of 5/12/2026)
- Migration of publishers and resources will continue until complete or 6/30/26 (63% resources migrated, 25% In progress, 96% Publishers chose collaboration type)
- Commons communication plan included Information sessions, open office hours, dedicated email address and contact with each publisher to help migration
- MnGeo has applied for additional funding for an enhancement of [MME](#) (Minnesota Metadata Editor) in FY27



MnTopo 2 Update

- MnTopo 2 application released (soft launch March 12, newsletter announcement May 19)
 - Elevation profile and point elevation
 - Downloads for 1st gen data from existing FTP site, 1st and 2nd gen .LAZ from USGS
 - 2nd gen layers; partial seamless 0.5m Lidar DEM, dynamically generated (non-authoritative) contours and hillshade, flight swaths
 - 1st gen layers, 1m DEM, hillshade, contours, FEMA floodplains
 - Layer controls, opacity for raster layers and color options for dynamically drawn contours
- Available 2nd gen data; COGs, VRT, Image and Feature Services
 - Lidar information page - [Second Generation Lidar Elevation Data for Minnesota: 2021-2024](#)
 - STAC Browser - [Minnesota Geospatial STAC Catalog](#)



MnTopo 2 Update: Ongoing and Upcoming Work

- Complete the creation of seamless 0.5m Lidar DEM for lidar acquisition blocks with available vendor delivered data for Red River Basin LAB.
- Running scripts to generate additional derived products; authoritative contours, hillshade and HPI
- MnTopo 2 trainings/awareness
 - 3DGeo and project stakeholders, 4/29
 - GIS bytes (state agency only), 5/26
 - Training for public, TBD
 - GIS/LIS Conference

Legislative Updates

- Minnesota: PLSS Funding Proposal
- Minnesota: Data Practices Act proposed changes

Executive Team Updates

Mayer

Mission: The Executive Team of the MN Geospatial Advisory Council supports the functions of the GAC. The Executive Team authors the GAC workplan and aligns the activities of the GAC to adhere to the plan. The Executive Team supports the GAC by organizing the quarterly public meetings, gathering feedback from the GIS community through the priority surveys, and ensuring the committee work supports the priorities.



2026-27 GAC Executive and Leadership Teams

Executive Team

Chair

Tanya Mayer

Vice Chair

Britta Maddox

Secretary

Michael Krueger

GIO

Alison Slaats

Leadership Team

Executive Team members

Past Chair or Vice Chair

Heather Albrecht

3 GAC member volunteers

Dave Brandt

Stacey Stark

Ryan Stovern

GAC Executive Team Updates

Since we last met on March 11

- Executive Team Meeting – April 3, 2026
- Leadership Team Meeting – April 22, 2026
- GAC Committee Leadership Retreat: 3 small group planning meetings – March-April 2026
- 2 requests for letters of support (Discussion on next slide)
- 20 Individual Member Coffee Chats with Alison and Tanya – March 23 through June 1

Requests for GAC Letters of Support

Background

- The GAC receives periodic requests for letters of support - received 2 requests for since our last GAC meeting
- GAC does not have a defined process to respond on behalf of the GAC
- Turnaround time is often short
- Discussion with the Executive and Leadership Teams
 - Authority: Who can write a letter on behalf of the GAC, does it need full GAC vote
 - Timeliness: GAC meetings are infrequent, special meetings require 3-days notice, e-votes do not meet open meeting law
 - Process: Publish guidelines and instructions for requesting a letter of support on the website
 - Process: Revisit at the beginning of each term
 - Recommendation: Bring this question to the full GAC for decision

Requests for GAC Letters of Support

Types of Requests

- Non-funding example
 - Support for the preservation of the Natural Resource Atlas.
 - Support and encouragement requested by St. Cloud State University (SCSU) for the reinstatement of the undergraduate and graduate programs in Geography and Geographic Information Systems at SCSU.
- State Program or Legislative funding example
 - Support of State Legislation to fund the remonumentation of the PLSS of Minnesota.
 - Support for MnGeo to use the Technology Modernization Fund funding to improve the MN Geospatial Commons.
- Directed funding example
 - Support requested *from a specific city in Minnesota* for Congressionally-directed Federal funding *to that specific city* to implement a modern NENA compliant physical addressing system.
 - Support requested *from a specific Minnesota college or university* for Congressionally-directed Federal grant *to that specific Minnesota college or university* to enhance their geospatial science program.

Requests for GAC Letters of Support

GAC Discussion

- What Guidelines should the GAC follow to send a letter of support? 4 options
 1. Full GAC membership approval – requiring a special meeting of the GAC
 - ✓ GAC membership has opportunity to review, full representation of GAC support, longer turn-around
 2. GAC give authority for decision to the Executive Team *or* Leadership Team, with notification to GAC
 - ✓ Subgroup of GAC membership leadership can review on behalf of the full membership, faster turn-around
 3. GAC give authority to the Chair, with notification to the GAC
 - ✓ Chair can review on behalf of the full membership, fastest turn-around, prone to questions or dissent from GAC or community members
 4. Combination based on the request “type” of letter (non-funding vs. state program related vs. directed funding)
- Publish guidelines and instructions for requesting a letter of support on the website
- Revisit at the beginning of each term

GAC Executive Team Updates

What's Next

- GAC Committee Leadership Retreat
 - May 20, 2026, 2:00 – 4:00 pm, in-person
- Executive Team Meeting – August 14, 2026
- Leadership Team Meeting – August 19, 2026
- GAC Meeting
 - September 16, 2026, 11:00 – 2:00 pm, in-person

Award Nomination Deadline Reminders

Governor's Certificate Award for Exemplary Geospatial Projects

- Key Deadlines for 2026
 - **June 1** - Submit a preliminary nomination packet to the Awards Committee at gisinfo.mngeo@state.mn.us
 - **June 7** - Awards Committee provides feedback to all groups submitting nominations
 - **June 30** - Final nomination packet is due to MnGeo

MN GIS/LIS Award Nominations

- Awards
 - Lifetime Achievement
 - Polaris Leadership
 - Distinguished Educator
 - Emerging Professional
- Nominations Deadline
 - **May 31, 2026**

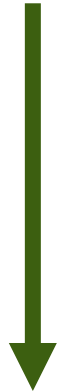
Desired GAC outcomes for 2026-27 Term

- Align GAC structure
 - Support collaboration between the GAC and its committees by having a GAC member in leadership
 - Provide structure to GAC priority projects by aligning them with GAC committees
 - Make it easier for GAC members to be involved by asking them to join a committee or subgroup
- Foster collaboration with Minnesota Geospatial Information Office (MnGeo), MNIT
 - MN Statute 16E.30 GEOSPATIAL INFORMATION OFFICE. Subd. 8. Geospatial Advisory Council created. (a) The chief information officer must utilize a governance structure that includes an advisory council to provide recommendations for improving the operations and management of geospatial technology within state government and also on issues of importance to users of geospatial technology throughout the state.
 - (b) The Geospatial Advisory Council must advise the Minnesota Geospatial Information Office regarding the improvement of services statewide through the coordinated, affordable, reliable, and effective use of geospatial technology.

GAC Goals for 2026-27 Term

- Increase duration of priority project work to align with full GAC term
 - Completed
- Align GAC committees and priority projects
 - Completed
- Improve committee and workgroup reporting
 - Completed
- Additional GAC member support for committees
 - Completed
- Increased participation of GAC committee and sectors in meetings
 - In progress: Contribute a minimum of one sector presentation during the two-year term
 - In progress: Each committee will present at (a minimum of) one quarterly GAC meeting during each 2-year term
- Replace GAC website and committee pages with Esri Hub
 - In progress
- Ease transition of GAC membership and leadership between terms
 - Completed: GAC term FY2026-27 member-orientation
 - Completed: Committee Leadership Meeting (January 2026)
 - Completed: Committee Leadership Retreat (May 2026)

GAC Sector and Committee Presentation Schedule



GAC Meeting	GAC Sector	GAC Committee
9/10/2025	MN GIS/LIS Consortium	
12/17/2025	County Government - Greater MN	
	MetroGIS	
3/11/2026	Tribal Government	Awards
	City Government - Greater MN	CANDO
5/20/2026	County Government - Metro	Outreach
	City Government - Metro	Standards
9/16/2026	Higher Education	Emergency Preparedness
	K-12 Education	K-12 Education
		Data Endorsement
12/16/2026	State Government	PLSS Preservation
	Surveying	Parcels and Land Records
3/10/2027	Federal Government	3D Geomatics
	Non-Profit	Archiving
5/26/2027	Regional Government - Metro	
	Regional Government - Greater MN	
Participate with appropriate Sector	At-Large	

Thank You!

Tanya Mayer

tanya.mayer@metc.state.mn.us

Stay up to date on GAC news: <https://www.mngeo.state.mn.us/newsletter.html>

Round Robin / Announcements

All



Member Announcements

- **City, Twin Cities Metro**
 - Dennis Tumberg, *City of Chanhassen*
- **City, Greater Minnesota**
 - Michael Krueger, *City of Moorhead*
- **County, Twin Cities Metro**
 - Michelle Clasen, *Washington County*
- **County, Greater Minnesota**
 - Ryan Stovern, *St. Louis County*
- **Regional Government, Twin Cities Metro**
 - Mary Mortensen, *Met Council*
- **Regional Government, Greater Minnesota**
 - Karissa Beierle Pavek, *Fargo-Moorhead Metropolitan Council of Governments*
- **State Government**
 - Amy Harrigan, *MnDOT*
 - Kari Geurts, *MINIT DNR*
- **Federal Government**
 - Mitch Bergeson, *US Geological Survey*
- **Tribal Government**
 - Ryan Bonney, *Shakopee Mdewakanton Sioux Community*
- **Nonprofit Organization**
 - Jessica Fendos, *LOGIS*
- **Business**
 - Gerry Sjerven, *Minnesota Power*
 - Kendis Scharenbroich, *Pro-West & Associates*
- **K-12 Education**
 - Shana Crosson, *Education Consultant/Mapping Together*
- **Higher Education**
 - Rama Mohapatra, *Minnesota State University, Mankato*
 - Stacey Stark, *U-Spatial / UMN Duluth*
- **Surveyor**
 - Pat Veraguth, *Douglas County*
- **MetroGIS**
 - David Brandt, *MetroGIS | Washington County*
- **MN GIS/LIS Consortium**
 - Carla Coates, *Minnesota GIS/LIS Consortium | MN DPS*
- **At-Large**
 - Britta Maddox, *Anoka County*
 - Heather Albrecht, *Hennepin County*
 - Matt Goodman, *St. Louis County Sheriff's Office*
 - Quentin Ikuta, *National Indian Carbon Coalition*
 - Rick Schute, *City of St. Paul*
 - Tanya Mayer, *Metropolitan Council*
- **Chief Geospatial Information Officer (ex-officio)**
 - Alison Slaats, *MNIT MnGeo*

Non-Member Guests

Share your news!

Wednesday, September 16, 2026

11:00 a.m. – 2:00 p.m.

Hybrid

(in-person and online via Teams)

Agenda Item 13

Adjourn*

Mayer



**Motion may be required*

Thank You!

