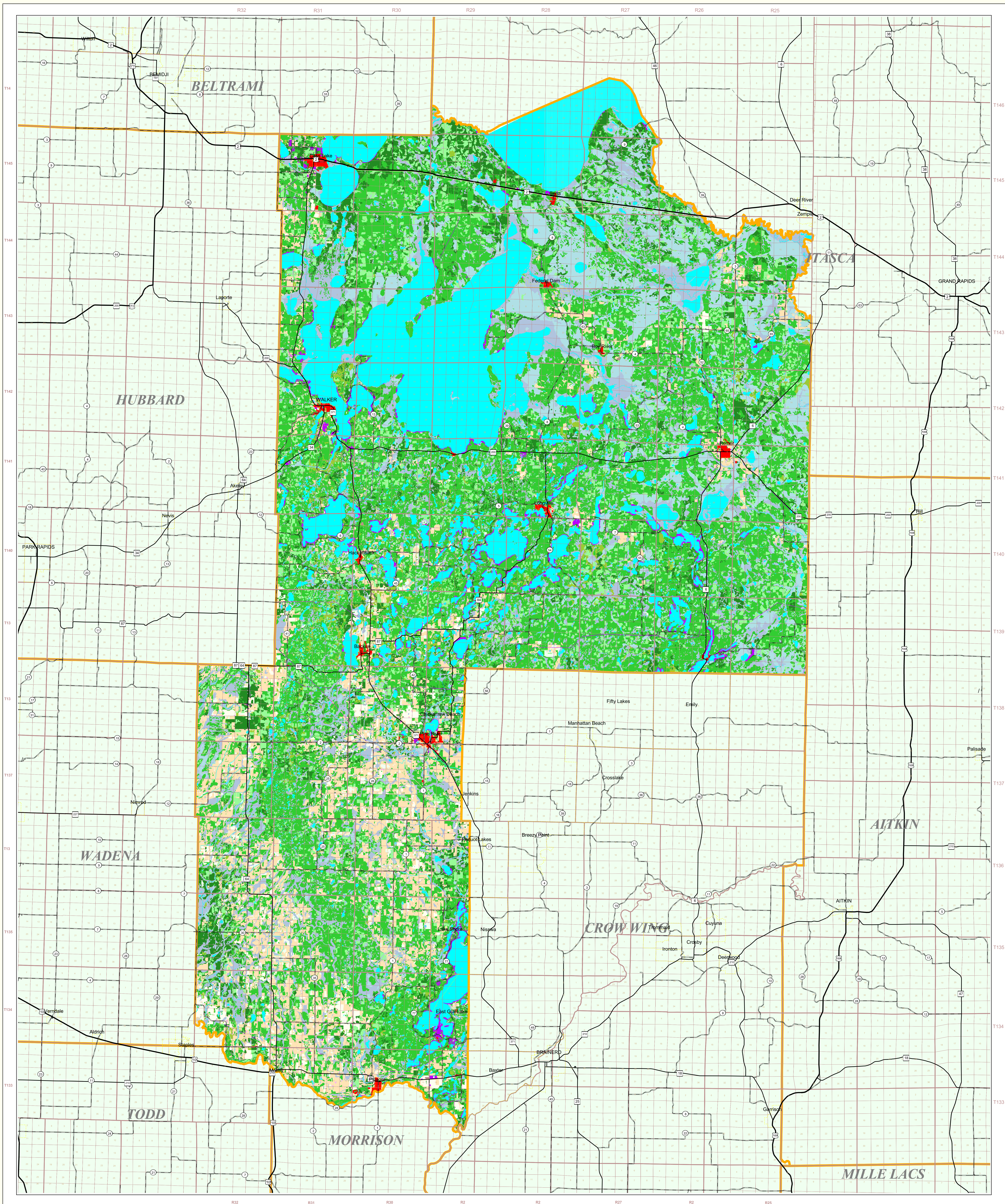


Cass County Land Use and Cover

State of Minnesota

June 18, 1995



MAP FEATURES

Land Use

- Urban/Industrial
- Farmsteads and Rural Residences
- Other Rural Developments
- Cultivated Land
- Grassland
- Shrubby Grassland
- Regeneration/Young Forest
- Mixed Forest
- Deciduous Forest
- Coniferous Forest
- Wetlands: Bogs
- Wetlands: Marsh and Fens
- Water
- Gravel Pits and Open Mines
- Bare Rock

Cities

- COUNTY SEAT
- Other Cities

Highways

- Interstate Highway
- U.S. Trunk Highway
- State Trunk Highway
- County State-Aid Highway (CSAH)

Public Land Survey

- State Boundary
- County Boundary
- Township & Range Section
- T34 Township
- R25W Range & Direction

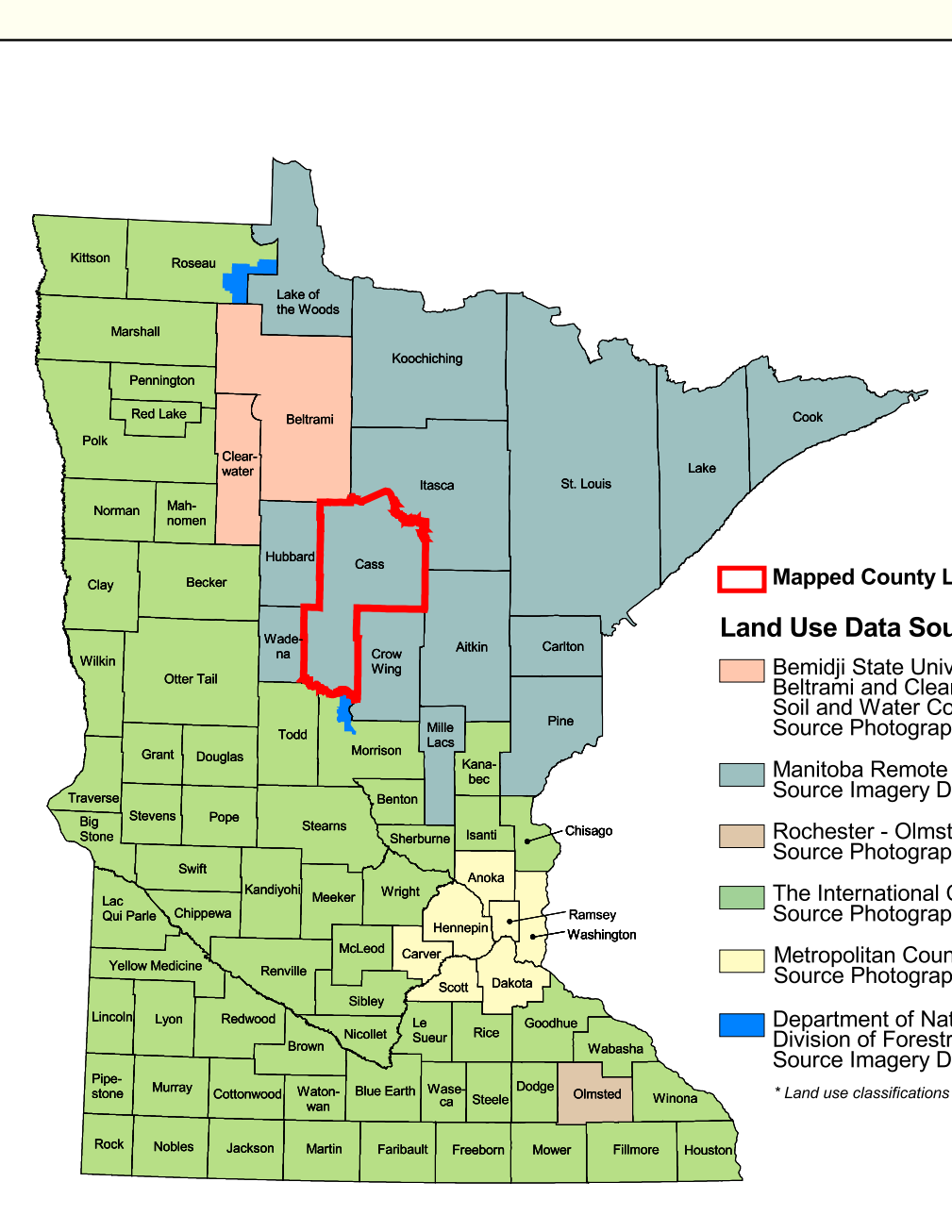
Data Sources

- 1. Minnesota Remote Sensing Center, Source Imagery Dates: 1987-1994
- 2. Minnesota Central Files, U.S. Bureau of the Census, 1995
- 3. Minnesota Department of Transportation, 1997-98

Cass County Land Use Statistics

Source: The Land Management Information Center (LMIC)

DESCRIPTION	ACRES	% ACRES
Urban/Industrial	5338.8	0.3
Farmsteads and Rural Residences	47427.7	0.3
Other Rural Developments	18370.7	1.1
Cultivated Land	17526.9	1.1
Grassland	140756.7	9.1
Shrubby Grassland	13374.8	0.9
Regeneration/Young Forest	92297.3	6.2
Mixed Forest	20945.7	1.4
Deciduous Forest	24535.1	16.3
Coniferous Forest	102861.3	69.3
Wetlands: Bogs	120278.8	7.9
Wetlands: Marsh and Fens	280434.1	19.3
Water	254249.9	16.8
Gravel Pits and Open Mines	865.5	<0.1
Bare Rock	17.7	<0.1
TOTAL	1,543,274	100%



Map Projection: UTM, Extended Zone 15
Datum: NAD83

Scale: 0 to 8 Miles, 0 to 12 Kilometers

ABOUT THIS MAP

Data Sources: With the exception of roads, the land use/land cover categories depicted on this map are derived from remote sensing data. The data sources used are: 1. Remote State University - Department of Geography, Beltrami and Cass County Soil and Water Conservation Districts, Source Imagery Dates: 1991-1995; 2. Minnesota Remote Sensing Center, Source Imagery Dates: 1987-1994; 3. Rochester - Olmsted Planning Department, Source Imagery Dates: 1992; 4. The International Coalition, Source Imagery Dates: 1988-1990; 5. Metropolitan Council, Source Imagery Date: 1990; 6. Department of Natural Resources, Division of Forestry - Resource Assessment, Source Imagery Dates: 1992, 1993 and 1995.

Data Interpretation and Comparison: The Minnesota Remote Sensing Center (MRSC) interprets the Landsat imagery using a supervised maximum likelihood classification. These classification results were spatially processed prior to an exhaustive manual verification process using the 1:250,000 scale topographic, traditional feature types (e.g., contour, road, deciduous forest canopy) were processed by first developing a classification using training area samples of individual types and then by applying a final classification result to verify corrected contours, roads, forest canopy being outside of the pure class confidence interval were then assigned to a single mixed class.

MRSC: used the 1988 and 1990 data to reclassify some Lake County coniferous areas to mixed forest. The "regeneration/young forest" category was spot checked by Minnesota Department of Natural Resources, Forestry Division personnel, after which they request the category additions to include some older trees on poorer sites.

This data exhibits a per class and overall classification accuracy of not less than 93 percent.

On-line documentation: http://rcy.lmcc.state.mn.us/remote/arc_mn.html

Credits and Acknowledgements

Data collection and interpretation supported by the Minnesota Future Resources Fund as recommended by the Legislative Commission on Minnesota Resources (LCMR).

The following groups also participated over an extended period:

- Linnett Geosystems, Winthrop
- The Minnesota Remote Sensing Center, Winthrop
- Minnesota Department of Natural Resources
- University of Minnesota - Department of Forest Resources
- Widseth, Smith and Nolting

Map Projection: UTM, Extended Zone 15
Datum: NAD83

Liability statement

The Land Management Information Center (LMIC) does not warrant the results you may obtain by using this map. This map is provided "as is" without recourse or implied warranties, including warranties of merchantability and fitness. In no event will LMIC be liable for any consequential, incidental or special damages, including any lost profits or lost savings, even if a LMIC representative has been advised of the possibility of such damages or any other claim by any third party.

Distribution information

This map was prepared in April, 1995. Both the map and the data used to create it are available from the Land Management Information Center at Minnesota State.

You may also view a generalized, interactive land use map of Minnesota, along with detailed information about land use data at:

<http://mapserver.lmic.state.mn.us/landuse>

For further assistance, or to order copies of this map, contact:

Land Management Information Center
 658 Cedar Street
 Central Building, Room 330
 St. Paul, MN 55155

Phone: (651) 296-1211
 FAX: (651) 296-1212
 E-Mail: clearinghouse@lmic.state.mn.us

