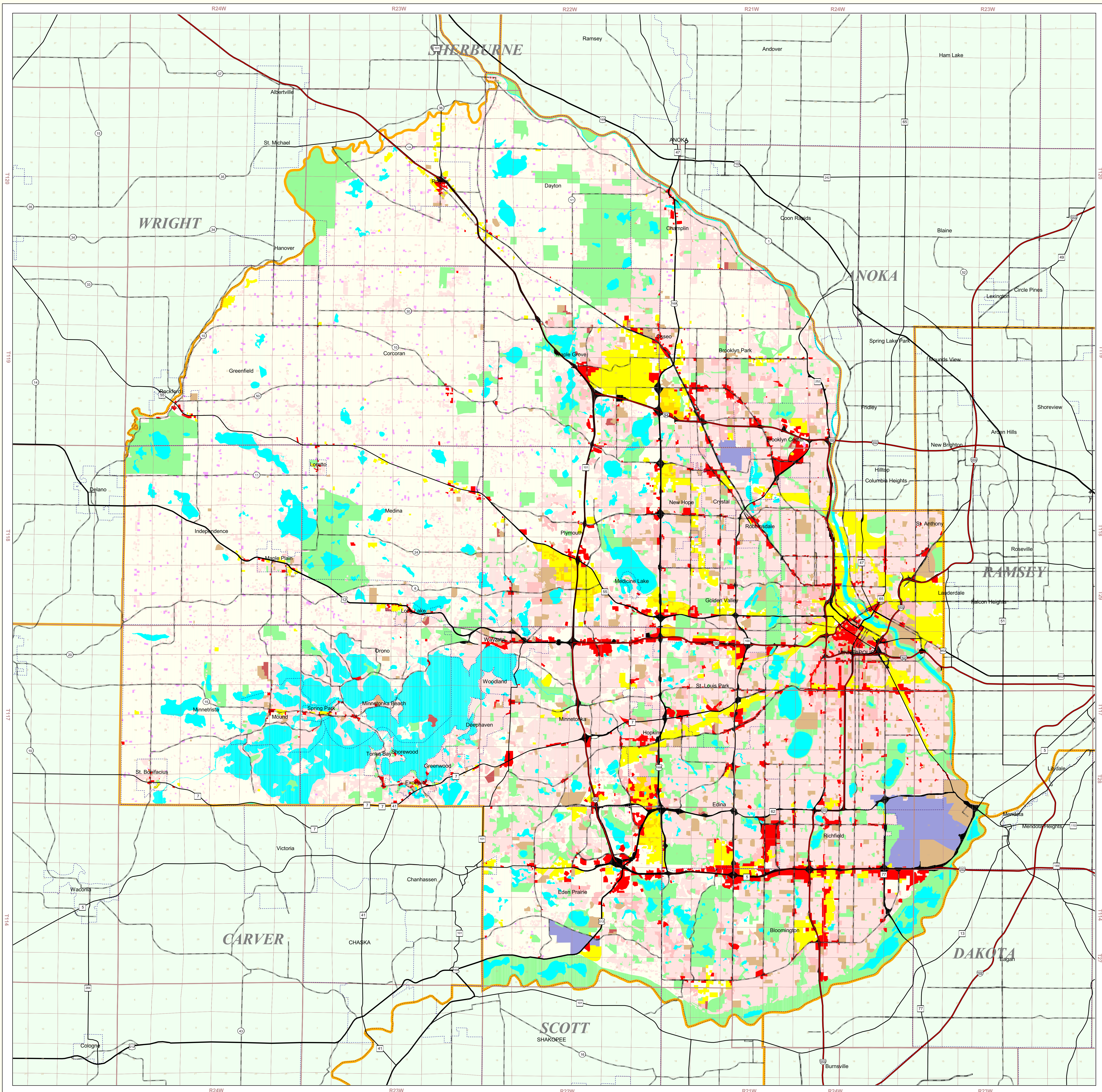


# Hennepin County Land Use and Cover

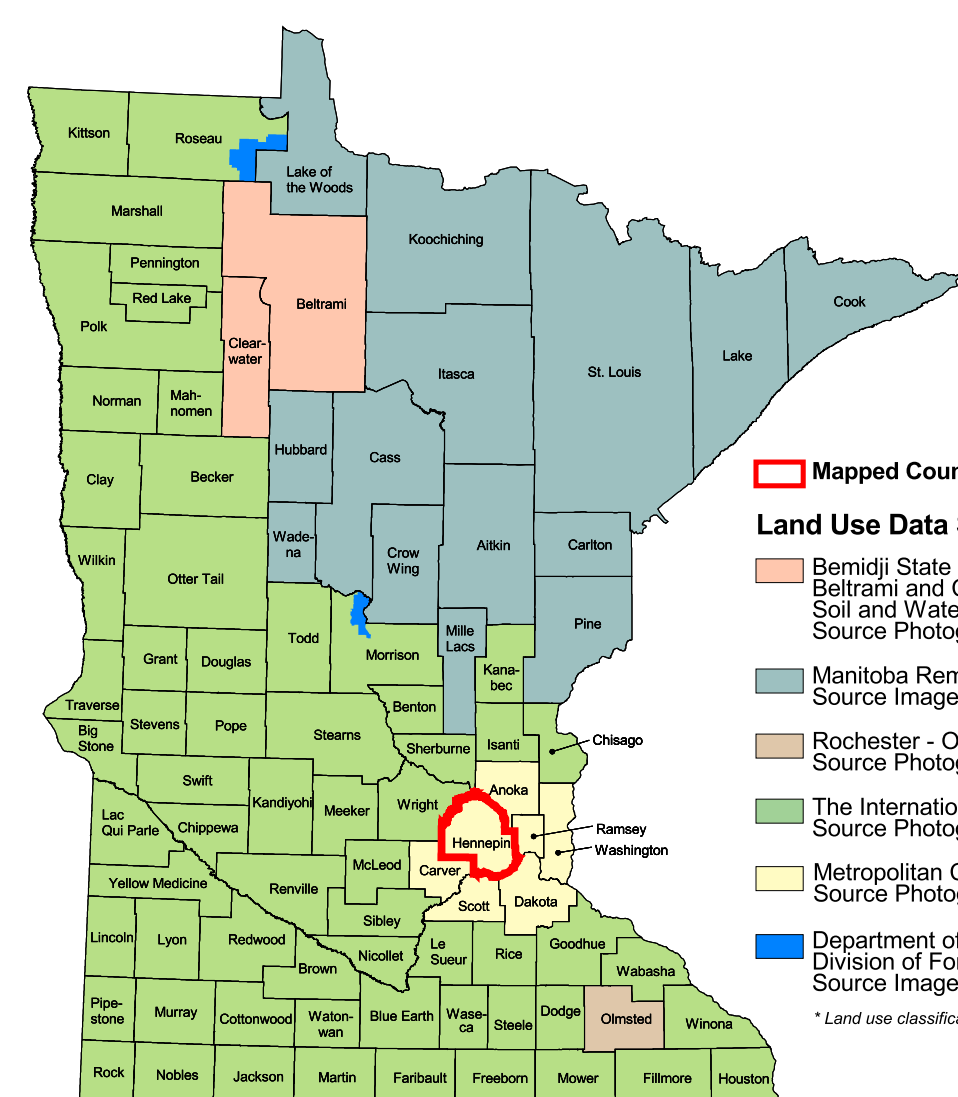
State of Minnesota  
1990



- MAP FEATURES**
- Land Use**
- Single Family Residential
  - Multi-Family Residential
  - Farmsteads
  - Commercial
  - Industrial
  - Industrial Parks not Developed
  - Vacant/Agricultural
  - Parks & Recreation Areas
  - Open Water Bodies
  - Public-Semi Public
  - Public & Semi-Public Vacant
  - Airports
  - Major Four Lane Highways
- CITIES**  
COUNTY SEAT  
Other Cities
- Highways**
- Interstate Highway
  - U.S. Trunk Highway
  - State Trunk Highway
  - County State-Aid Highway (CSAH)
- Public Land Survey**
- State Boundary
  - County Boundary
  - Township & Range
  - Section
  - T34 Township
  - R25W Range & Direction

**Hennepin County Land Use Statistics**  
Source: The Land Management Information Center (LMIC)

DESCRIPTION	ACRES	% ACRES
Single Family Residential	99531.8	25.6
Multi-Family Residential	18178	5
Farmsteads	2237.8	0.6
Commercial	10151	2.6
Industrial	15926	4.1
Industrial Parks not Developed	966.6	0.2
Park/Agricultural	15244.7	39.3
Parks & Recreation Areas	3863.7	10.3
Open Water Bodies	3292.3	8.4
Public-Semi Public	11339.2	29
Public & Semi-Public Vacant	417.2	0.1
Airports	353.6	0.9
Water Four Lane Highways	7333.9	19
<b>TOTAL</b>	<b>388,041</b>	<b>100%</b>



**ABOUT THIS MAP**

**Data Sources:** The land use / land cover categories displayed on this map were derived from rectified air photos (1:38,400 taken on May 4 or May 5, 1990). Reverse directories, non-residential building permits and field checks were used when a land use could not be determined from the photos.

**Data Interpretation and Computerization:** First, air photos were rectified by Marklund to match a photo grid used by the Metropolitan Council. Corner ties of the air photo grid and the Minnesota Department of Transportation's digital road centerline layer (1:24,000) were used to register the photos. The photos were then interpreted by Metropolitan Council staff. Next, mylars of 1980 and 1984 land use (1:9,600) were overlain on the photos and changes were delineated. Corrections to the earlier data sets that had been submitted by cities and townships were also incorporated. Reverse directories, non-residential building permits and field checks were used when land use could not be determined from the photos. The updated mylars were digitized in a vector format as 251 individual files. The files were then edge-matched and registration corrections made using the road centerlines.

The land use / land cover data was compiled to meet National Map Accuracy Standards at the 1:24,000 scale (within approximately 16.5 meters of actual location), although some instances show offsets as large as 70 meters.

**On-line documentation:** <http://lmc.lmc.state.mn.us/mis/landdata/usa90.html>

**Credits and Acknowledgements**  
Seven-county metropolitan land use data provided by:  
Metropolitan Council

**Liability Statement**  
The Land Management Information Center (LMIC) does not warrant the results you may obtain by using this map. This map is provided "as is" without express or implied warranties, including warranties of merchantability and fitness. In no event will LMIC be liable for any consequential, incidental or special damages, including any lost profits or lost savings, even if a LMIC representative has been advised of the possibility of such damages or any other claim by any third party.

**Map Projection:** UTM, Extended Zone 15  
**Datum:** NAD83

**Distribution Information**  
This map was prepared in April, 1999. Both the map and the data used to create it are available from the Land Management Information Center at Minnesota Planning.

You may also view a generalized, interactive land use map of Minnesota, along with detailed information about land use data at:  
<http://mapserver.lmic.state.mn.us/landuse>

**For further assistance, or to order copies of this map, contact:**  
Land Management Information Center  
658 Cedar Street  
Centennial Building, Room 330  
St. Paul, MN 55155  
Phone: (651) 296-1211  
FAX: (651) 296-1212  
E-Mail: [clearinghouse@mnplanning.state.mn.us](mailto:clearinghouse@mnplanning.state.mn.us)

1. Generalized Land Use for the Twin Cities Metropolitan Area, Metropolitan Council, 1990.  
2. 1992 Census of Population, U.S. Bureau of the Census, 1995.  
3. Minnesota Department of Transportation, 1997-98.

