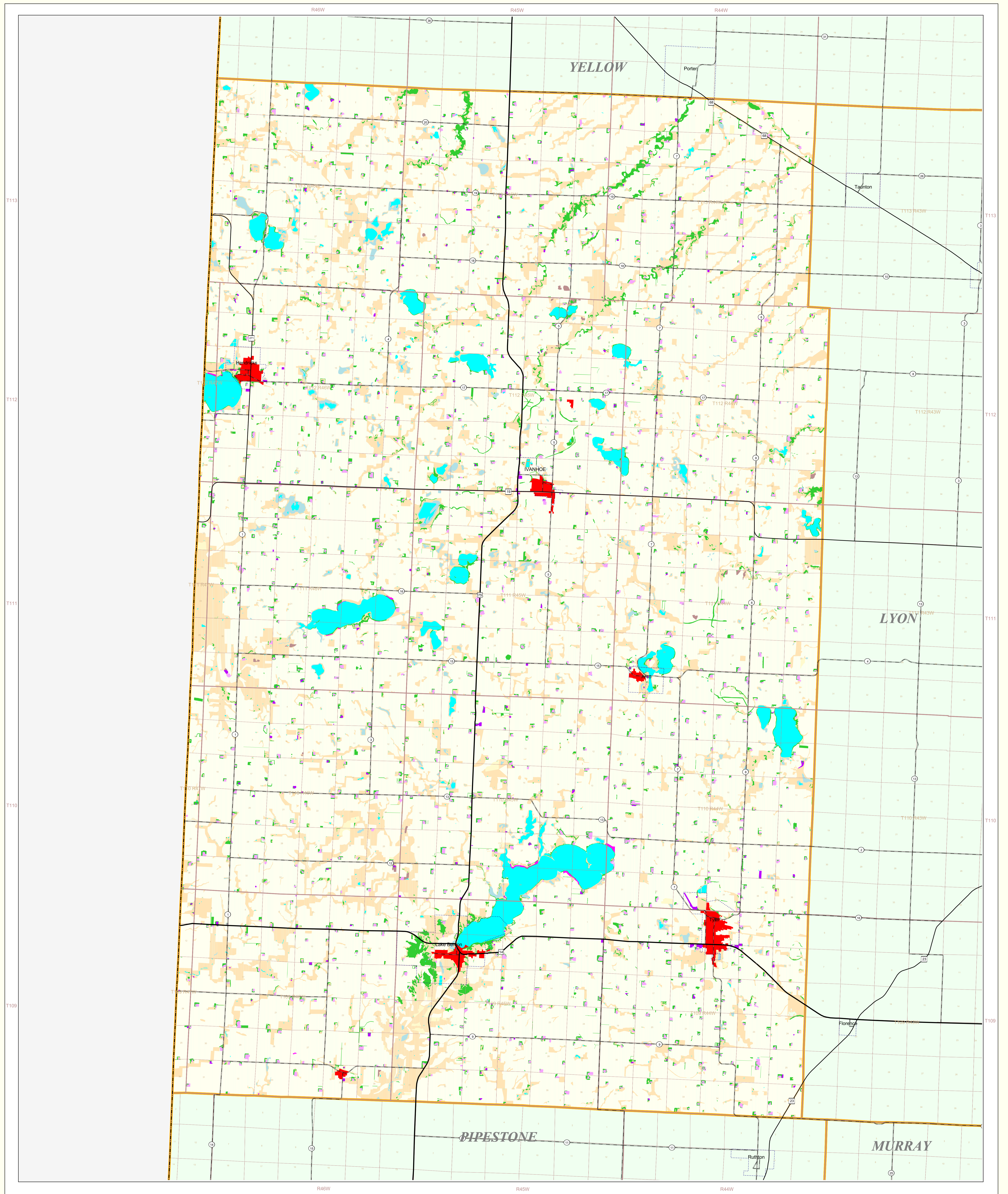


Lincoln County Land Use and Cover

State of Minnesota
1988 - 1990



MAP FEATURES

Land Use*

- Urban and Industrial
- Farmsteads and Rural Residences
- Rural Residential Development Complexes
- Other Rural Developments
- Cultivated Land
- Transitional Agricultural Land
- Grassland
- Grassland-Shrub-Tree Complex (Deciduous)
- Grassland-Shrub-Tree Complex (Coniferous)
- Deciduous Forest
- Coniferous Forest
- Water
- Wetlands
- Gravel Pits and Open Mines
- Bare Rock
- Exposed Soil, Sandbars, and Sand Dunes
- Unclassified/Unlabeled/Outside State or County

Cities*

- COUNTY SEAT
- Other Cities
- Municipal Boundary

Highways*

- Interstate Highway
- U.S. Trunk Highway
- State Trunk Highway
- County State-Aid Highway (CSAH)

Public Land Survey*

- State Boundary
- County Boundary
- Township & Range Section
- T34 Township
- R25W Range & Direction

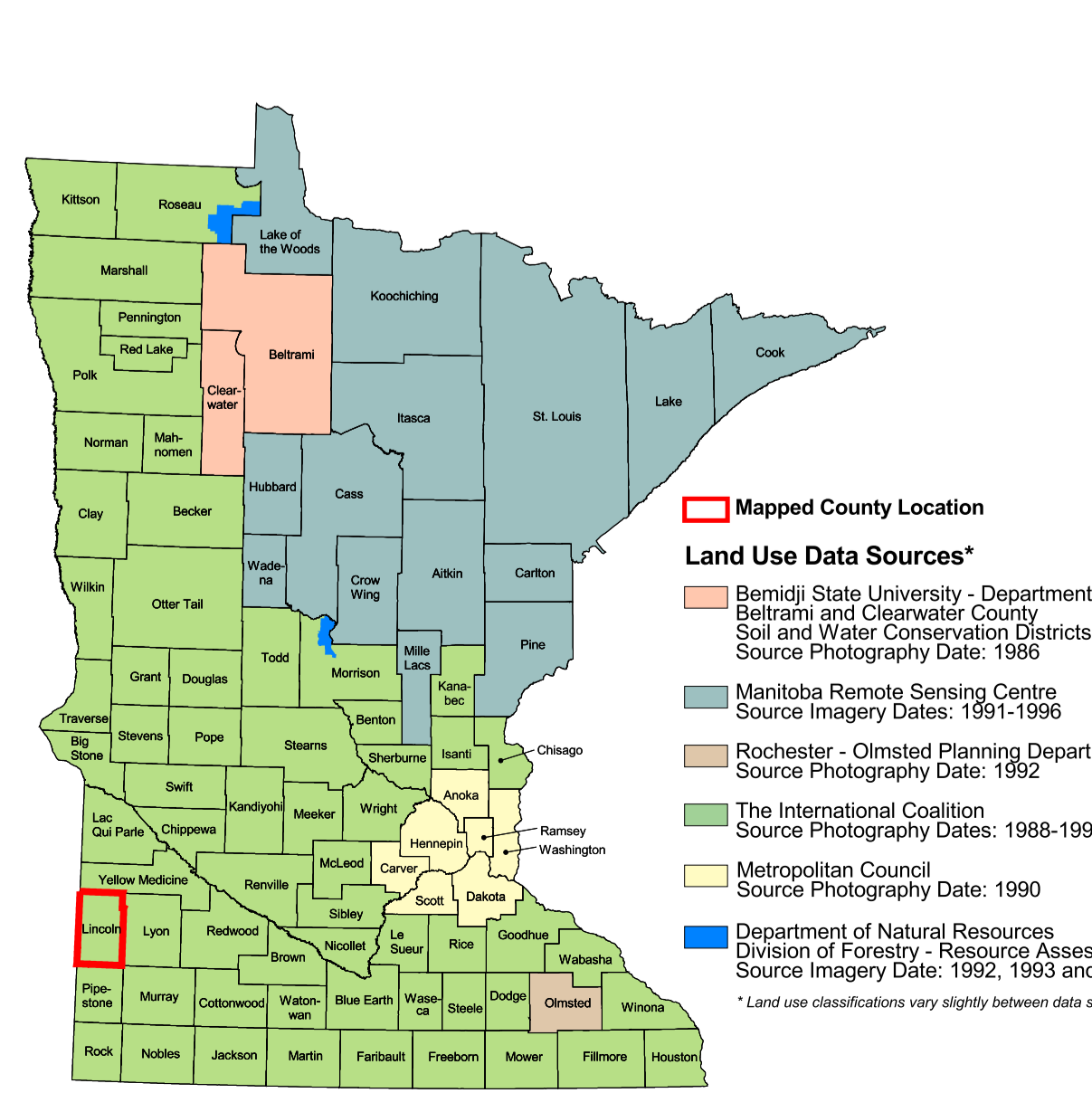
Data Sources

- The International Coalition
- Minnesota Department of Natural Resources
- Minnesota Department of Transportation
- Produced by the Minnesota Land Management Information Center (LMIC) 1988-1990
- Source: U.S. Department of Agriculture, Agricultural Stabilization and Conservation Service's (ASCS) low altitude, section-centered, 35mm color aerial photography taken during 1988-1990 and U.S. Fish and Wildlife Service National Wetlands Inventory (NWI) 1:24,000-scale field maps. Landsat satellite images (date unrecorded) were used to verify the classifications.

Lincoln County Land Use Statistics

Source: The Land Management Information Center (LMIC)

DESCRIPTION	ACRES	% ACRES
Urban and Industrial	1,101.9	0.4
Farmsteads and Rural Residences	4,174.2	1.7
Rural Residential Development Complexes	1,101.9	0.4
Other Rural Developments	228,282.3	95.1
Cultivated Land	49,326.3	19.7
Transitional Agricultural Land	2,282.3	0.9
Grassland	49,326.3	19.7
Grassland-Shrub-Tree Complex (Deciduous)	2,282.3	0.9
Grassland-Shrub-Tree Complex (Coniferous)	2,282.3	0.9
Deciduous Forest	1,101.9	0.4
Coniferous Forest	1,101.9	0.4
Water	1,101.9	0.4
Wetlands	1,101.9	0.4
Gravel Pits and Open Mines	1,101.9	0.4
Bare Rock	1,101.9	0.4
Exposed Soil	1,101.9	0.4
Unclassified/Unlabeled/Outside State or County	1,101.9	0.4
TOTAL	26,801	100%



ABOUT THIS MAP

Land Use Data Sources*

- Benetti State University - Department of Geography
- Beltrami and Clearwater County Soil and Water Conservation Districts
- Rochester - Olmsted Planning Department
- The International Coalition
- Department of Natural Resources
- Minnesota Department of Transportation

Data Sources: The land use / land cover categories displayed on this map were derived from sources that included the U. S. Department of Agriculture, Agricultural Stabilization and Conservation Service's (ASCS) low altitude, section-centered, 35mm color aerial photography taken during 1988-1990 and U.S. Fish and Wildlife Service National Wetlands Inventory (NWI) 1:24,000-scale field maps. Landsat satellite images (date unrecorded) were used to verify the classifications.

Data Interpretation and Computerization: The project was coordinated by The International Coalition for Land and Water Stewardship in the Red River Basin. Land use / land cover interpretation was performed by DPA International. The smallest area interpreted was approximately 2.5 acres.

Land use / land cover information was transcribed on to stable-base mylar registered to U.S. Geological Survey 1:24,000-scale topographic maps and then digitized by DPA International or Alexandria Technical College staff. Minnesota Department of Natural Resources MIS Bureau staff then joined the digitized files together to create county coverages.

On-line documentation: <http://lucy.lmic.state.mn.us/metadata/use89.html>

Credits and Acknowledgements

Data collection and interpretation supported by the Minnesota Future Resources Fund as recommended by the Legislative Commission on Minnesota Resources (LCMR).

The following groups also participated over an extended period:

- DPA International
- The International Coalition
- Minnesota Department of Natural Resources
- Minnesota Land Management Information Center
- North Dakota State University - Agricultural Engineering Department
- The Red River Management Board
- University of Minnesota - Department of Forest Resources
- University of North Dakota - Geography Department
- Wideth, Smith and Nelling

Map Projection: UTM, Extended Zone 15
Date: 10/93

Liability Statement
The Land Management Information Center (LMIC) does not warrant the results you may obtain by using this map. This map is provided "as is" without express or implied warranties, including warranties of merchantability and fitness. No one shall be liable for any consequential, incidental or special damages, including any lost profits or lost savings, even if a LMIC representative has been advised of the possibility of such damages or any other claim by any third party.

Distribution Information
This map was prepared in April, 1999. Both the map and the data used to create it are available from the Land Management Information Center at Minnesota Planning.

You may also view a generalized, interactive land use map of Minnesota, along with detailed information about land use data at:
<http://mapserver.lmic.state.mn.us/landuse>

For further assistance, or to order copies of this map, contact:
Land Management Information Center
608 Cedar Street
Centennial Building, Room 300
St. Paul, MN 55102
Phone: (651) 296-1211
Fax: (651) 296-1212
E-Mail: ceer@mnplanning.state.mn.us