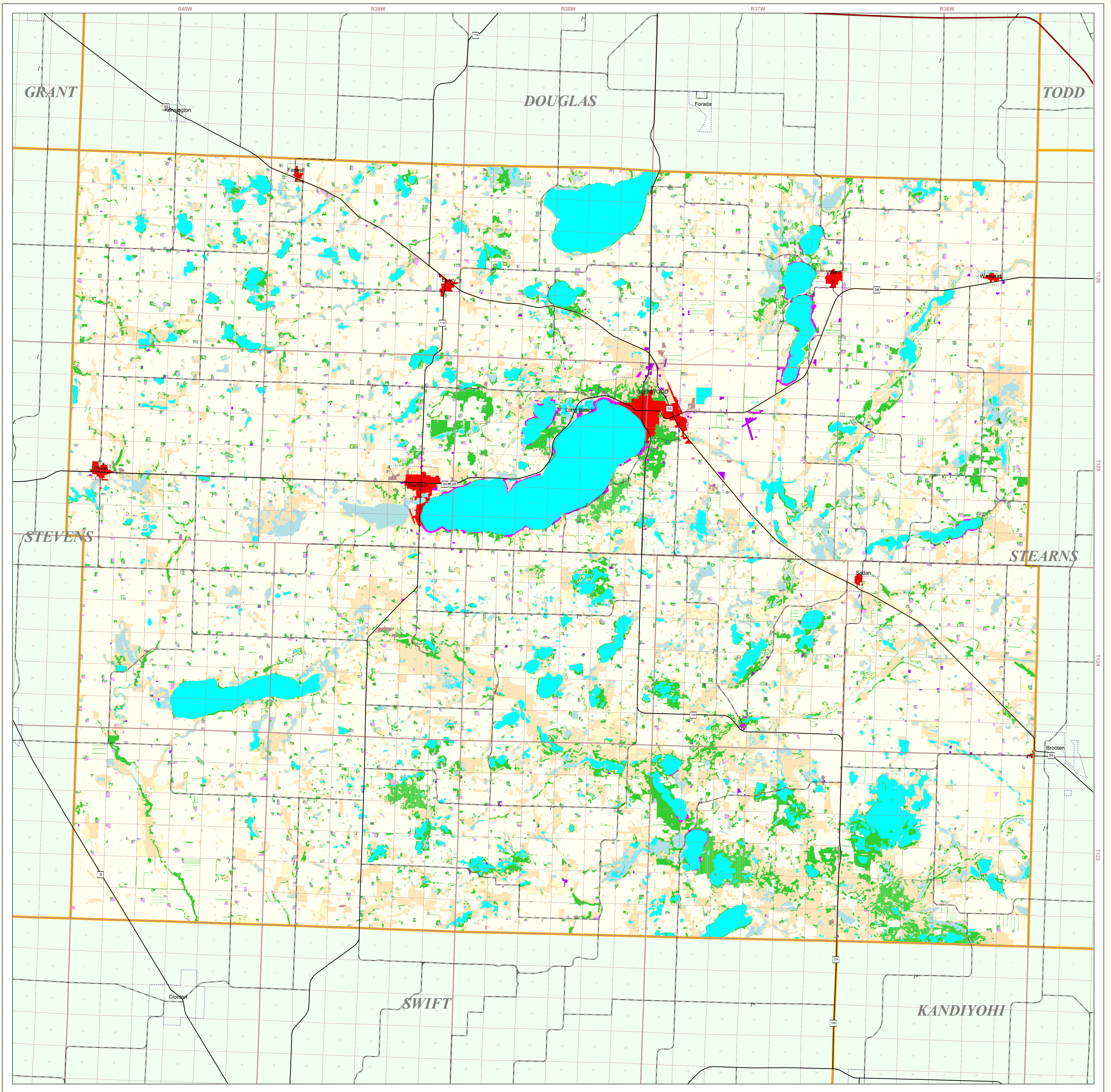


Pope County Land Use and Cover

State of Minnesota

1988 - 1990



MAP FEATURES

- Land Use¹**
 - Urban and Industrial
 - Farmsteads and Rural Residences
 - Rural Residential Development Complexes
 - Other Rural Developments
 - Cultivated Land
 - Transitional Agricultural Land
 - Grassland
 - Grassland-Shrub-Tree Complex (Deciduous)
 - Grassland-Shrub-Tree Complex (Coniferous)
 - Deciduous Forest
 - Coniferous Forest
 - Water
 - Wetlands
 - Gravel Pits and Open Mines
 - Bare Rock
 - Exposed Soil, Sandbars, and Sand Dunes
 - Unclassified/Unlabeled/Outside State or County
- CITIES²**
 - COUNTY SEAT
 - Other Cities
 - Municipal Boundary
- Highways³**
 - Interstate Highway
 - U.S. Trunk Highway
 - State Trunk Highway
 - County State-Aid Highway (CSAH)
- Public Land Survey⁴**
 - State Boundary
 - County Boundary
 - Township & Range
 - Section
 - T34 Township
 - R25W Range & Direction

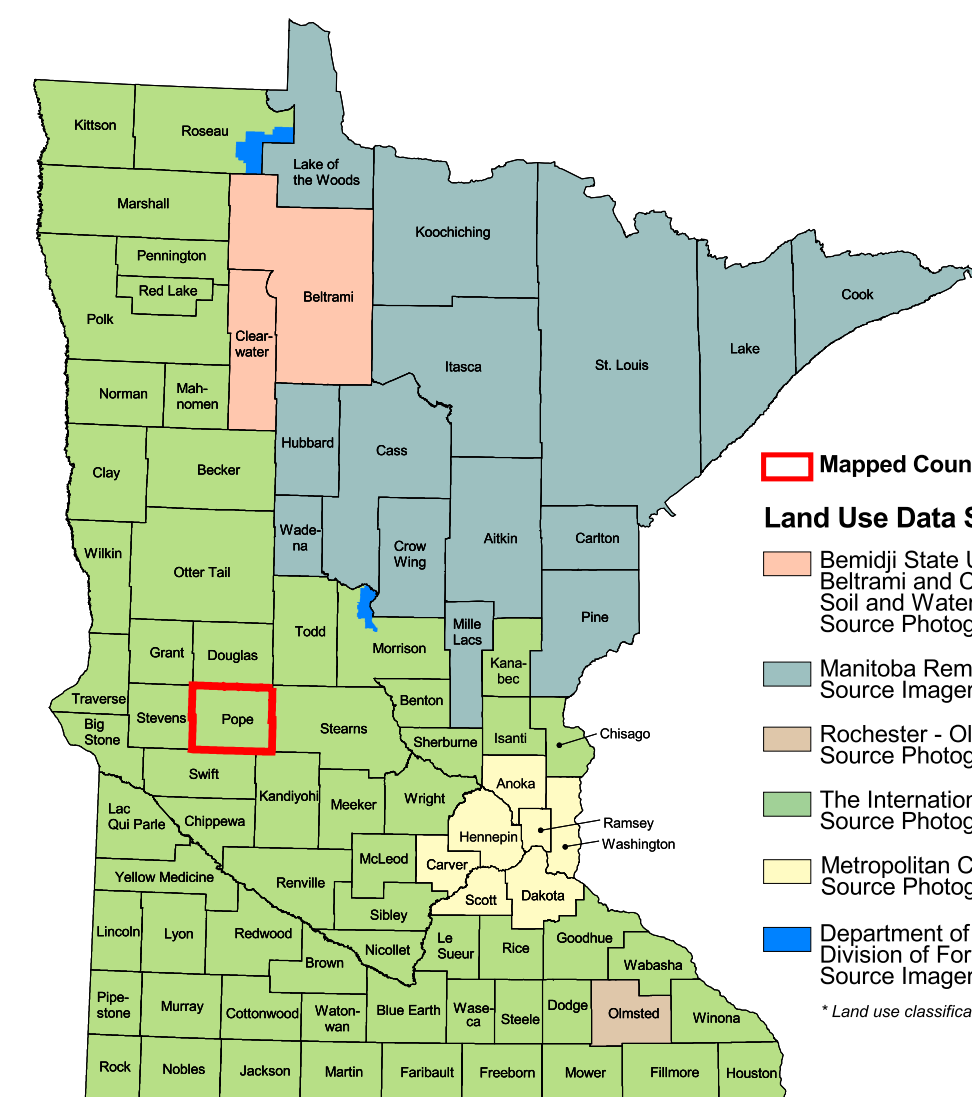
Pope County Land Use Statistics

Source: The Land Management Information Center (LMIC)

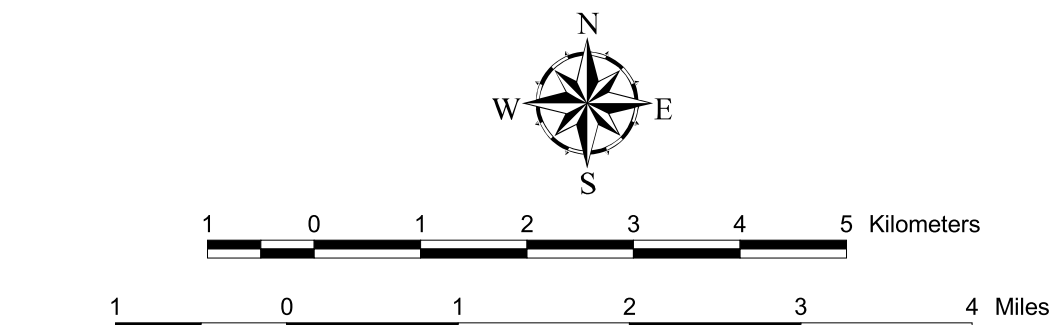
DESCRIPTION	ACRES	% ACRES
Urban and Industrial	4,559	0.14
Farmsteads and Rural Residences	4,695	0.15
Rural Residential Development Complexes	4,517	0.15
Other Rural Developments	725	0.02
Cultivated Land	283,014	9.24
Transitional Agricultural Land	15,600.9	0.5
Grassland	2,650.4	0.08
Grassland-Shrub-Tree Complex (Deciduous)	5,723.3	0.18
Grassland-Shrub-Tree Complex (Coniferous)	2,648.8	0.08
Deciduous Forest	3,338.9	0.11
Coniferous Forest	15,526.5	0.5
Water	2,800.2	0.09
Wetlands	1,926.5	0.06
Gravel Pits and Open Mines	200.2	<0.1
Bare Rock	17.0	<0.1
Exposed Soil	17.0	<0.1
Unclassified/Unlabeled/Outside State or Outside County	82,801	2.66
TOTAL	32,801	100%

Data Sources

- 1 The International Geosphere and Biosphere Programme, 1988-1990
- 2 USGS, 1:100,000 scale, 30' x 30' quadrangle maps published between 1977 and 1988
- 3 Minnesota Department of Transportation, 1997-98
- 4 Produced by the Minnesota Land Management Information Center from U.S. Geological Survey GIS data, 1:100,000 scale, 30' x 30' quadrangle maps published between 1977 and 1988



- Land Use Data Sources⁵**
 - Benji's State University - Department of Geography, Beltrami and Clearwater County Soil and Water Conservation Districts, Source Imagery Date: 1986
 - Manitoba Remote Sensing Centre, Source Imagery Dates: 1981-1986
 - Rochester - Olmsted Planning Department, Source Imagery Date: 1992
 - The International Geosphere and Biosphere Programme, Source Imagery Dates: 1988-1990
 - Metropolitan Council, Source Imagery Date: 1990
 - Department of Natural Resources, Division of Forestry - Resource Assessment, Source Imagery Date: 1992, 1993 and 1998
- ⁵ Land use classifications vary slightly between data sources.



ABOUT THIS MAP

Data Sources: The land use / land cover categories displayed on this map were derived from sources that included the U.S. Department of Agriculture, Agricultural Stabilization and Conservation Service's (ASCS) low altitude, section-centered, 35mm color aerial photography taken during 1988-1990 and U.S. Fish and Wildlife Service National Wetlands Inventory (NWI) 1:24,000-scale field maps. Land use / land cover data were derived from the NWI and the NWI data were used to verify the classifications.

Data Interpretation and Computerization: The project was coordinated by The International Geosphere and Biosphere Programme in the Red River Basin. Land use / land cover interpretation was performed by DPA International. The smallest area interpreted was approximately 2.5 acres.

Land use / land cover information was transcribed on to stable-base mylar registered to U.S. Geological Survey 1:24,000-scale topographic maps and then digitized by DPA International or Alexandria Technical College staff. Minnesota Department of Natural Resources MIS Bureau staff then joined the digitized files together to create county coverages.

On-line documentation: <http://lucy.lmic.state.mn.us/metadata/usa89.html>

Credits and Acknowledgements

Data collection and interpretation supported by the Minnesota Future Resources Fund as recommended by the Legislative Commission on Minnesota Resources (LCMR).

The following groups also participated over an extended period:

- Alexandria Technical College - GIS Program
- DPA International
- The International Geosphere and Biosphere Programme
- Minnesota Board of Water and Soil Resources
- Minnesota Department of Natural Resources
- Minnesota Land Management Information Center
- North Dakota State University - Agricultural Engineering Department
- The Red River Management Board
- University of Minnesota - Department of Forest Resources
- University of North Dakota - Geography Department
- Wildern, Smith and Nelling

Map Projection: UTM, Extended Zone 15
Datum: NAD83

Liability Statement

The Land Management Information Center (LMIC) does not warrant the results you may obtain by using this map. This map is provided "as is" without express or implied warranties, including warranties of merchantability and fitness. In no event will LMIC be liable for any consequential, incidental or special damages, including any lost profits or lost savings, even if a LMIC representative has been advised of the possibility of such damages or any other claim by any third party.

Distribution Information

This map was prepared in April, 1999. Both the map and the data used to create it are available from the Land Management Information Center at Minnesota Planning.

You may also view a generalized, interactive land use map of Minnesota, along with detailed information about land use data at:

<http://mapserver.lmic.state.mn.us/landuse>

For further assistance, or to order copies of this map, contact:

Land Management Information Center
658 Cedar Street
Centennial Building, Room 330
St. Paul, MN 55155

Phone: (651) 296-1211
FAX: (651) 296-1212
E-Mail: clearinghouse@mplanning.state.mn.us

