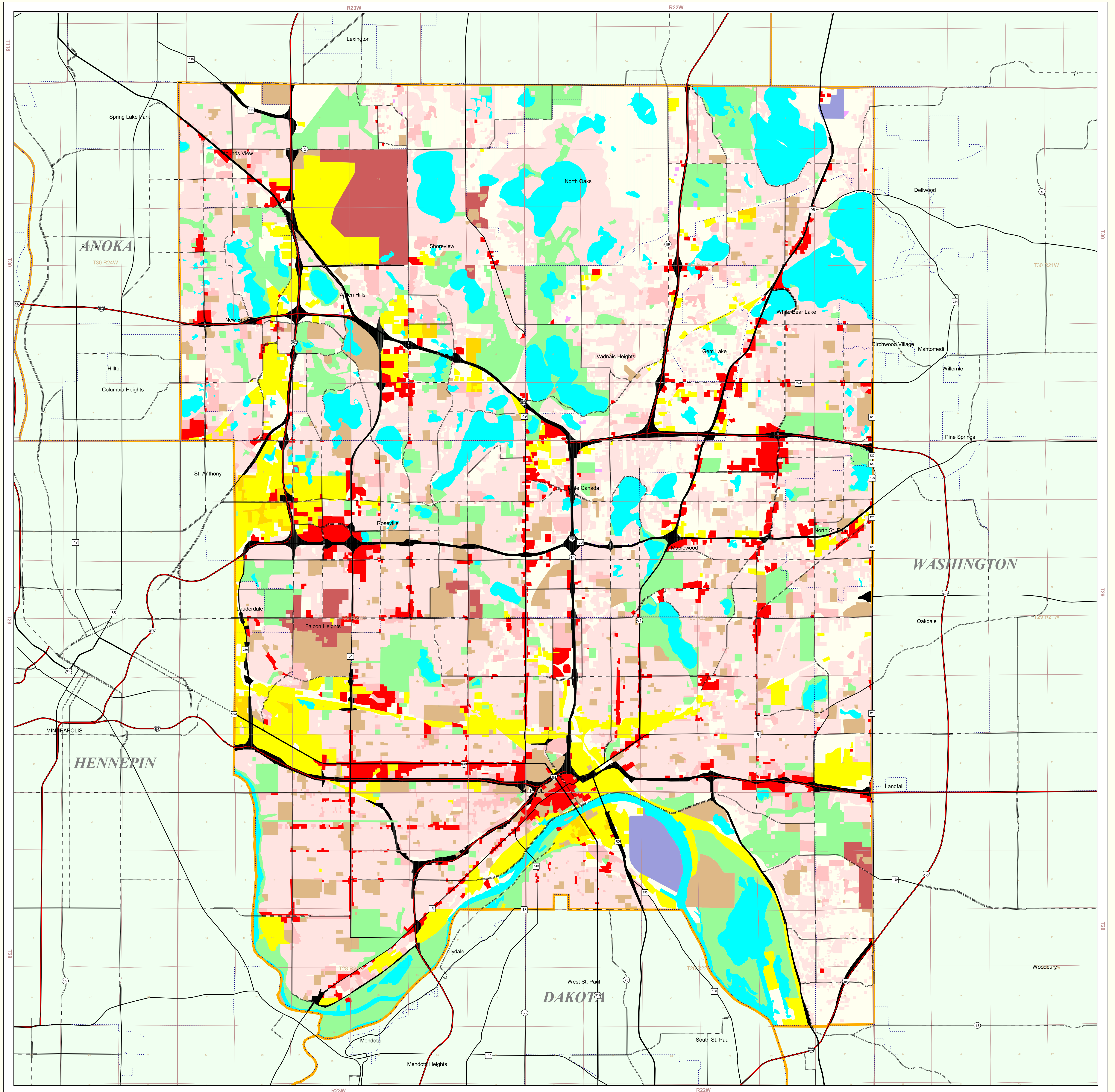


Ramsey County Land Use and Cover

State of Minnesota

1990

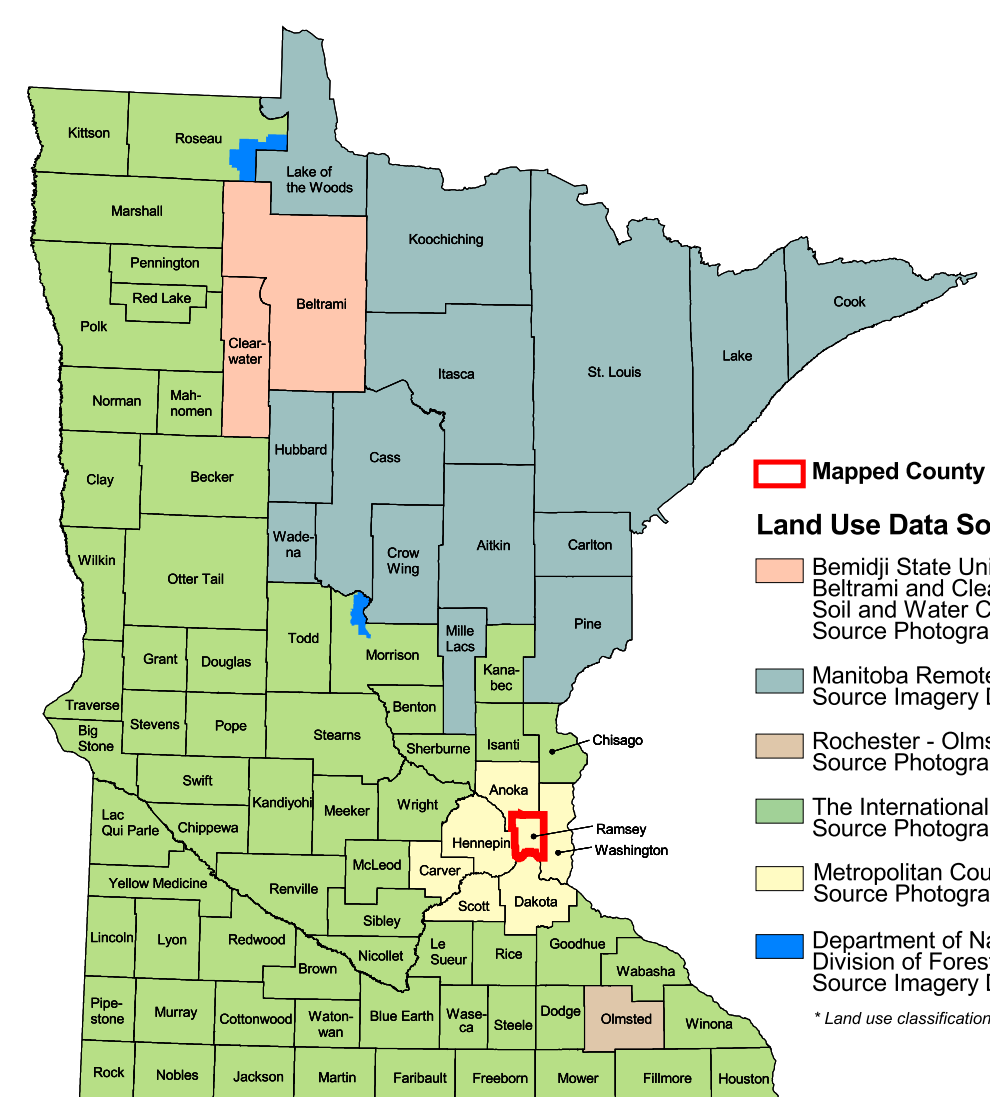


- #### MAP FEATURES
- Land Use**
 - Single Family Residential
 - Multi-Family Residential
 - Farmsteads
 - Commercial
 - Industrial
 - Industrial Parks not Developed
 - Vacant/Agricultural
 - Parks & Recreation Areas
 - Open Water Bodies
 - Public-Semi Public
 - Public & Semi-Public Vacant
 - Airports
 - Cities**
 - COUNTY SEAT
 - Other Cities
 - Highways**
 - Interstate Highway
 - U.S. Trunk Highway
 - State Trunk Highway
 - County State-Aid Highway (CSAH)
 - Public Land Survey**
 - State Boundary
 - County Boundary
 - Township & Range
 - Section
 - Other**
 - Municipal Boundary
 - T34 Township
 - R25W Range & Direction
 - Major Four Lane Highways

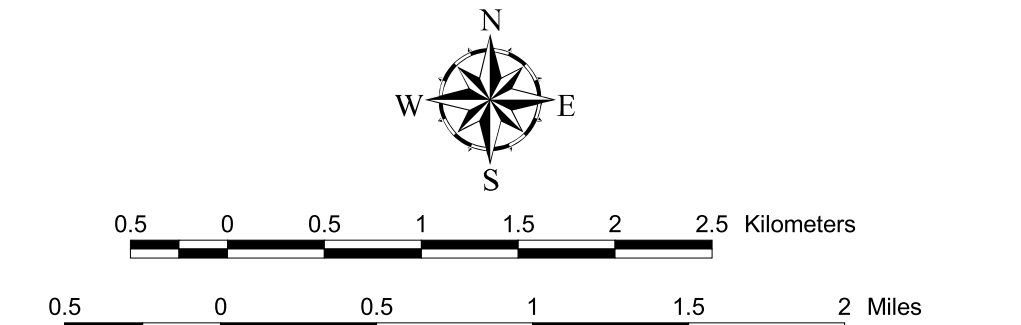
Ramsey County Land Use Statistics

Source: The Land Management Information Center (LMIC)

DESCRIPTION	ACRES	% ACRES
Single Family Residential	42637.9	37.4
Multi-Family Residential	3854.5	3.5
Farmsteads	32.2	<0.1
Commercial	4368.2	4
Industrial	7900.9	7.3
Industrial Parks not Developed	397.4	0.4
Vacant/Agricultural	16233.7	16.8
Parks & Recreation Areas	11442.9	10.3
Open Water Bodies	9787	9
Public-Semi Public	6008.9	5.5
Public & Semi-Public Vacant	2059.4	1.9
Airports	647.2	0.6
Major Four Lane Highways	16713.3	15
TOTAL	113,692	100%



- #### Land Use Data Sources
- 1. Bemis State University - Department of Geography, Beltrami and Clearwater County Soil and Water Conservation Districts. Source Imagery Dates: 1986
 - 2. Manitoba Remote Sensing Centre. Source Imagery Dates: 1991-1998
 - 3. Rochester - Olmsted Planning Department. Source Imagery Date: 1992
 - 4. The International Coalition. Source Imagery Dates: 1988-1990
 - 5. Metropolitan Council. Source Imagery Date: 1990
 - 6. Department of Natural Resources, Division of Forestry - Wetland Assessment. Source Imagery Dates: 1992, 1993 and 1996
- *Land use classifications vary slightly between data sources.



ABOUT THIS MAP

Data Sources: The land use / land cover categories displayed on this map were derived from rectified air photos (1:38,400) taken on May 4 or May 5, 1990. Reverse directories, non-residential building permits and field checks were used when a land use could not be determined from the photos.

Data Interpretation and Computerization: First, air photos were rectified by Markhurd to match a photo grid used by the Metropolitan Council. Corner ticks of the air photo grid and the Minnesota Department of Transportation's digital road centerline layer (1:24,000) were used to register the photos. The photos were then interpreted by Metropolitan Council staff. Next, myriads of 1980 and 1984 land use (1:9,600) were overlain on the photos and changes were delineated. Corrections to the earlier data sets that had been submitted by cities and townships were also incorporated. Reverse directories, non-residential building permits and field checks were used when land use could not be determined from the photos. The updated myriads were digitized in a vector format as 251 individual files. The files were then edge-matched and registration corrections made using the road centerlines.

The land use / land cover data was compiled to meet National Map Accuracy Standards at the 1:24,000 scale (within approximately 16.5 meters of actual location), although some instances show offsets as large as 70 meters.

On-line documentation: <http://lucy.lmic.state.mn.us/metadata/luc90.html>

Credits and Acknowledgements

Seven-county metropolitan land use data provided by: Metropolitan Council

Liability Statement
The Land Management Information Center (LMIC) does not warrant the results you may obtain by using this map. This map is provided "as is" without express or implied warranties, including warranties of merchantability and fitness. In no event will LMIC be liable for any consequential, incidental or special damages, including any lost profits or lost savings, even if a LMIC representative has been advised of the possibility of such damages or any other claim by any third party.

Map Projection: UTM, Extended Zone 15
Datum: NAD83

Distribution Information
This map was prepared in April, 1999. Both the map and the data used to create it are available from the Land Management Information Center at Minnesota Planning.
You may also view a generalized, interactive land use map of Minnesota, along with detailed information about land use data at:
<http://mapserver.lmic.state.mn.us/landuse>

For further assistance, or to order copies of this map, contact:
Land Management Information Center
658 Cedar Street
Centennial Building, Room 330
St. Paul, MN 55155
Phone: (651) 296-1211
FAX: (651) 296-1212
E-Mail: clearinghouse@mnplanning.state.mn.us



1. Generalized Land Use for the Twin Cities Metropolitan Area, Metropolitan Council, 1990.
2. 1992 Census of Population, U.S. Bureau of the Census, 1995.
3. Minnesota Department of Transportation, 1997-98.
4. Produced by the Minnesota Land Management Information Center from U.S. Geological Survey (USGS), 1:50,000 scale, 30'x30' quadrangle maps published between 1977 and 1996.