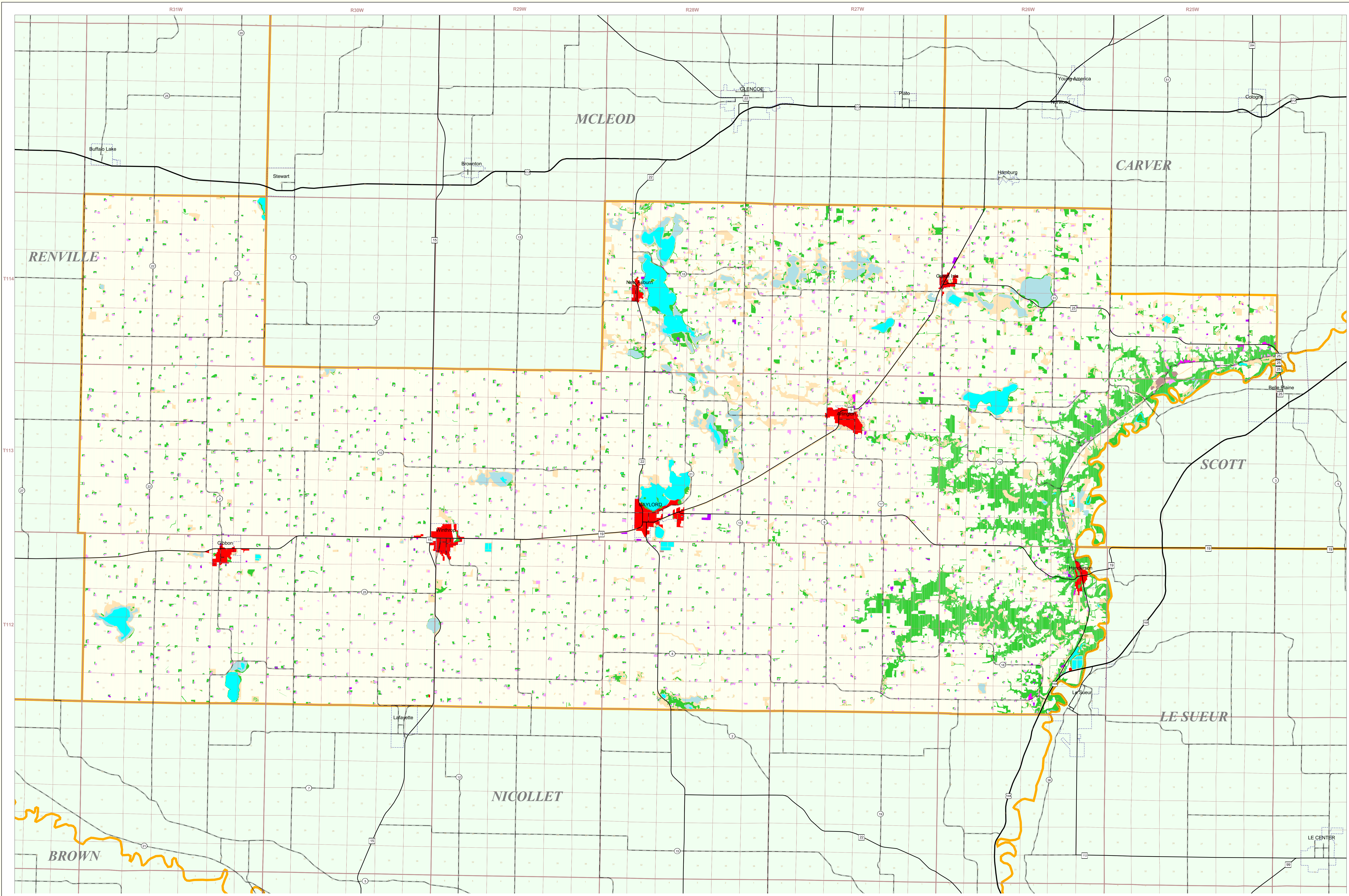


# Sibley County Land Use and Cover

State of Minnesota

1988 - 1990



### MAP FEATURES

<b>Land Use*</b>	<b>Cities†</b>
Urban and Industrial	COUNTY SEAT
Farmsteads and Rural Residences	Other Cities
Rural Residential Development Complexes	..... Municipal Boundary
Other Rural Developments	<b>Highways*</b>
Cultivated Land	Interstate Highway
Transitional Agricultural Land	U.S. Trunk Highway
Grassland	State Trunk Highway
Grassland-Shrub-Tree Complex (Deciduous)	County State-Aid Highway (CSAH)
Grassland-Shrub-Tree Complex (Coniferous)	
Deciduous Forest	<b>Public Land Survey*</b>
Coniferous Forest	State Boundary
Water	County Boundary
Wetlands	Township & Range
Gravel Pits and Open Mines	Section
Bare Rock	T34 Township
Exposed Soil, Sandbars, and Sand Dunes	R25W Range & Direction
Unclassified/Unlabeled Outside State or County	

**Data Sources**

- \* The International Geostationary Earth Observation Satellite (IGEOSS) Source Photography Dates: 1988-1990
- † Municipal Census Data, U.S. Bureau of the Census, 1995
- ‡ Minnesota Department of Transportation, 2007/08
- § Minnesota State University - Department of Geography, Department of Geology and Earth Science, Department of Soil and Water Conservation Districts Source Imagery Dates: 1991-1999
- ¶ Manitoba Remote Sensing Centre Source Imagery Dates: 1991-1999
- ‡† Rochester - Olmsted Planning Department Source Imagery Dates: 1992
- ‡ The International Coalition Source Photography Dates: 1988-1990
- ‡ Metropolitan Council Source Photography Date: 1990
- ‡ Department of Natural Resources Division of Forestry - Resource Assessment Source Imagery Dates: 1992, 1993 and 1996

### Sibley County Land Use Statistics

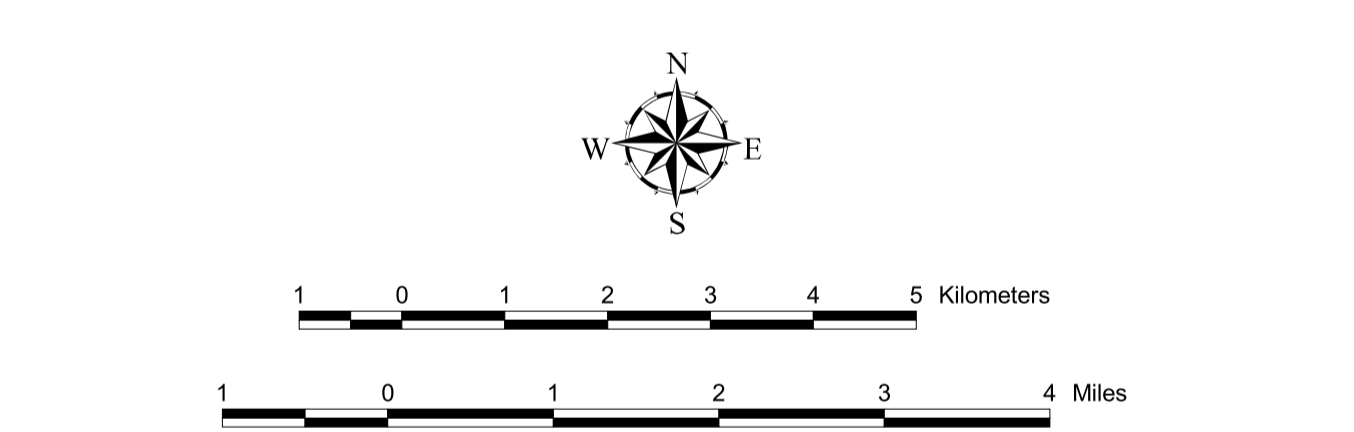
Source: The Land Management Information Center (LMIC)

DESCRIPTION	ACRES	% ACRES
Urban and Industrial	2,000	6.2
Farmsteads and Rural Residences	10,000	31.2
Rural Residential Development Complexes	10,000	31.2
Other Rural Developments	10,000	31.2
Cultivated Land	10,000	31.2
Transitional Agricultural Land	10,000	31.2
Grassland	10,000	31.2
Grassland-Shrub-Tree Complex (Deciduous)	10,000	31.2
Grassland-Shrub-Tree Complex (Coniferous)	10,000	31.2
Deciduous Forest	10,000	31.2
Coniferous Forest	10,000	31.2
Water	10,000	31.2
Wetlands	10,000	31.2
Gravel Pits and Open Mines	10,000	31.2
Bare Rock	10,000	31.2
Exposed Soil, Sandbars, and Sand Dunes	10,000	31.2
Unclassified/Unlabeled Outside State or County	10,000	31.2
<b>TOTAL</b>	<b>32,319</b>	<b>100%</b>

### Land Use Data Sources\*

- Bemidji State University - Department of Geography
- Betham and Clearwater County Soil and Water Conservation Districts Source Photography Date: 1988
- Manitoba Remote Sensing Centre Source Imagery Dates: 1991-1999
- Rochester - Olmsted Planning Department Source Imagery Dates: 1992
- The International Coalition Source Photography Dates: 1988-1990
- Metropolitan Council Source Photography Date: 1990
- Department of Natural Resources Division of Forestry - Resource Assessment Source Imagery Dates: 1992, 1993 and 1996

\*Land use classifications vary slightly between data sources.



### ABOUT THIS MAP

**Data Sources:** The land use / land cover categories displayed on this map were derived from sources that included the U. S. Department of Agriculture, Agricultural Stabilization and Conservation Service's (ASCS) low altitude, section-centered, 35mm color aerial photography taken during 1988-1990 and U.S. Fish and Wildlife Service National Wetlands Inventory (NWI) 1:24,000-scale field maps. Landsat satellite images (date unrecorded) were used to verify the classifications.

**Data Interpretation and Computerization:** The project was coordinated by the International Coalition for Land and Water Stewardship in the Red River Basin. Land use / land cover interpretation was performed by DPA International. The smallest area interpreted was approximately 2.5 acres.

Land use / land cover information was transcribed on to stable-base mylars registered to U.S. Geological Survey 1:24,000-scale topographic maps and then digitized by DPA International or Alexandria Technical College staff. Minnesota Department of Natural Resources MIS Bureau staff then joined the digitized files together to create county coverages.

**On-line documentation:** <http://lucy.lmic.state.mn.us/mtdata/luse89.html>

### Credits and Acknowledgements

Data collection and interpretation supported by the Minnesota Future Resources Fund as recommended by the Legislative Commission on Minnesota Resources (LCMR).

The following groups also participated over an extended period:

- Alexandria Technical College - GIS Program
- DPA International
- The International Coalition
- Minnesota Board of Water and Soil Resources
- Minnesota Department of Natural Resources
- Minnesota Land Management Information Center
- North Dakota State University - Agricultural Engineering Department
- The Red River Management Board
- University of Minnesota - Department of Forest Resources
- University of North Dakota - Geography Department
- Wiseth, Smith and Nollig

Map Projection: UTM, Extended Zone 15  
Datum: NAD83

**Liability Statement**  
The Land Management Information Center (LMIC) does not warrant the results you may obtain by using this map. This map is provided as is without express or implied warranties, including warranties of merchantability and fitness. In no event will LMIC be liable for any consequential, incidental or special damages, including any lost profits or lost savings, even if a LMIC representative has been advised of the possibility of such damages or any other claim by any third party.

**For further assistance, or to order copies of this map, contact:**  
Land Management Information Center  
658 Cedar Street  
Centennial Building, Room 330  
St. Paul, MN 55155  
Phone: (651) 296-1211  
FAX: (651) 296-1212  
email: [clearinghouse@mnplan.state.mn.us](mailto:clearinghouse@mnplan.state.mn.us)

**Distribution Information**  
This map was prepared in April, 1999. Both the map and the data used to create it are available from the Land Management Information Center at Minnesota Planning.  
You may also view a generalized, interactive land use map of Minnesota, along with detailed information about land use data at:  
<http://mapserver.lmic.state.mn.us/landuse>

