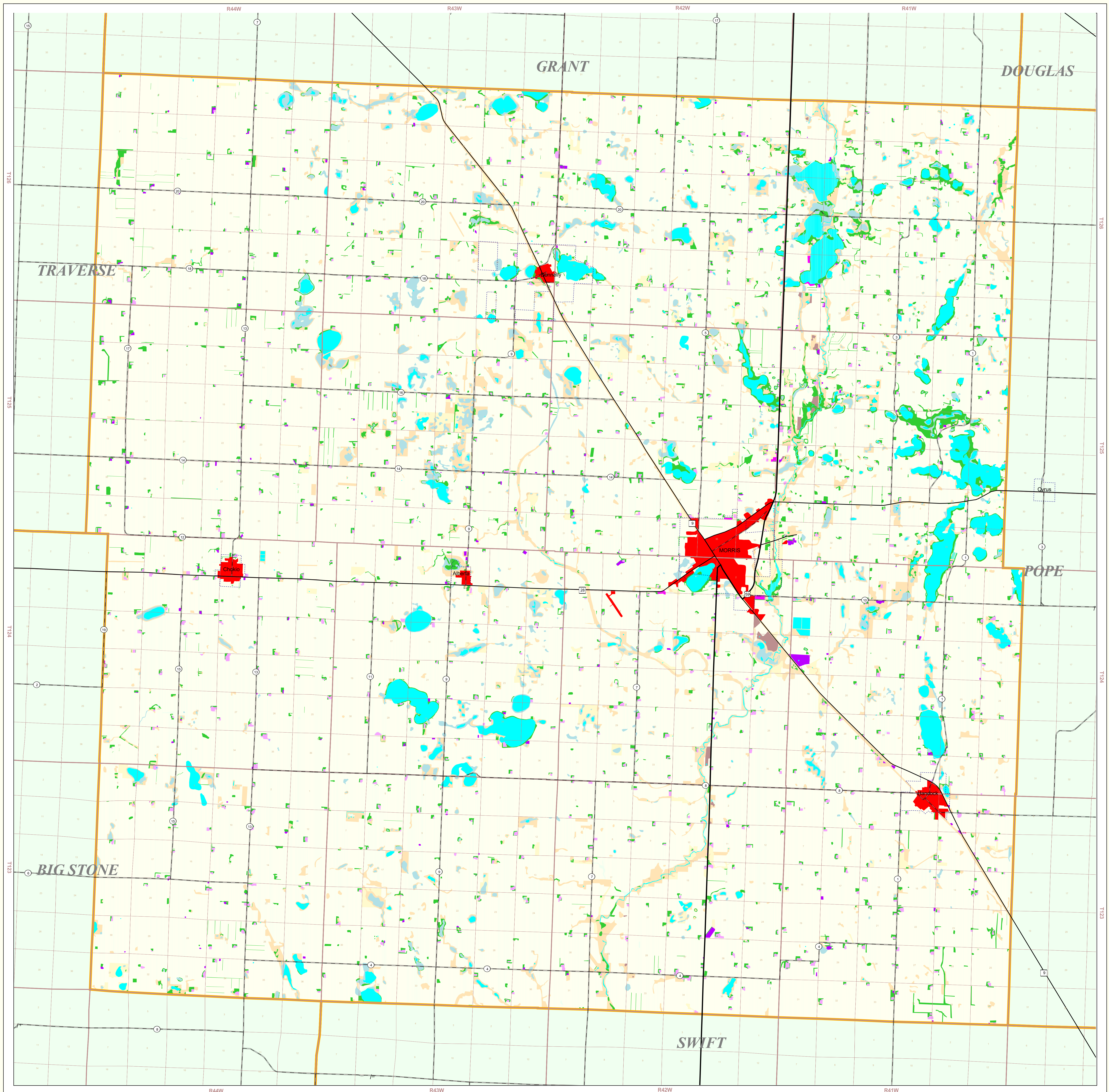


# Stevens County Land Use and Cover

State of Minnesota  
1988 - 1990



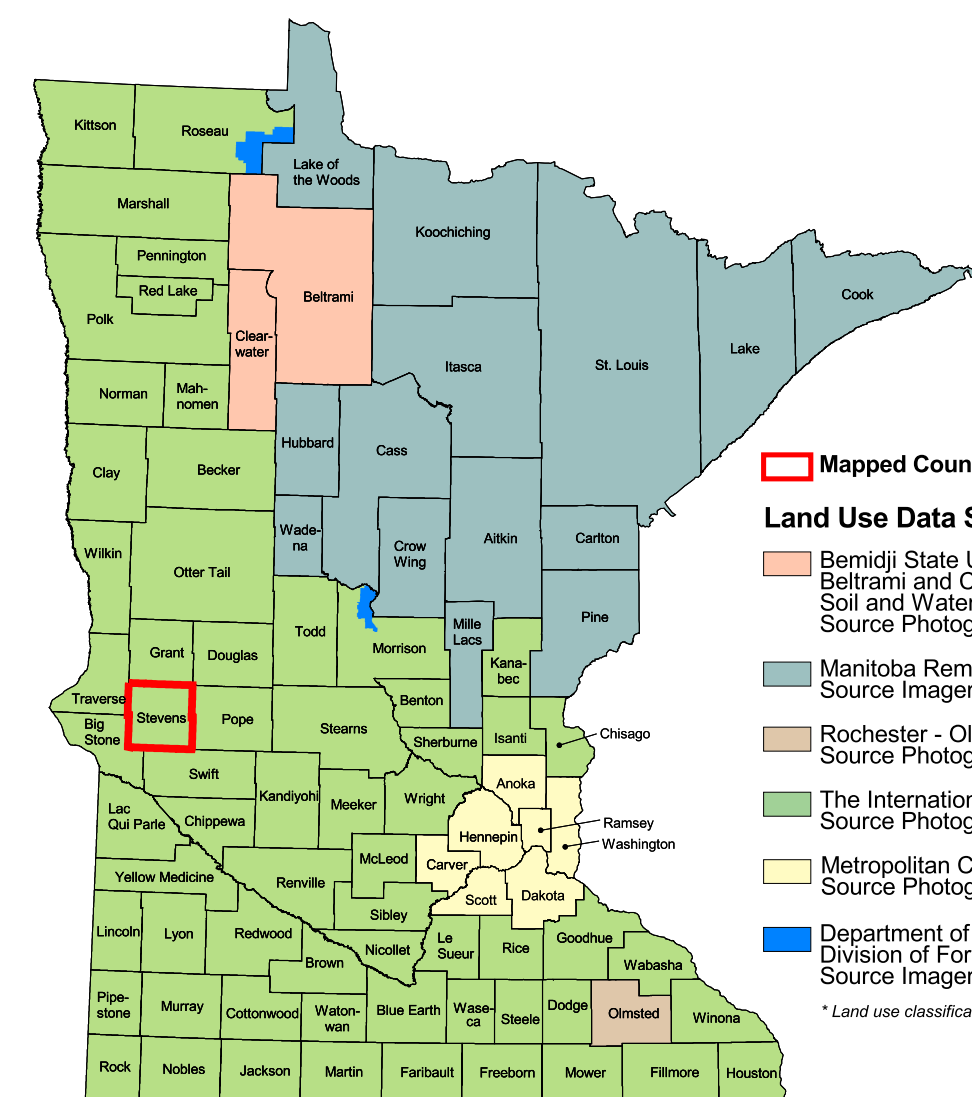
## MAP FEATURES

- Land Use\***
  - Urban and Industrial
  - Farmsteads and Rural Residences
  - Other Rural Developments
  - Cultivated Land
  - Grassland
  - Grassland-Shrub-Tree Complex (Deciduous)
  - Grassland-Shrub-Tree Complex (Coniferous)
  - Deciduous Forest
  - Coniferous Forest
  - Water
  - Wetlands
  - Gravel Pits and Open Mines
  - Bare Rock
  - Exposed Soil, Sandbars, and Sand Dunes
  - Unclassified/Unlabeled/Outside State or County
- CITIES\***
  - COUNTY SEAT
  - Other Cities
  - Municipal Boundary
- Highways\***
  - Interstate Highway
  - U.S. Trunk Highway
  - State Trunk Highway
  - County State-Aid Highway (CSAH)
- Public Land Survey\***
  - State Boundary
  - County Boundary
  - Township & Range
  - Section
  - T34 Township
  - R25W Range & Direction

## Stevens County Land Use Statistics

Source: The Land Management Information Center (LMIC)

DESCRIPTION	ACRES	% ACRES
Urban and Industrial	2,274.4	0.8
Farmsteads and Rural Residences	2,079.4	0.8
Other Rural Developments	41.7	0.0
Cultivated Land	31,947.4	12.4
Grassland	15,366.9	5.7
Grassland-Shrub-Tree Complex (Deciduous)	15,690.4	5.8
Grassland-Shrub-Tree Complex (Coniferous)	477.1	0.2
Deciduous Forest	6,752.5	2.4
Coniferous Forest	10,010.2	3.6
Water	19,520.2	7.1
Wetlands	2,258.2	0.8
Gravel Pits and Open Mines	0	0
Bare Rock	0	0
Exposed Soil, Sandbars, and Sand Dunes	0	0
Unclassified/Unlabeled/Outside State or Outside County	0	0
<b>TOTAL</b>	<b>26,882</b>	<b>100%</b>



- Land Use Data Sources\***
  - Benjamins State University - Department of Geography, Beltrami and Clearwater County Soil and Water Conservation Districts Source Imagery Date: 1988
  - The International Condition Source Imagery Date: 1992
  - Rochester - Olmsted Planning Department Source Imagery Date: 1992
  - Metropolitan Council Source Imagery Date: 1990
  - Department of Natural Resources Division of Forestry - Resources Assessment Source Imagery Date: 1992, 1993 and 1998
- Map Projection:** UTM, Extended Zone 15 Datum: NAD83

**ABOUT THIS MAP**

**Data Sources:** The land use / land cover categories displayed on this map were derived from sources that included the U. S. Department of Agriculture, Agricultural Stabilization and Conservation Service's (ASCS) low altitude, section-centered, 35mm color aerial photography taken during 1988-1990 and U. S. Fish and Wildlife Service National Wetlands Inventory (NWI) 1:24,000-scale field maps. LandSat satellite images (date unrecorded) were used to verify the classifications.

**Data Interpretation and Computerization:** The project was coordinated by The International Condition for Land and Water Stewardship in the Red River Basin. Land use / land cover interpretation was performed by DPA International. The smallest area interpreted was approximately 2.5 acres.

**Land use / land cover information was transcribed on to stable-base mylars registered to U. S. Geological Survey 1:24,000-scale topographic maps and then digitized by DPA International or Alexandria Technical College staff. Minnesota Department of Natural Resources MIS Bureau staff then joined the digitized files together to create county coverages.**

**On-line documentation:** <http://lucy.lmic.state.mn.us/metadata/luc89.html>

**Credits and Acknowledgements**  
Data collection and interpretation supported by the Minnesota Future Resources Funds as recommended by the Legislative Commission on Minnesota Resources (LCMR).

**The following groups also participated over an extended period:**  
Alexandria Technical College - GIS Program  
DPA International  
The International Condition  
Minnesota Board of Water and Soil Resources  
Minnesota Department of Natural Resources  
Minnesota Land Management Information Center  
North Dakota State University - Agricultural Engineering Department  
The Red River Management Board  
University of Minnesota - Department of Forest Resources  
University of North Dakota - Geography Department  
Wetland, Smith and Nelling

**Liability Statement**  
The Land Management Information Center (LMIC) does not warrant the results you may obtain by using this map. This map is provided "as is" without express or implied warranties, including warranties of merchantability and fitness. In no event will LMIC be liable for any consequential, incidental or special damages, including any lost profits or lost savings, even if a LMIC representative has been advised of the possibility of such damages or any other claim by any third party.

**Distribution Information**  
This map was prepared in April, 1999. Both the map and the data used to create it are available from the Land Management Information Center at Minnesota Planning.

You may also view a generalized, interactive land use map of Minnesota, along with detailed information about land use data at:  
<http://mapserver.lmic.state.mn.us/landuse>

**For further assistance, or to order copies of this map, contact:**  
Land Management Information Center  
658 Cedar Street  
Central Building, Room 330  
St. Paul, MN 55155  
Phone: (651) 296-1211  
FAX: (651) 296-1212  
E-Mail: [clearinghouse@mpl.state.mn.us](mailto:clearinghouse@mpl.state.mn.us)

**Data Sources**  
1 The International Condition Source Imagery Dates: 1988-1990  
2 USGS 1:24,000 Scale, 35mm Color Aerial Photography Imagery Dates: 1988-1990  
3 Minnesota Department of Transportation, 1997-98

