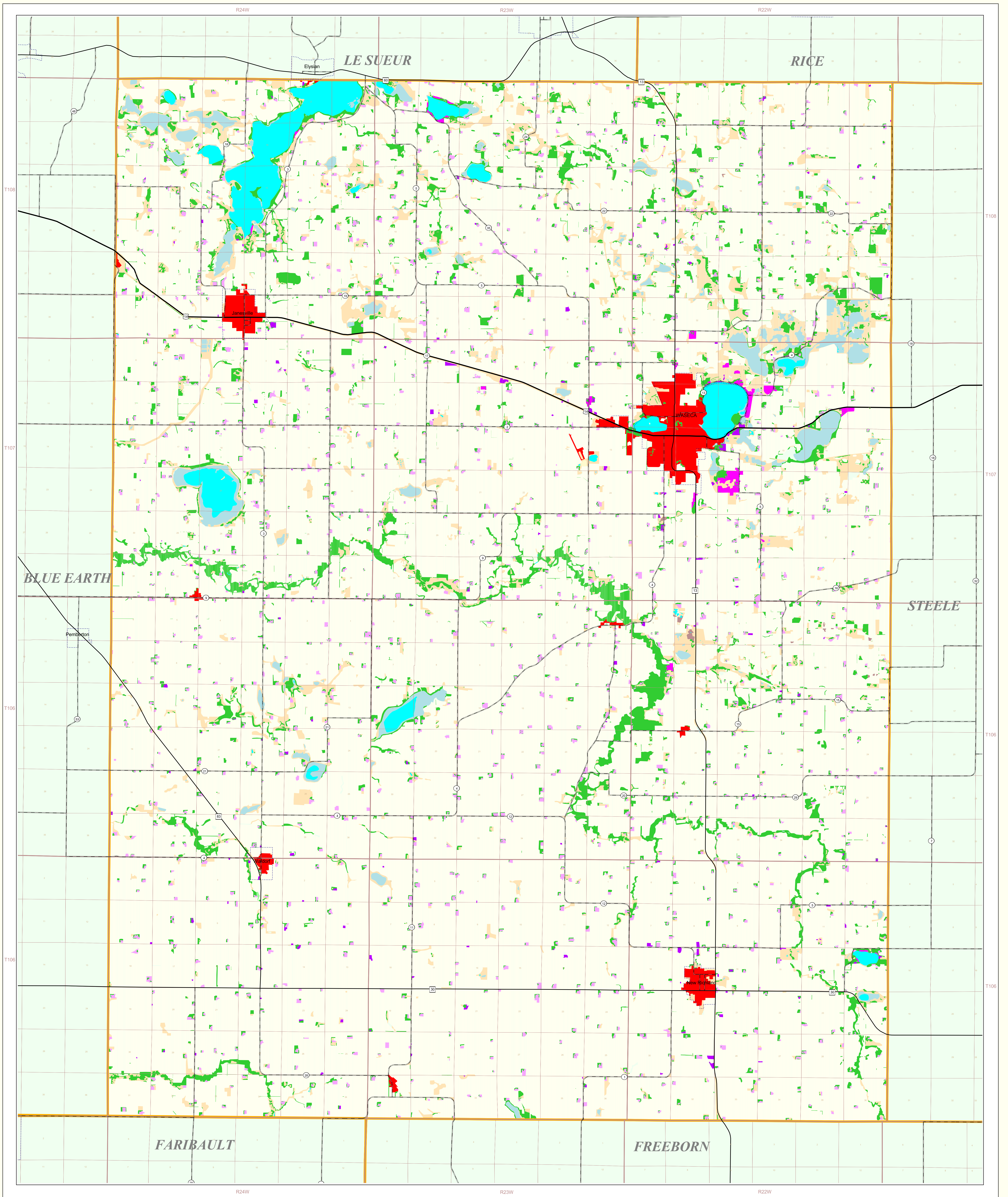


Waseca County Land Use and Cover

State of Minnesota
1988 - 1990



MAP FEATURES

- Land Use***
 - Urban and Industrial
 - Farmsteads and Rural Residences
 - Rural Residential Development Complexes
 - Other Rural Developments
 - Cultivated Land
 - Transitional Agricultural Land
 - Grassland
 - Grassland-Shrub-Tree Complex (Deciduous)
 - Grassland-Shrub-Tree Complex (Coniferous)
 - Deciduous Forest
 - Coniferous Forest
 - Water
 - Wetlands
 - Gravel Pits and Open Mines
 - Bare Rock
 - Exposed Soil, Sandbars, and Sand Dunes
 - Unclassified/Unlabeled/Outside State or County
- Cities***
 - COUNTY SEAT
 - Other Cities
 - Municipal Boundary
- Highways***
 - Interstate Highway
 - U.S. Trunk Highway
 - State Trunk Highway
 - County State-Aid Highway (CSAH)
- Public Land Survey***
 - State Boundary
 - County Boundary
 - Township & Range Section
 - T34 Township
 - R25W Range & Direction

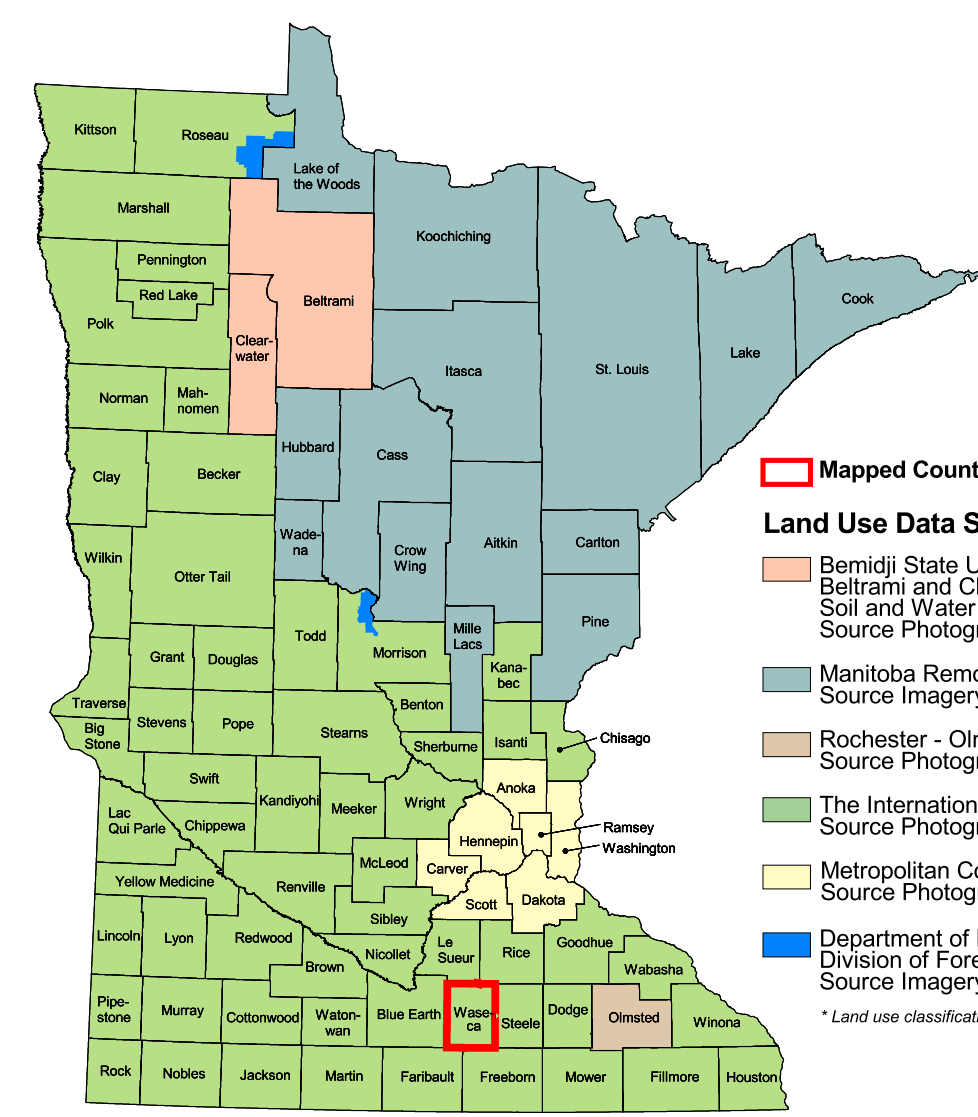
Waseca County Land Use Statistics

Source: The Land Management Information Center (LMIC)

DESCRIPTION	ACRES	% ACRES
Urban and Industrial	202.4	0.4
Farmsteads and Rural Residences	447.9	0.9
Rural Residential Development Complexes	27.9	0.1
Other Rural Developments	27.9	0.1
Cultivated Land	2,000.1	4.0
Transitional Agricultural Land	1,134.1	2.3
Grassland	30.0	0.1
Grassland-Shrub-Tree Complex (Deciduous)	1,134.1	2.3
Grassland-Shrub-Tree Complex (Coniferous)	30.0	0.1
Deciduous Forest	1,134.1	2.3
Coniferous Forest	30.0	0.1
Water	430.2	0.9
Wetlands	493.4	1.0
Gravel Pits and Open Mines	61.0	0.1
Bare Rock	202.4	0.4
Exposed Soil	2.1	0.0
Unclassified/Unlabeled/Outside State or County	2,618	100%

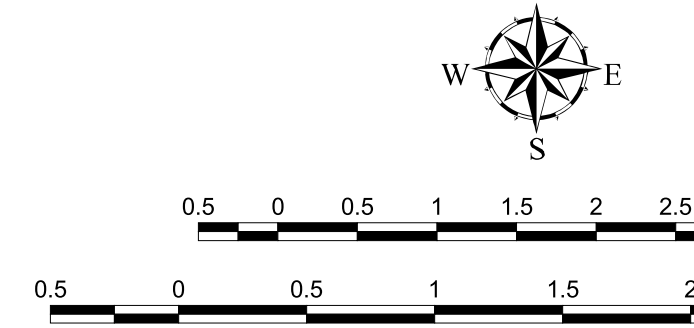
Data Sources

- The International Coalition for Land and Water Stewardship in the Red River Basin, 1988-1990
- Topographic Maps, U.S. Geological Survey, 1:250,000 scale, 1977 and 1986
- Minnesota Department of Transportation, 1991-92



Land Use Data Sources*

- Berndt State University - Department of Geography, Beltrami and Clearwater County Soil and Water Conservation Districts, Source Photography Date: 1986
- Marquette Remote Sensing Center, Source Imagery Dates: 1991-1995
- Rochester - Olmsted Planning Department, Source Photography Date: 1988-1990
- The International Coalition for Land and Water Stewardship in the Red River Basin, Land use / land cover interpretation was performed by DPA International. The smallest area interpreted was approximately 2.5 acres.
- Department of Natural Resources, Division of Forestry - Resource Assessment, Source Imagery Date: 1992, 1993 and 1996



ABOUT THIS MAP

Data Sources: The land use / land cover categories displayed on this map were derived from sources that included the U.S. Department of Agriculture, Agricultural Stabilization and Conservation Service's (ASCS) low altitude, section-centered, 35mm color aerial photography taken during 1988-1990 and U.S. Fish and Wildlife Service National Wetlands Inventory (NWI) 1:24,000-scale field maps. Landsat satellite images (date unrecorded) were used to verify the classifications.

Data Interpretation and Computerization: The project was coordinated by The International Coalition for Land and Water Stewardship in the Red River Basin. Land use / land cover interpretation was performed by DPA International. The smallest area interpreted was approximately 2.5 acres.

Land use / land cover information was transcribed on to stable-base mylars registered to U.S. Geological Survey 1:24,000-scale topographic maps and then digitized by DPA International of Alexandria Technical College staff. Minnesota Department of Natural Resources MIS Bureau staff then joined the digitized files together to create county coverages.

On-line documentation: <http://lucy.lmic.state.mn.us/metadata/luse89.html>

Credits and Acknowledgements

Data collection and interpretation supported by the Minnesota Future Resources Fund as recommended by the Legislative Commission on Minnesota Resources (LCMR).

The following groups also participated over an extended period:

- DPA International
- The International Coalition for Land and Water Stewardship in the Red River Basin
- Minnesota Department of Natural Resources
- Minnesota Department of Transportation
- North Dakota State University - Agricultural Engineering Department
- The Red River Management Board
- University of Minnesota - Department of Forest Resources
- University of North Dakota - Geography Department
- Widish, Smith and Nolling

Map Projection: UTM, Extended Zone 15
Datum: NAD83

Liability Statement
The Land Management Information Center (LMIC) does not warrant the results you may obtain by using this map. This map is provided "as is" without express or implied warranties, including warranties of merchantability and fitness. It is no event that LMIC is liable for any consequential, incidental or special damages, including any lost profits or lost savings, even if a LMIC representative has been advised of the possibility of such damages or any other claim by any third party.

Distribution Information
This map was prepared in April, 1999. Both the map and the data used to create it are available from the Land Management Information Center at Minnesota Planning.

You may also view a generalized, interactive land use map of Minnesota, along with detailed information about land use data at:

<http://mapserver.lmic.state.mn.us/landuse>

For further assistance, or to order copies of this map, contact:
Land Management Information Center
608 Cedar Street
Confidential Building, Room 330
St. Paul, MN 55155
Phone: (651) 296-1211
FAX: (651) 296-1212
E-Mail: clawing@lmic.state.mn.us

