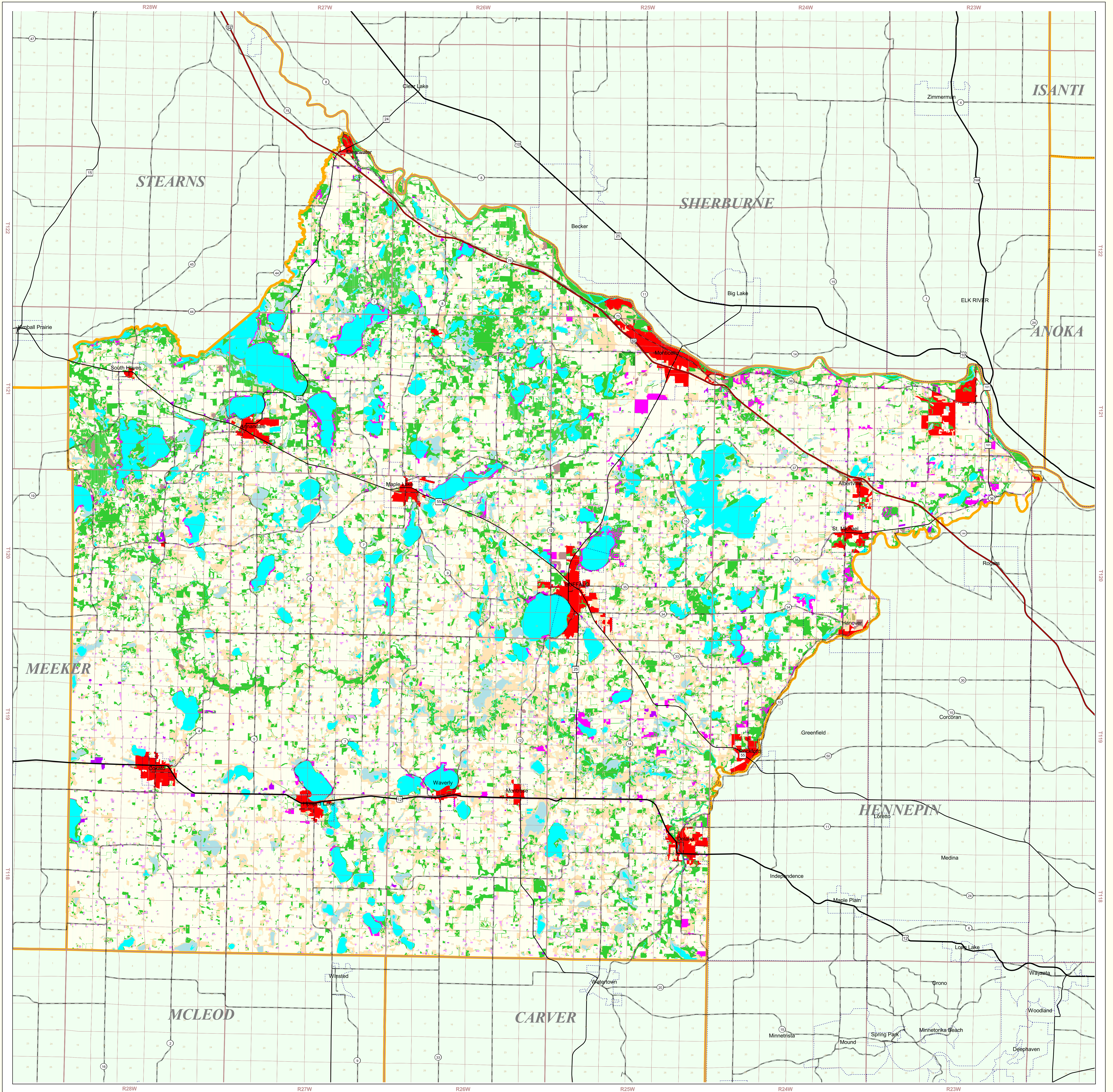


Wright County Land Use and Cover

State of Minnesota
1988 - 1990



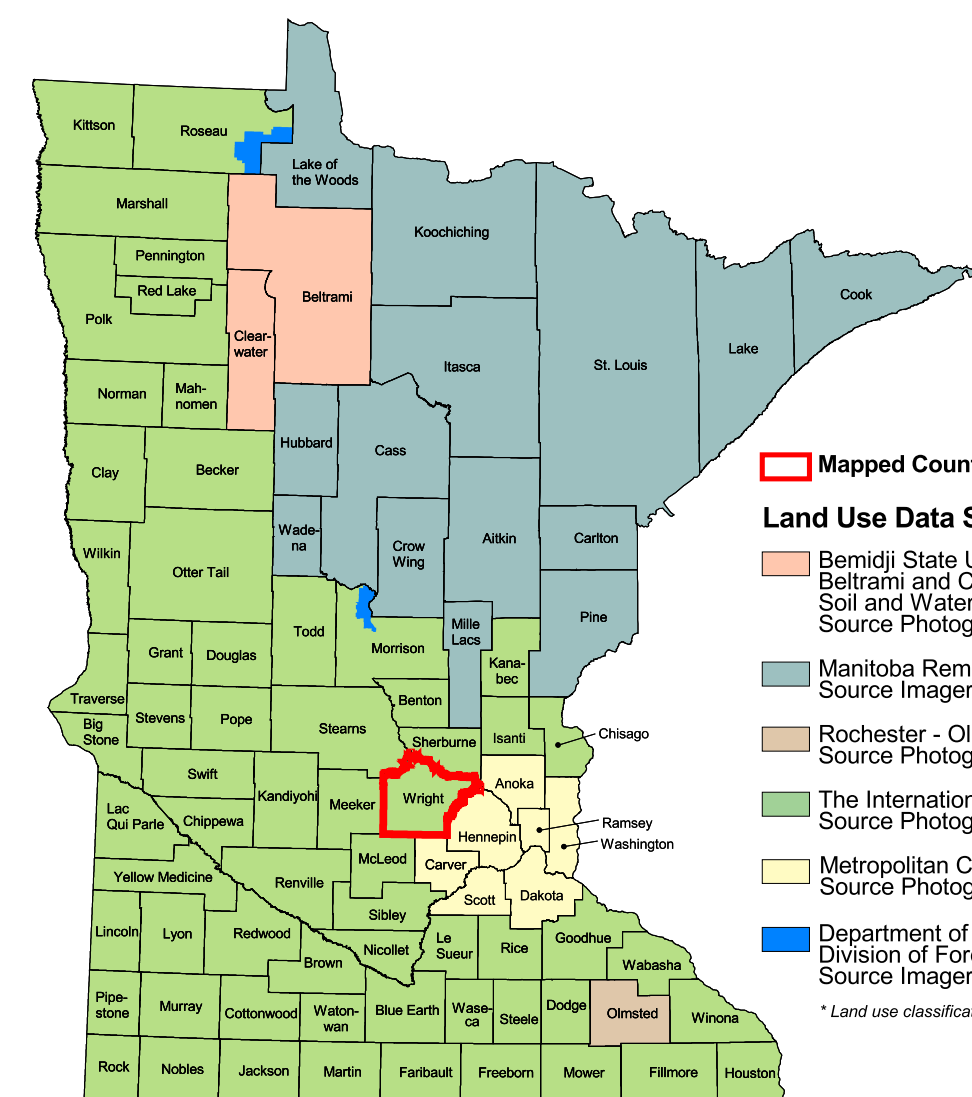
MAP FEATURES

- Land Use***
 - Urban and Industrial
 - Farmsteads and Rural Residences
 - Rural Residential Development Complexes
 - Other Rural Developments
 - Cultivated Land
 - Transitional Agricultural Land
 - Grassland
 - Grassland-Shrub-Tree Complex (Deciduous)
 - Grassland-Shrub-Tree Complex (Coniferous)
 - Deciduous Forest
 - Coniferous Forest
 - Water
 - Wetlands
 - Gravel Pits and Open Mines
 - Bare Rock
 - Exposed Soil, Sandbars, and Sand Dunes
 - Unclassified/Unlabeled/Outside State or County
- CITIES'**
 - COUNTY SEAT
 - Other Cities
 - Municipal Boundary
- Highways***
 - Interstate Highway
 - U.S. Trunk Highway
 - State Trunk Highway
 - County State-Aid Highway (CSAH)
- Public Land Survey***
 - State Boundary
 - County Boundary
 - Township & Range
 - Section
 - T34 Township
 - R25W Range & Direction

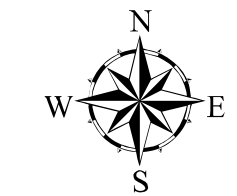
Wright County Land Use Statistics

Source: The Land Management Information Center (LMIC)

DESCRIPTION	ACRES	% ACRES
Urban and Industrial	3,029.8	0.7%
Farmsteads and Rural Residences	1,0897.9	2.3%
Rural Residential Development Complexes	4,545.9	0.9%
Other Rural Developments	1,014.5	0.2%
Cultivated Land	248,599.2	53.5%
Transitional Agricultural Land	165.5	< 0.0%
Grassland	11,624.4	19.3%
Grassland-Shrub-Tree Complex (Deciduous)	3,399.5	0.7%
Grassland-Shrub-Tree Complex (Coniferous)	25.9	< 0.0%
Deciduous Forest	59,194.2	13.0%
Coniferous Forest	25.9	< 0.0%
Water	3,579.2	7.8%
Wetlands	17,455.3	3.8%
Gravel Pits and Open Mines	745.2	0.2%
Bare Rock	17.4	< 0.0%
Exposed Soil	33.1	< 0.0%
Unclassified/Unlabeled/Outside State or County	35.1	< 0.0%
TOTAL	456,964	100%



- Land Use Data Sources***
 - Benihl State University - Department of Geography, Beltrami and Clearwater County Soil and Water Conservation Districts Source Imagery Date: 1986
 - Manitoba Remote Sensing Centre Source Imagery Date: 1991-1995
 - Rochester - Olmsted Planning Department Source Imagery Date: 1992
 - The International Coalition Source Imagery Date: 1988-1990
 - Metropolitan Council Source Imagery Date: 1990
 - Department of Natural Resources Division of Forestry - Resource Assessment Source Imagery Date: 1992, 1993 and 1998
- Map of County Location**



0 1 2 3 4 5 Miles

ABOUT THIS MAP

Data Sources: The land use / land cover categories displayed on this map were derived from sources that included the U. S. Department of Agriculture, Agricultural Stabilization and Conservation Service's (ASCS) low altitude, section-centered, 35mm cover aerial photography taken during 1988-1990 and U. S. Fish and Wildlife Service National Wetlands Inventory (NWI) 1:24,000-scale field maps. Land use / land cover information was verified by DPA International. The smallest area interpreted was approximately 2.5 acres.

Data Interpretation and Computerization: The project was coordinated by the International Coalition for Land and Water Stewardship in the Red River Basin. Land use / land cover information was transcribed on to stable-base mylar registered to U. S. Geological Survey 1:24,000-scale topographic maps and then digitized by DPA International or Alexandria Technical College staff. Minnesota Department of Natural Resources MIS Bureau staff then joined the digitized files together to create county coverages.

On-line documentation: <http://lucy.lmic.state.mn.us/metadata/fuse89.html>

Credits and Acknowledgements
Data collection and interpretation supported by the Minnesota Future Resources Fund as recommended by the Legislative Commission on Minnesota Resources (LCMR).

The following groups also participated over an extended period:
Alexandria Technical College - GIS Program
DPA International
The International Coalition
Minnesota Board of Water and Soil Resources
Minnesota Department of Natural Resources
Minnesota Land Management Information Center
North Dakota State University - Agricultural Engineering Department
The Red River Management Board
University of Minnesota - Department of Forest Resources
University of North Dakota - Geography Department
Wisdom, Smith and Helling

Map Projection: UTM Extended Zone 15
Datum: NAD83

Liability statement
The Land Management Information Center (LMIC) does not warrant the results you may obtain by using this map. This map is provided "as is" without express or implied warranties, including warranties of merchantability and fitness. In no event will LMIC be liable for any consequential, incidental or special damages, including any lost profits or lost savings, even if a LMIC representative has been advised of the possibility of such damages or any other claim by any third party.

Distribution information
This map was prepared in April, 1999. Both the map and the data used to create it are available from the Land Management Information Center at Minnesota Planning.

You may also view a generalized, interactive land use map of Minnesota, along with detailed information about land use data at:
<http://mapserver.lmic.state.mn.us/landuse>

For further assistance, or to order copies of this map, contact:
Land Management Information Center
656 Cedar Street
Centennial Building, Room 330
St. Paul, MN 55155
Phone: (651) 296-1211
FAX: (651) 296-1212
E-Mail: clearinghouse@mpmplan.state.mn.us



1 The International Coalition Source Imagery Dates: 1988-1990
2 1:24,000-scale Cover Files, U.S. Bureau of the Census, 1992
3 Minnesota Department of Transportation, 1997-98

4 Produced by the Minnesota Land Management Information Center from U.S. Geological Survey GISDB, 1:100,000 scale, 30'x30' quadrangle maps published between 1977 and 1998.