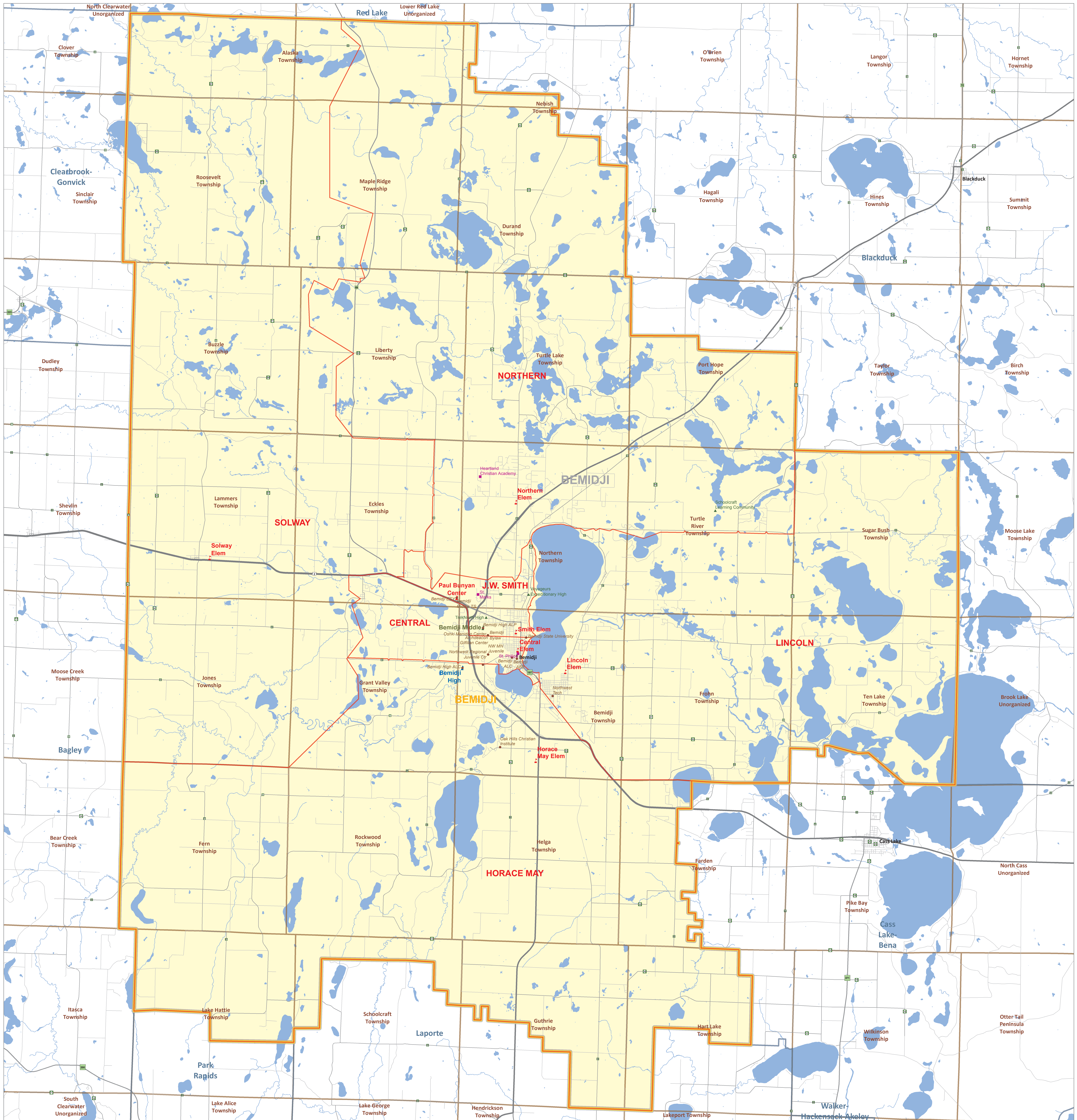


Public School District Attendance Areas and Educational Facility Locations

SY2013-2014

Bemidji
31

Map 1 of 1



- Public Educational Facilities or Programs**¹
- Elementary school
 - Middle / Junior high school
 - High / Secondary school
 - School District Office
 - Non-Public school
 - Public Charter school
 - Other School Program (examples)
 - Area Learning Center (ALC)
 - Area Learning Program (ALP)
 - Targeted Services
 - College/University
 - Correctional
 - Secondary Education
- Public School Attendance Areas**¹
- Elementary School Attendance Area **ELEM**
 - Middle School Attendance Area **MIDD**
 - High School Attendance Area **HIGH**

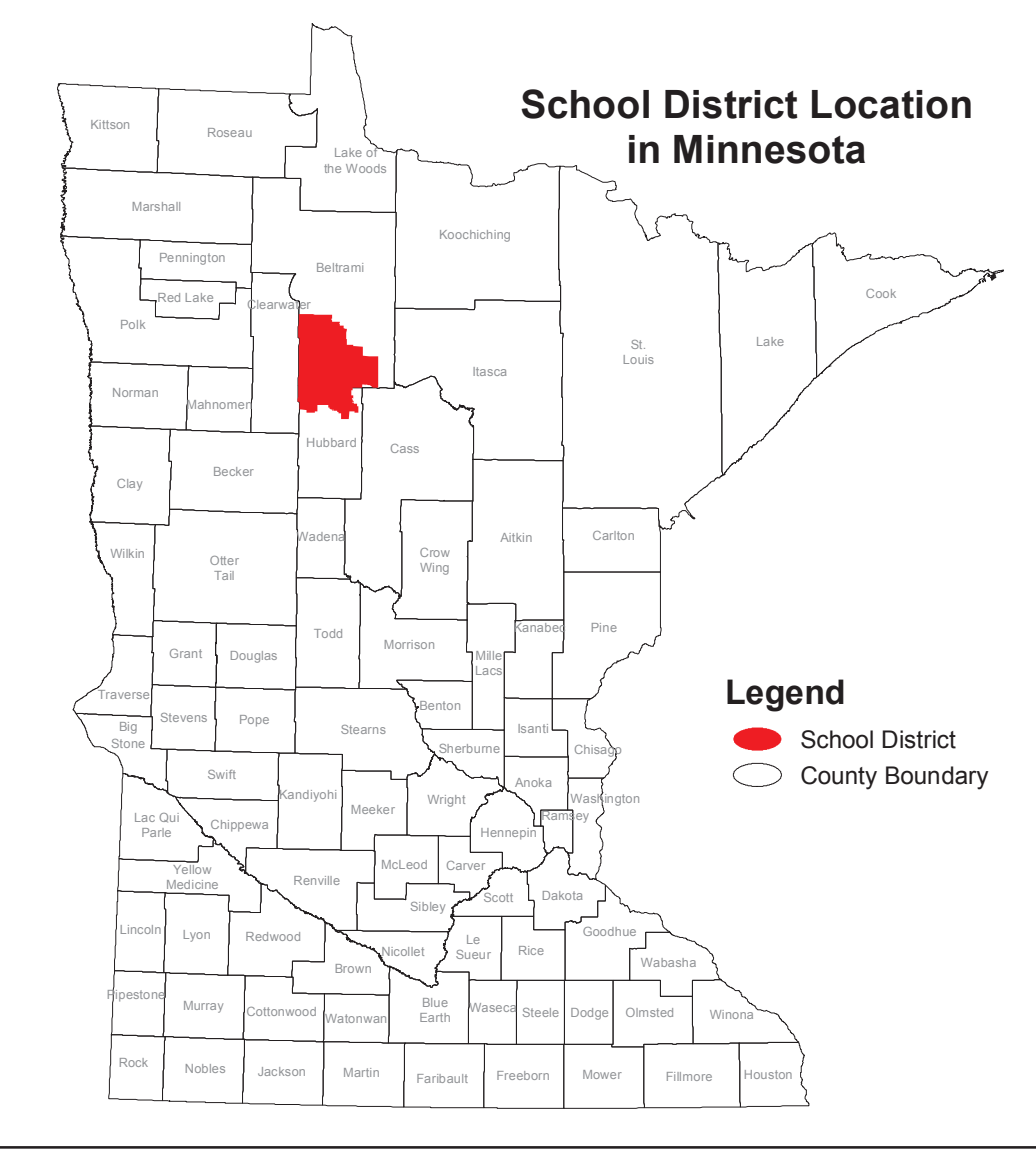
- Public School Districts**¹
- School District
 - Adjacent School District
 - INSET - SEE MAP 2 OF 2 (if applicable)
- Other Features**
- Interstate Highway²
 - U.S. Highway²
 - State Highway²
 - County Highway²
 - Road/Street²
 - Railroad²
 - Stream²
 - Lake/Pond²
 - Minor Civil Division⁴
 - Public Land Survey Township / Range³
 - Public Land Survey Section³

Data Sources:

1. Minnesota Department of Education, IT Division (2013)
2. Metropolitan Council (2010) Minnesota Department of Transportation (2004)
3. Minnesota Geographic Information Office
4. U.S. Bureau of the Census, Minnesota Legislative GIS Office (modified to include annexations files with Municipal Board through May 2003)
5. Minnesota Department of Natural Resources

Special Note:
The school district boundary appearing on this map do not necessarily represent the legal boundary of the district. It is a generalization of boundaries drawn on maps in the late 1980's by county officials and modified by the U.S. Bureau of the Census, most recently for Census 2000. Since 2005, district boundaries have been modified by the Dept. of Education based on completed County Parcel information. Please contact your county auditor or assessor to obtain an accurate legal description of the boundary.

Liability Statement:
The Minnesota Department of Education does not warrant the results you may obtain by using this map. This map is provided without express or implied warranties, including warranties of merchantability and fitness. In no event will MDE be liable for any consequential, incidental or special damages, including any lost profits or lost savings, even if an MDE representative has been advised of the possibility of such damages or any other claim by any third party.



Scale: 1 : 70,890

For further assistance with this map, contact:

Jake Stark jake.stark@state.mn.us
 Scott Freburg scott.freburg@state.mn.us

Minnesota Department of Education
 MN IT @ Education
 1500 Highway 36 West
 Roseville, MN 55113

Map Created: September 2011

Bemidji

Public Schools

Bemidji High
Bemidji Middle
Central Elem
Horace May Elem
Lincoln Elem
Northern Elem
Paul Bunyan Center
Schoolcraft Learning Community
Smith Elem
Solway Elem
TrekNorth High
Voyageurs Expeditionary High

Other School Programs

Archdeacon Gilfillan Center
Bemidji Bylaw
Bemidji ESY
Bemidji Middle TS
Bemidji Regional Interdist. Council
Bemidji State University
North Country Voc. Coop. Ctr.
Northwest Regional Juvenile Ctr
Northwest Tech
NW MN Juvenile
Oak Hills Christian Institute
Oshki Manidoo Center

Nonpublic Schools

Heartland Christian Academy
St. Marks
St. Philips