

**Public School District Attendance Areas and Educational Facility Locations**

**Mankato**  
**77**

Map 1 of 1

**Public Educational Facilities or Programs**

- Elementary school
- Middle / Junior high school
- High / Secondary school
- School District Office
- Non-Public school
- Public Charter school
- Other School Program (examples)
  - Area Learning Center (ALC)
  - Area Learning Program (ALP)
  - Targeted Services
  - Correctional
  - Post-Secondary Education

**Public School Attendance Areas**

- Elementary School Attendance Area **ELEM**
- Middle School Attendance Area **MIDD**
- High School Attendance Area **HIGH**

**Public School Districts**

- School District
- Adjacent School District
- INSET - SEE MAP 2 OF 2 (if applicable)

**Other Features**

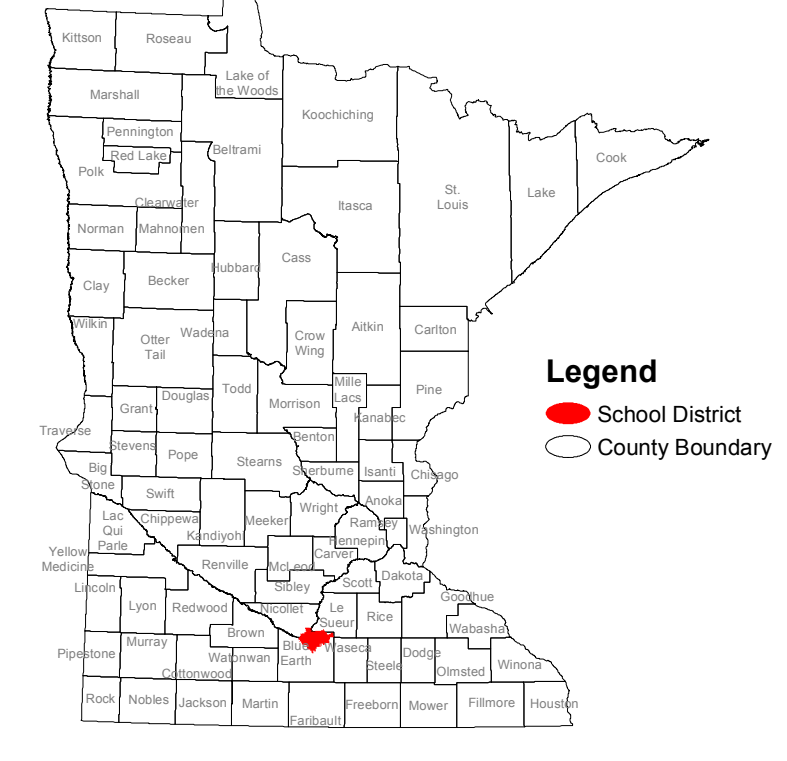
- Interstate Highway
- U.S. Highway
- State Highway
- County Highway
- Road/Street
- Railroad
- Stream
- Lake/Pond
- Minor Civil Division (Cities, Townships and Unorganized areas)
- Public Land Survey Township / Range
- Public Land Survey Section

- Data Sources:**
1. Minnesota Department of Education, MN.IT @ Education (2014)
  2. Metropolitan Council, 2010, Minnesota Department of Transportation (2004)
  3. Minnesota GeoSpatial Information Office
  4. U.S. Bureau of the Census, Minnesota Legislative GIS Office (modified to include annexations files with Municipal Board through May 2003)
  5. Minnesota Department of Natural Resources

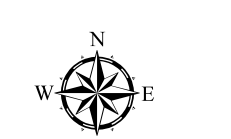
**Special Note:**  
The school district boundary appearing on this map do not necessarily represent the legal boundary of the district. It is a generalization of boundaries drawn on maps in the late 1980's by county officials and modified by the U.S. Bureau of the Census, most recently for Census 2010. Since 2005, district boundaries have been modified by the Dept. of Education based on completed County Parcel information. Please contact your county auditor or assessor to obtain an accurate legal description of the boundary.

**Liability Statement:**  
The Minnesota Department of Education does not warrant the results you may obtain using this map. This map is provided without express or implied warranties, including warranties of merchantability and fitness. In no event will MDE be liable for any consequential, incidental or special damages, including any lost profits or lost savings, even if an MDE representative has been advised of the possibility of such damages or any other claim by any third party.

**School District Location in Minnesota**

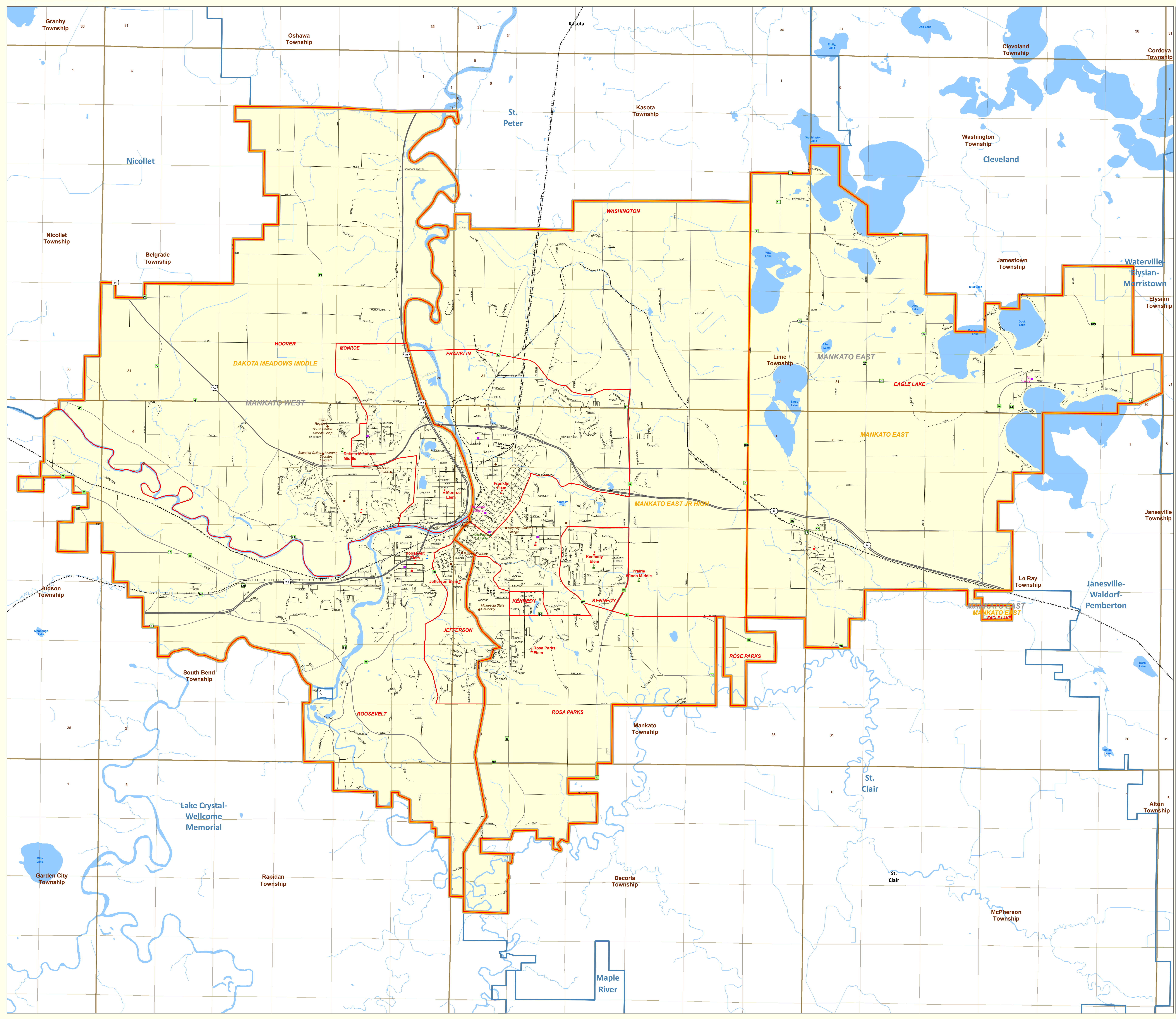


**Legend**  
 School District  
 County boundary



1 : 31,270

For further assistance with this map, contact:  
 Scott Freburg scott.freburg@state.mn.us  
 Jake Stark jake.stark@state.mn.us  
 MN Department of Education  
 MN.IT @ Education  
 1500 Highway 36 West  
 Roseville, MN 55113  
 Map Created: November 2015



# Mankato

## Public Schools

Bridges Community El.  
Dakota Meadows Middle  
Eagle Lake Elem  
Franklin Elem  
Hoover Elem  
Jefferson Elem  
Kato Public Charter  
Kennedy Elem  
Mankato East High  
Mankato East Jr. High  
Mankato West High  
Monroe Elem  
Prairie Winds Middle  
Roosevelt Elem  
Rosa Parks Elem  
Washington Elem

## Other Educational Programs

Bethany Lutheran College  
Blue Earth County Library  
Central Freedom  
Central High ALC  
Futures Program  
Life Lines ALP  
Mankato Area Night School  
Mankato Area Summer School  
Mankato ECFE  
Mankato ECSE  
Mankato ESY  
Mankato Technical College  
Mankato TS  
Minnesota State University  
North Mankato Taylor Library  
RMIC-Region 5  
SC MN Inter-Library Exchange  
School District Office  
Socrates Online  
Socrates Program  
South Central Service Coop  
Traverse des Sioux Library Coop

## Nonpublic Schools

All Saints  
Good Shepherd Lutheran  
Grace Christian  
Immanuel Lutheran  
Loyola Catholic  
Mount Olive Lutheran  
Risen Savior Lutheran