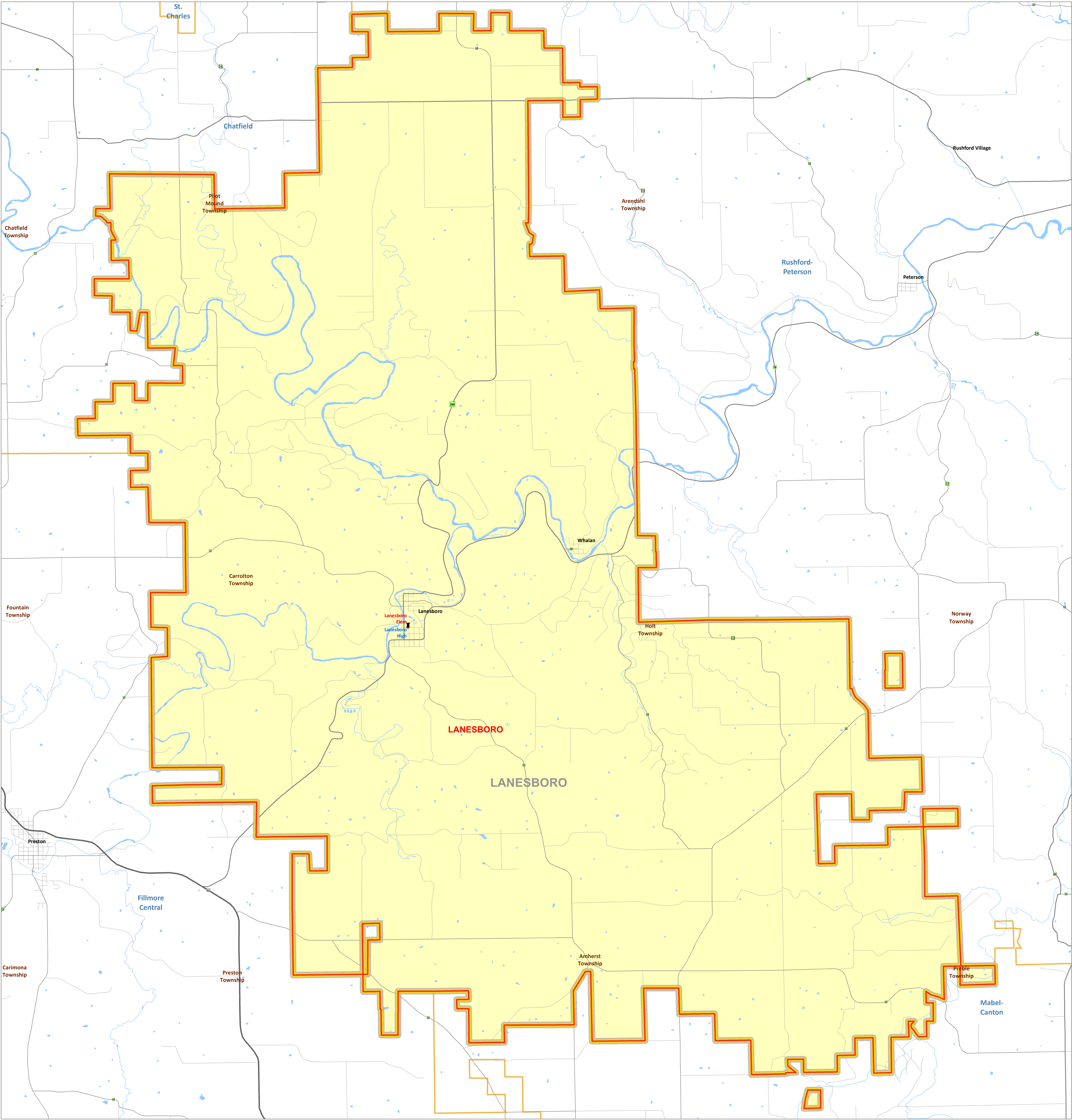


Public School District Attendance Areas and Educational Facility Locations

Lanesboro
229

Map 1 of 1



Public Educational Facilities or Programs¹

- Elementary school
- Middle / Junior high school
- High / Secondary school
- School District Office
- Non-Public school
- Public Charter school
- Other School Program (examples)
 - Area Learning Center (ALC)
 - Area Learning Program (ALP)
 - Targeted Services
 - College/University
 - Correctional
 - Secondary Education

Public School Attendance Areas¹

- Elementary School Attendance Area **ELEM**
- Middle School Attendance Area **MIDD**
- High School Attendance Area **HIGH**

Public School Districts¹

- School District
- Adjacent School District
- INSET - SEE MAP 2 OF 2 (if applicable)

Other Features

- Interstate Highway²
- U.S. Highway²
- State Highway²
- County Highway²
- Road/Street²
- Railroad²
- Stream⁵
- Lake/Pond⁵
- Minor Civil Division⁴
- Public Land Survey Township / Range³
- Public Land Survey Section³

Data Sources:

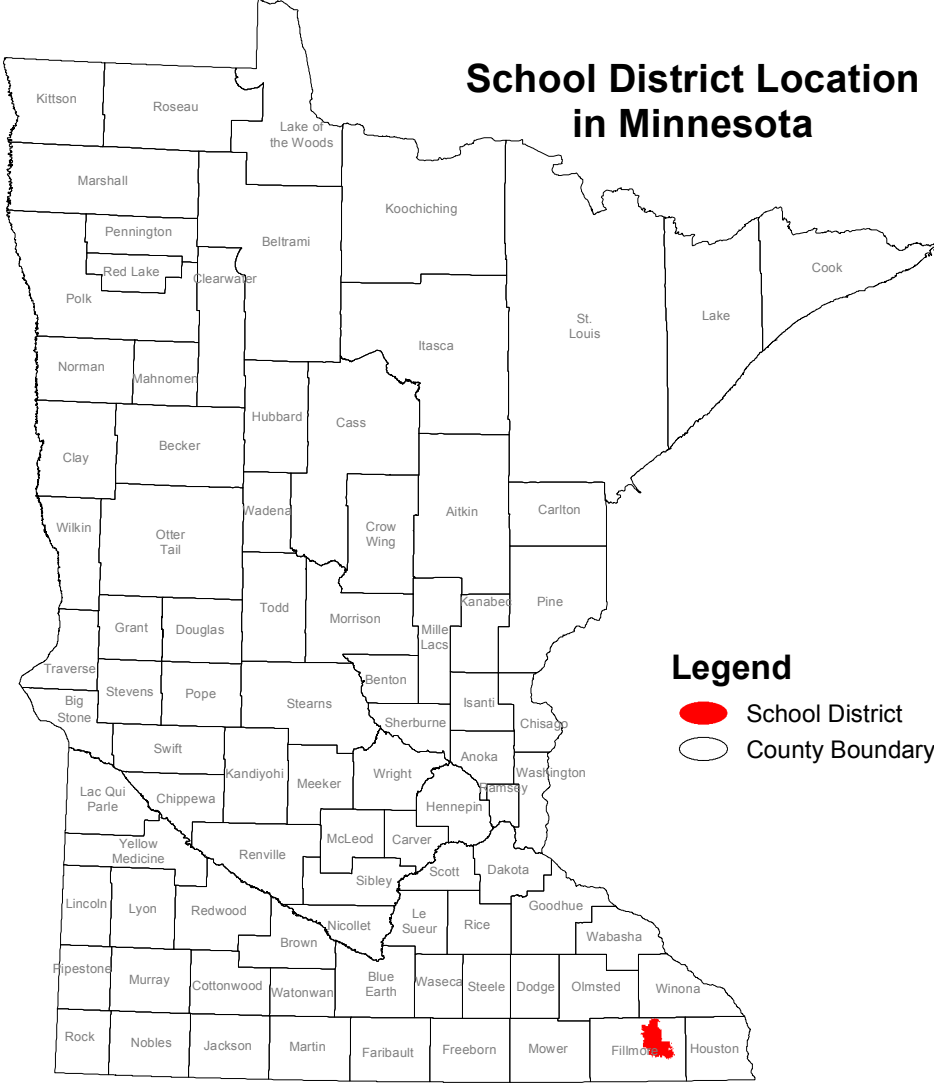
- Minnesota Department of Education, IT Division, 2010
- Metropolitan Council, 2010, Minnesota Department of Transportation, 2004
- Minnesota Geographic Information Office
- U.S. Bureau of the Census, Minnesota Legislative GIS Office (modified to include annexations files with Municipal Board through May 2003)
- Minnesota Department of Natural Resources

Special Note:

The school district boundary appearing on this map do not necessarily represent the legal boundary of the district. It is a generalization of boundaries drawn on maps in the late 1980's by county officials and modified by the U.S. Bureau of the Census, most recently for Census 2000. Since 2005, district boundaries have been modified by the Dept. of Education based on completed County Parcel information. Please contact your county auditor or assessor to obtain an accurate legal description of the boundary.

Liability Statement:

The Minnesota Department of Education does not warranty the results you may obtain by using this map. This map is provided without express or implied warranties, including warranties of merchantability and fitness. In no event will MDE be liable for any consequential, incidental or special damages, including any lost profits or lost savings, even if an MDE representative has been advised of the possibility of such damages or any other claim by any third party.



1 : 28,050

For further assistance with this map, contact:

Jake Stark jake.stark@state.mn.us

MN Department of Education
Division of Information Technology
1500 Highway 36 West
Roseville, MN 55113

Minnesota Department of
Education

Lanesboro

Public Schools

- Lanesboro Elem
- Lanesboro High