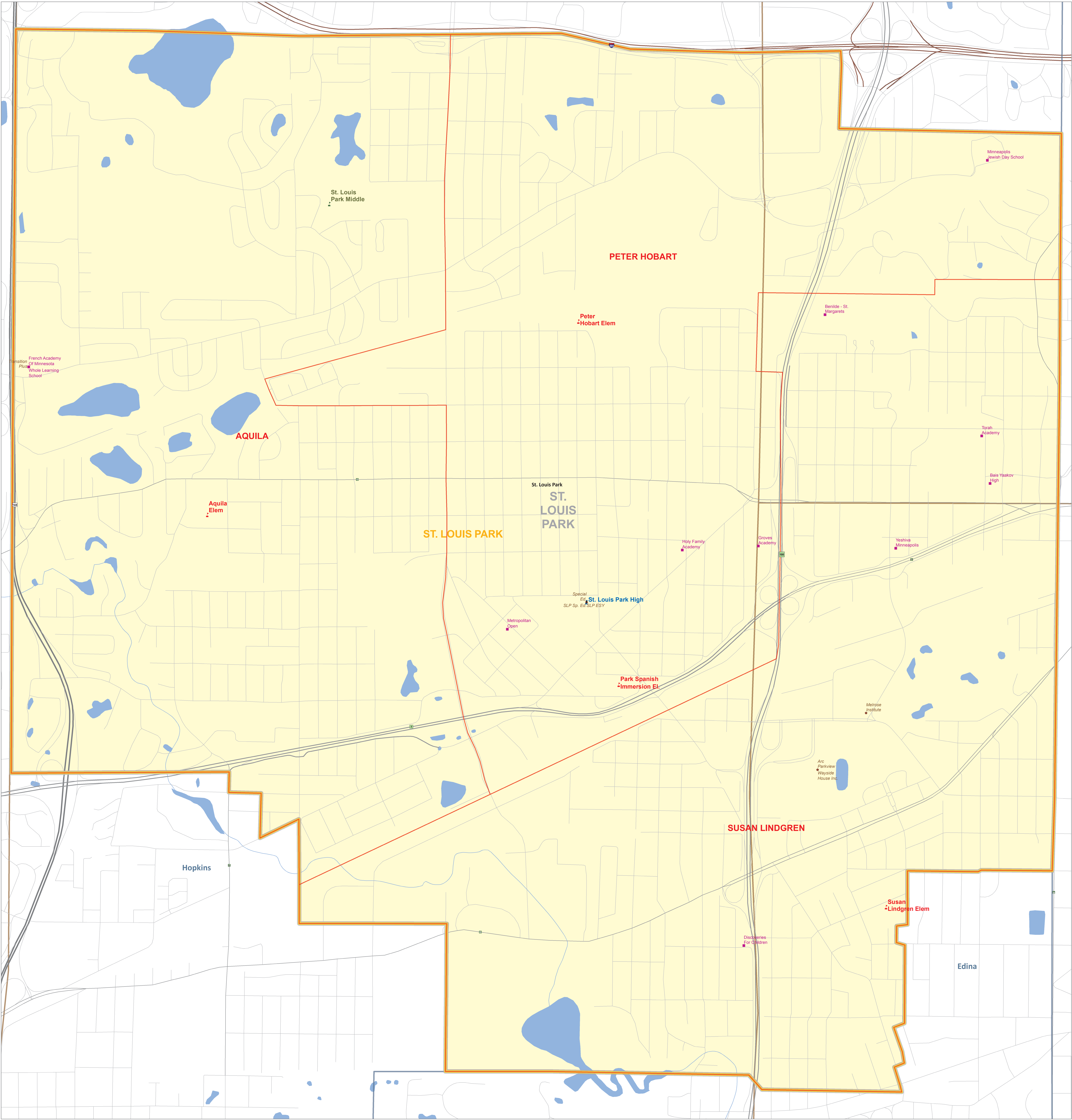


Public School District Attendance Areas and Educational Facility Locations

SY2013-2014

St. Louis Park
283

Map 1 of 1



Public Educational Facilities or Programs ¹

- Elementary school
- Middle / Junior high school
- High / Secondary school
- School District Office
- Non-Public school
- Public Charter school
- Other School Program (examples)
 - Area Learning Center (ALC)
 - Area Learning Program (ALP)
 - Targeted Services
 - College/University
 - Correctional
 - Secondary Education

Public School Attendance Areas ¹

- Elementary School Attendance Area **ELEM**
- Middle School Attendance Area **MIDD**
- High School Attendance Area **HIGH**

Public School Districts ¹

- School District
- Adjacent School District
- INSET - SEE MAP 2 OF 2 (if applicable)

Other Features ²

- Interstate Highway
- U.S. Highway
- State Highway
- County Highway
- Road/Street
- Railroad
- Stream
- Lake/Pond
- Minor Civil Division
- Public Land Survey Township / Range
- Public Land Survey Section

Data Sources:

- Minnesota Department of Education, IT Division (2013)
- Metropolitan Council (2010) Minnesota Department of Transportation (2004)
- Minnesota Geographic Information Office
- U.S. Bureau of the Census, Minnesota Legislative GIS Office (modified to include annexations files with Municipal Board through May 2003)
- Minnesota Department of Natural Resources

Special Note:
The school district boundary appearing on this map do not necessarily represent the legal boundary of the district. It is a generalization of boundaries drawn on maps in the late 1980's by county officials and modified by the U.S. Bureau of the Census, most recently for Census 2000. Since 2005, district boundaries have been modified by the Dept. of Education based on completed County Parcel information. Please contact your county auditor or assessor to obtain an accurate legal description of the boundary.

Liability Statement:
The Minnesota Department of Education does not warrant the results you may obtain by using this map. This map is provided without express or implied warranties, including warranties of merchantability and fitness. In no event will MDE be liable for any consequential, incidental or special damages, including any lost profits or lost savings, even if an MDE representative has been advised of the possibility of such damages or any other claim by any third party.

School District Location in Minnesota

Legend

- School District
- County Boundary

For further assistance with this map, contact:

Jake Stark jake.stark@state.mn.us
Scott Freiburg scott.freiburg@state.mn.us

MN Department of Education
MN.IT @ Education
1500 Highway 56 West
Roseville, MN 55113

1 : 6,610

Minnesota Department of Education

Map Created: September 2011

St. Louis Park

Public Schools

Aquila Elem
Park Spanish Immersion El.
Peter Hobart Elem
St. Louis Park High
St. Louis Park Middle
Susan Lindgren Elem

Other School Programs

283 Aquila LC TS
283 Cedar Manor TS
283 District Summer Programs TS
283 Indep. Study 15 and under IS
283 Meadowbrook Elem TS
283 Park Spanish Immersion TS
283 Perspective SLP TS
283 Peter Hobard Elem TS
283 St Louis Park Independent Study
283 St. Louis Park ALC
283 St. Louis Park LC TS
283 Susan Lindgren TS
ALC Golden Valley (Rap) IS
Arc Parkview
Melrose Institute
SLP ESY
SLP Sp. Ed.
Special Ed.
Transition Plus
Wayside House Inc.

Nonpublic Schools

Bais Yaakov High
Benilde - St. Margarets
Discoveries For Children
French Academy Of Minnesota
Groves Academy
Holy Family Academy
Metropolitan Open
Minneapolis Jewish Day School
Torah Academy
Whole Learning School
Yeshiva Minneapolis