

Public School District Attendance Areas and Educational Facility Locations

**Mounds View
621**

Map 1 of 1

Public Educational Facilities or Programs

- Elementary school
- Middle / Junior high school
- High / Secondary school
- School District Office
- Non-Public school
- Public Charter school
- Other School Program (examples)
Area Learning Center (ALC)
Area Learning Program (ALP)
Targeted Services
Correctional
Post-Secondary Education

Public School Attendance Areas

- Elementary School Attendance Area **ELEM**
- Middle School Attendance Area **MIDD**
- High School Attendance Area **HIGH**

Public School Districts

- School District
- Adjacent School District
- INSET - SEE MAP 2 OF 2 (if applicable)

Other Features

- Interstate Highway ²
- U.S. Highway ²
- State Highway ²
- County Highway ²
- Road/Street ²
- Railroad ³
- Stream ⁵
- Lake/Pond ⁶
- Minor Civil Division ⁴
(Cities, Townships and Unorganized areas)
- Public Land Survey Township / Range ³
- Public Land Survey Section ³

Data Sources:

1. Minnesota Department of Education, MN.IT @ Education (2014)
2. Metropolitan Council, 2010, Minnesota Department of Transportation (2004)
3. Minnesota GeoSpatial Information Office
4. U.S. Bureau of the Census, Minnesota Legislative GIS Office (modified to include annexations files with Municipal Board through May 2003)
5. Minnesota Department of Natural Resources

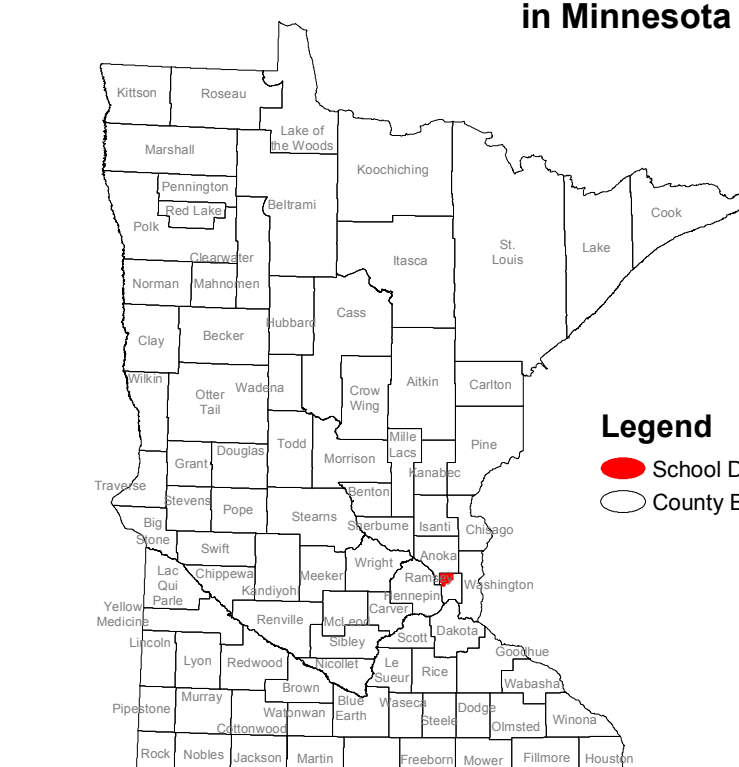
Special Note:

The school district boundary appearing on this map do not necessarily represent the legal boundary of the district. It is a generalization of boundaries drawn on maps in the late 1980's by county officials' and modified by the U.S. Bureau of the Census, most recently for Census 2010. Since 2005, district boundary's have been modified by the Dept. of Education based on completed County Parcel Information. Please contact your county auditor or assessor to obtain an accurate legal description of the boundary.

Liability Statement:

The Minnesota Department of Education does not warranty the results you may obtain using this map. This map is provided without express or implied warranties, including warranties of merchantability and fitness. In no event will MDE be liable for any consequential, incidental or special damages, including any lost profits or lost savings, even if an MDE representative has been advised of the possibility of such damages or any other claim by any third party.

School District Location in Minnesota



Legend
 School District
 County boundary

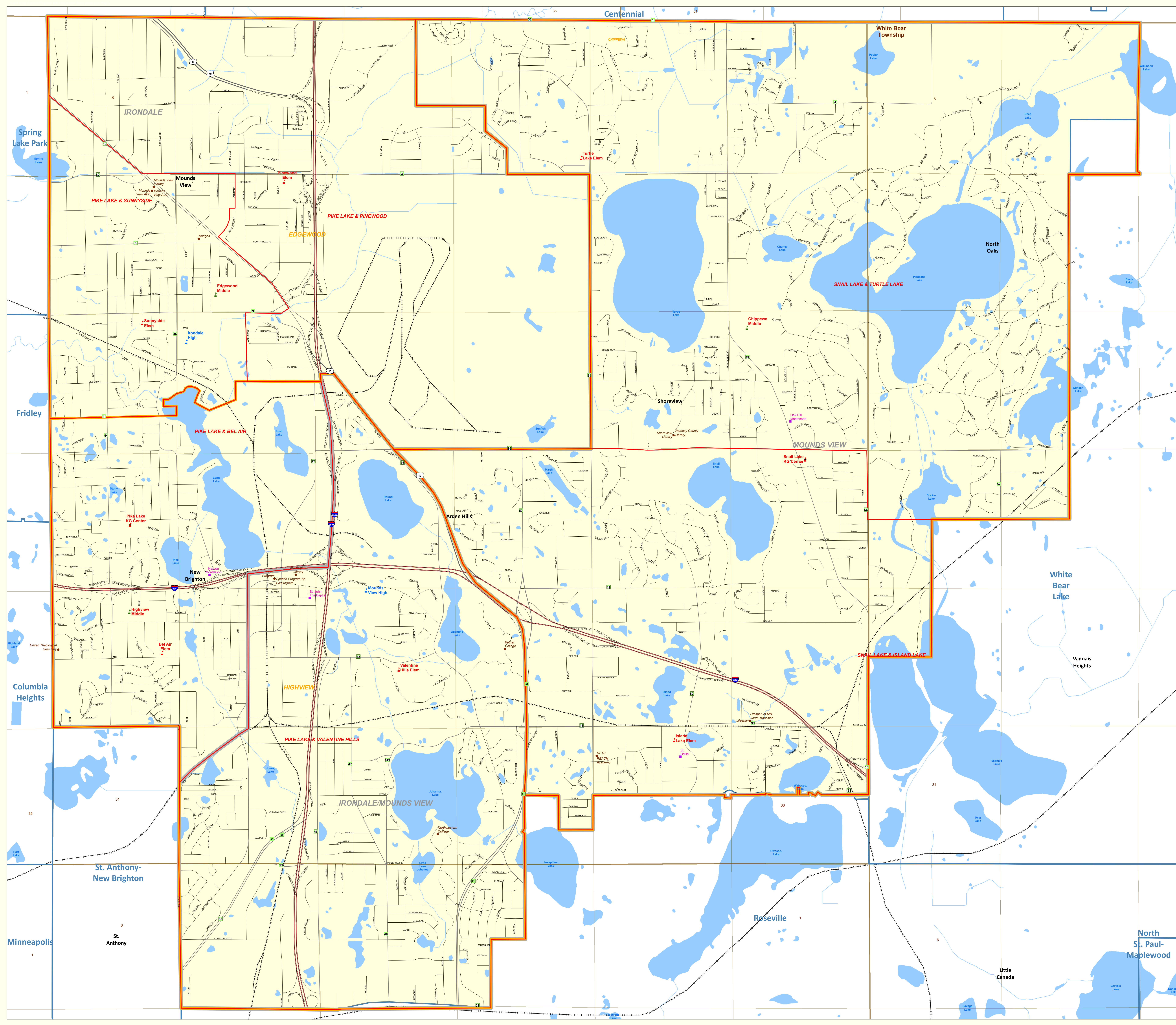


1 : 13,450

For further assistance with this map, contact:

Scott Freburg scott.freburg@state.mn.us
 Jake Stark jake.stark@state.mn.us

Minnesota Department of Education
 MN.IT @ Education
 1500 Highway 36 West
 Roseville, MN 55113
 Map Created: November 2015



Mounds View

Public Schools

Bel Air Elem
Chippewa Middle
Edgewood Middle
Highview Middle
Irondale High
Island Lake Elem
Mounds View High
Pike Lake KG Center
Pinewood Elem
Snail Lake KG Center
Sunnyside Elem
Turtle Lake Elem
Valentine Hills Elem

Other Educational Programs

Bethel College
Birth to Two ECSE
Bridges
ECSE Program
High School Summer Program
Lifespan
Lifespan of MN Youth Transition
Mounds View ABE
Mounds View ALC
Mounds View ECFE
Mounds View ESY
Mounds View Library
NETS
New Brighton Library
Northwestern College
Ramsey County Library
REACH Academy
School District Office
Shared Time Program
Shoreview Library
Speech Program-Sp Ed Program
Targeted Services-Elem
Targeted Services-Middle
United Theological Seminary

Nonpublic Schools

Harbon Montessori
Oak Hill Montessori
St. John The Baptist
St. Odilia