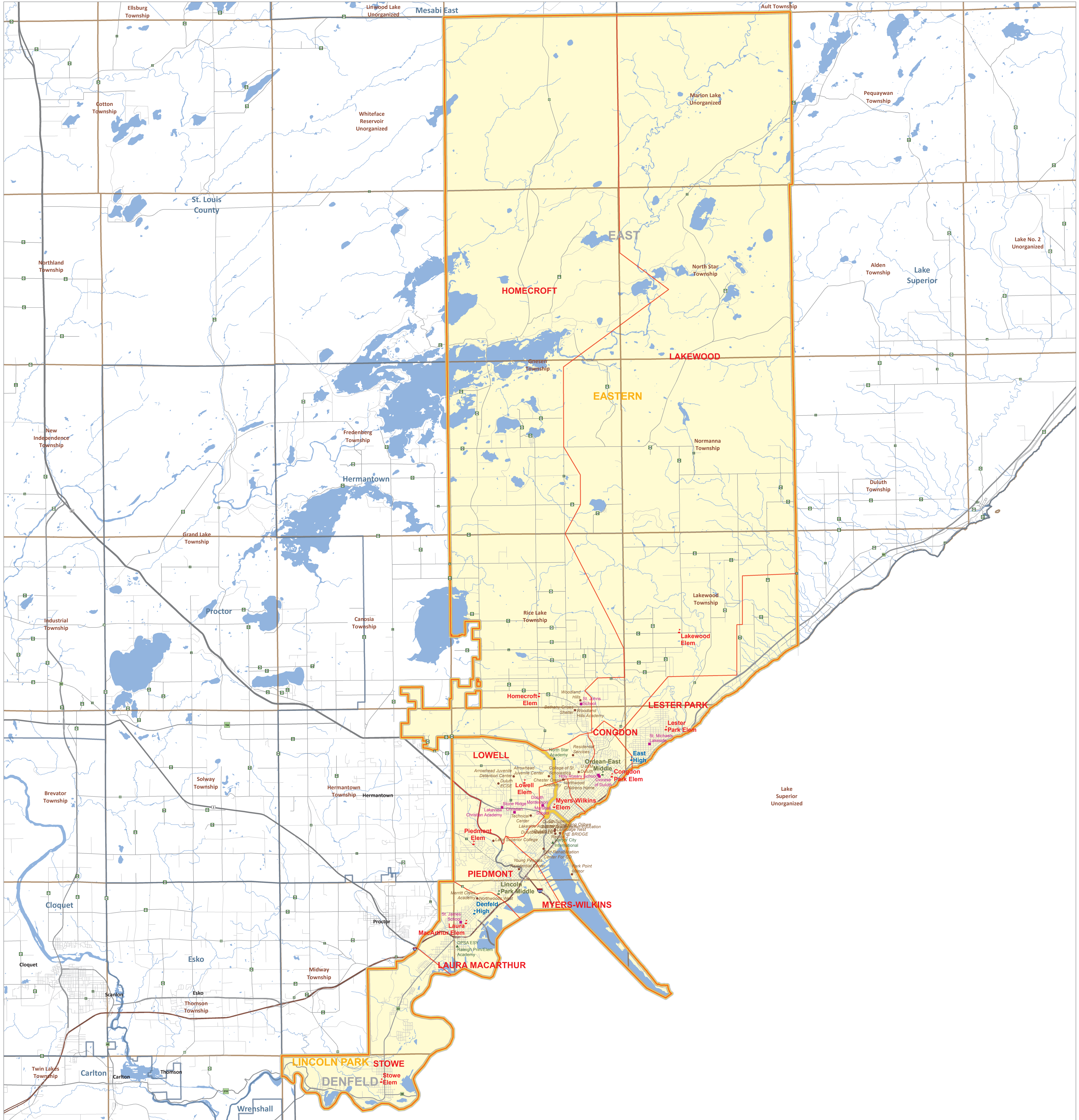


Public School District Attendance Areas and Educational Facility Locations

SY2013-2014

Duluth
709

Map 1 of 1



Public Educational Facilities or Programs¹

- Elementary school
- Middle / Junior high school
- High / Secondary school
- School District Office
- Non-Public school
- Public Charter school
- Other School Program (examples)
 - Area Learning Center (ALC)
 - Area Learning Program (ALP)
 - Targeted Services
 - College/University
 - Correctional
 - Secondary Education

Public School Attendance Areas¹

- Elementary School Attendance Area **ELEM**
- Middle School Attendance Area **MIDD**
- High School Attendance Area **HIGH**

Public School Districts¹

- School District
- Adjacent School District
- INSET - SEE MAP 2 OF 2 (if applicable)

Other Features²

- Interstate Highway
- U.S. Highway
- State Highway
- County Highway
- Road/Street
- Railroad
- Stream
- Lake/Pond
- Minor Civil Division
- Public Land Survey Township / Range
- Public Land Survey Section

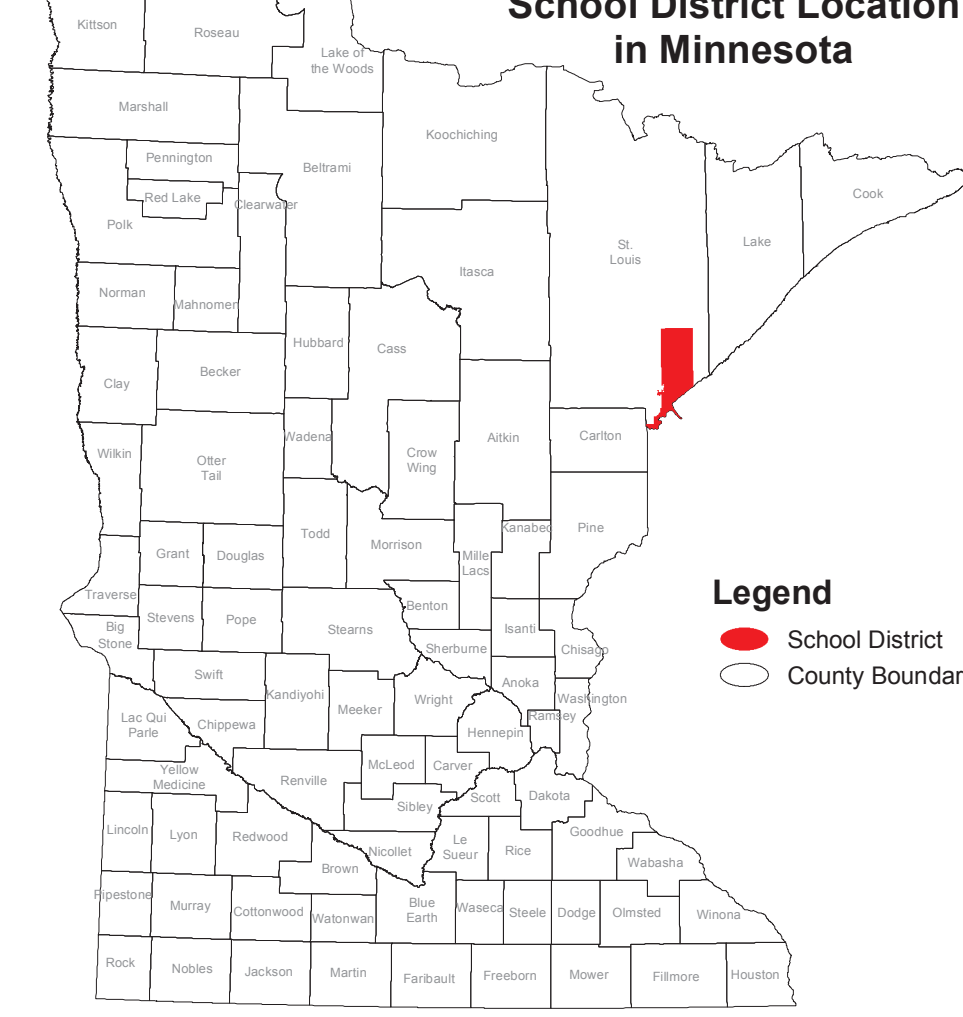
Data Sources:

- Minnesota Department of Education, IT Division (2013)
- Metropolitan Council (2010) Minnesota Department of Transportation (2004)
- Minnesota Geographic Information Office
- U.S. Bureau of the Census, Minnesota Legislative GIS Office (modified to include annexations files with Municipal Board through May 2003)
- Minnesota Department of Natural Resources

Special Note:
The school district boundary appearing on this map do not necessarily represent the legal boundary of the district. It is a generalization of boundaries drawn on maps in the late 1980's by county officials and modified by the U.S. Bureau of the Census, most recently for Census 2000. Since 2005, district boundaries have been modified by the Dept. of Education based on completed County Parcel information. Please contact your county auditor or assessor to obtain an accurate legal description of the boundary.

Liability Statement:
The Minnesota Department of Education does not warrant the results you may obtain by using this map. This map is provided without express or implied warranties, including warranties of merchantability and fitness. In no event will MDE be liable for any consequential, incidental or special damages, including any lost profits or lost savings, even if an MDE representative has been advised of the possibility of such damages or any other claim by any third party.

School District Location in Minnesota



Legend

- School District
- County Boundary

For further assistance with this map, contact:
 Jake Stark jake.stark@state.mn.us
 Scott Freburg scott.freburg@state.mn.us
 MN Department of Education
 1500 Highway 36 West
 Roseville, MN 55113

1 : 68,290

Minnesota Department of
Education

Map Created: September 2011

Duluth

Public Schools

Congdon Park Elem
Denfeld High
DPSA ESY
East High
Harbor City International
Homecroft Elem
Lakewood Elem
Laura MacArthur Elem
Lester Park Elem
Lincoln Park Middle
Lowell Elem
Myers-Wilkins Elem
North Star Academy
Ordean-East Middle
Piedmont Elem
Raleigh Prim/Elem Academy
Stowe Elem

Other School Programs

Arrowhead Juvenile Center
Arrowhead Juvenile Detention Center
Bethany Crises Shelter
Chester Creek Academy
College of St. Scholastica
Diocese of Duluth
Duluth ECSE
Duluth ESY
Duluth Excell TS
Duluth Indian Education
Duluth TS
Enweyang Ojibwe Language Nest
Lake Superior College
Lakeside Academy
Merritt Creek Academy
Northwood Childrens Home
Northwoods West
Park Point Manor
Port Rehabilitation Center For CD
Region 2
Residential Services
Sp. Ed. NP
Superior Academy
Technical Center
THE BRIDGE
Woodland Hills
Woodland Hills Academy
Young Peoples Residential Center

Nonpublic Schools

Diocese of Duluth
Duluth Montessori
Holy Rosary School
Lakeview Christian Academy
Marshall School
St. James School
St. Johns School
St. Michaels Lakeside
Stone Ridge Christian