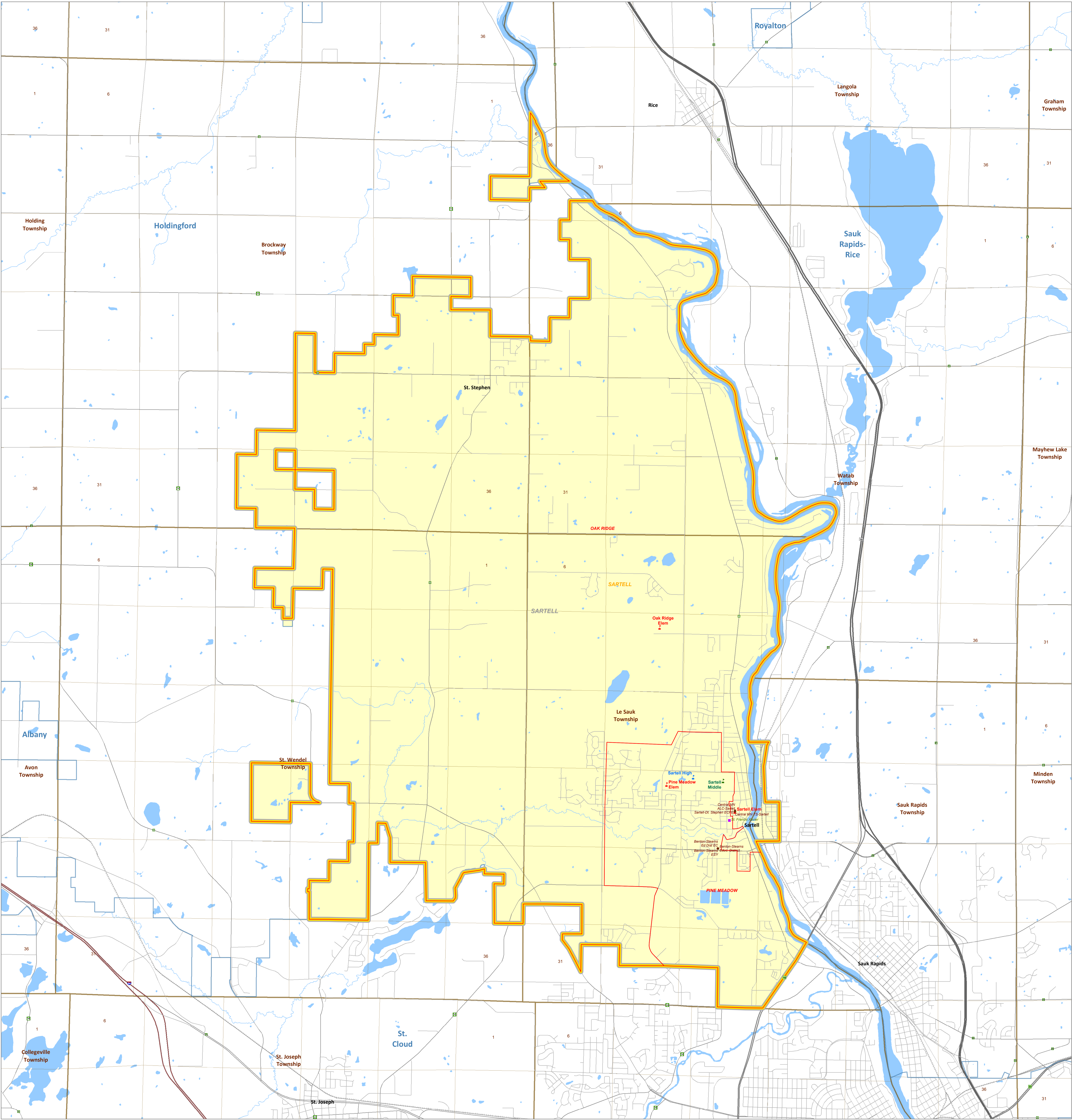


# Public School District Attendance Areas and Educational Facility Locations

SY2015-2016

Sartell-St. Stephen  
748

Map 1 of 1



**Public Educational Facilities or Programs**<sup>1</sup>

- Elementary school
- Middle / Junior high school
- High / Secondary school
- School District Office
- Non-Public school
- Public Charter school
- Other School Program (examples)
  - Area Learning Center (ALC)
  - Area Learning Program (ALP)
  - Targeted Services
  - College/University
  - Correctional
  - Secondary Education

**Public School Attendance Areas**<sup>1</sup>

- Elementary School Attendance Area **ELEM**
- Middle School Attendance Area **MIDD**
- High School Attendance Area **HIGH**

**Public School Districts**<sup>1</sup>

- School District
- Adjacent School District
- INSET - SEE MAP 2 OF 2 (if applicable)

**Other Features**

- Interstate Highway<sup>2</sup>
- U.S. Highway<sup>2</sup>
- State Highway<sup>2</sup>
- County Highway<sup>2</sup>
- Main Street
- Road/Street<sup>2</sup>
- Railroad<sup>2</sup>
- Stream<sup>5</sup>
- Lake/Pond<sup>5</sup>
- Minor Civil Division<sup>4</sup>
- Public Land Survey Township / Range<sup>3</sup>
- Public Land Survey Section<sup>3</sup>

**Data Sources:**

- Minnesota Department of Education, IT Division (2015)
- Metropolitan Council (2010) Minnesota Department of Transportation (2004)
- Minnesota Geospatial Information Office
- U.S. Bureau of the Census, Minnesota Legislative GIS Office (modified to include annexations files with Municipal Board through May 2003)
- Minnesota Department of Natural Resources

**Special Note:**  
The school district boundary appearing on this map do not necessarily represent the legal boundary of the district. It is a generalization of boundaries drawn on maps in the late 1980's by county officials and modified by the U.S. Bureau of the Census, most recently for Census 2010. Since 2005, district boundaries have been modified by the Dept. of Education based on completed County Parcel information. Please contact your county auditor or assessor to obtain an accurate legal description of the boundary.

**Liability Statement:**  
The Minnesota Department of Education does not warrant the results you may obtain by using this map. This map is provided without express or implied warranties, including warranties of merchantability and fitness. In no event will MDE be liable for any consequential, incidental or special damages, including any lost profits or lost savings, even if an MDE representative has been advised of the possibility of such damages or any other claim by any third party.

**School District Location in Minnesota**

Legend

- School District
- County Boundary

1 : 25,230

For further assistance with this map, contact:  
Scott Freburg scott.freburg@state.mn.us  
Jake Stark jake.stark@state.mn.us

MN Department of Education  
MN.IT @ Education  
1500 Highway 36 West  
Roseville, MN 55113

Minnesota Department of Education  
Map Created: November 2015



# Sartell-St. Stephen

## Public Schools

Oak Ridge Elem  
Pine Meadow Elem  
Sartell Elem  
Sartell High  
Sartell Middle

## Other Educational Programs

Benton-Stearns Ed Dist EC  
Central MN ALC-Sartell  
Central MN TS-Sartell  
Sartell-Dt. Stephen ECFE  
School District Office

## Nonpublic Schools

St. Francis Xavier